



N A J D

TWO

by **Reportage.**

عن ريبورتاج About Reportage

تُعد ريبورتاج العقارية واحدة من أكبر شركات التطوير العقاري الخاصة في دولة الإمارات العربية المتحدة، مع مشاريع تمتد عبر الإمارات، مصر، تركيا، المغرب، والسعودية، بالإضافة إلى مشاريع دولية جديدة قادمة. نلتزم بتقديم حلول سكنية مبتكرة وعصرية تجمع بين الفخامة والجودة العالية، بما يضمن للمستثمرين قيمة استثمارية متميزة ويوفر للمشتريين تجربة سكنية راقية وأمنة.

تتمثل رؤيتنا في أن نكون من بين أكثر شركات التطوير العقاري ثقة في العالم، من خلال تقديم منازل تتسم بالأناقة والرقي، وتوفر للسكان شعورًا بالانتماء. نتطلع إلى التوسع عالميًا في السنوات القادمة، لنواصل رحلتنا في تقديم مشاريع استثنائية تتجاوز التوقعات.

Reportage Properties is one of the largest private developers in the United Arab Emirates, with projects in UAE, KSA, Egypt, Turkey, Morocco, and upcoming international projects. We are focused and consistent in our objective to provide innovative, modern, and affordable housing solutions that not only offer our investors an outstanding value but also provide the home buyers a safe place to live in.

Our mission is to be amongst the most trusted real estate companies in the world by developing and providing homes that are equally elegant and affordable and provide you with a sense of belonging. We look forward to the upcoming years, and aspire to expand our real estate business globally.



نبنّي منازل تجمع
بين الفخامة والراحة
بلا حدود

We Build Homes With
Unparalleled Elegance
And Comfort

ملخص المشروع Project Summary

اكتشف "نجد الثاني"، مجموعة استثنائية من التاون هاوس العصرية، الواقعة في قلب الرمال النابض بالحياة، والتي توفر إطلالات رائعة مباشرة على وادي تنال الخلاب. تجسد هذه المجتمع السكني الحضري أسلوب الحياة الحديثة من خلال مزج التصميم الإيطالي المعاصر والراحة الأنيقة، مع تلبية أذواق الأكثر تميزاً.

Discover [Najd Two](#), an exceptional collection of upscale townhouses located in the vibrant heart of Al-Rimal, offering stunning direct views of the picturesque Wadi Tanhal. This exclusive residential community epitomizes modern living with its blend of contemporary Italian design and elegant comfort, catering to the most discerning tastes.

حيث يتناغم الراقي مع العصرية





تفاصيل المشروع Project Details

يضم مشروع "نجد الثاني" ٢٨ تاون هاوس فاخراً، تم ابتكار كل منها بعناية فائقة ليقدم أسلوب حياة مترفاً. يركز التصميم على أعلى مستويات الجودة، ووفرة المساحات، والحلول الهندسية المبتكرة، حيث شيدت هذه المنازل وفقاً لأرقى المعايير العالمية. يمتد المشروع على مساحة إجمالية تبلغ ٢,٨٨٠ متر مربع، موفراً مساحات رحبة لتستمتع بأقصى درجات الراحة والرفاهية.

Najd Two features 28 exquisite townhouses, each thoughtfully designed to provide a luxurious lifestyle experience. With an emphasis on quality, space, and innovative design, these homes are constructed to the highest international standards. The development boasts a total plot area of 2,880 square meters, ensuring ample space for both relaxation and recreation.



مميزات الموقع

Location Features

- 10 min.**
King Abdulaziz Equestrian Field

15 min.
Holiday Inn Riyadh Business District
- 13 min.**
King Fahd Security College

17 min.
Radisson Hotel Riyadh Airport
- 15 min.**
King Khalid International Airport

20 min.
Sultan bin Abdulaziz Humanitarian City
- 15 min.**
King Fahad Stadium

20 min.
The National Festival for Heritage & Culture
- 15 min.**
Naif College for National Security

يضمن الموقع المتميز لمشروع "نجد الثاني" للسكان سهولة الوصول إلى الوجهات الرئيسية
The prime location of Najd Two ensures residents enjoy easy access to key destinations



تصميم داخلي Interior

Unit Mix

Three Bedrooms: 12 townhouses (Ground + 1 + Rooftop)

Four Bedrooms: 16 townhouses (Ground + 2 + Rooftop)

توزيع الوحدات

ثلاث غرف نوم: ١٢ تاون هاوس (طابق أرضي + طابق أول + سطح)

(أربع غرف نوم: ١٦ تاون هاوس (طابق أرضي + طابقين + سطح)





Where Modern Design *Meets*
Timeless Luxury

الخدمات ووسائل الراحة Amenities & Services

Sports Club	نادي رياضي
Recreational Options & Cinemas	خيارات ترفيهية وصالات سينما
Cafes & Restaurants	مقاهي ومطاعم
Mosque	مسجد
Community Retail & Shopping	محلات تجارية للتسوق
Luxury Resorts	منتجعات فاخرة
Green Areas	مساحات خضراء

تم تصميم كل تاون هاوس في "نجد الثاني" لتقديم تجربة فاخرة وراحة متميزة
Each townhouse at Najd Two is designed with premium features to ensure comfort and luxury



مميزات الوحدات Unit Features

Private Balconies/Terraces

شرفات/تراسات خاصة

Modern Kitchen

مطبخ أنيق

Fully tiled bathrooms, in-suites and guest toilets wherever applicable

حمامات مكسوة بالكامل وأجنحة وحمامات للضيوف حيثما كان ذلك متاحاً

Central Air Conditioning

تكييف هواء مركزي

Storage Units & Mirrors

وحدات تخزين ومرآيا

Maid Room

غرفة خادمة

En-Suite Bathrooms

حمامات خاصة مرتبطة بغرف النوم الرئيسية

Large Rooftop Garden

حديقة واسعة على السطح



Experience the pinnacle of luxurious living at **Najd Two**, where every detail is designed to provide an unparalleled lifestyle. Join a community that embraces elegance, comfort, and modern convenience.

استمتع بتجربة العيش الفاخرة في **تجد الثاني**، حيث تم تصميم كل جانب لتوفير أسلوب حياة متميز يليق بك. انضم إلى مجتمع يحتضن الأناقة والراحة والحداثة.

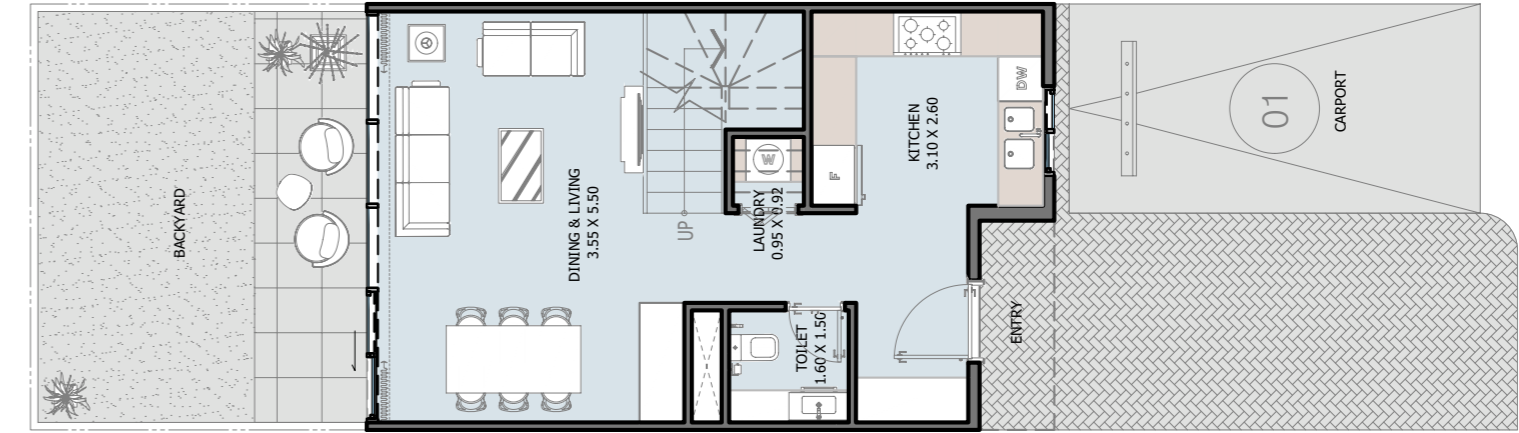


TYPE

Ground Floor Plan



3 Bedrooms



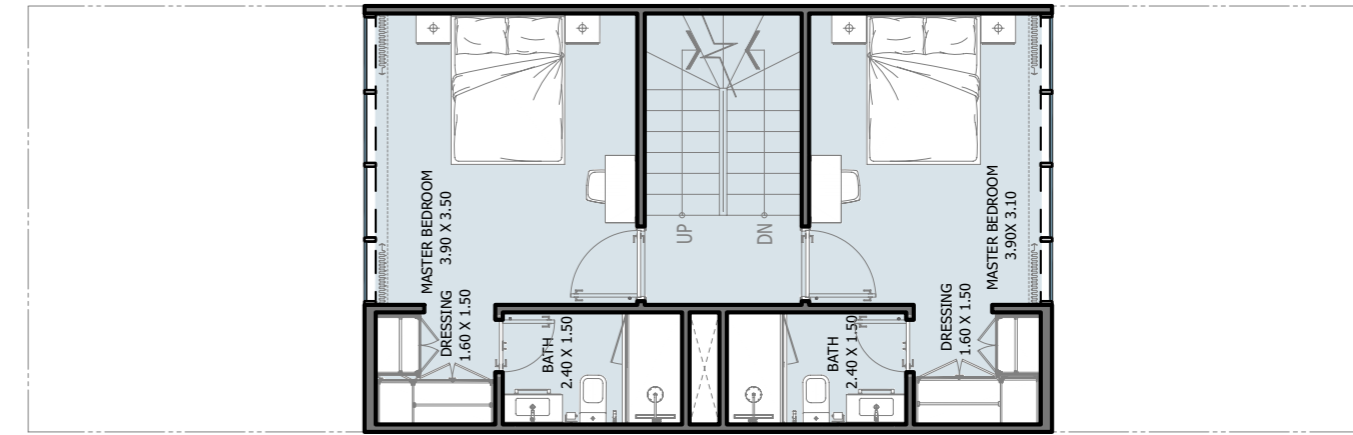
All drawings and dimensions are approximate. Drawings are not to scale and are subject to change without notice. The developer reserves the right to make revisions. The units are measured at typical floors in the building and columns may vary in size depending on the floor level. The furnishing and accessories shown are for representation only. The availability, length and width of the balcony varies depending on which floor and which orientation the unit is located within the building. There will be slight differences in the internal areas between the same unit types depending on the shaft sizes that go through the units.

Ground Floor Plan 3 Bedrooms

TYPE

First Floor Plan

3 Bedrooms



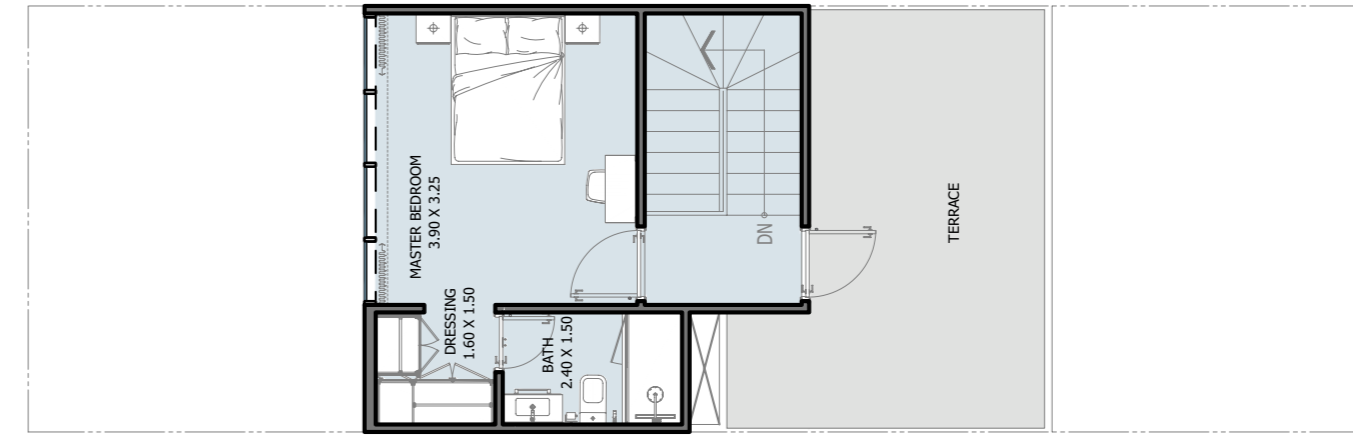
All drawings and dimensions are approximate. Drawings are not to scale and are subject to change without notice. The developer reserves the right to make revisions. The units are measured at typical floors in the building and columns may vary in size depending on the floor level. The furnishing and accessories shown are for representation only. The availability, length and width of the balcony varies depending on which floor and which orientation the unit is located within the building. There will be slight differences in the internal areas between the same unit types depending on the shaft sizes that go through the units.

First Floor Plan 3 Bedrooms

TYPE

Second Floor Plan

3 Bedrooms



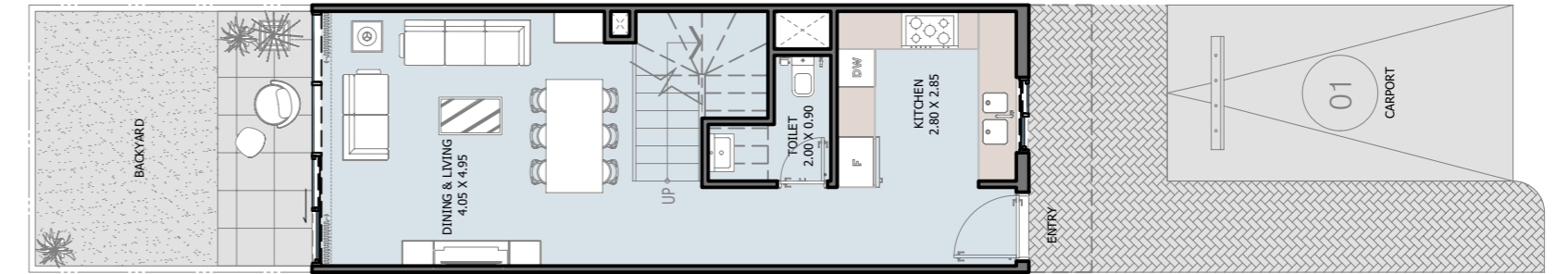
All drawings and dimensions are approximate. Drawings are not to scale and are subject to change without notice. The developer reserves the right to make revisions. The units are measured at typical floors in the building and columns may vary in size depending on the floor level. The furnishing and accessories shown are for representation only. The availability, length and width of the balcony varies depending on which floor and which orientation the unit is located within the building. There will be slight differences in the internal areas between the same unit types depending on the shaft sizes that go through the units.

Second Floor Plan 3 Bedrooms

TYPE

Ground Floor Plan

4 Bedrooms



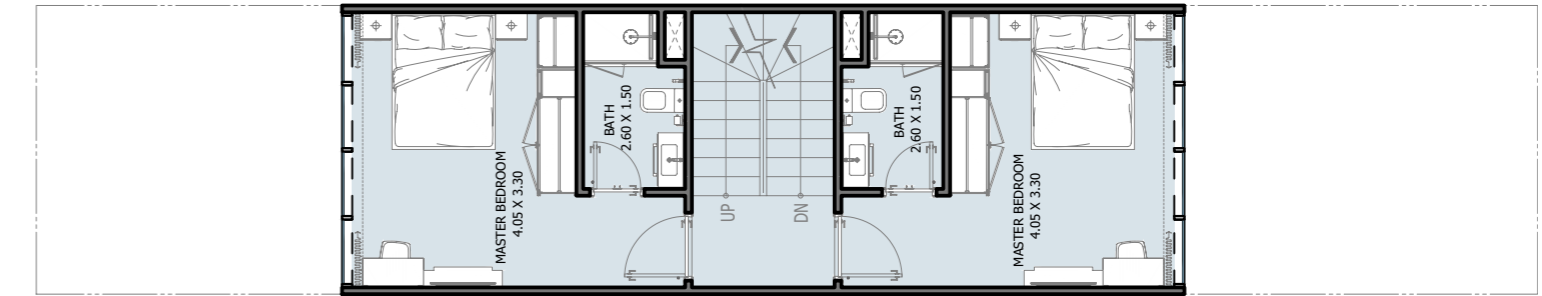
All drawings and dimensions are approximate. Drawings are not to scale and are subject to change without notice. The developer reserves the right to make revisions. The units are measured at typical floors in the building and columns may vary in size depending on the floor level. The furnishing and accessories shown are for representation only. The availability, length and width of the balcony varies depending on which floor and which orientation the unit is located within the building. There will be slight differences in the internal areas between the same unit types depending on the shaft sizes that go through the units.

Ground Floor Plan 4 Bedrooms

TYPE

First Floor Plan

4 Bedrooms



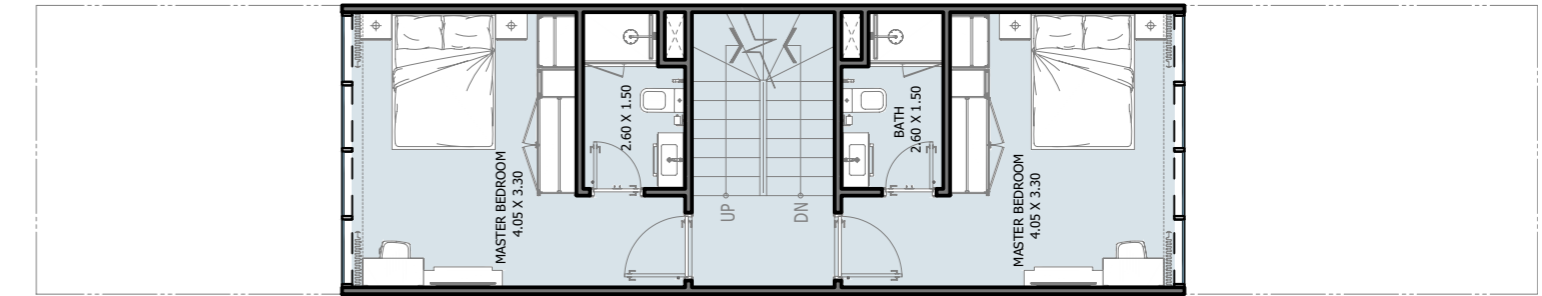
All drawings and dimensions are approximate. Drawings are not to scale and are subject to change without notice. The developer reserves the right to make revisions. The units are measured at typical floors in the building and columns may vary in size depending on the floor level. The furnishing and accessories shown are for representation only. The availability, length and width of the balcony varies depending on which floor and which orientation the unit is located within the building. There will be slight differences in the internal areas between the same unit types depending on the shaft sizes that go through the units.

First Floor Plan 4 Bedrooms

TYPE

Second Floor Plan

4 Bedrooms



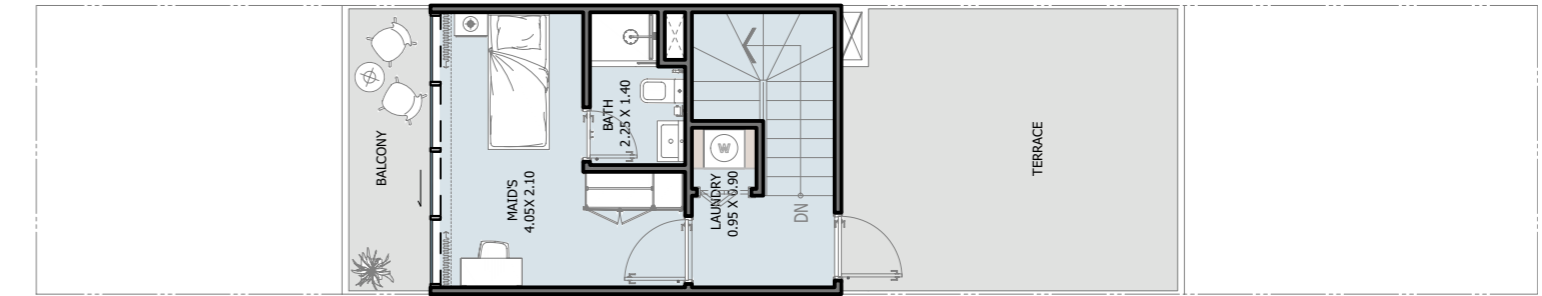
All drawings and dimensions are approximate. Drawings are not to scale and are subject to change without notice. The developer reserves the right to make revisions. The units are measured at typical floors in the building and columns may vary in size depending on the floor level. The furnishing and accessories shown are for representation only. The availability, length and width of the balcony varies depending on which floor and which orientation the unit is located within the building. There will be slight differences in the internal areas between the same unit types depending on the shaft sizes that go through the units.

Second Floor Plan 4 Bedrooms

TYPE

Roof Floor Plan

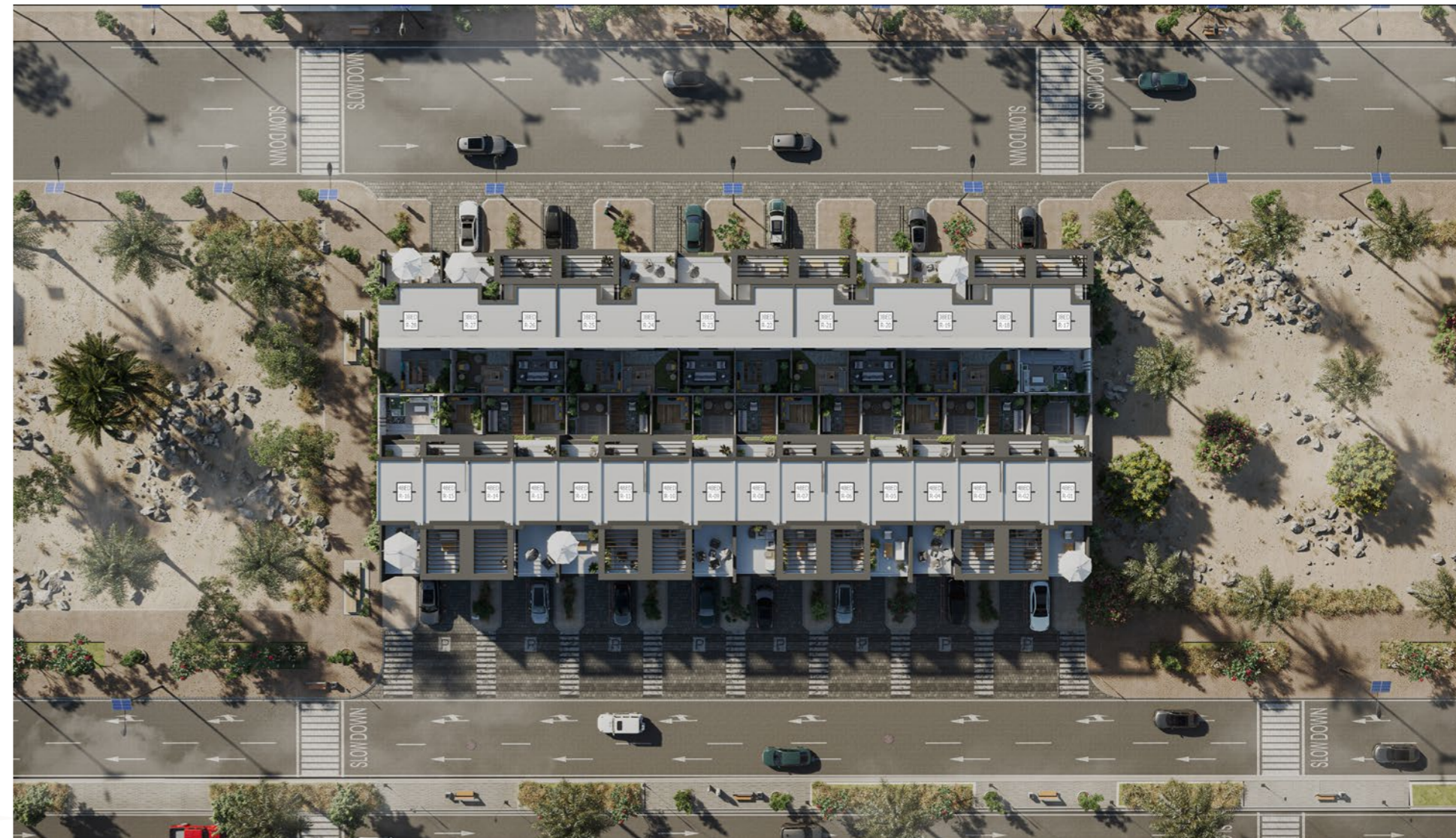
4 Bedrooms



All drawings and dimensions are approximate. Drawings are not to scale and are subject to change without notice. The developer reserves the right to make revisions. The units are measured at typical floors in the building and columns may vary in size depending on the floor level. The furnishing and accessories shown are for representation only. The availability, length and width of the balcony varies depending on which floor and which orientation the unit is located within the building. There will be slight differences in the internal areas between the same unit types depending on the shaft sizes that go through the units.

Roof Floor Plan 4 Bedrooms

الخطة الرئيسية
Master Plan



Riyadh-KSA

Building No. 3230
Al Aflaj St., Al Suwaidi
P.O. Box 12791
T: +966 11 215 1110
info@reportageuae.com

Abu Dhabi-UAE | Head Office

Tamouh Tower
28th Floor, Al Reem Island
P.O. Box: 111949
Tollfree: +971 800 77 55 2
info@reportageuae.com

Dubai-UAE

Anantara Business Tower
3rd Floor, Business Bay
P.O. Box: 27446
Tollfree: +971 800 77 55 2
info@reportageuae.com

Cairo-Egypt

Building 217
North Teseen St.
New Cairo
T: +20 12 0008 1190
info@reportageeg.com

Istanbul-Türkiye

Maslak Mh. Sümer Sk.
No:4, iç Kapı No:3, Bodrum Kat,
Maslak Office Building (MOB) Sarıyer
T: +90 530 774 9595
info@reportage.com.tr

Moscow-Russia

Yefremova Street 10s1, k4/4
bld sadovye kvartaly
P.O. Box 119048
info@reportagerussia.com

Kampala, Uganda

Plot 4, Philip Road
Near German Embassy
Kololo, Kampala, Uganda
+256 756 111 434 | +256 763 331 572
info@reportageug.com

Lahore - Pakistan

Plaza No. 185, Broadway
Commercial phase 8, DHA Lahore
+923309991111
Info@reportageempire.com

Kigali, Rwanda

KG 334 ST 10, Nyarutarama,
Kigali, Rwanda
+250738532168 | +250794100607
info@reportagerw.com



www.reportageksa.com

info@reportageksa.com