

BRABUS

I S L A N D
A B U
D H A B I

CHAPTER TWO - THE VILLAS

BRABUS I S L A N D
A B U
D H A B I

H O M E O F T H E W O W



تستثمر شركة “كوزمو للتطوير العقاري”، التابعة لمجموعة “فلاغ القابضة”، في مشاريع فاخرة وفريدة من نوعها تستقطب تطلّعات النخبة. وتجمع في مشاريعها بين التصميم المبتكر، الفخامة وأسلوب الحياة الراقي في مواقع استثنائية. كل مشروع يعكس التزام الشركة بالجودة العالية، الابتكار، والقيمة طويلة الأمد. وتوفّر مجموعة “ريپورتاج العقارية”، العمليات التشغيلية لشركة “كوزمو”

Cosmo Developments, a part of Flag Holding group, invests in exclusive iconic projects for the discerning few. Blending visionary design, ultra-luxury, and high-end living, Cosmo creates refined spaces for high-net-worth individuals seeking distinction in prime locations.

Every project reflects a commitment to craftsmanship, innovation, and lasting value. Cosmo’s operations are fully powered by Reportage.



تبتكر «برابوس» مفهوماً حديثاً للفخامة وخصوصية التصميم، عبر تطوير منتجات تتّسم بعنصر الإبهار اللافت الذي يمنح عملاءها شعوراً بالتفرد والتميّز. وما بدأ حلمًا شخصيًا، تُرجم إلى علامة تجارية عالمية في مجال السيارات، ومرجعاً لعشاق السيارات في أكثر من 100 دولة.

الشركة الألمانية، الرائدة في مجال ابتكار السيارات الخارقة منذ عام 1977، تفتح فصلاً جديداً في مسيرتها، لتكشف عن أولى مجتمعاتها السكنية الخاصة بعالم العقارات. أهلاً بكم في «فلل برابوس».

BRABUS creates modern, individual luxury by developing products with an instantly recognizable wow factor that puts its customers into the spotlight. What started with a passion for automotive refinement has evolved into a global luxury mobility brand renowned among enthusiasts in over 100 countries for the creation of high-end supercars and as automotive individualization experts since 1977.

With the BRABUS Island Villas, the German luxury mobility brand enters the next ambitious phase of its first-ever BRABUS real estate experience.



BRABUS ISLAND VILLAS HOME OF THE WOW

في قلب المجتمع الحصري لجزيرة برابوس، تتمتع فلل برابوس بموقع خاص وفريد يطلّ على الواجهة البحرية في أبو ظبي. كل فيلا توفر سهولة الوصول إلى أبرز وجهات المدينة، والدمج بين الخصوصية والاتصال المريح مع ما حولها.

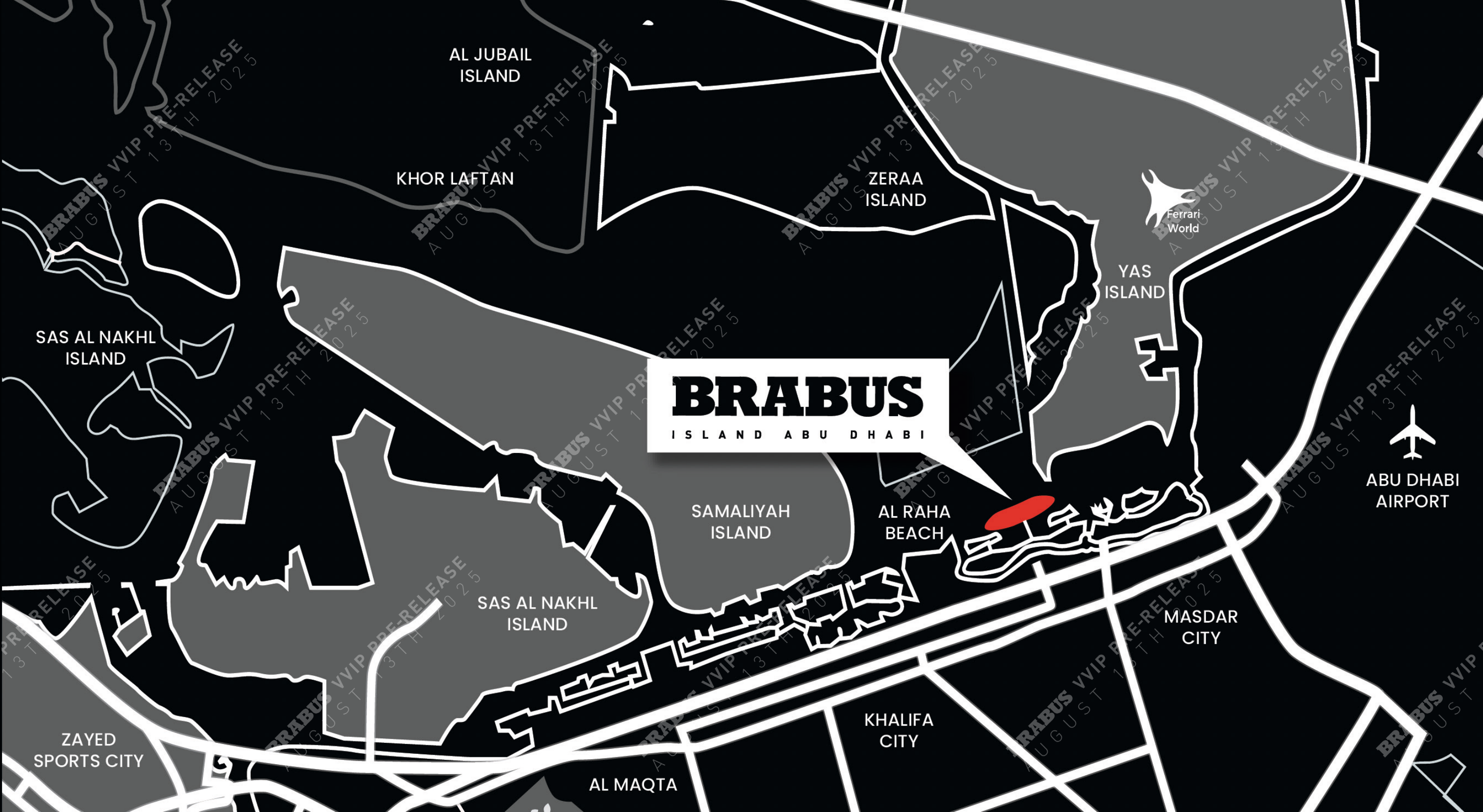
صُمّمت برابوس من أجل أولئك الذين لا يقبلون إلا بالتميّز، لتعيد تعريف معنى الحياة الفاخرة المصممة حسب الطلب.

Located within the exclusive BRABUS Island community, BRABUS Villas enjoy a private and prestigious setting in Abu Dhabi's waterfront landscape. Each residence offers seamless access to the city's most sought-after destinations, blending unmatched privacy with effortless connectivity.

Designed unapologetically for those who won't settle for the ordinary, BRABUS Villas redefine the concept of bespoke living.

LIVE AMONGST
THE ACTION

- 05 Minute Drive to Al Raha Beach
- 10 Minute Drive to Masdar City
- 10 Minute Drive to Abu Dhabi International Airport
- 15 Minute Drive to Khalifa City
- 15 Minute Drive to Sheikh Zayed Grand Mosque
- 18 Minute Drive to Yas Island
- 18 Minute Drive to Etihad Arena
- 20 Minute Drive to Ferrari World Yas Island
- 25 Minute Drive to Saadiyat Island
- 25 Minute Drive to Louvre Abu Dhabi
- 28 Minute Drive to Guggenheim Abu Dhabi





BRABUS

BRABUS ISLAND
ABU
DHABI

فلسفة التصميم

بشكل معماري فريد، تجسّد فلل برايوس فلسفة التصميم الخاصة بالعلامة، وتجمع بين القوة، الأناقة، والتفرد.

كل فيلا تعكس تجربة نمط حياة مصمّم بعناية، ودعوة للعيش بأسلوب «برايوس».

DESIGN PHILOSOPHY

BRABUS Villas bring the BRABUS design philosophy to life in the form of tailor-made architecture, a bold statement of power, elegance and individuality.

Each individual villa is a tailor-made lifestyle experience and an invitation to live BRABUSIZED.





BRABUS ISLAND
ABU
DHABI

هذه هي جزيرة برابوس

أنت في عالم ترسمه بلمستك،
حيث يحاكي التصميم ذوقك،
ليكتب بصمتك الخاصة.
هنا، كل تفصيل يروي قصة،
والاستثناء أسلوب حياة،
تبتكره ليعكس رؤيتك.
هذه هي تحفتك التي لا شبيه لها.
أهلاً بك في «جزيرة برابوس».

THIS IS BRABUS ISLAND

Welcome to a world shaped by your design.
Where the style that defines you.
Becomes your signature.

A place where everything tells a story.
Where the extraordinary is a lifestyle.
And you create what reflects you.

This is your Masterpiece.
Welcome to BRABUS Island.





تفاصيل المشروع

النوع: وحدات سكنية فاخرة
مساحة الأرض: 95,221 متر مربع
عدد الوحدات: 92 فيلا

مزيج الوحدات

فلل مطلة على الشاطئ: 20
فلل مطلة على البحيرة: 18
فلل متلاصقة: 36
تاون هاوس: 10
بنتهاوس: 4
فلل فاخرة لكبار الشخصيات: 4

PROJECT DETAILS

Type: Ultra Luxury Residential
Plot Area: 95,221 sq.m
Total Villas: 92

UNIT MIX

Beach Villas: 20
Lake Villas: 18
Twin Villas: 36
Townhouses: 10
Penthouses: 4
VIP Villas: 4





BRABUS ISLAND
ABU DHABI

AMENITIES & SERVICES

- Grand Pavilion with Curated Retail
- Large Swimming Pool & Kids' Pool
- Gymnasium
- Private Beach for BRABUS Island Residents
- Private Marina for Yachts & Boats
- Landscape Shaded Seating Areas
- Private Parking for Residents

وسائل الراحة والخدمات

- جناح فاخر يضم محلات تجارية مختارة بدقّة
- حوض سباحة كبير وحمام سباحة للأطفال
- صالة ألعاب رياضية
- شاطئ خاص بسكان جزيرة برابوس
- مرسى خاص لليخوت والقوارب
- مناطق جلوس مظلة ومنسقة في المساحات الخضراء
- مواقف سيارات خاصة للسكان



PERSONALIZED FOR YOU

- Private Pool
- Private Balconies / Terraces
- Designer Kitchen Cabinets & Countertops
- Fully-Tiled Bathrooms & Guest Toilets
- En-Suite Bedrooms
- Double-Glazed Windows
- Built-In Wardrobes
- Central Air Conditioning
- Vanity Units & Mirrors
- Private Green Backyard
- Covered Private Pparking

مميزات الفيلا

- حمام سباحة خاص بكل فيلا
- شرفات / تراسات خاصة
- خزائن مطبخ وأسطح عمل مصممة حسب الطلب
- حمامات ودورات مياه مكسوة بالكامل وحمامات للضيوف
- غرف نوم ماستر
- نوافذ زجاجية مزدوجة
- خزائن ملابس مدمجة
- نظام تكييف مركزي
- وحدات تخزين ومرايا
- حديقة خلفية خضراء خاصة
- موقف سيارات خاص مغطى





أنواع الفيلا

كل فيلا قابلة للتصميم بالكامل بثلاثة أنماط تحمل بصمة علامة «برابوس»، وبنهج تصميم داخلي معياري. تبدأ الخيارات بثلاثة ألوان أساسية: الأسود، الأبيض النقي والرمادي الهادئ، ليقدّم كل منها تفسيراً مختلفاً لروح العلامة وأسلوبها المميّز. ويتيح للسكان تصميم تحفّتهم المعمارية للعيش فيها.

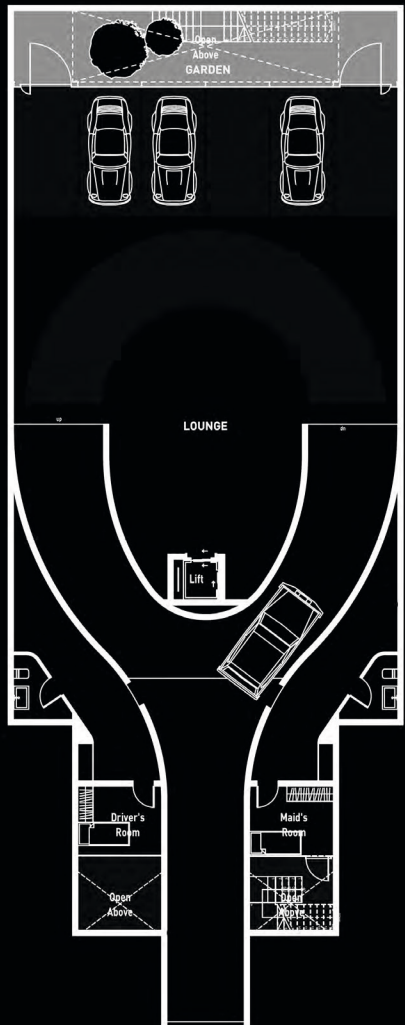
التصميم، المستوحى من عالم سيارات برابوس الخارقة المصمّمة حسب الطلب، يمكن تعديله ليعكس شخصية المالك وتفرّده. إنها رؤية لا تقبل المساومة في عالم الفخامة، صُمّمت لتقديم تجربة واحدة قبل كل شيء:

لحظة الانبهار في ثانية واحدة من برابوس.

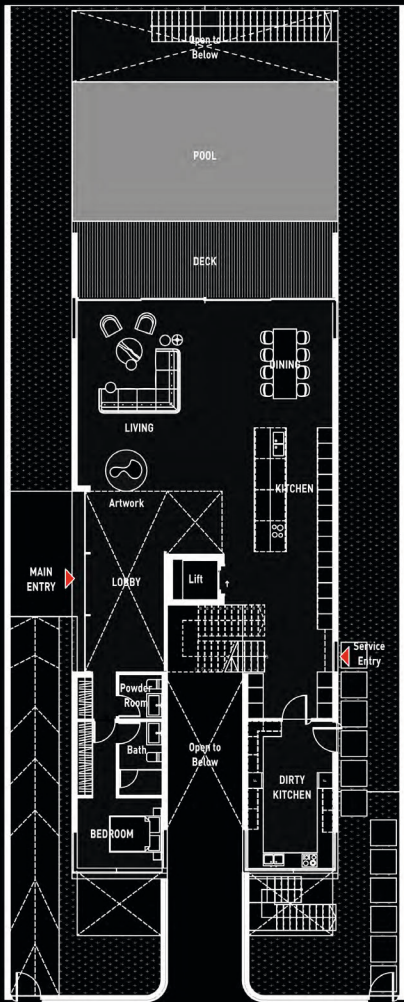
VILLA TYPES

Each villa can be fully personalized with three BRABUS signature themes and a modular interior design approach. Starting from three distinct colorways - Black and Bold, White Bliss, and Gray Haven - each offering a different interpretation of the brand's signature look and feel, residents are able to configure their own BRABUS Masterpiece to live in.

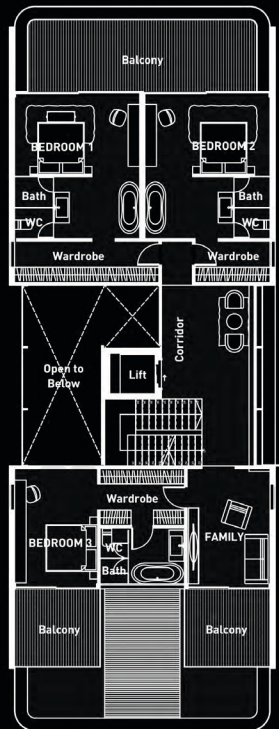
Inspired by the world of tailor-made BRABUS supercars, the design can be tailored to reflect the unique personality of the owner. It's an uncompromising approach to luxury, designed to deliver one thing above all: the 1-Second-Wow.



Basement Floor

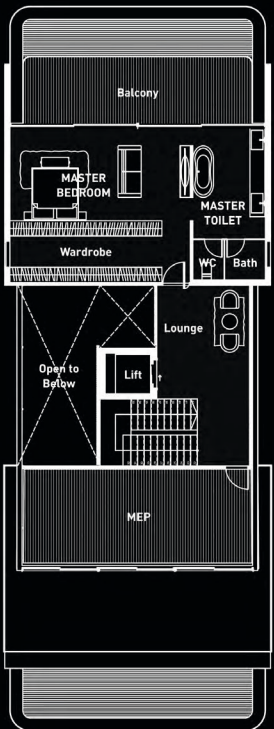


Ground Floor

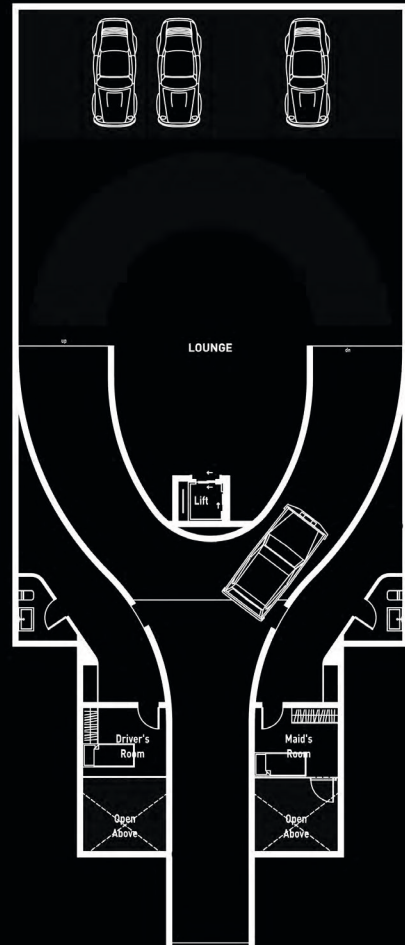


First Floor

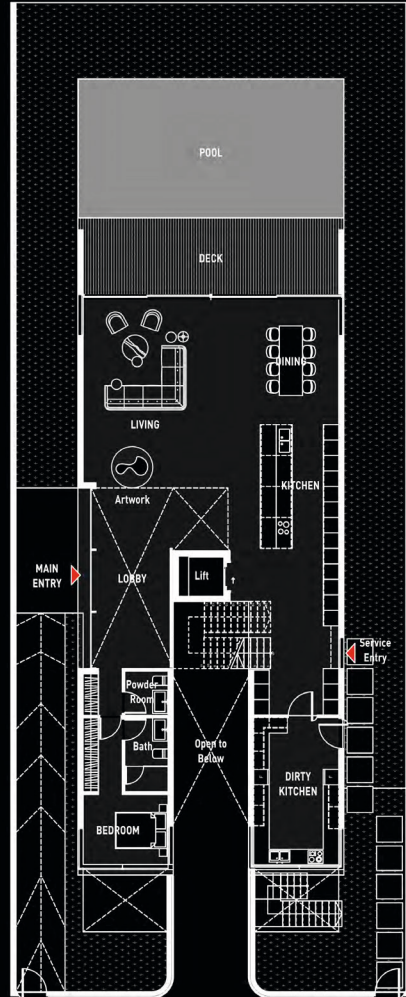
Internal Area 348.90 sqm.
External Area 119.35 sqm.



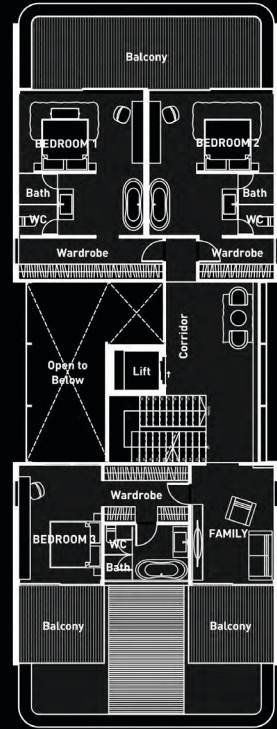
Second Floor



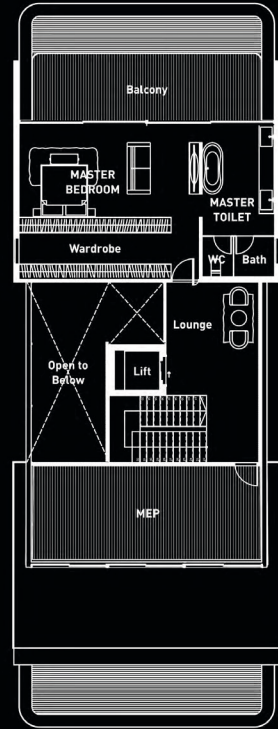
Basement Floor



Ground Floor



First Floor



Second Floor

Internal Area 393.01 sqm.
External Area 75.24 sqm.

Beach Villa

BRABUS Island Villas

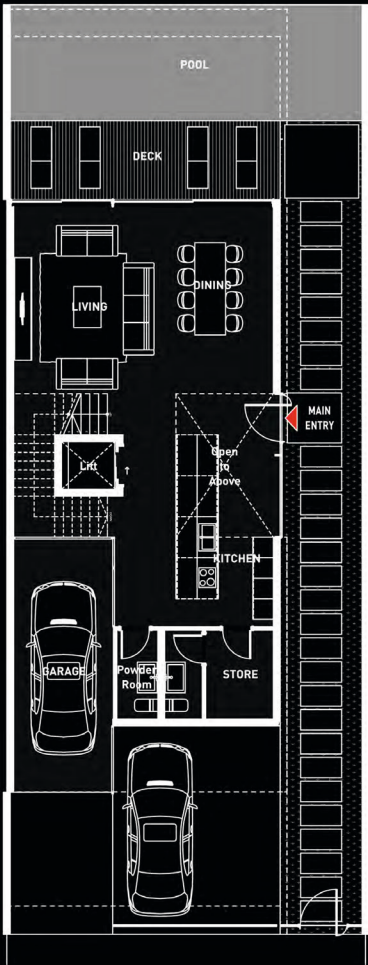
All drawings and dimensions are approximate. Drawings are not to scale and are subject to change without notice. The developer reserves the right to make revisions. The units are measured at typical floors in the building and columns may vary in size depending on the floor level. The furnishing and accessories shown are for representation only. The availability, length and width of the balcony varies depending on which floor and which orientation the unit is located within the building. There will be slight differences in the internal areas between the same unit types depending on the shaft sizes that go through the units.

Beach Villa - Short Basement

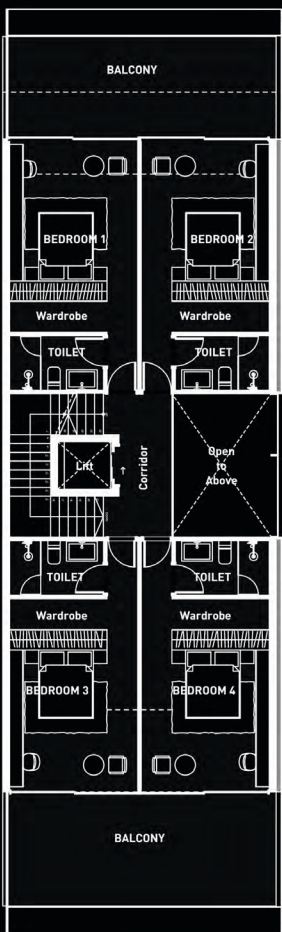
BRABUS Island Villas

All drawings and dimensions are approximate. Drawings are not to scale and are subject to change without notice. The developer reserves the right to make revisions. The units are measured at typical floors in the building and columns may vary in size depending on the floor level. The furnishing and accessories shown are for representation only. The availability, length and width of the balcony varies depending on which floor and which orientation the unit is located within the building. There will be slight differences in the internal areas between the same unit types depending on the shaft sizes that go through the units.

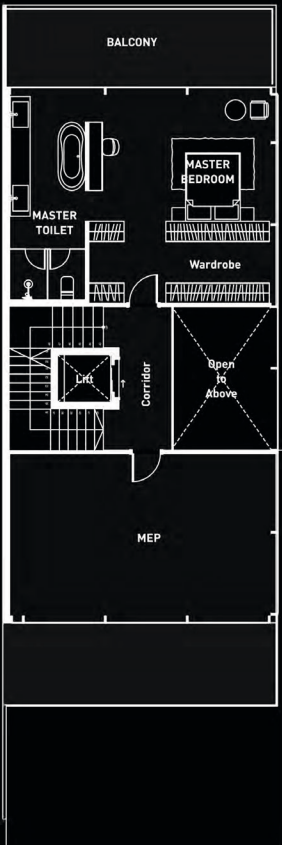
Internal Area 187.60 sqm.
External Area 156.53 sqm.



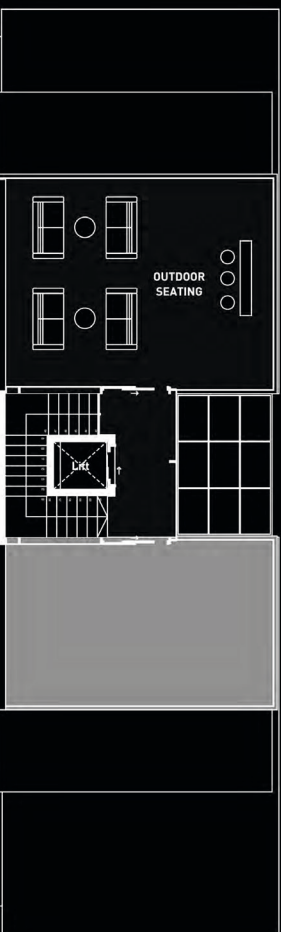
Ground Floor



First Floor



Second Floor

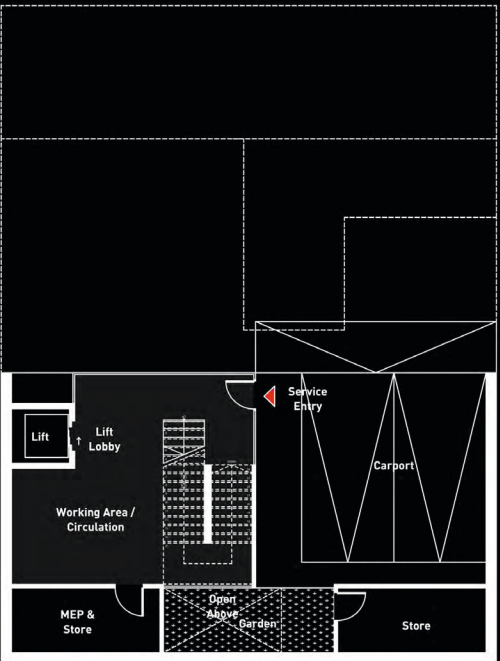


Roof Floor

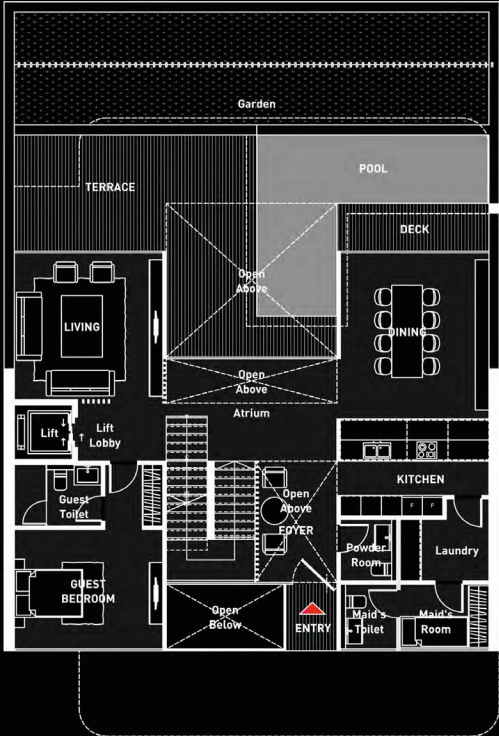
Twin Villa
BRABUS Island Villas

All drawings and dimensions are approximate. Drawings are not to scale and are subject to change without notice. The developer reserves the right to make revisions. The units are measured at typical floors in the building and columns may vary in size depending on the floor level. The furnishing and accessories shown are for representation only. The availability, length and width of the balcony varies depending on which floor and which orientation the unit is located within the building. There will be slight differences in the internal areas between the same unit types depending on the shaft sizes that go through the units.

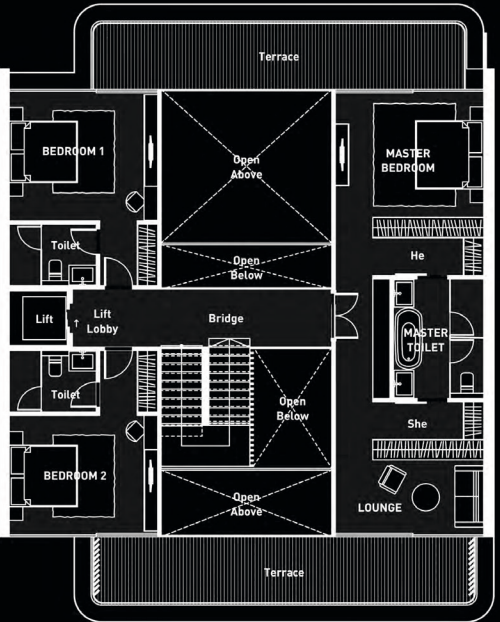
Internal Area 319.60 sqm.
External Area 215.80 sqm.



Basement Floor



Ground Floor

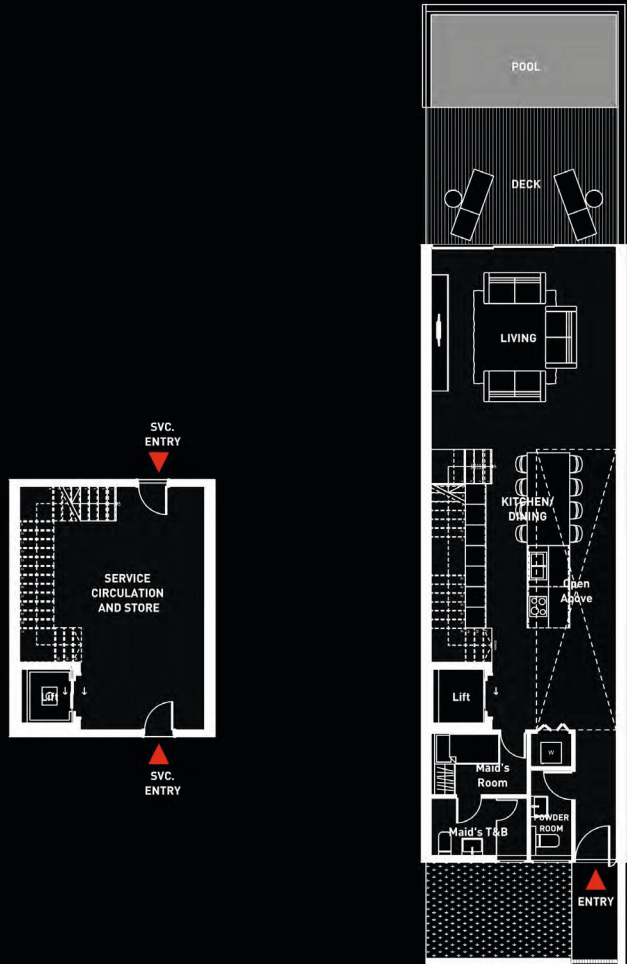


First Floor

Lake Villa
BRABUS Island Villas

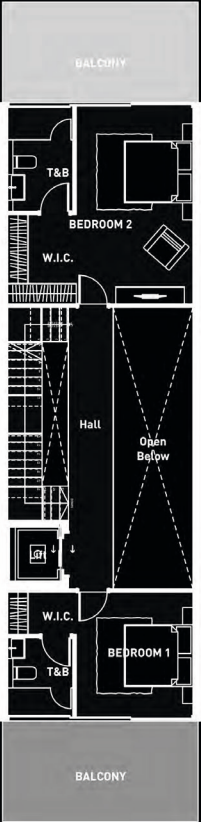
All drawings and dimensions are approximate. Drawings are not to scale and are subject to change without notice. The developer reserves the right to make revisions. The units are measured at typical floors in the building and columns may vary in size depending on the floor level. The furnishing and accessories shown are for representation only. The availability, length and width of the balcony varies depending on which floor and which orientation the unit is located within the building. There will be slight differences in the internal areas between the same unit types depending on the shaft sizes that go through the units.

Internal Area 267.90 sqm.
External Area 107.30 sqm.

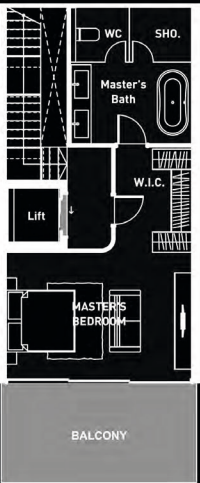


Basement Floor

Ground Floor



First Floor



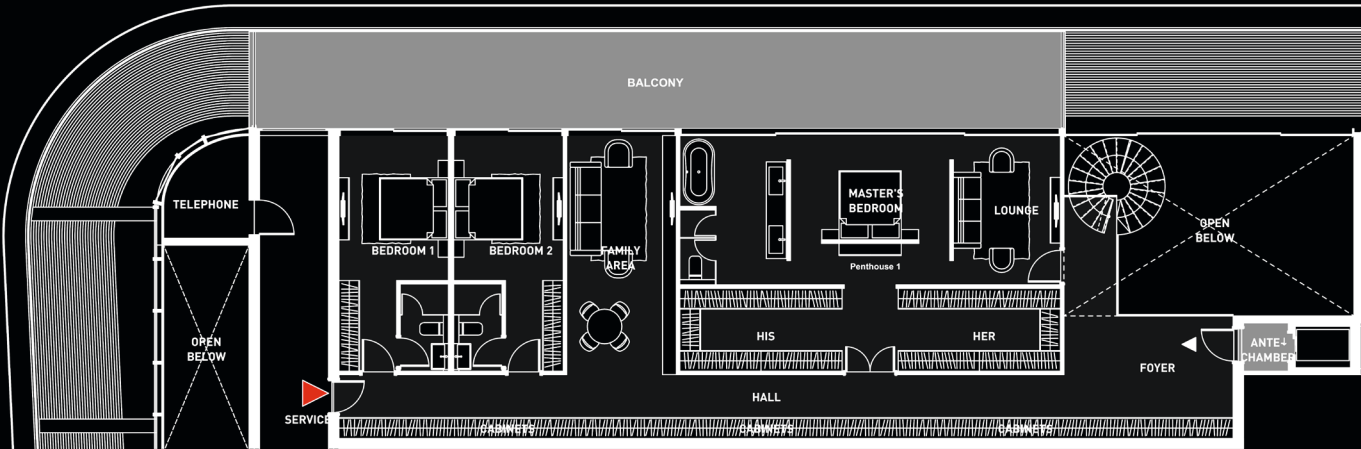
Second Floor

3-Bedroom Townhouse

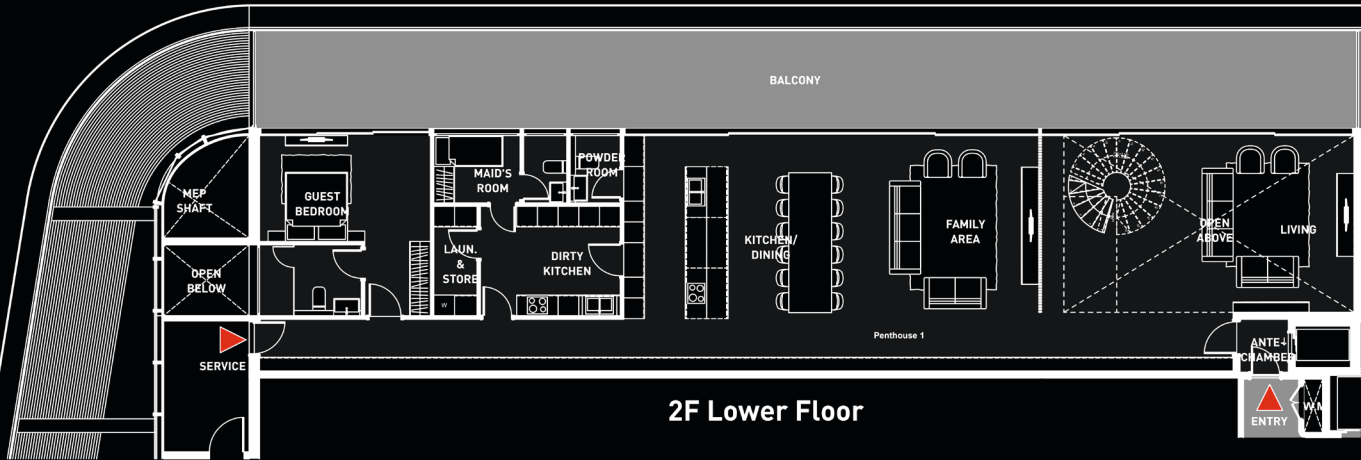
BRABUS Island Villas

All drawings and dimensions are approximate. Drawings are not to scale and are subject to change without notice. The developer reserves the right to make revisions. The units are measured at typical floors in the building and columns may vary in size depending on the floor level. The furnishing and accessories shown are for representation only. The availability, length and width of the balcony varies depending on which floor and which orientation the unit is located within the building. There will be slight differences in the internal areas between the same unit types depending on the shaft sizes that go through the units.

Internal Area 436.30 sqm.
External Area 149.30 sqm.



3F Upper Floor



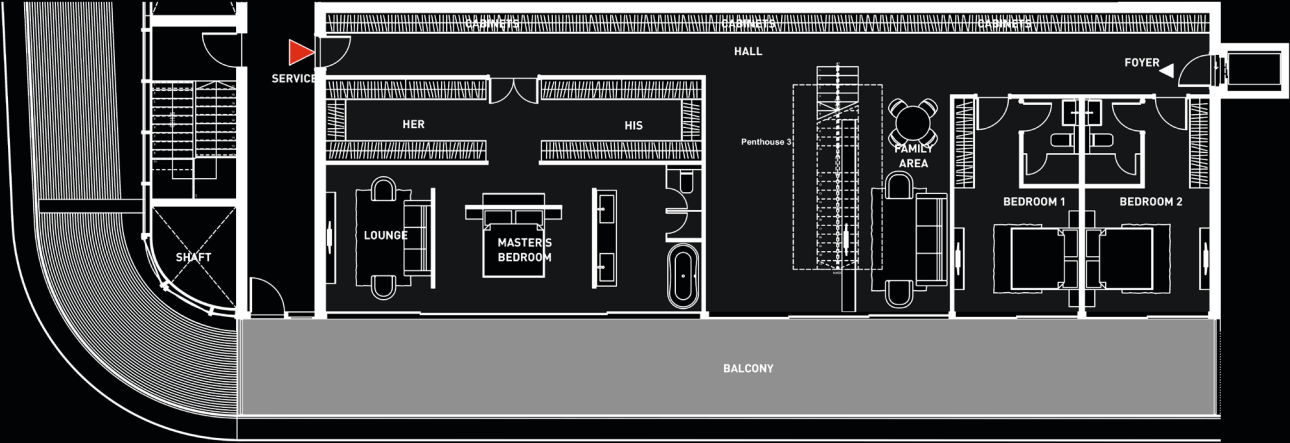
2F Lower Floor

Penthouse A - Townhouse Complex

BRABUS Island Villas

All drawings and dimensions are approximate. Drawings are not to scale and are subject to change without notice. The developer reserves the right to make revisions. The units are measured at typical floors in the building and columns may vary in size depending on the floor level. The furnishing and accessories shown are for representation only. The availability, length and width of the balcony varies depending on which floor and which orientation the unit is located within the building. There will be slight differences in the internal areas between the same unit types depending on the shaft sizes that go through the units.

Internal Area	211.60 sqm.
External Area	354.50 sqm.



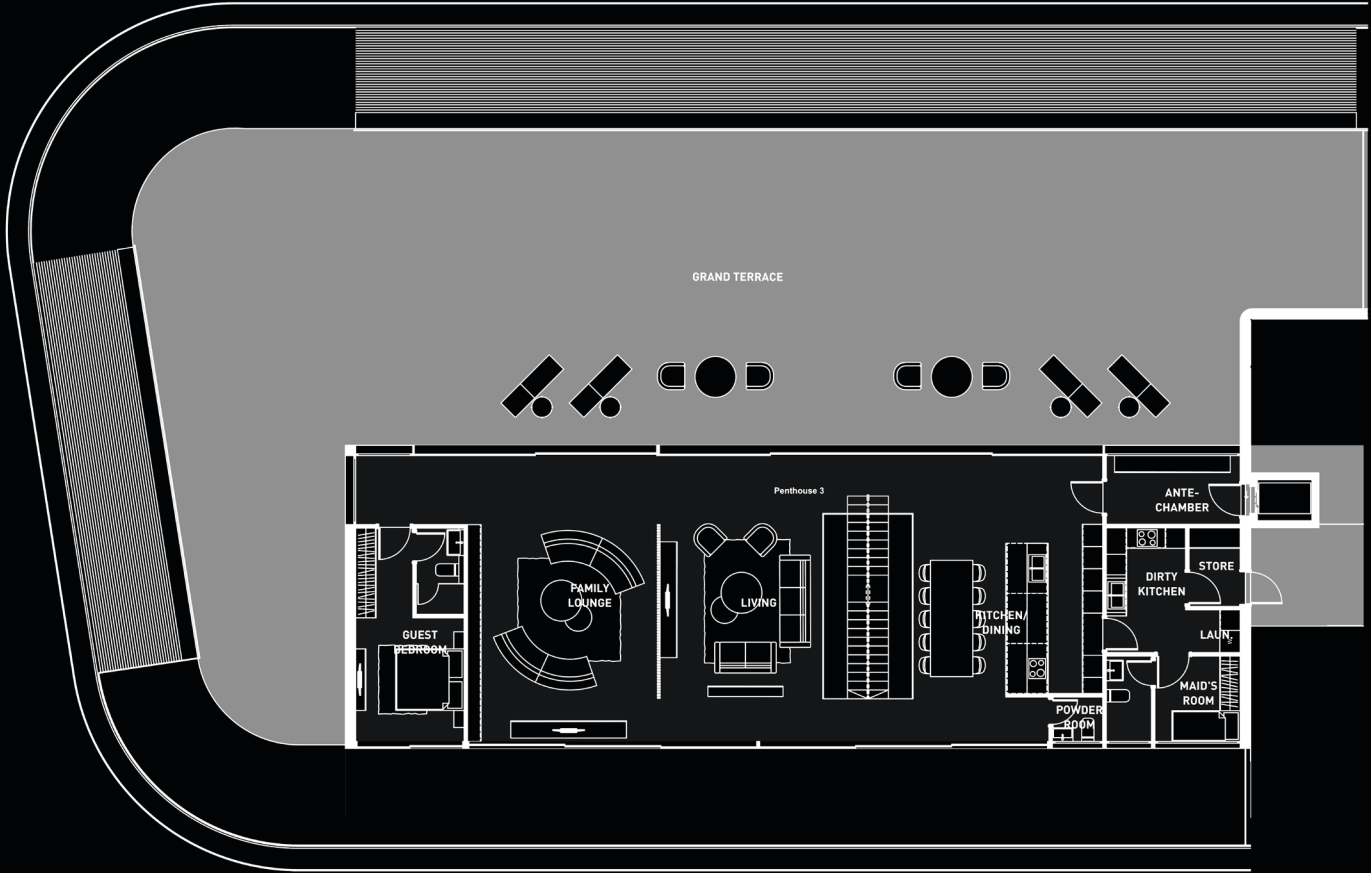
3F Lower Floor

Penthouse B - Townhouse Complex

BRABUS Island Villas

All drawings and dimensions are approximate. Drawings are not to scale and are subject to change without notice. The developer reserves the right to make revisions. The units are measured at typical floors in the building and columns may vary in size depending on the floor level. The furnishing and accessories shown are for representation only. The availability, length and width of the balcony varies depending on which floor and which orientation the unit is located within the building. There will be slight differences in the internal areas between the same unit types depending on the shaft sizes that go through the units.

Internal Area	211.60 sqm.
External Area	354.50 sqm.



4F Upper Floor

Penthouse B - Townhouse Complex

BRABUS Island Villas

All drawings and dimensions are approximate. Drawings are not to scale and are subject to change without notice. The developer reserves the right to make revisions. The units are measured at typical floors in the building and columns may vary in size depending on the floor level. The furnishing and accessories shown are for representation only. The availability, length and width of the balcony varies depending on which floor and which orientation the unit is located within the building. There will be slight differences in the internal areas between the same unit types depending on the shaft sizes that go through the units.





BRABUS GmbH
Brabus-Allee
46240 Bottrop
Germany
Phone: +49 (0)151 70294192
brabusisland@brabus.com
brabus-island.com



Abu Dhabi-UAE | Head Office
Tamouh Tower
28th Floor, Al Reem Island
P.O. Box: 111949
Tollfree: +971 800 77 55 2
info@reportageuae.com



Legal Disclaimer:

The information contained in this brochure is confidential and is for the exclusive use of the recipient. This brochure may not be reproduced, distributed, delivered, or furnished to any person without the prior written approval of Reportage Properties. No representation or warranty (expressed or implied) is made or can be given with respect to the accuracy or completeness of the information herein, or that any future offer of units or apartments in the project will conform to the terms described herein. Nothing in this leaflet should be constructed as financial, legal, tax or regulatory advice. All accessories such as electronics, furniture, white goods, decorative elements and so forth included in this brochure are not part of the standard unit and used for illustration purposes only. All plans, layouts, pictures, renderings, information and details included in this brochure are indicative only and may change at any time up to the final 'as built' status in accordance with final designs of the project and regulatory approvals and planning permissions.

BRABUS I S L A N D
A B U
D H A B I

CO8MO X **BRABUS**