



REPORTAGE

TOWER

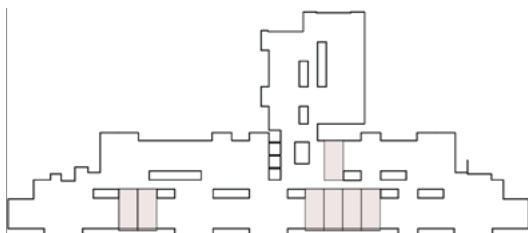
N I G E R I A



UNIT TYPES

All drawings and dimensions are approximate. Drawings are not to scale and are subject to change without notice. The developer reserves the right to make revisions. The units are measured at typical floors in the building and columns may vary in size depending on the floor level. The furnishing and accessories shown are for representation only.

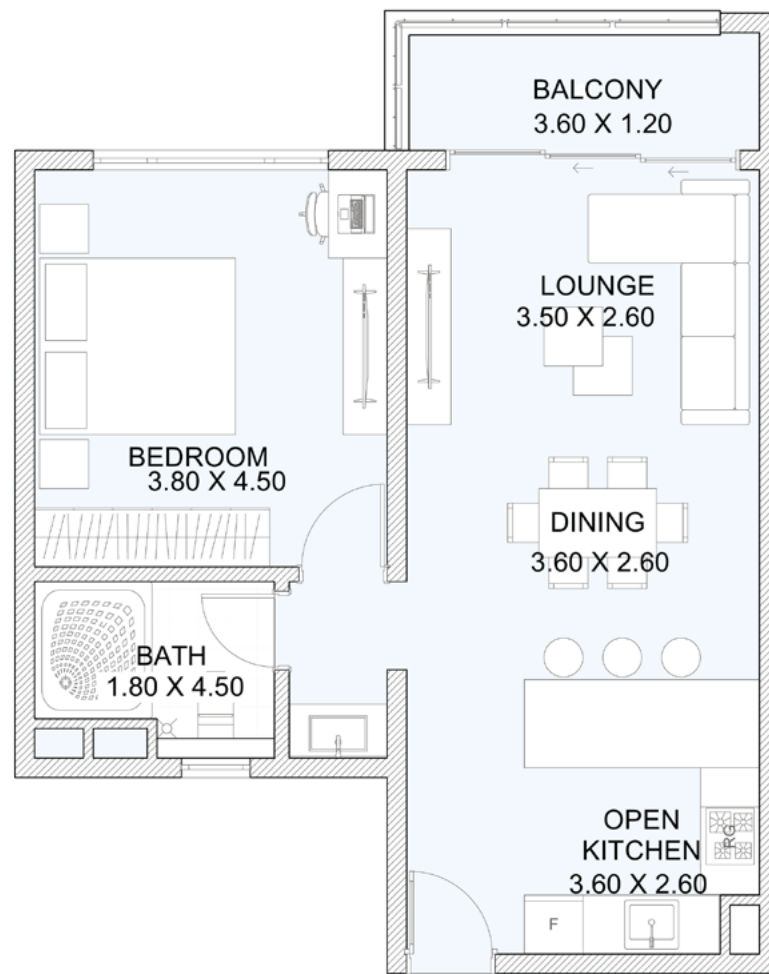
The availability, length and width of the balcony varies depending on which floor and which orientation the unit is located within the building. There will be slight differences in the internal areas between the same unit types depending on the shaft sizes that go through the units.



STUDIO

5th Floor

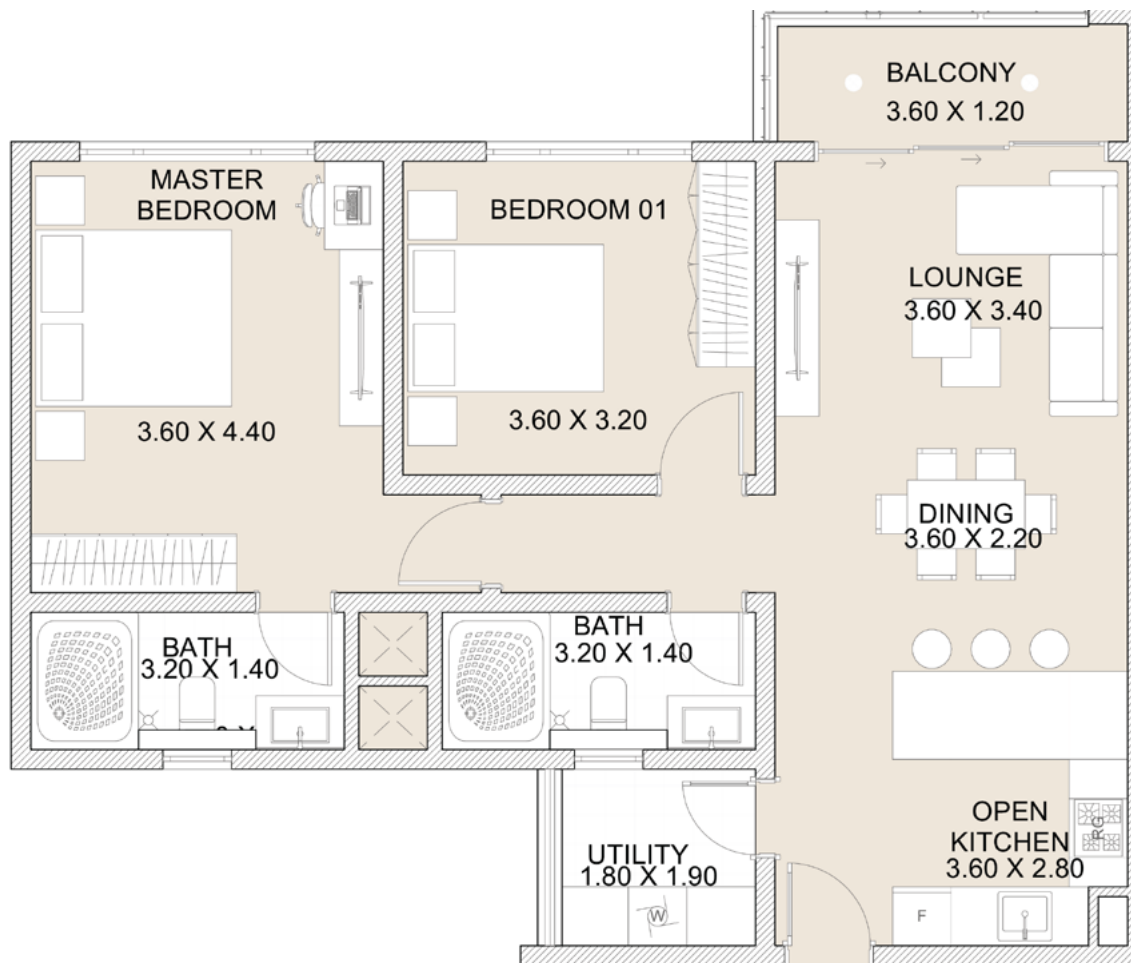
Internal Area	32 sq.m
External Area	-
Total Area	32 sq.m



1B

5th Floor

Internal Area	57 sq.m
External Area	5 sq.m
Total Area	62 sq.m

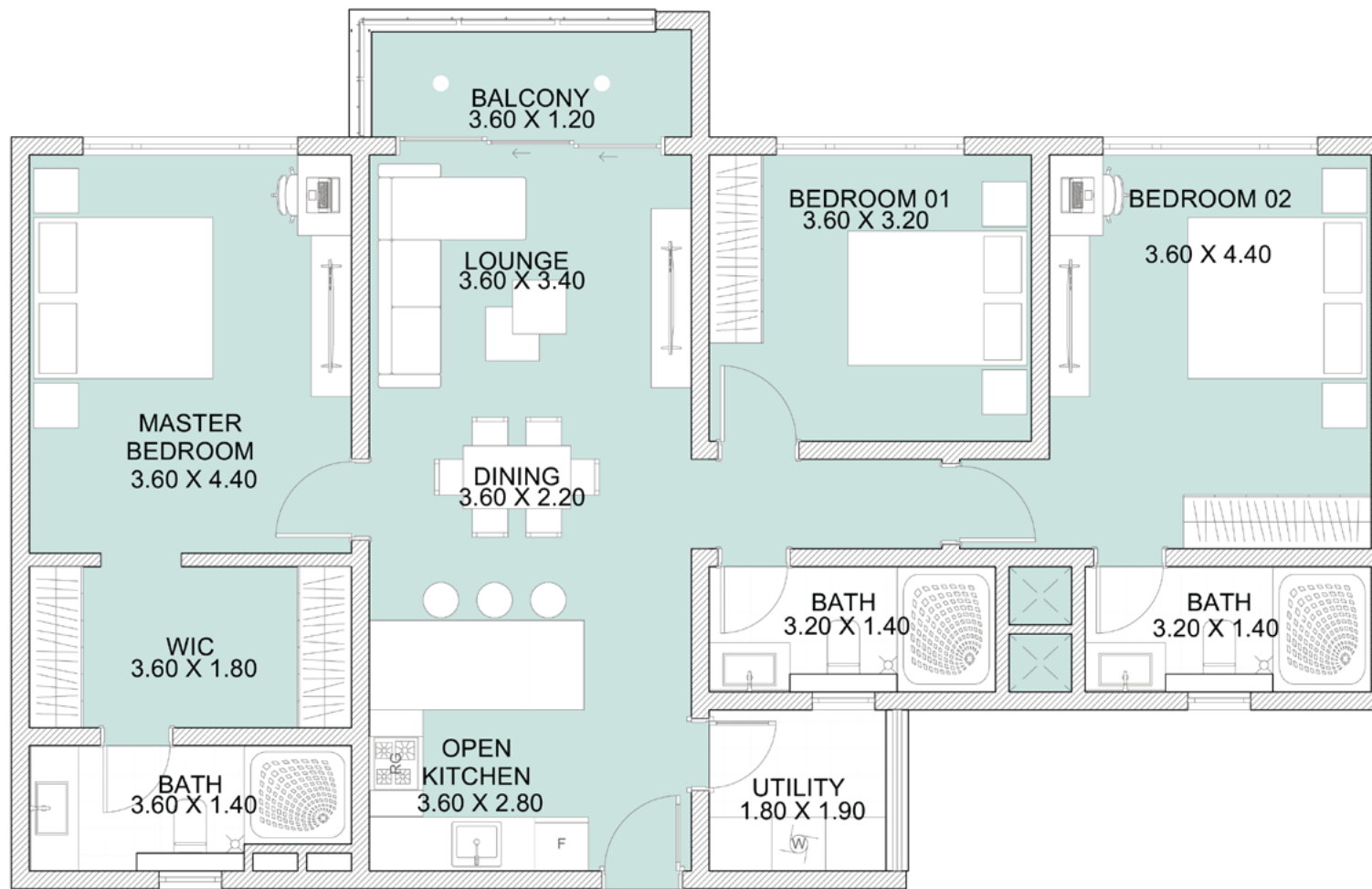


2B

5th Floor

Internal Area	87 sq.m
External Area	5 sq.m
Total Area	92 sq.m





3B

6th Floor

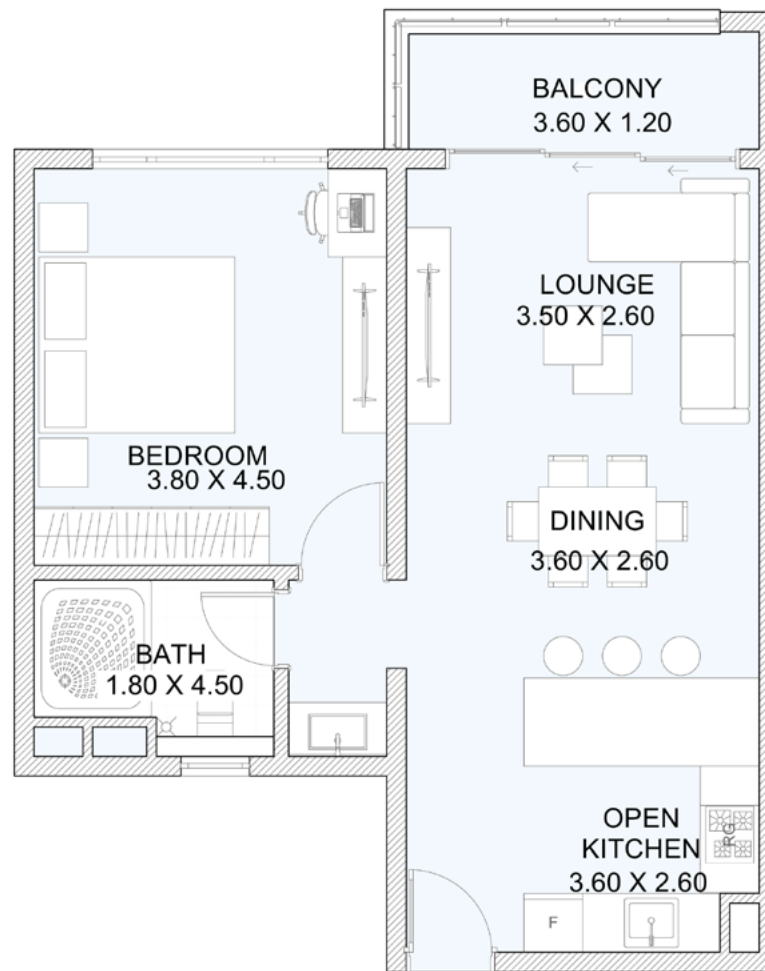
Internal Area	117 sq.m
External Area	5 sq.m
Total Area	122 sq.m



STUDIO

6th Floor

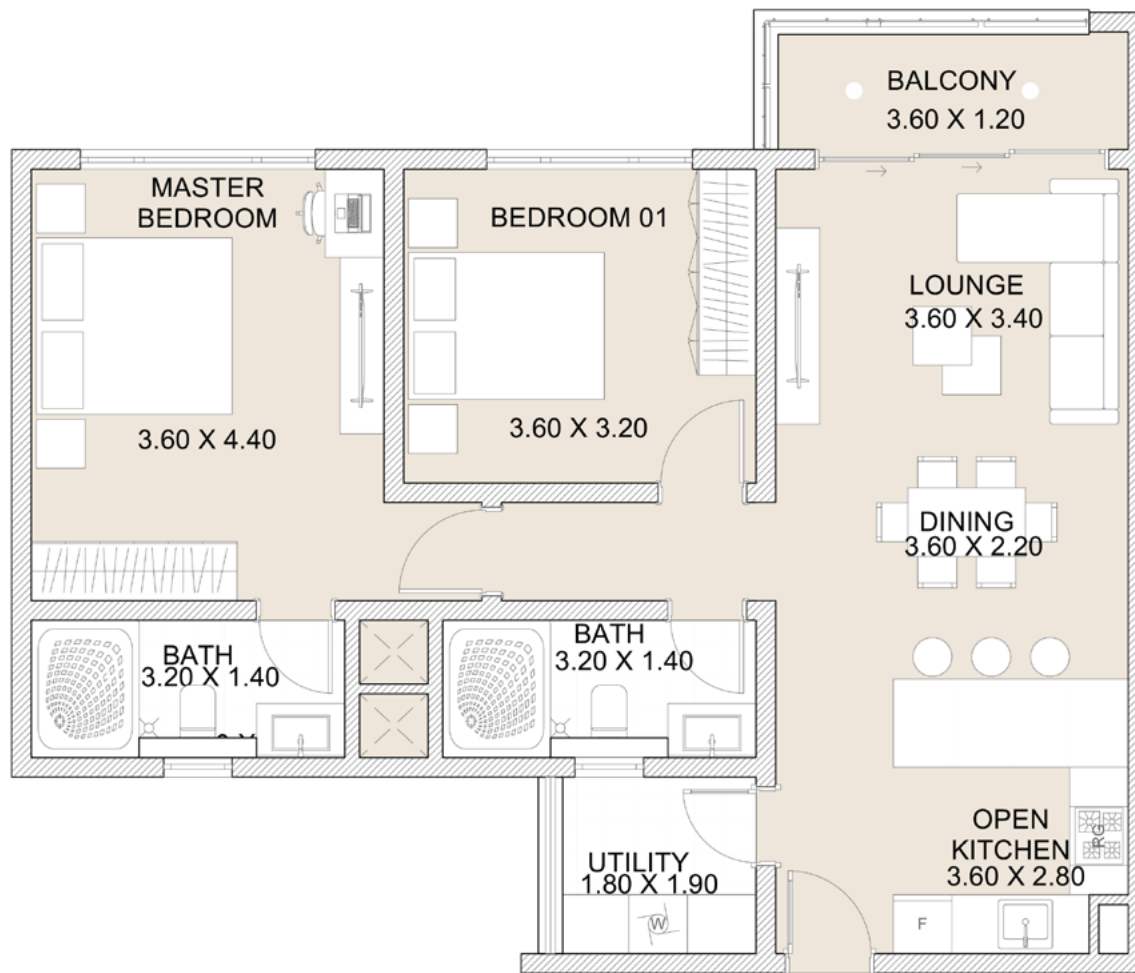
Internal Area	32 sq.m
External Area	-
Total Area	32 sq.m



1B

6th Floor

Internal Area	57 sq.m
External Area	5 sq.m
Total Area	62 sq.m

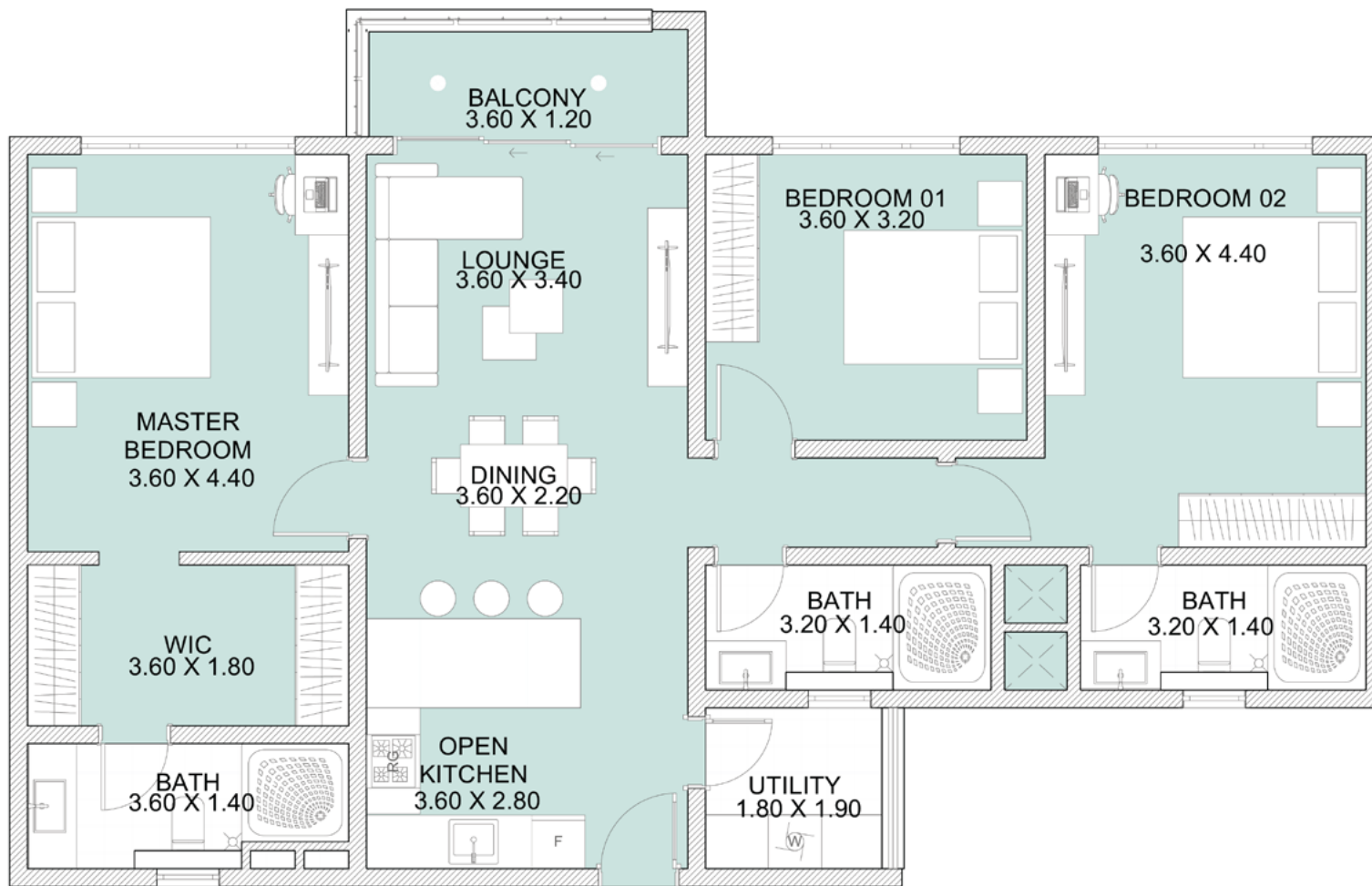


2B

6th Floor

Internal Area	87 sq.m
External Area	5 sq.m
Total Area	92 sq.m

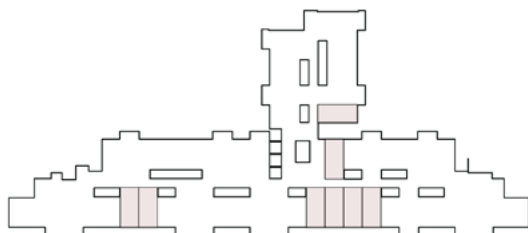




3B

6th Floor

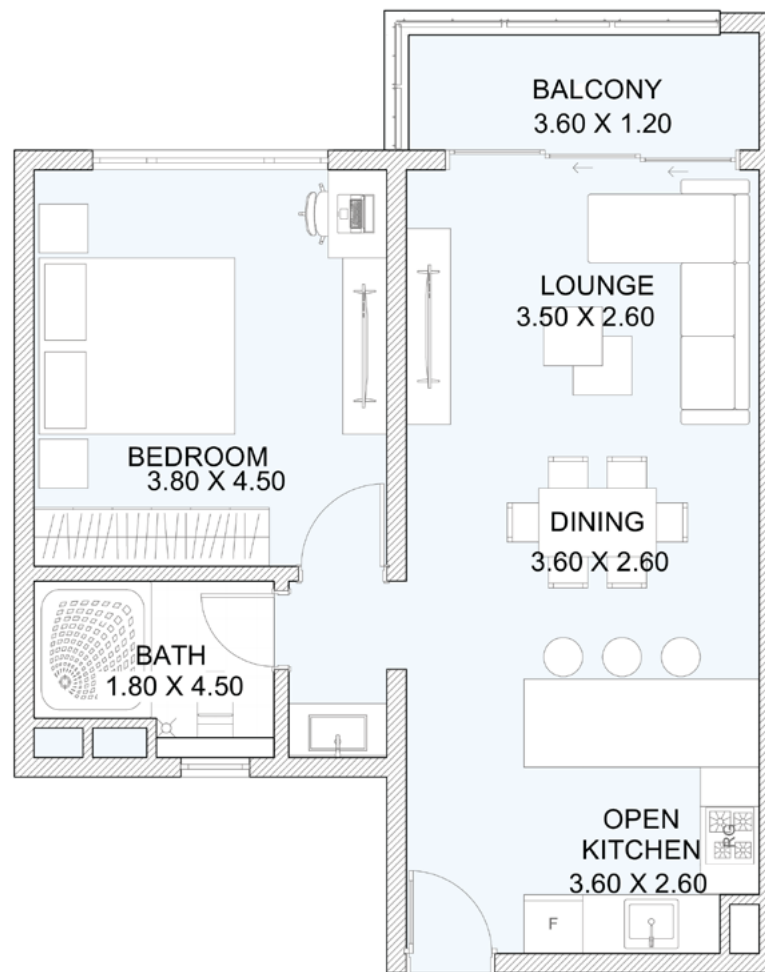
Internal Area	117 sq.m
External Area	5 sq.m
Total Area	122 sq.m



STUDIO

From 7th Floor to 27th Floor

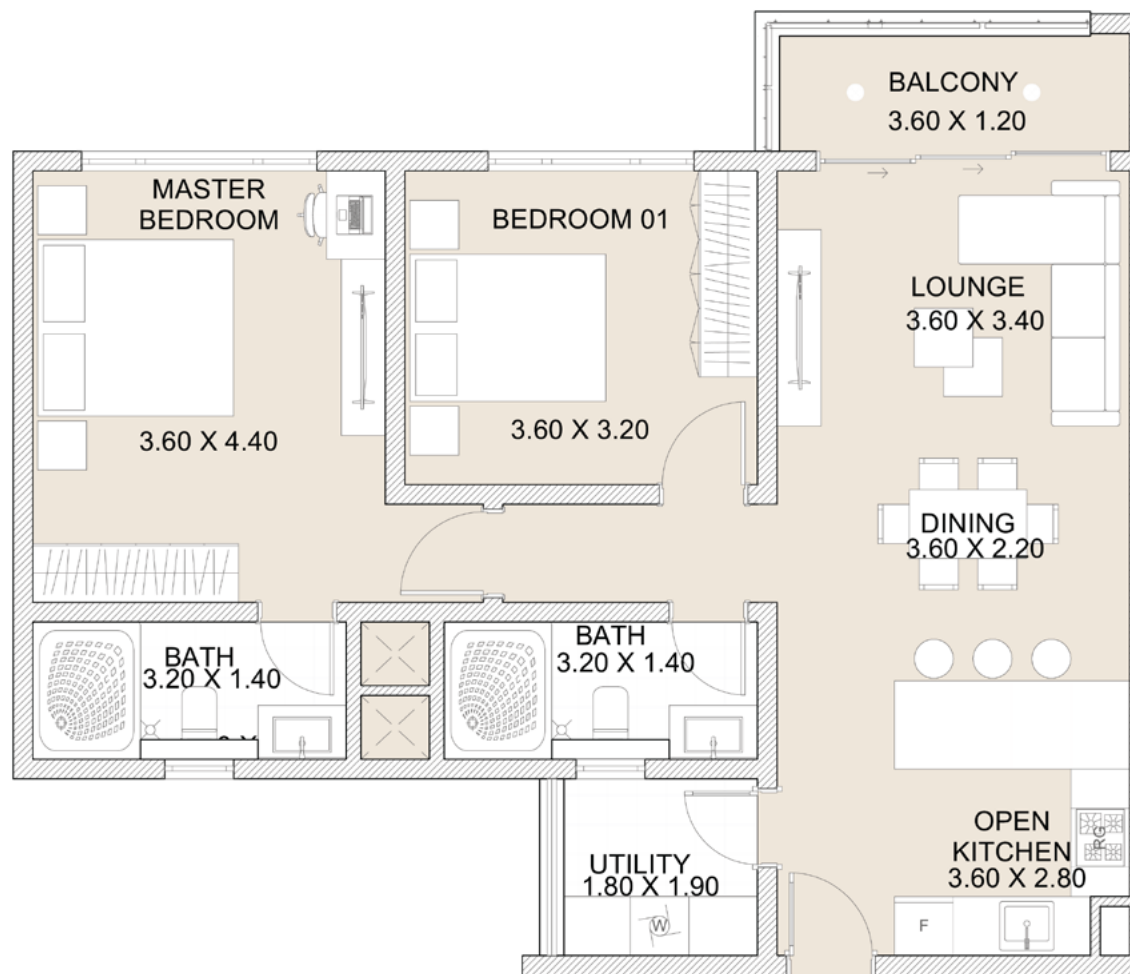
Internal Area	32 sq.m
External Area	-
Total Area	32 sq.m



1B

From 7th Floor to 27th Floor

Internal Area	57 sq.m
External Area	5 sq.m
Total Area	62 sq.m

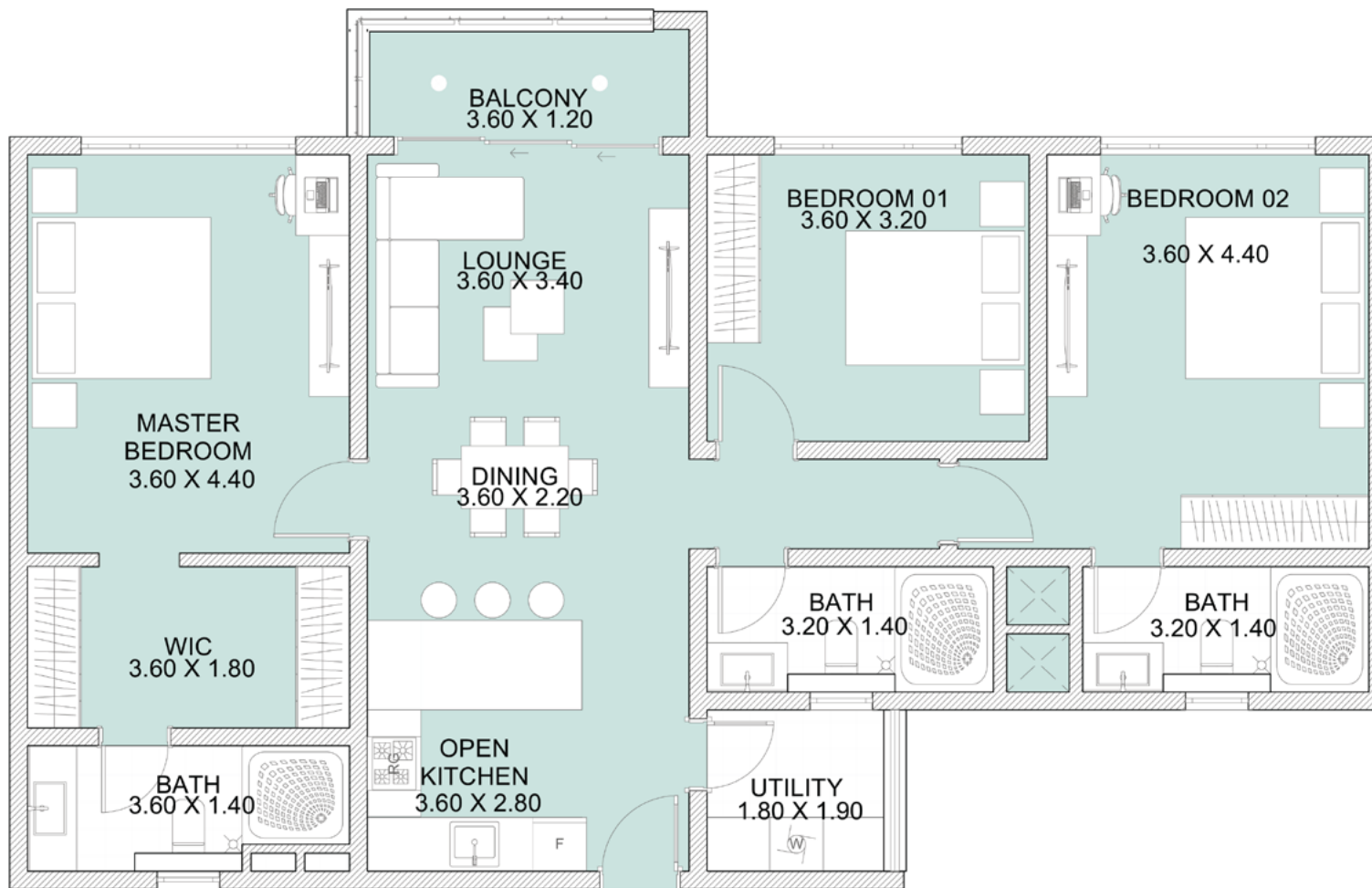


2B

From 7th Floor to 27th Floor

Internal Area	87 sq.m
External Area	5 sq.m
Total Area	92 sq.m





3B

From 7th Floor to 27th Floor

Internal Area	117 sq.m
External Area	5 sq.m
Total Area	122 sq.m

FLOOR PLANS

All drawings and dimensions are approximate. Drawings are not to scale and are subject to change without notice. The developer reserves the right to make revisions. The units are measured at typical floors in the building and columns may vary in size depending on the floor level. The furnishing and accessories shown are for representation only.

The availability, length and width of the balcony varies depending on which floor and which orientation the unit is located within the building. There will be slight differences in the internal areas between the same unit types depending on the shaft sizes that go through the units.

REPORTAGE TOWERS

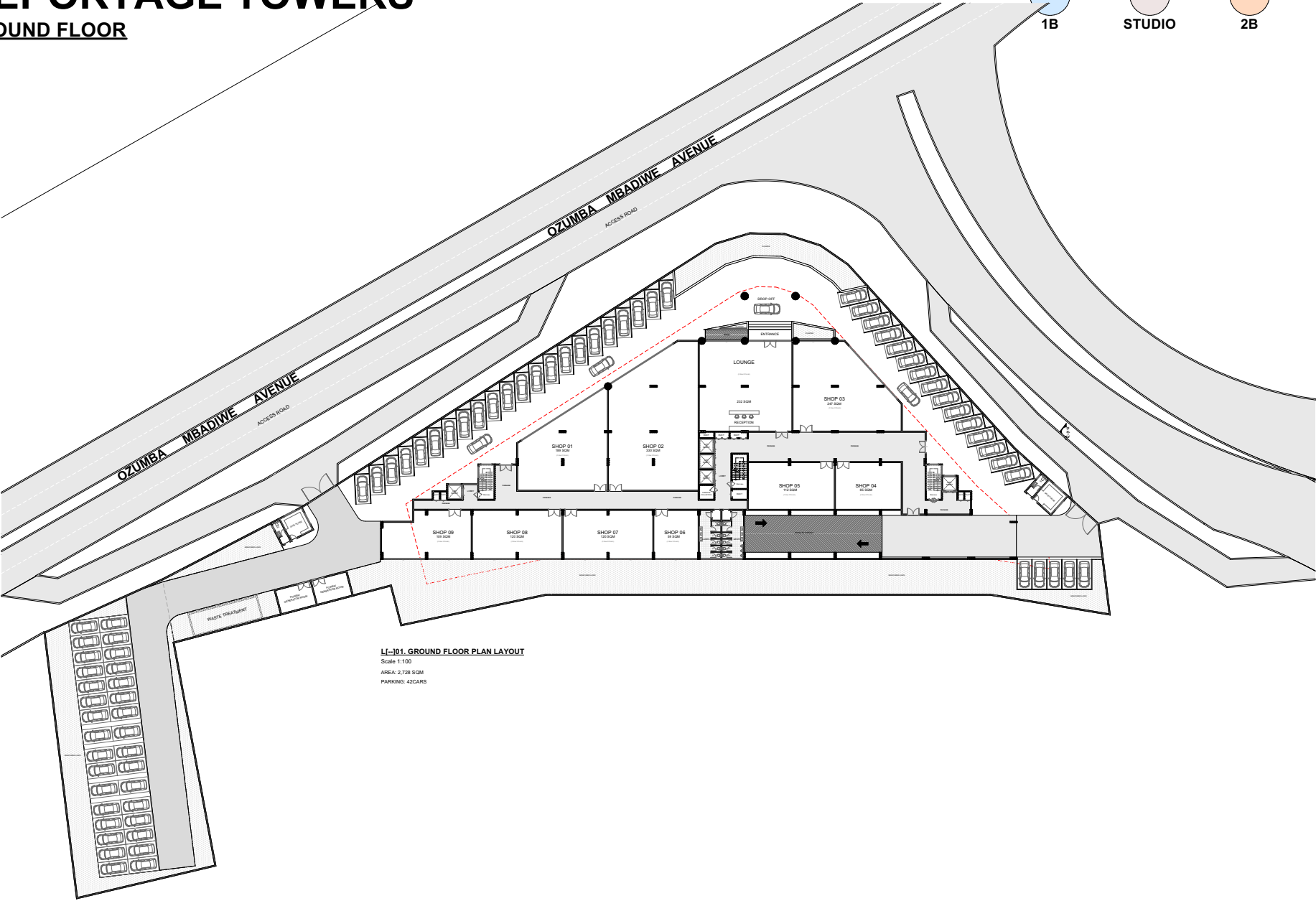
GROUND FLOOR

1B

STUDIO

2B

3B



REPORTAGE TOWERS

TYPICAL 1ST- 3RD FLOOR PARKING



L[--]02. TYPICAL 1ST - 3RD FLOOR PLAN LAYOUT
Scale 1:100
AREA: 2,795 SQM
PARKING: 82CARS

REPORTAGE TOWERS

4TH FLOOR



L[-]103. 4TH FLOOR PLAN LAYOUT

Scale 1:100

AREA: 2,795 SQM

REPORTAGE TOWERS

5TH FLOOR



1B



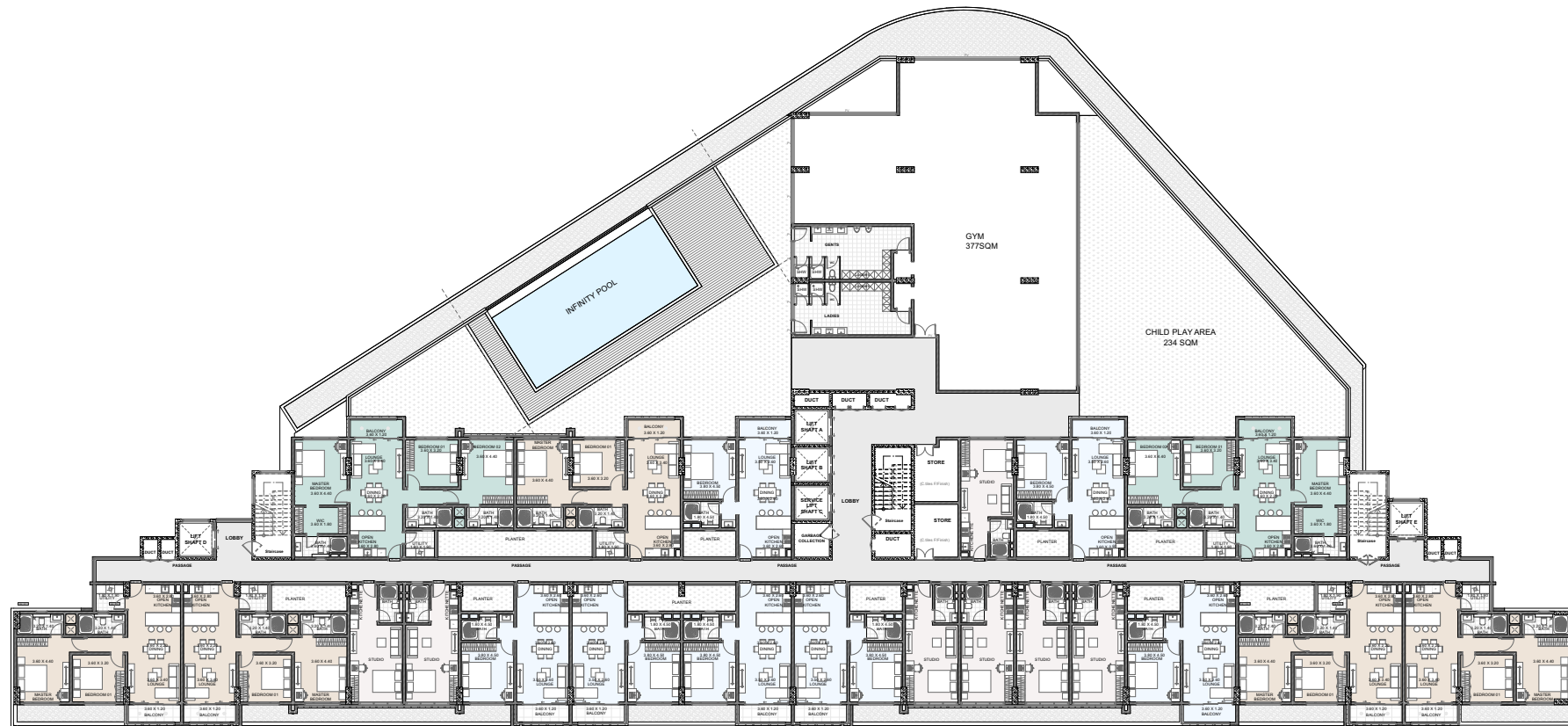
STUDIO



2B



3B



L|--104. 5TH FLOOR PLAN LAYOUT

Scale 1:100

AREA: 2,844 SQM

STUDIO UNIT - 7N0.

1 BED UNIT - 7 N0.

2 BED UNIT - 5 N0.

3 BED UNIT - 2 N0.

REPORTAGE TOWERS

6TH FLOOR



L1--J05. 6TH FLOOR PLAN LAYOUT

Scale 1:100

AREA: 2,121 SQM

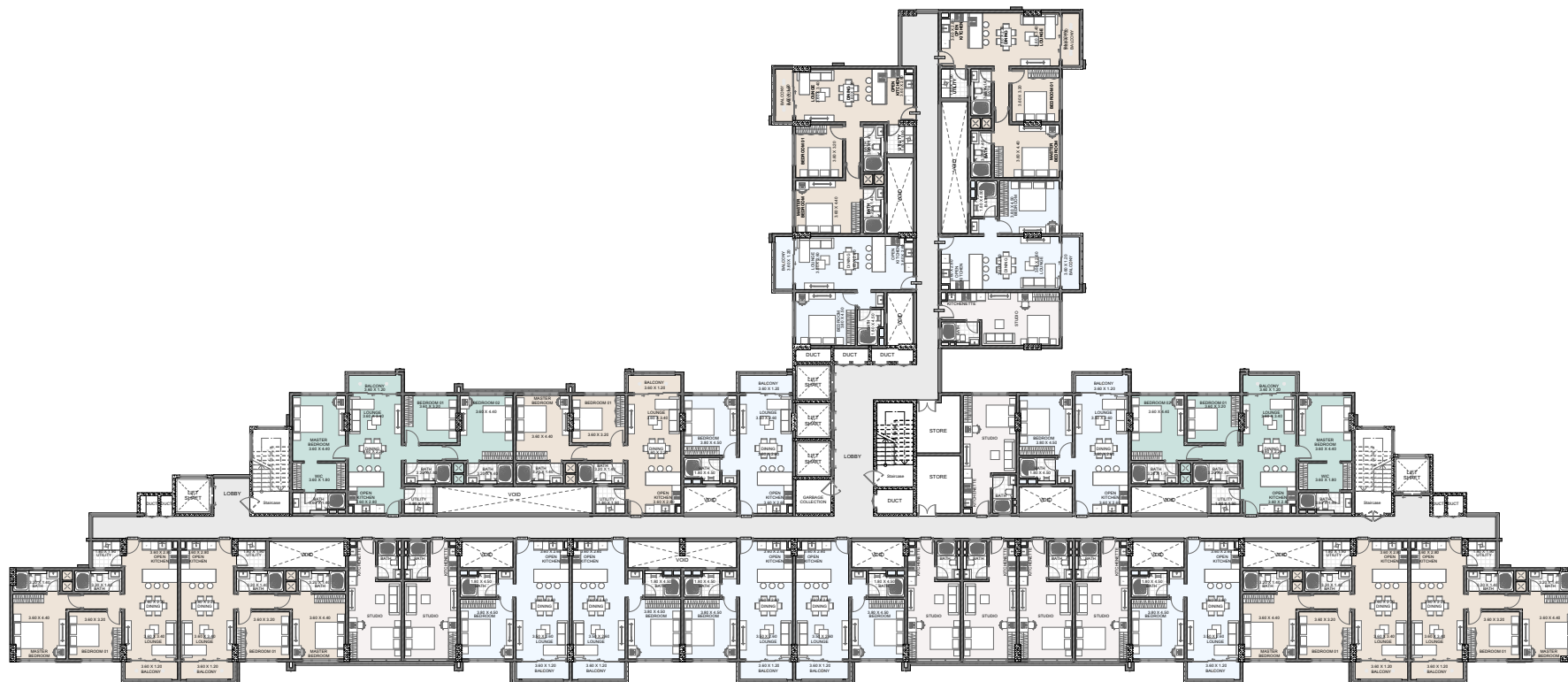
STUDIO UNIT - 8 NO.

1 BED UNIT - 9 NO.

2 BED UNIT - 7 NO.

3 BED UNIT - 2 NO.

TYPICAL 7TH TO 27TH FLOOR



L[--]06. TYPICAL 7TH-27TH FLOOR PLAN LAYOUT

Scale 1:100

AREA: 2,095 SQM

STUDIO UNIT - 8 N0.

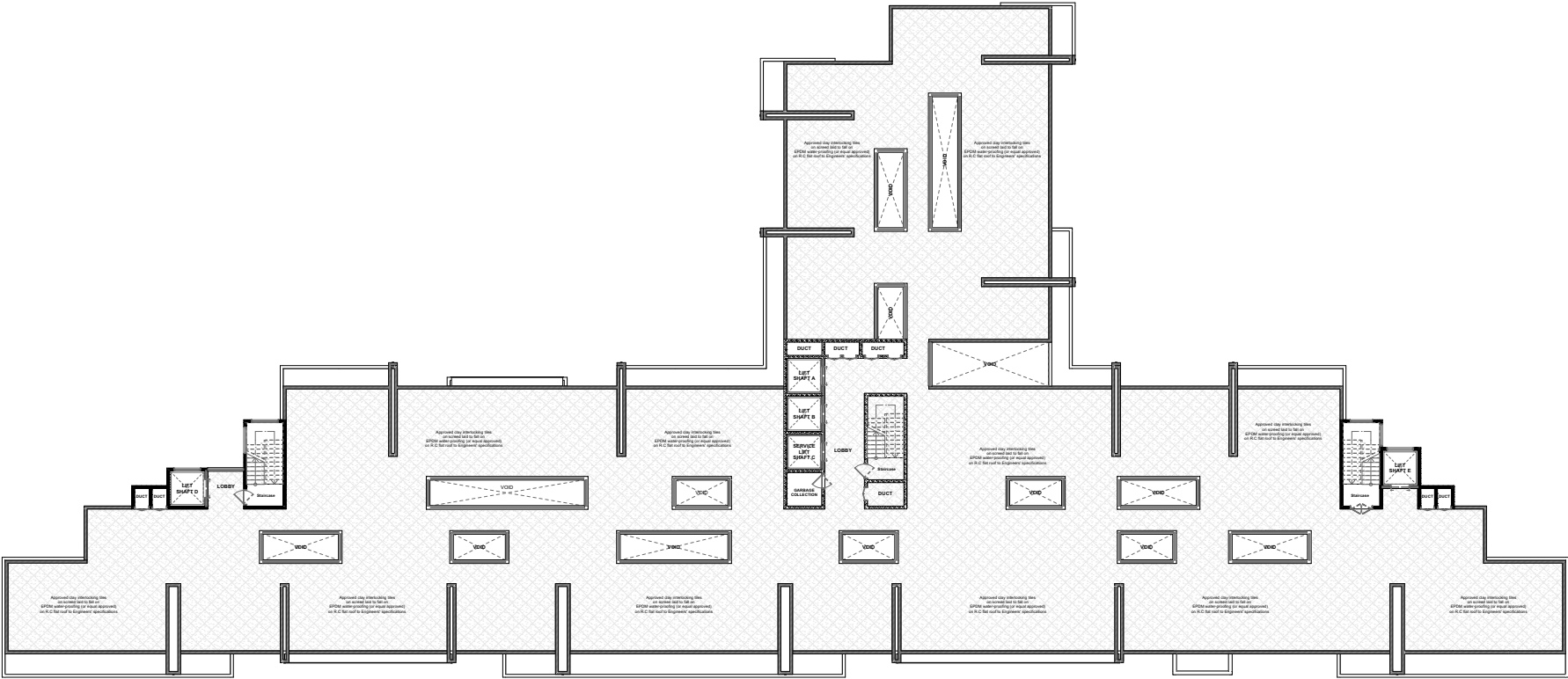
1 BED UNIT - 9 NO.

2 BED UNIT - 7 NO.

3 BED UNIT - 2 NO.

REPORTAGE TOWERS

28TH FLOOR- TERRACE LEVEL



L[-]07. 28TH FLOOR PLAN LAYOUT TERRACE LEVEL

Scale 1:100





Reportage.
MEH Development