

Résidence Côme



Reportage.

Reportage Group is one of the largest private developers in the United Arab Emirates, with projects in UAE, Egypt, Nigeria, Kenya, Rwanda, Türkiye, Morocco, KSA, Uganda, Azerbaijan, Pakistan, France, Luxembourg and upcoming international projects.

We are focused and consistent in our objective to provide innovative, modern housing solutions that not only offer our investors an outstanding value but also provide the home buyers a safe place to live in.

Our mission is to be amongst the most trusted real estate companies in the world by developing and providing homes that are equally elegant and accessible and provide you with a sense of belonging.

We look forward to the upcoming years, and aspire to expand our real estate business globally. Building legacies in UAE and beyond since 2014.

OWN YOUR STORY

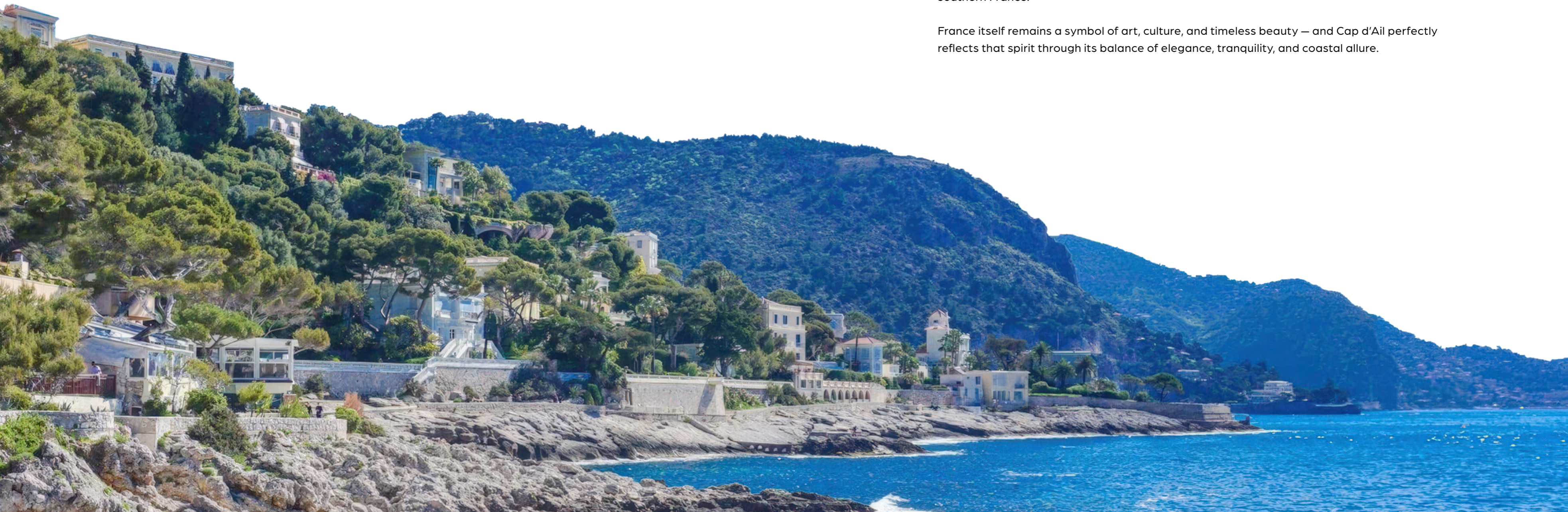
CAP D'AIL

France's Gateway to Coastal Elegance

Nestled on the French Riviera, Cap d'Ail is one of France's most elegant coastal towns — a place where the charm of the Mediterranean meets the sophistication of the Côte d'Azur.

Just minutes from Monaco, Cap d'Ail blends natural beauty with modern living, offering breathtaking sea views, lush greenery, and a serene atmosphere that defines the essence of southern France.

France itself remains a symbol of art, culture, and timeless beauty — and Cap d'Ail perfectly reflects that spirit through its balance of elegance, tranquility, and coastal allure.





Project INTRODUCTION

Reportage Properties presents Résidence Côme, a new chapter of refined living on the French Riviera.

Located in Cap d'Ail, at the entrance to Monaco, this boutique residential building embodies the grace of timeless design inspired by the spirit of the Mediterranean Sea.

Crafted for the few who value the exceptional, Résidence Côme is a private address where natural harmony and quiet sophistication define every detail – an invitation to experience elegance, serenity, and lasting value



LOCATION

Features

Perfectly positioned between the sea and the city, Résidence Côme offers quick access to every Riviera destination.

- | | |
|------------------|----------------------------|
| 5 min | Monaco Center |
| 5 min walk | Cap d'Ail Beach |
| 30 min | Nice International Airport |
| 30 min | Cap 3000 Mall |
| 35 min | Polygone Riviera |
| 45 min | Cannes Croisette |





Project
DETAILS

Type: Boutique Residential Building

Total Floor Area: 1,132 sq.m

Number of Floors: 4

- 3 underground levels – secure private parking
- 1 office floor – total area 300 sq.m
 - Office A: 130 sq.m
 - Office B: 60 sq.m
 - Office C: 110 sq.m
- 3 residential floors (rooftop level with private outdoor areas)



UNIT MIX

STUDIO	1 Unit
1-BEDROOM	5 Units
2-BEDROOMS	2 Units
3-BEDROOMS	3 Units
<hr/>	
TOTAL	11 Units

Designed to blend with
NATURE



The art of
**REFINED
LIVING**





Project AMENITIES

Résidence Côme offers a selection of refined amenities designed to enhance comfort, privacy, and everyday living.



Private and secure
parking (optional
closed boxes)



Keypad entry and
video intercom



Rooftop terraces with
Jacuzzis (for top-floor
apartments)



Spacious private
cellars

Unit FEATURES

- Private Balconies / Terraces as per unit plan
- Modern kitchen with cabinets and countertops
- Fully tiled bathrooms and guest toilets (where applicable)
- En-suite bedrooms as per layout
- Lacquered aluminum double-glazed windows and doors
- Built-in wardrobes in all bedrooms
- Reinforced security entrance door
- Shower in each bathroom
- Vanity units and mirrors
- Glass railings for balconies and terraces
- Smart home automation system
- Satellite master antenna and fiber optic connection for high-speed internet

Every detail crafted for
COMFORT



ELEGANCE
lives in every space



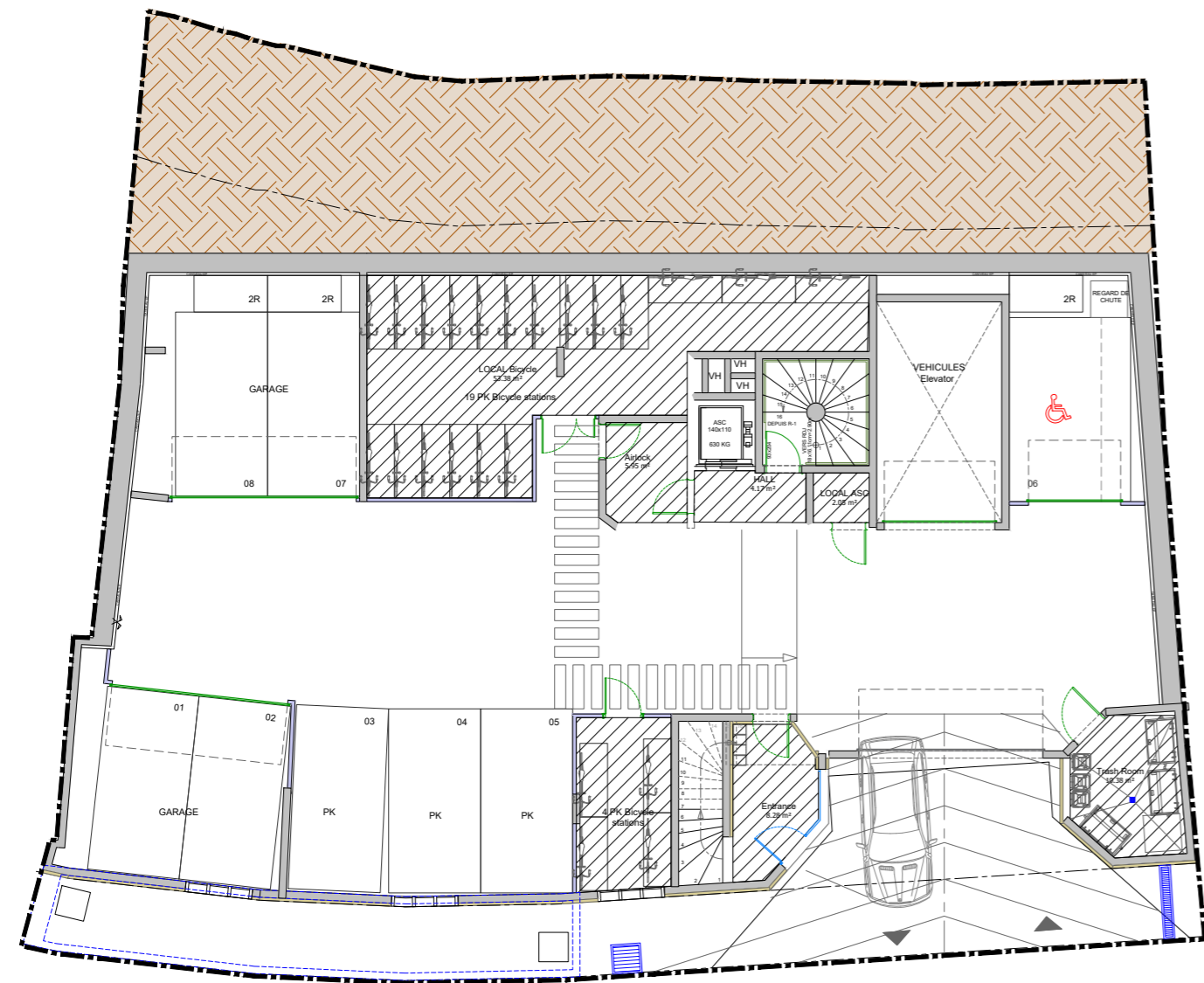


Floor
PLAN

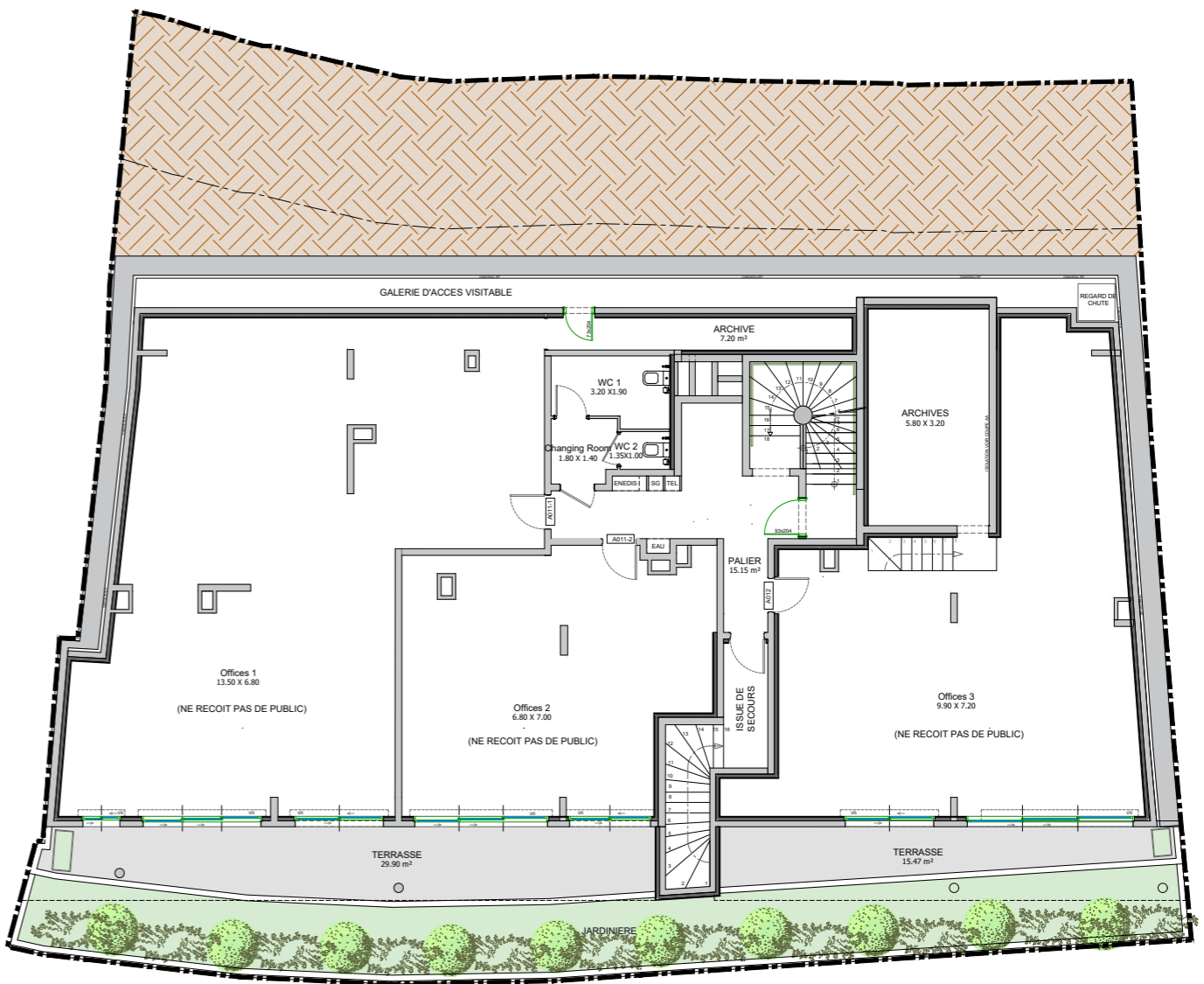
Basement 01



Ground Floor



1st floor (Offices)



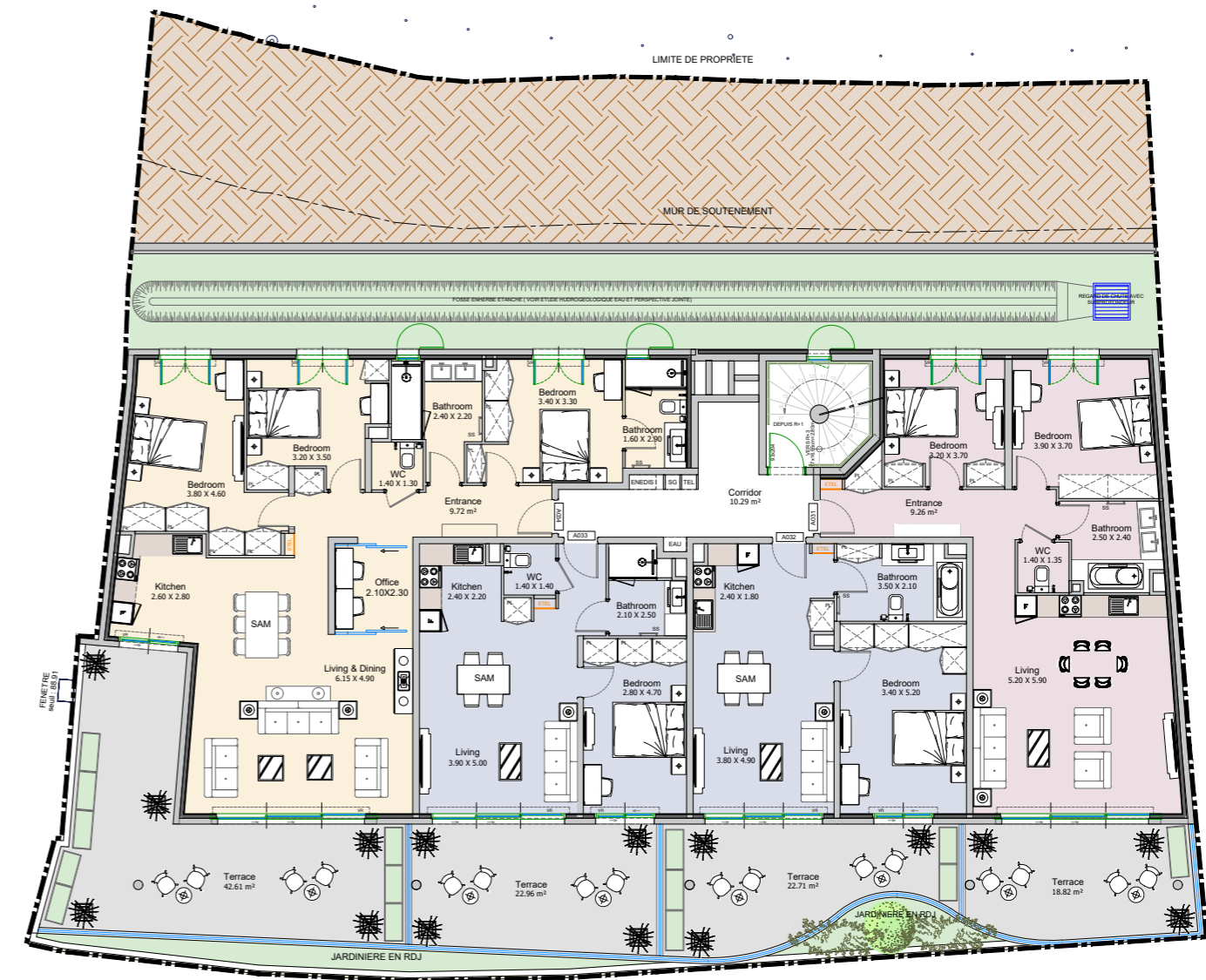
2nd floor

STD 1B



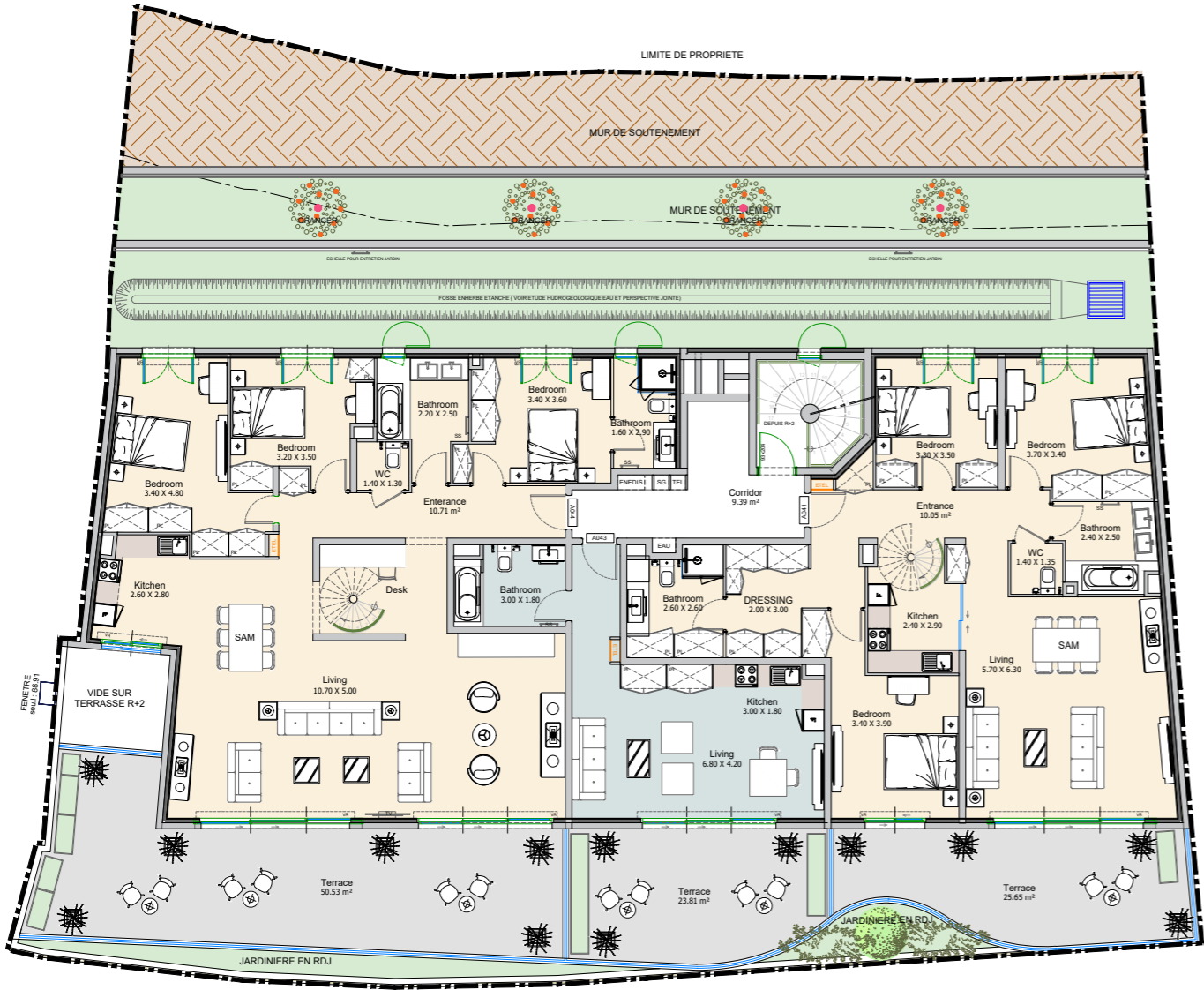
3rd floor

1B 2B 3B

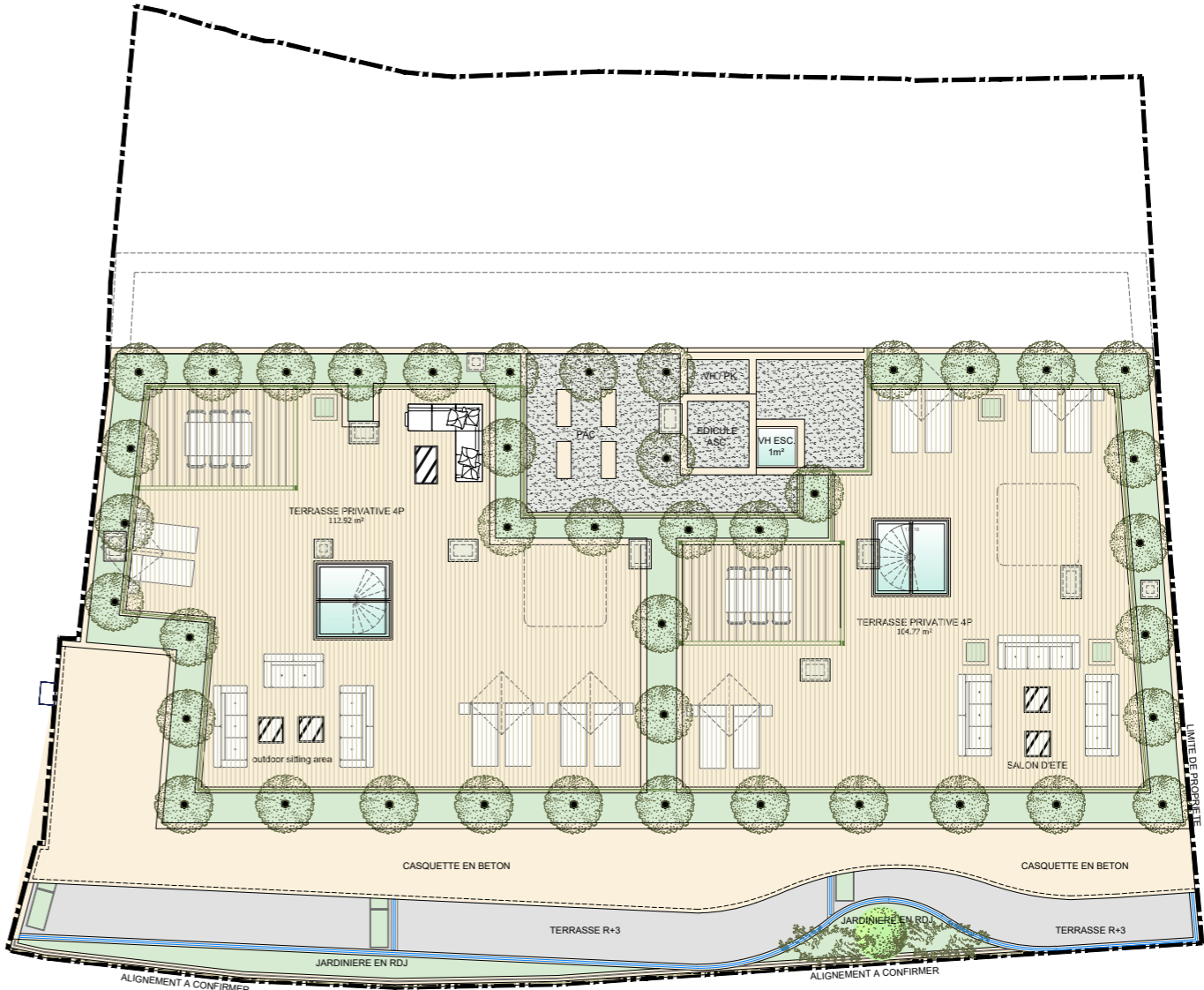


4th floor

STD 3B



Roof



Reportage.

France

8 rue Bayen
F-75017 Paris
+352 26 60 22 11
info@reportageproperties.eu

Abu Dhabi-UAE | Head Office

Tamouh Tower
28th Floor, Al Reem Island
P.O. Box: 111949
Tollfree: +971 800 77 55 2
info@reportageuae.com

Luxembourg

1a rue Guillaume de Machault
L-2111 Luxembourg
Luxembourg
+352 26 60 22 11

Dubai-UAE

Anantara Business Tower
3rd Floor, Business Bay
P.O. Box: 27446
Tollfree: +971 800 77 55 2
info@reportageuae.com

Cairo-Egypt

Building 217
North Teseen St.
New Cairo
T: +20 12 0008 1190
info@reportageeg.com

Istanbul-Türkiye

Maslak Mh. Sümer Sk.
No:4, İç Kapı No:3, Bodrum Kat,
Maslak Office Building (MOB) Sarıyer
T: +90 530 774 9595
info@reportage.com.tr

Riyadh-KSA

Building No. 3230
Al Aflaj St., Al Suwaidi
P.O. Box 12791
T: +966 11 215 1110
info@reportageuae.com

Moscow-Russia

Yefremova Street 10s1, k4/4
bld sadovye kvartaly
P.O. Box 119048
info@reportagerussia.com

Kampala, Uganda

Plot 4, Philip Road
Near German Embassy
Kololo, Kampala, Uganda
+256 756 111 434 | +256 763 331 572
info@reportageug.com

Lahore - Pakistan

Plaza No. 185, Broadway
Commercial phase 8, DHA Lahore
+923309991111
Info@reportageempire.com

Kigali, Rwanda

KG 334 ST 10, Nyarutarama,
Kigali, Rwanda
+250738532168 | +250794100607
info@reportagerw.com

Nairobi, Kenya

46 Kabasiran, Lavington
P.O. box 38802-00623
Tel. +254 754 108108 / +254 208 108108

Lagos, Nigeria

No. 2 Obudu Close, Osborne Foreshore
Estate, Phase 1, Ikoyi, Lagos Nigeria
+234 810 859 9924
Info@reportage.ng

For more information, visit reportageuae.com or call **800 77 55 2 | +971 50 244 1078**



Legal Disclaimer:

The information contained in this brochure is confidential and is for the exclusive use of the recipient. This brochure may not be reproduced, distributed, delivered, or furnished to any person without the prior written approval of Reportage Properties. No representation or warranty (expressed or implied) is made or can be given with respect to the accuracy or completeness of the information herein, or that any future offer of units or apartments in the project will conform to the terms described herein. Nothing in this leaflet should be constructed as financial, legal, tax or regulatory advice. All accessories such as electronics, furniture, white goods, decorative elements and so forth included in this brochure are not part of the standard unit and used for illustration purposes only. All plans, layouts, pictures, renderings, information and details included in this brochure are indicative only and may change at any time up to the final 'as built' status in accordance with final designs of the project and regulatory approvals and planning permissions.



Résidence Côme

Reportage.

reportageeurope.com