

DUBAI LAND

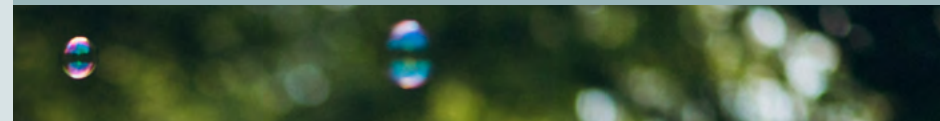


برج - رُكَّانُ
RUKAN - TOWER



جوهر الحياة

THE ESSENCE
OF LIFE



—
YOUR FUTURE
INVESTMENT

REPORTAGE PROPERTIES

Since being established in 2014, Reportage Properties has aimed to provide innovative housing solutions by developing and delivering property in Abu Dhabi and Dubai which offer our investors outstanding value and are completed over a timely period. Reportage Properties is committed to creating homes with unrivalled standards of living from a household brand you can rely on. Reportage Prime is a subsidiary under the umbrella of Reportage Properties.

ريپورتاج العقاريه

تهدف ريپورتاج العقارية، منذ تأسيسها في عام ٢٠١٤، إلى توفير حلول سكنية مبتكرة من خلال تطوير وتسليم المشاريع العقارية في أبوظبي ودبي والتي تقدم لمستثمريها قيمة فريدة من نوعها حيث يتم الالتزام بتسليم المشاريع العقارية في الموعد المحدد. تلتزم ريپورتاج العقارية بتصميم منازل ذات مستويات معيشية لا مثيل لها وتطمح لتكون علامة تجارية يمكنك الاعتماد عليها. ريپورتاج برايم هي شركة تابعة لريپورتاج العقارية.



ABOUT DUBAI LAND

Dubailand stretches out across an immense 3 billion square feet in the heart of the city, making it the largest district in Dubai. The area was designed to be Dubai's entertainment hub and is divided between a vibrant mix of vast residential communities and popular leisure attractions. Well-known residential projects and communities such as Al Barari and Arabian Ranches fall within the district, as well as the anticipated upcoming mega-project of Mohammed Bin Rashid City.

عن دبي لاند

تمتد دبي لاند على مساحة هائلة تبلغ ٣ مليار قدم مربع في قلب المدينة، مما يجعلها أكبر منطقة في دبي. تم تصميم المنطقة لتكون مركزاً ترفيهياً في دبي وتتقسم إلى مزيج نابض بالحياة من المجتمعات السكنية الفسيحة وأماكن ترفيهية شهيرة. تقع المشاريع والمجتمعات السكنية المعروفة مثل البراري والمرابع العربية ضمن المنطقة، بالإضافة إلى المشروع الضخم المتوقع لمدينة محمد بن راشد.

DUBAI'S ENTERTAINMENT HUB



PREMIUM LOCATION

Rukan Tower is in a completely well serviced community fully equipped to cater to the residents every need. Rukan Tower is surrounded by Rukan Lofts, large parks, shopping centres, cycling tracks and a swimming pool. Due to its location in Dubai Land, Rukan Tower also provides residents excellent connectivity to many other key areas such as Downtown Dubai, Dubai Creek Harbour and Dubai Marina.

موقع متميز

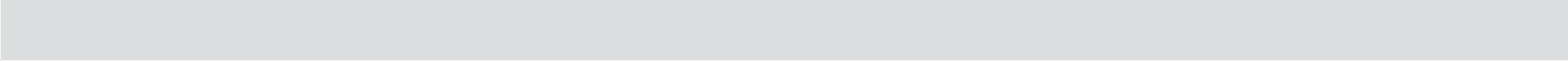
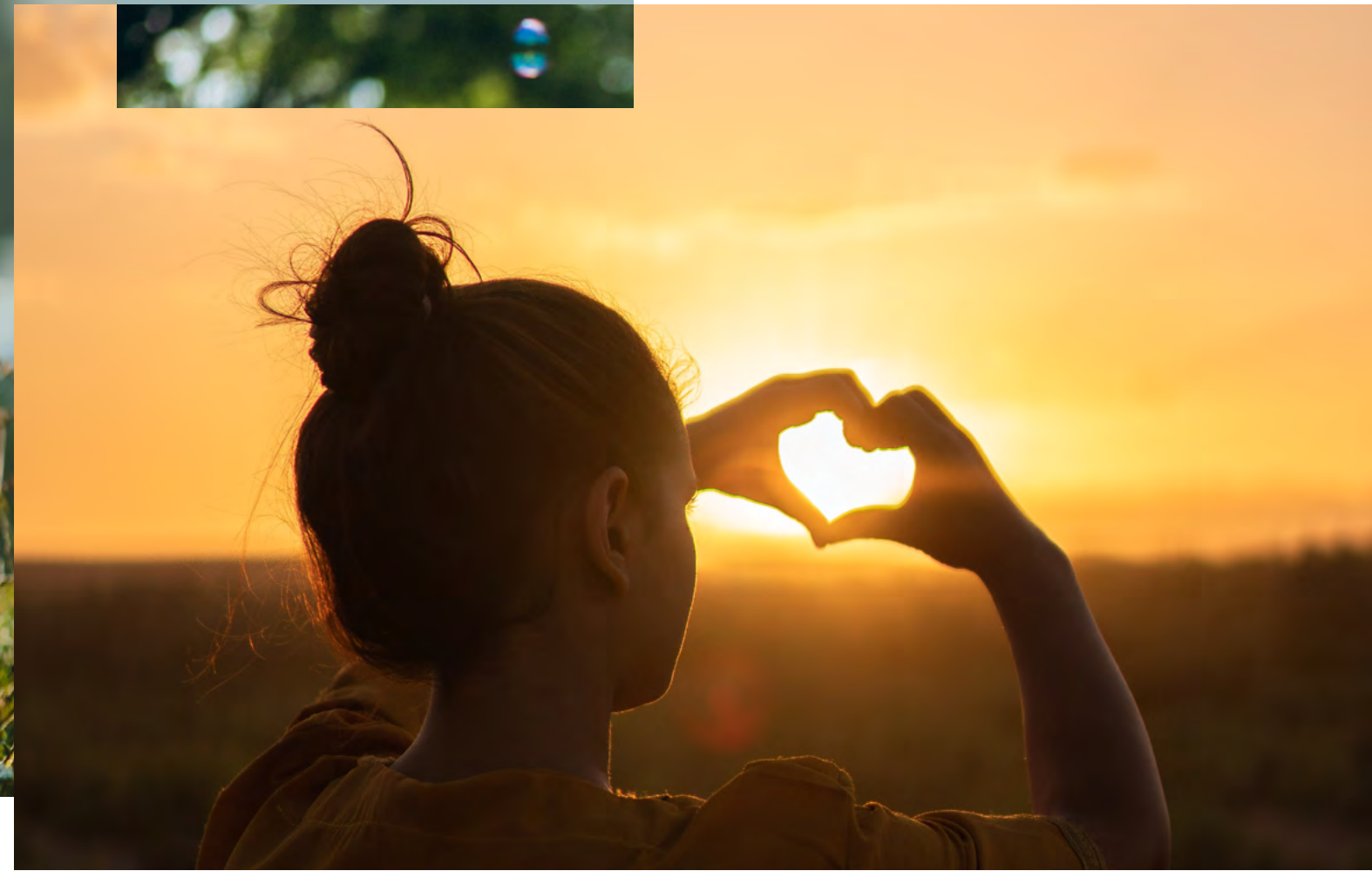
يقع برج ركان في مجتمع يتمتع بخدمات ممتازة، مجهز بالكامل لتلبية كل احتياجات السكان. يحيط ببرج ركان، ركان لوفتس وحدائق كبيرة ومراكز التسوق ومسارات لركوب الدراجات ومسبح. بسبب موقعه في دبي لاند، يوفر برج ركان اتصالاً ممتازاً للسكان بالعديد من المناطق الرئيسية الأخرى مثل داون تاون دبي وميناء خور دبي ومرسى دبي.

A PLACE
YOU CAN CALL
HOME





—
WHERE TRAN-
QUILITY IS
A WAY OF LIFE



سهولة الحركة لأهم المواقع

15 MINUTES GLOBAL VILLAGE

20 MINUTES MIRACLE GARDEN

15 MINUTES HAMDAN SPORTS COMPLEXES

25 MINUTES DUBAI INTERNATIONAL AIRPORT

15 MINUTES IMG WORLDS OF ADVENTURE

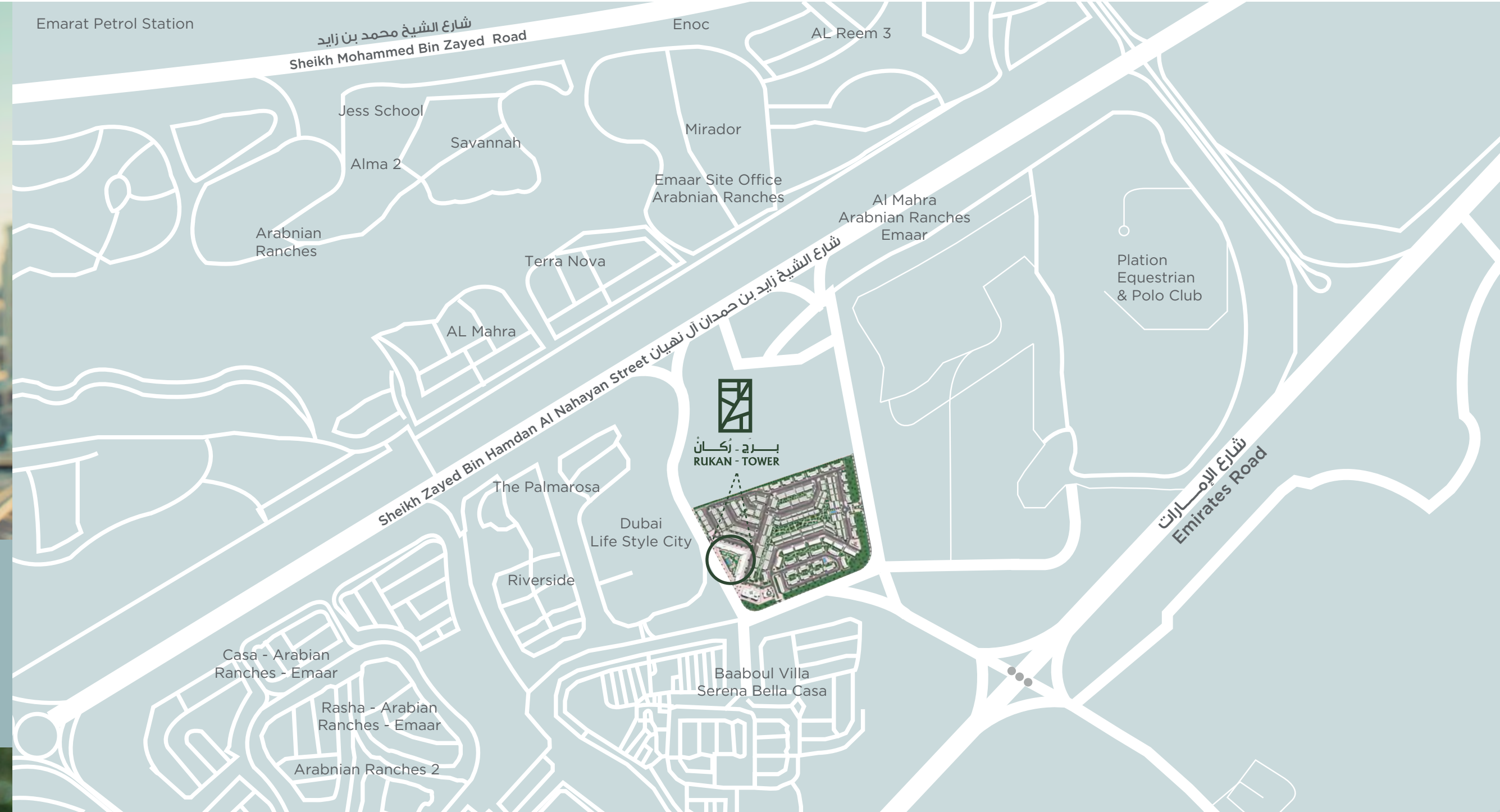
25 MINUTES MALL OF THE EMIRATES

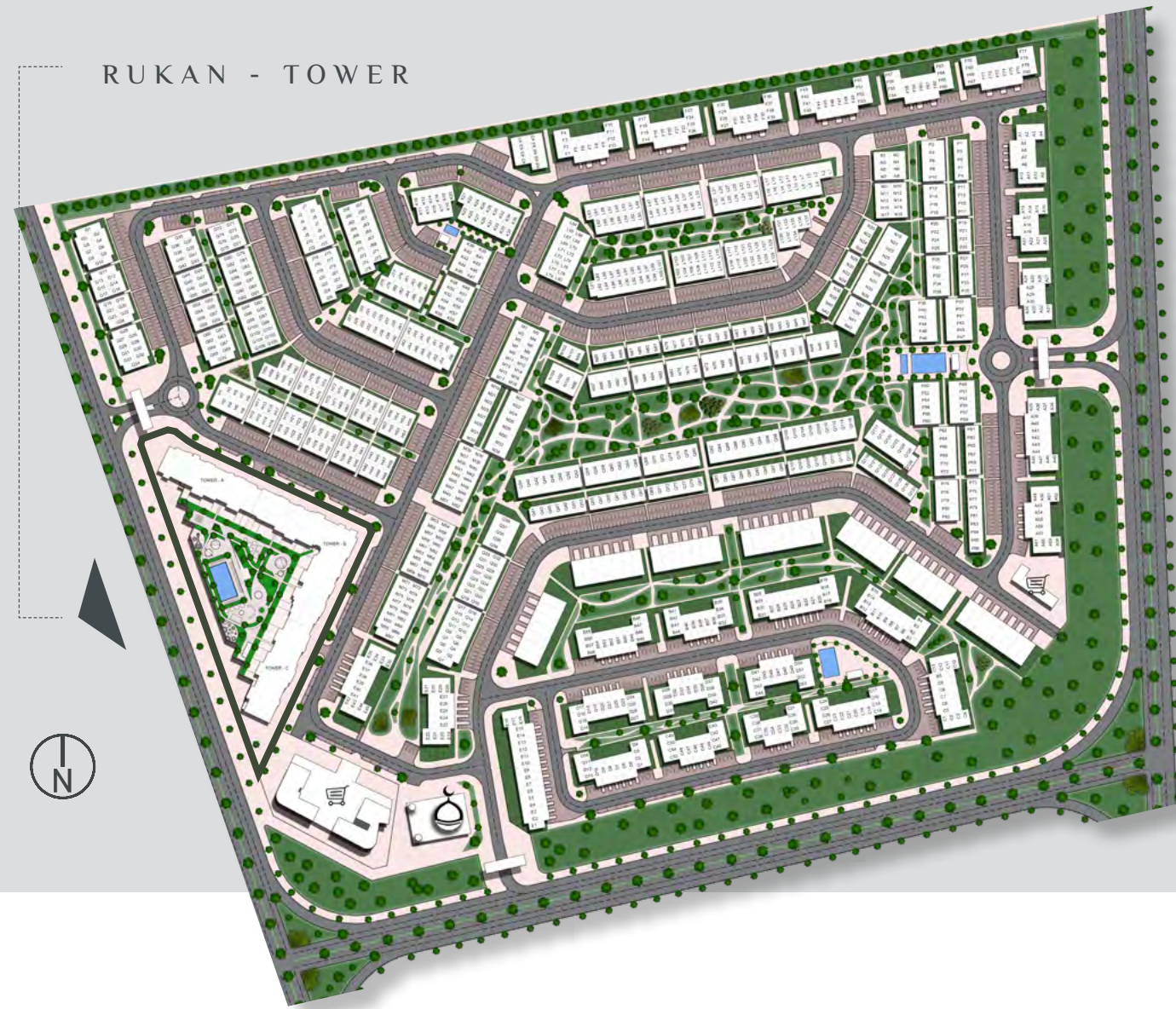
20 MINUTES BURJ KHALIFA/ DUBAI MALL

30 MINUTES HAMDAN SPORTS COMPLEXES

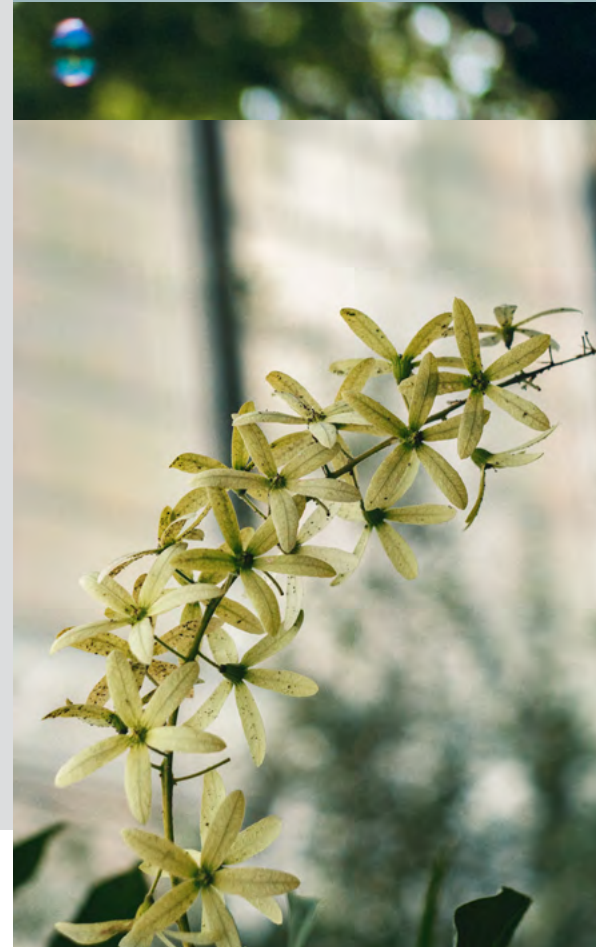


STAY WELL CONNECTED





UNIQUE
MASTER PLAN

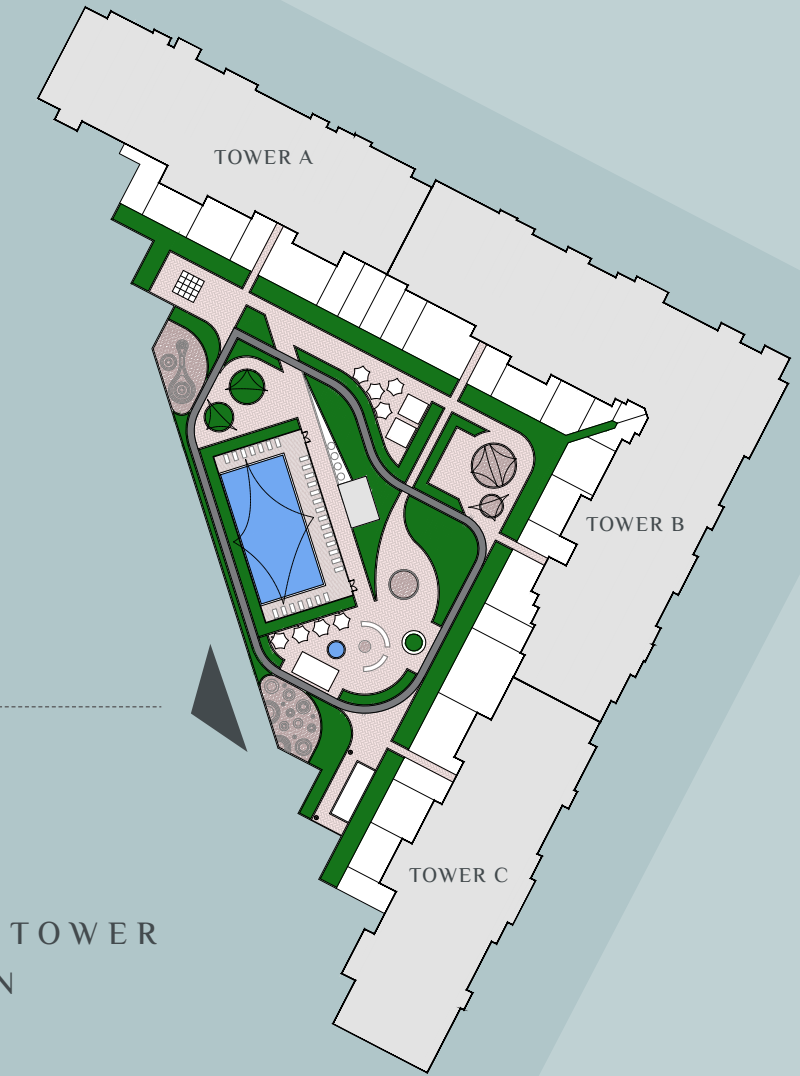


RUKAN TOWER COMMUNITY

A mid-rise residential building in a gated community with exceptional resort like facilities positioned conveniently right next to the Rukan Community entrance in Dubai Land. Rukan Tower is made up of three connected towers: Tower A, Tower B and Tower C which offer 608 apartments with various designs and area options.

مجتمع برج رُكان

مبنى سكني متوسط الارتفاع في مجتمع مسور يتمتع بخدمات استثنائية ويقع بشكل ملائم بجوار مدخل مجتمع ركان في دبي لاند. يتكون برج ركان من ثلاثة أبراج متصلة: برج A ، برج B وبرج C والتي توفر ٦٠٨ شقق بتصميمات مختلفة وخيارات عديدة للمساحات.



RUKAN - TOWER
KEY PLAN



EXPERIENCE A
HIGHER STANDARD
OF LIVING

RUKAN TOWER

A beautifully designed residential building providing you with the lifestyle you deserve. Rukan Tower offers exceptional facilities in Dubai Land, next to Arabian Ranches and is located in a unique location in the Rukan Community while presenting extraordinary views of the surrounding swimming pools and greenery.

برج رُكَان

مبنى سكني رائع مصمم ليوفر لك نمط الحياة الذي تستحقه. يوفر برج ركان مرافق استثنائية في دبي لاند ، بجانب المرافق العربية ، ويتمتع بموقع مميز في مجتمع روكان ، بينما يقدم إطلالات استثنائية على المساح والمساحات الخضراء المحيطة.





—
 RIGHT AT
 THE ENTRANCE
 OF RUKAN
 COMMUNITY

Rukan Tower's convenient location right at the entrance of Rukan Community provides easy access to residents and visitors alike coming into the community.

يوفر موقع برج ركان، الذي يقع عند مدخل مجتمع ركان، سهولة الحركة إلى السكان والزوار القادمين إلى المجتمع.





LIVING ROOM | SLEEK INTERIORS WITH CLEAN LINES, NEUTRAL TONES & METICULOUS FINISHES.

—
YOUR
COMFORT
IS OUR
PRIORITY





LIVING AT
ITS BEST



Every apartment radiates with natural lighting and overlooks the Rukan Community to provide beautiful views to the residents of the surrounding areas from main roads, to pools, to villas.

تمتع كل شقة بإضاءة طبيعية وتطل على مجتمع ركان لتوفير مناظر جميلة لسكان المناطق المحيطة من الطرق الرئيسية إلى حمامات السباحة وكذلك الفيلات.



BEDROOM | NATURAL LIGHT RADIATING THROUGH EVERY SPACE



STUDIO | UNIQUE DESIGNS WITH EXCEPTIONAL VIEWS

—
MODERN
INTERIORS WITH
REMARKABLE
OPEN VIEWS






—
BE PART OF A
CONNECTED
COMMUNITY



AMENITIES AND FACILITIES


Landscape Gardens
(Zen Garden, Art Garden,
Yoga Garden and Planter Areas)
حدائق المناظر الطبيعية


GYM
صالة ألعاب رياضية


Mosque
مسجد


Covered & Uncovered
Parking Areas
مواقف مغطاه / غير
مغطاه للسيارات


Designated BBQ Areas
مناطق مخصصة للشواء


12 Large Lifts
١٢ مصعد كبير


Swimming pools
مساح


Running tracks
مسارات للجري


Private Terrace/Balcony
شرفات خاصة


Pet Area
منطقة لعب للحيوانات الأليفة





RUKAN - TOWER

UNIT FEATURES

- Kitchen cabinets and countertops
- Balconies as per unit plan
- Built-in wardrobes in bedrooms
- Fully tiled bathrooms, in-suites, and guest toilets, wherever applicable
- Double glazed windows
- Central air conditioning

برج - رُكان
RUKAN - TOWER

ريپورتاج العقارية Reportage. Properties

Abu Dhabi | Head Office
Tamouh Tower
27th Floor, Al Reem Island
P.O. Box: 111949
United Arab Emirates
Phone: +971 2 204 3300
info@reportageuae.com

Dubai Office
Oberoi Centre
3rd Floor, Business Bay
P.O. Box: 27446
United Arab Emirates
Phone: +971 4 240 5556
info@reportageuae.com

Escrow Account Details
Account Name: Rukan Escrow
Account No.: 002393135911
IBAN No.: AE550070035911393101002
Currency: AED
Swift Code: ARAIAEAD

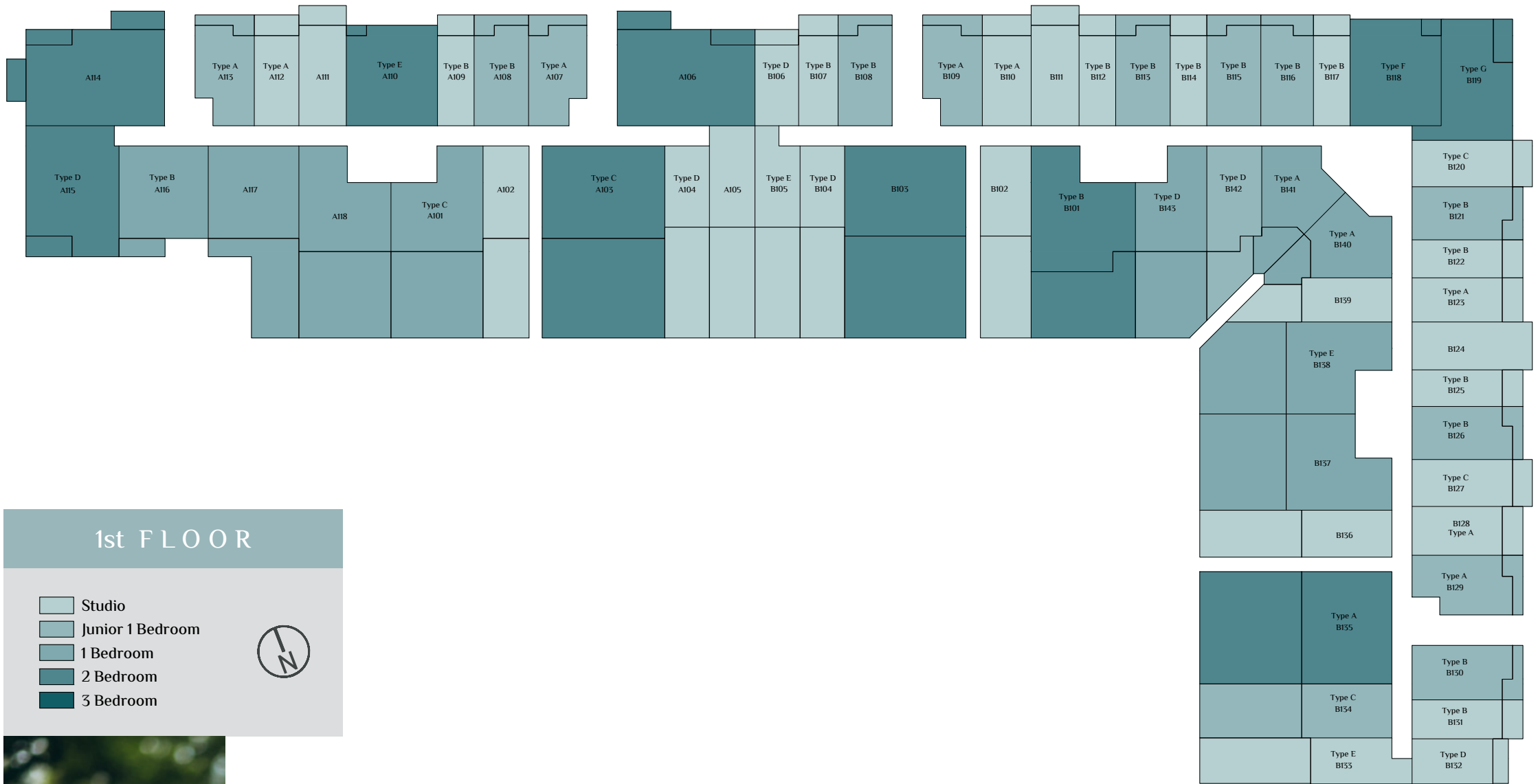
For more information, visit reportageuae.com
or call 800 7755 2 | +971 50 244 1078





برج - رُكان
RUKAN - TOWER

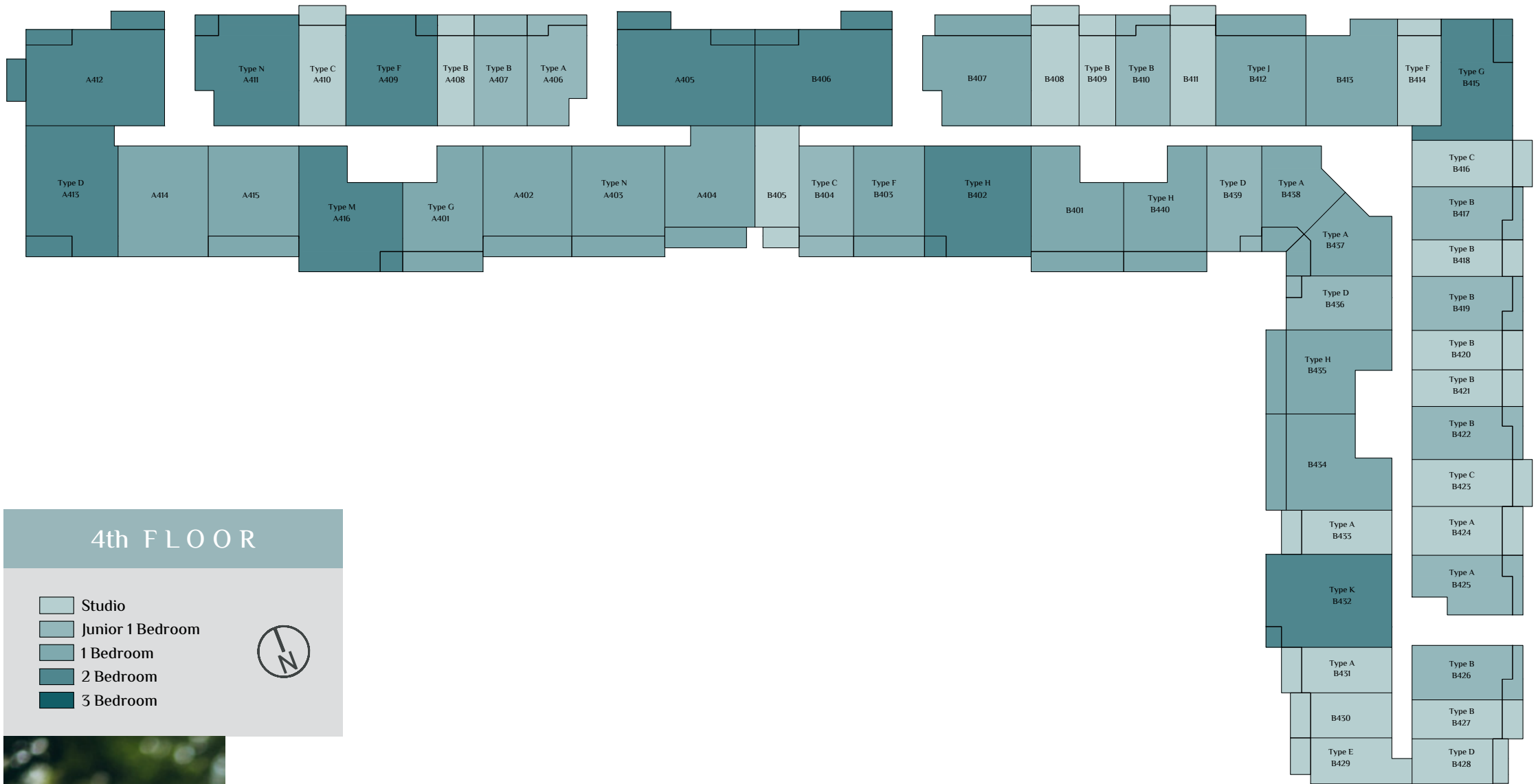




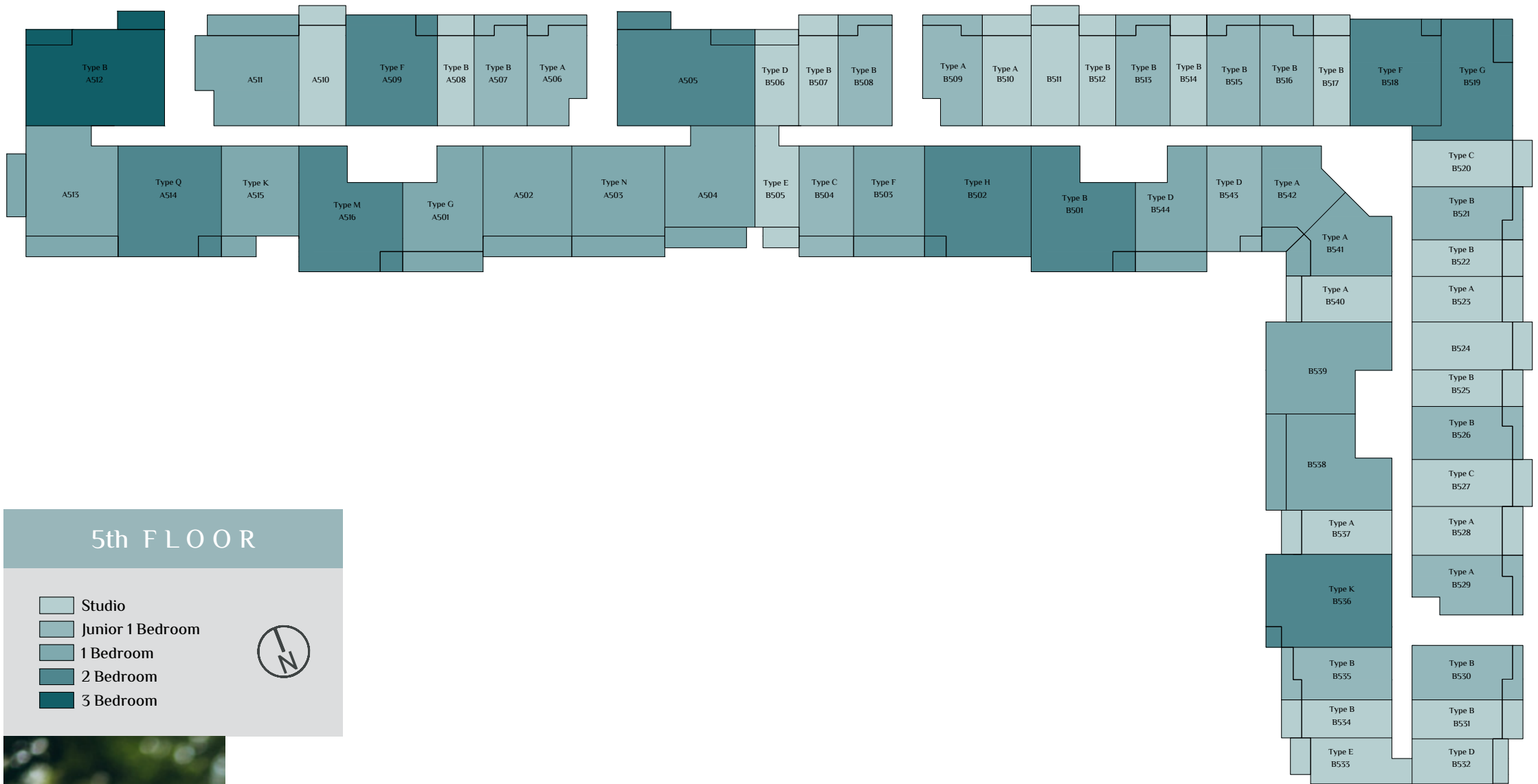


DISCLAIMER "All drawings and dimensions are approximates. Drawings are not to scale and are subjects to change without notice. The developer reserves the right to make revisions. The units are taken from the typical floor of the building and columns may vary in size depending on the floor level. The furnishings and accessories shown are for representation only. The length and width of the unit and balcony varies depending on which floor and which orientation the unit is located within the building to comply with the building authority regulations."

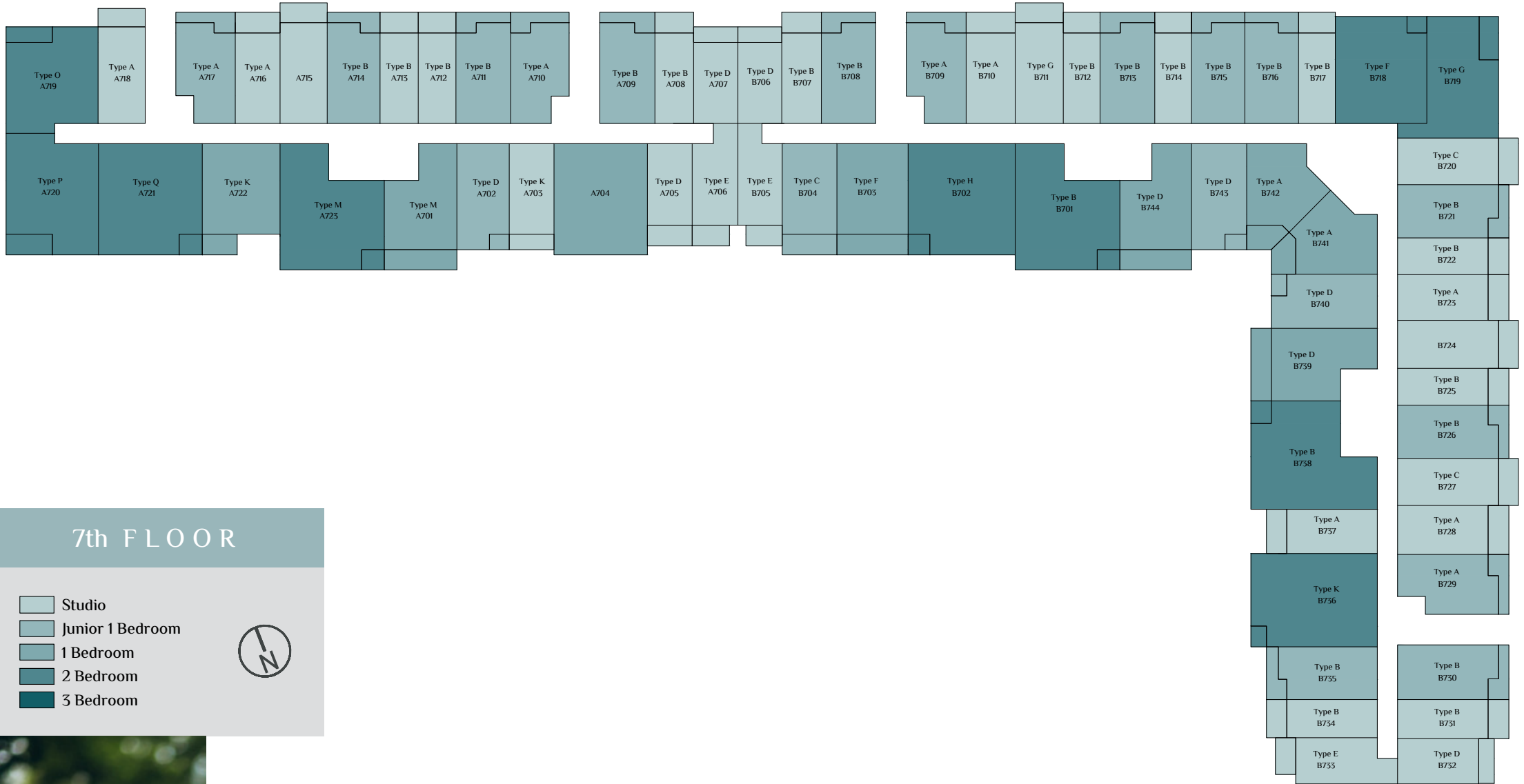


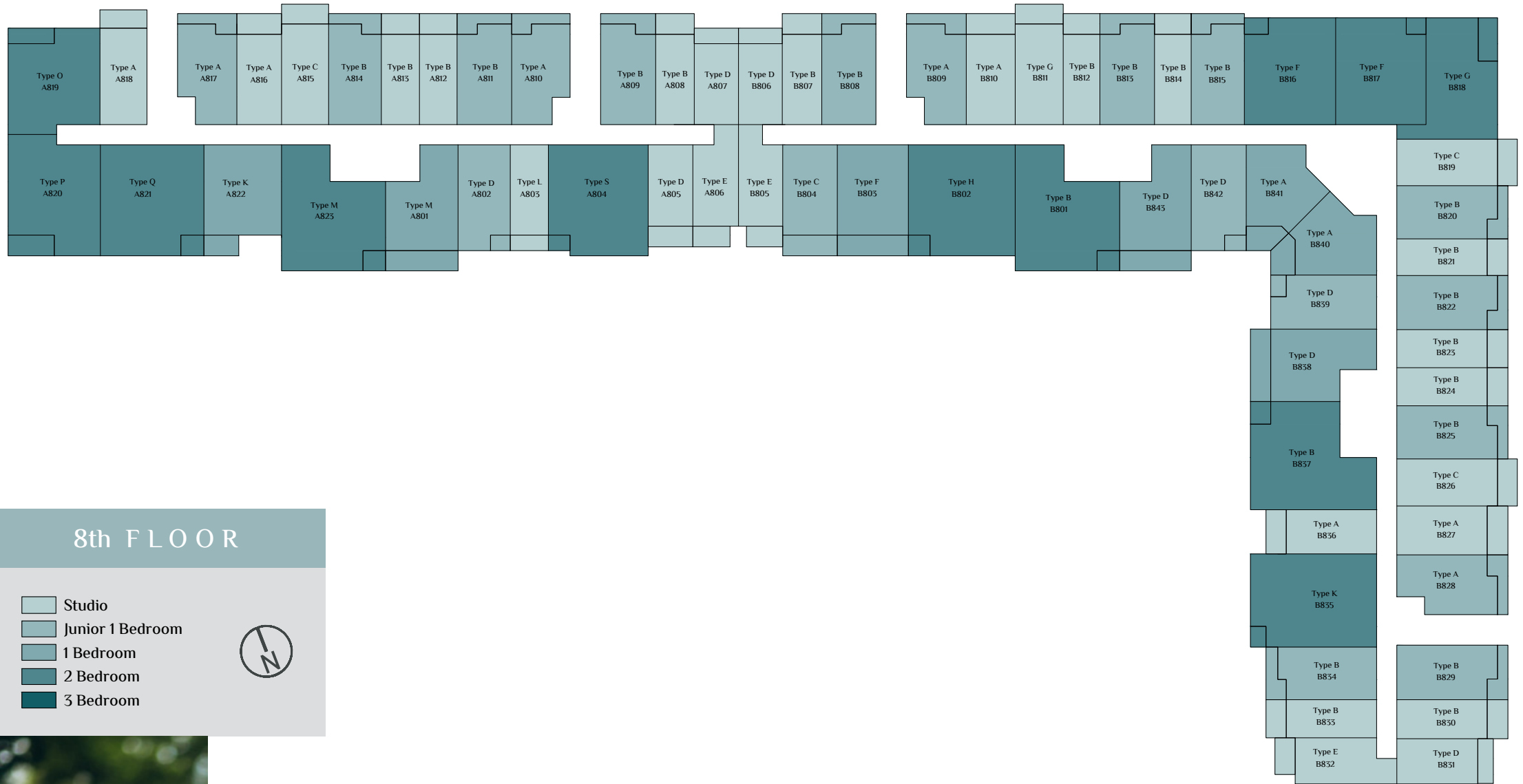


DISCLAIMER "All drawings and dimensions are approximates. Drawings are not to scale and are subjects to change without notice. The developer reserves the right to make revisions. The units are taken from the typical floor of the building and columns may vary in size depending on the floor level. The furnishings and accessories shown are for representation only. The length and width of the unit and balcony varies depending on which floor and which orientation the unit is located within the building to comply with the building authority regulations."







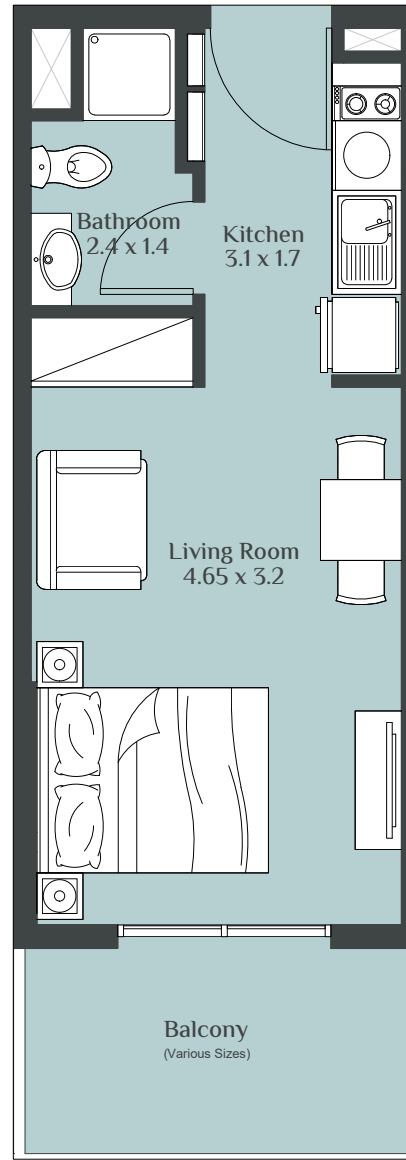


DISCLAIMER "All drawings and dimensions are approximates. Drawings are not to scale and are subjects to change without notice. The developer reserves the right to make revisions. The units are taken from the typical floor of the building and columns may vary in size depending on the floor level. The furnishings and accessories shown are for representation only. The length and width of the unit and balcony varies depending on which floor and which orientation the unit is located within the building to comply with the building authority regulations."

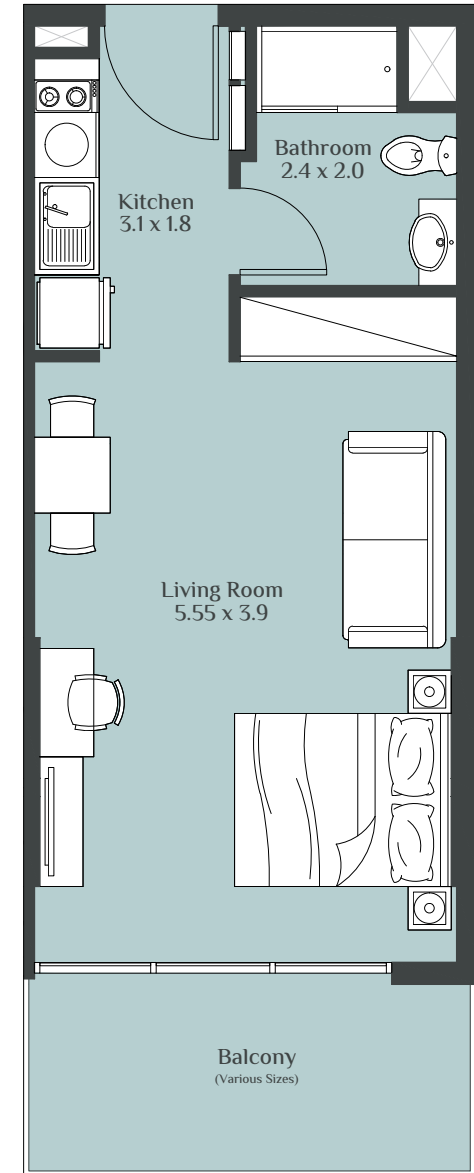
STUDIO TYPE - A



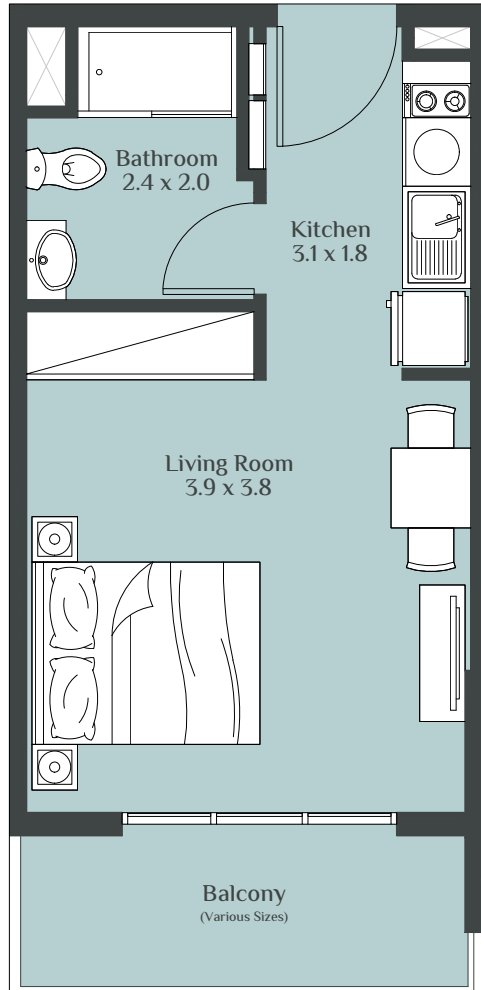
STUDIO TYPE - B



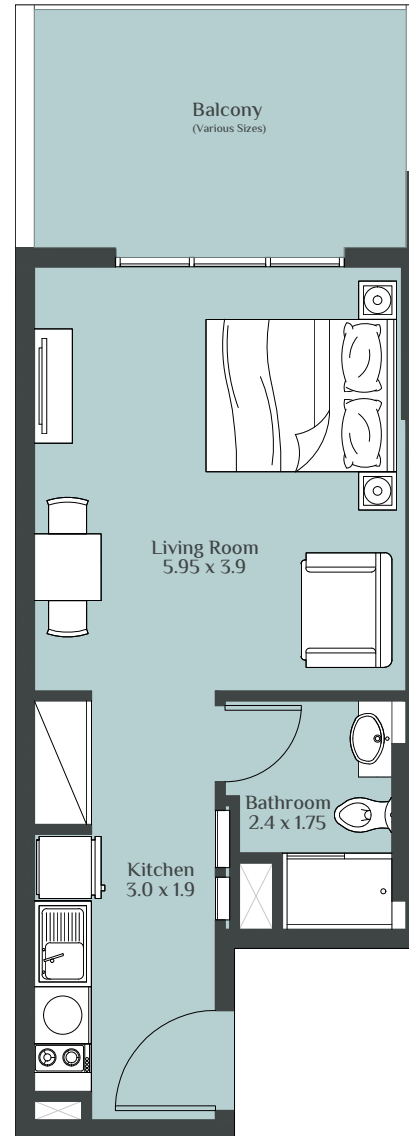
STUDIO TYPE - C



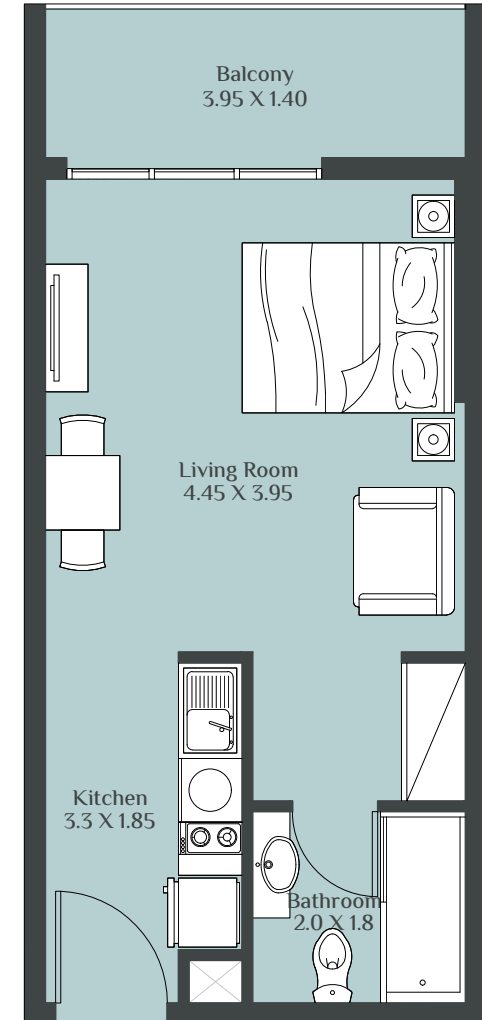
STUDIO TYPE - D



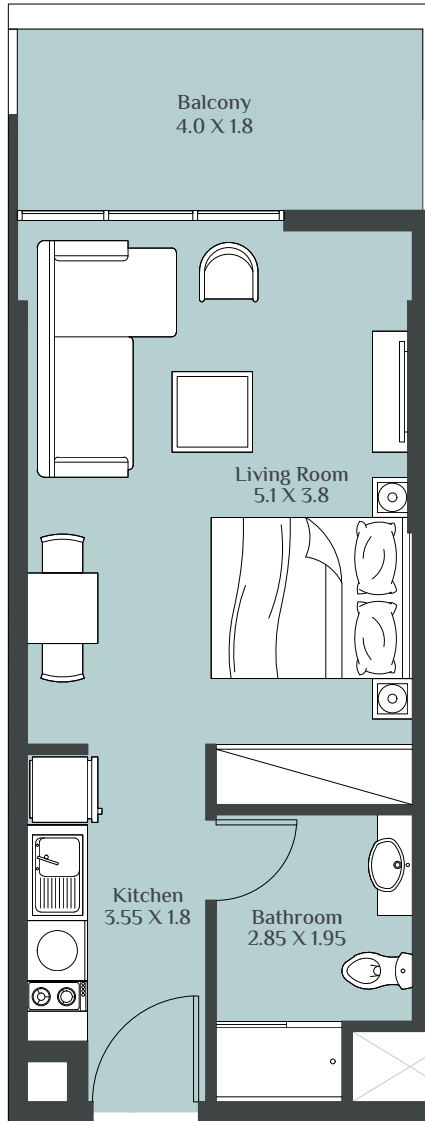
STUDIO TYPE - E



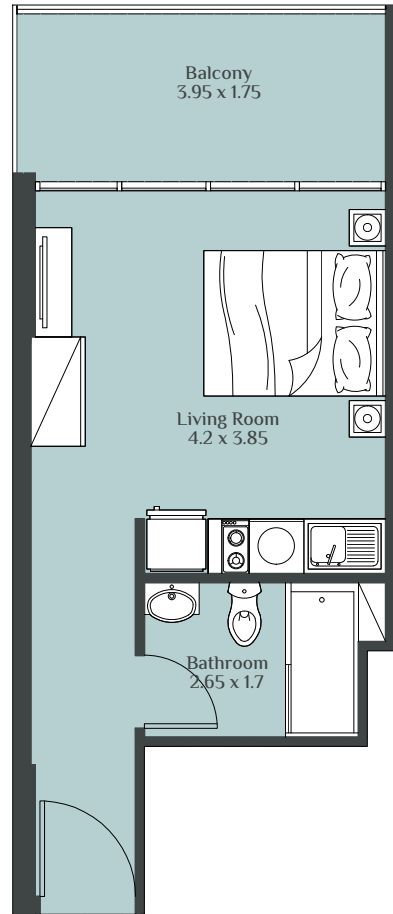
STUDIO TYPE - F



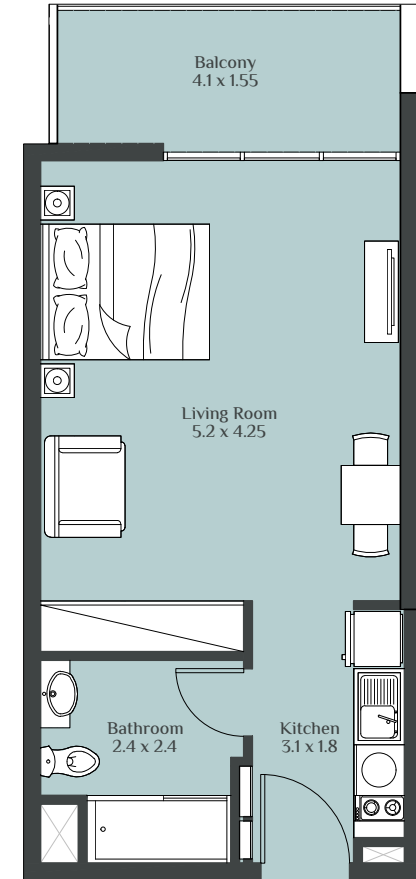
STUDIO TYPE - G



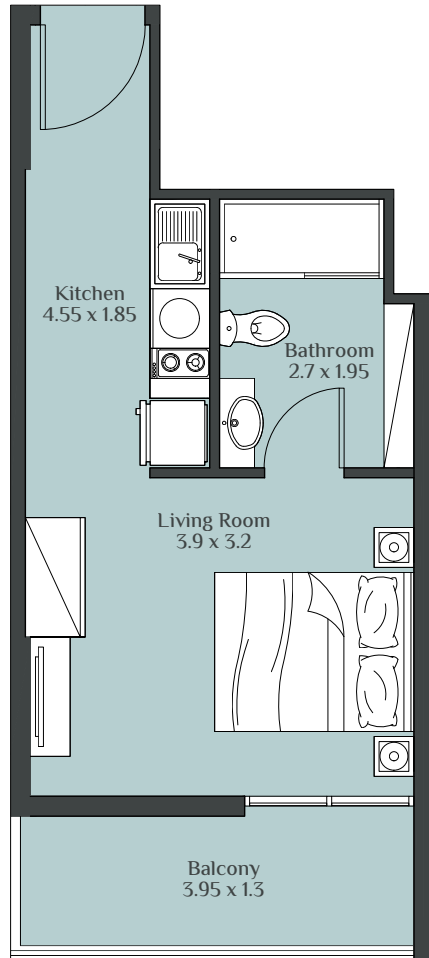
STUDIO TYPE - H



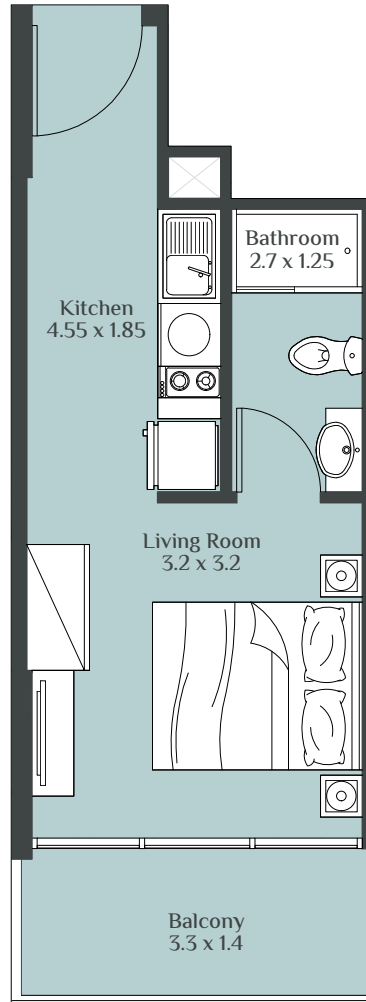
STUDIO TYPE - J



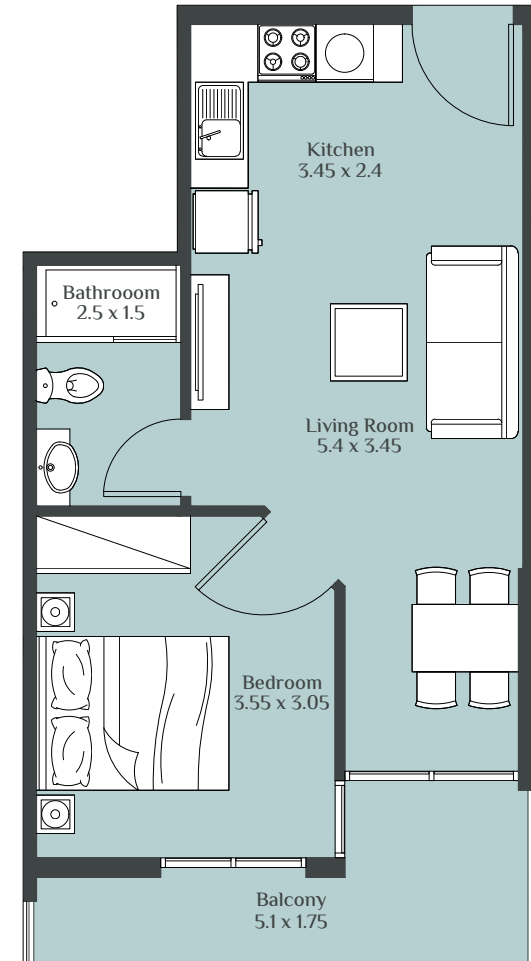
STUDIO TYPE - K



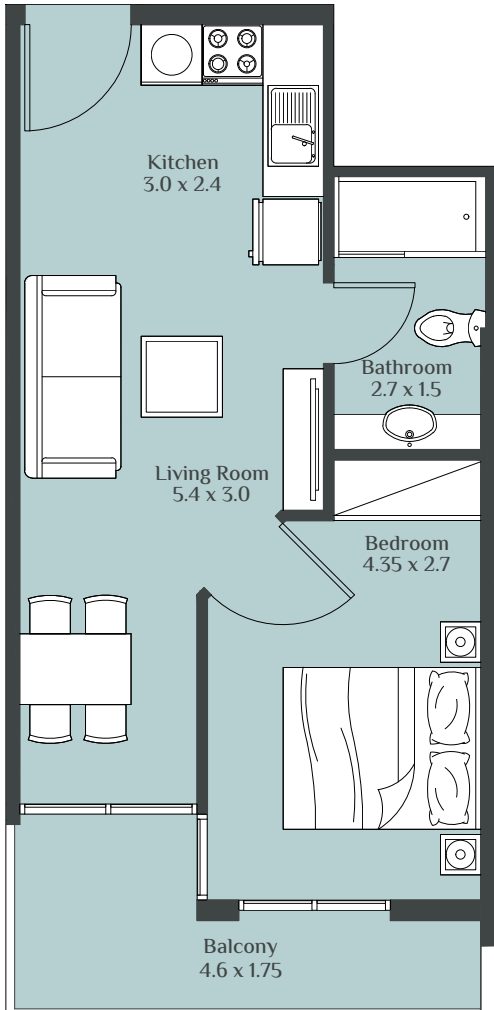
STUDIO TYPE - L



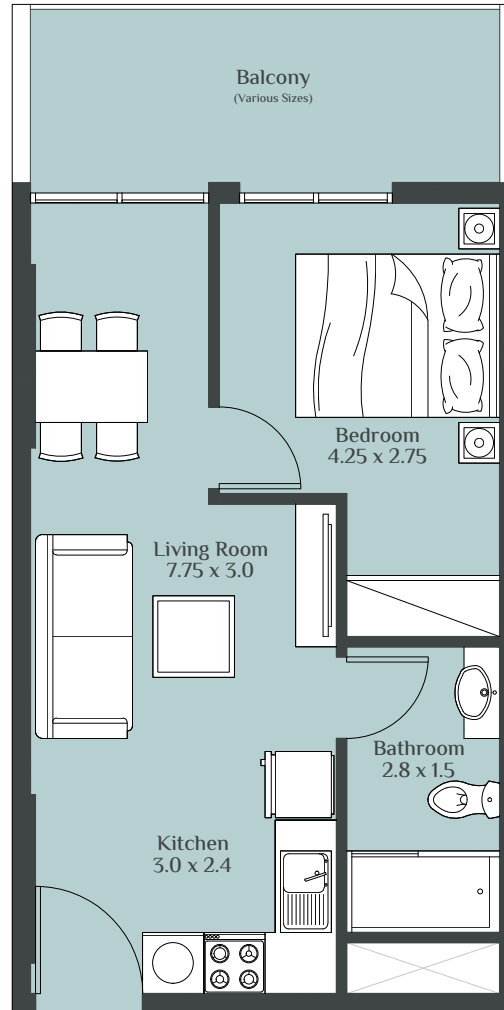
JUNIOR 1 BEDROOM TYPE - A



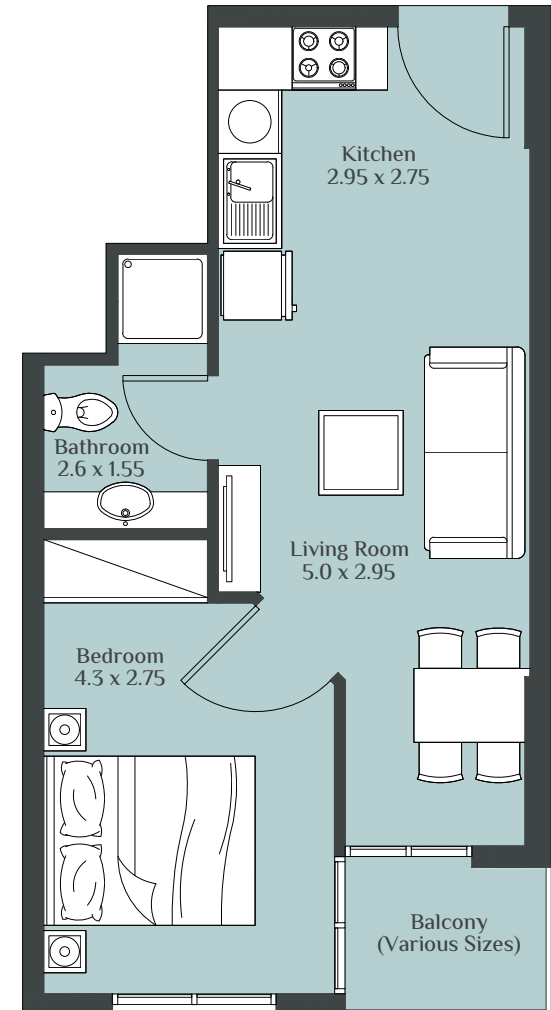
JUNIOR 1 BEDROOM TYPE - B



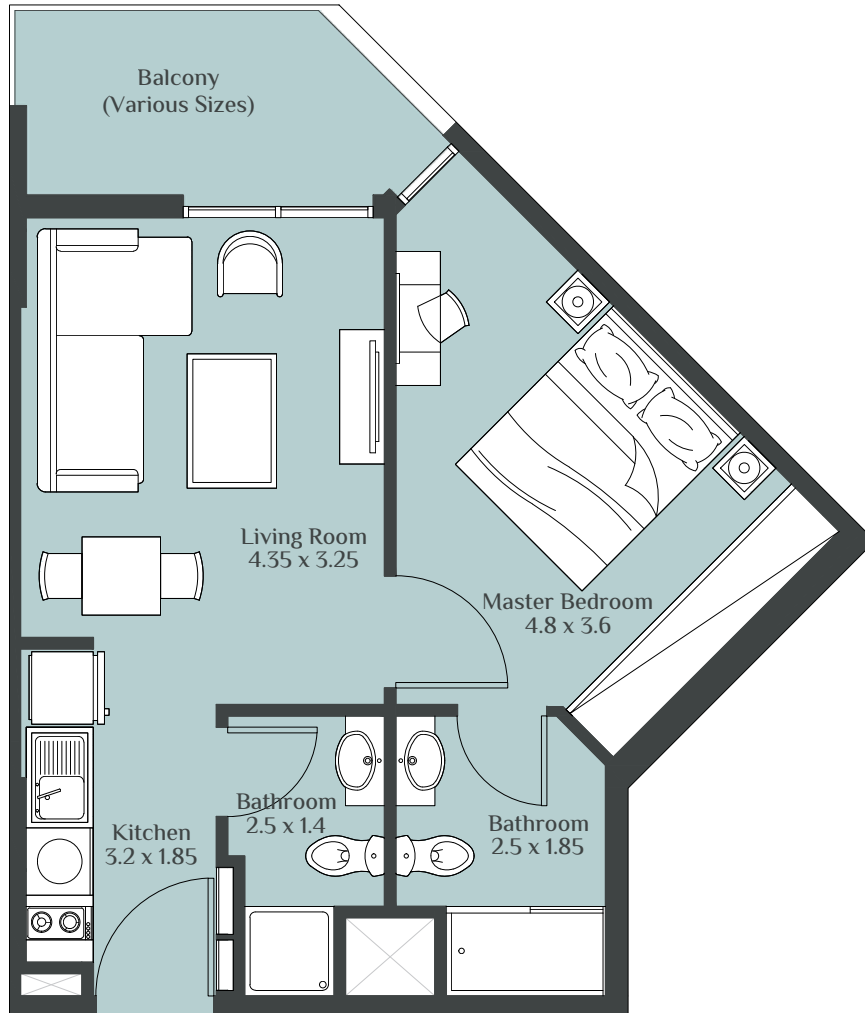
JUNIOR 1 BEDROOM TYPE - C



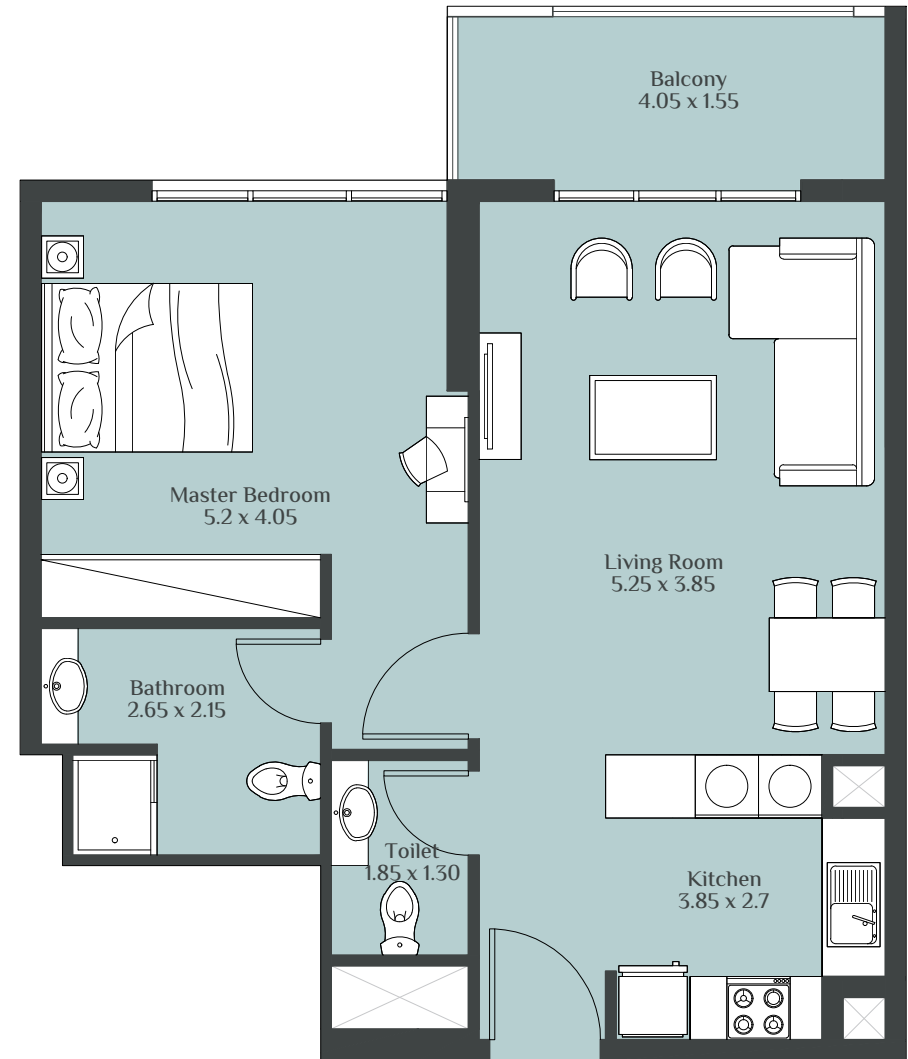
JUNIOR 1 BEDROOM TYPE - D



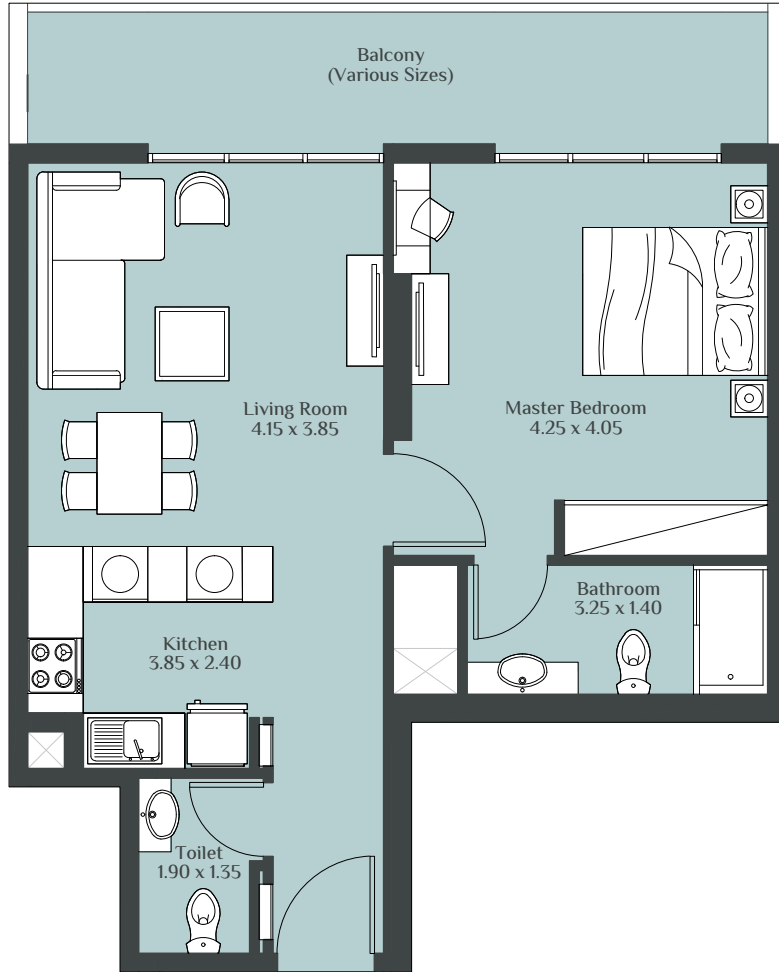
1 BEDROOM TYPE - A



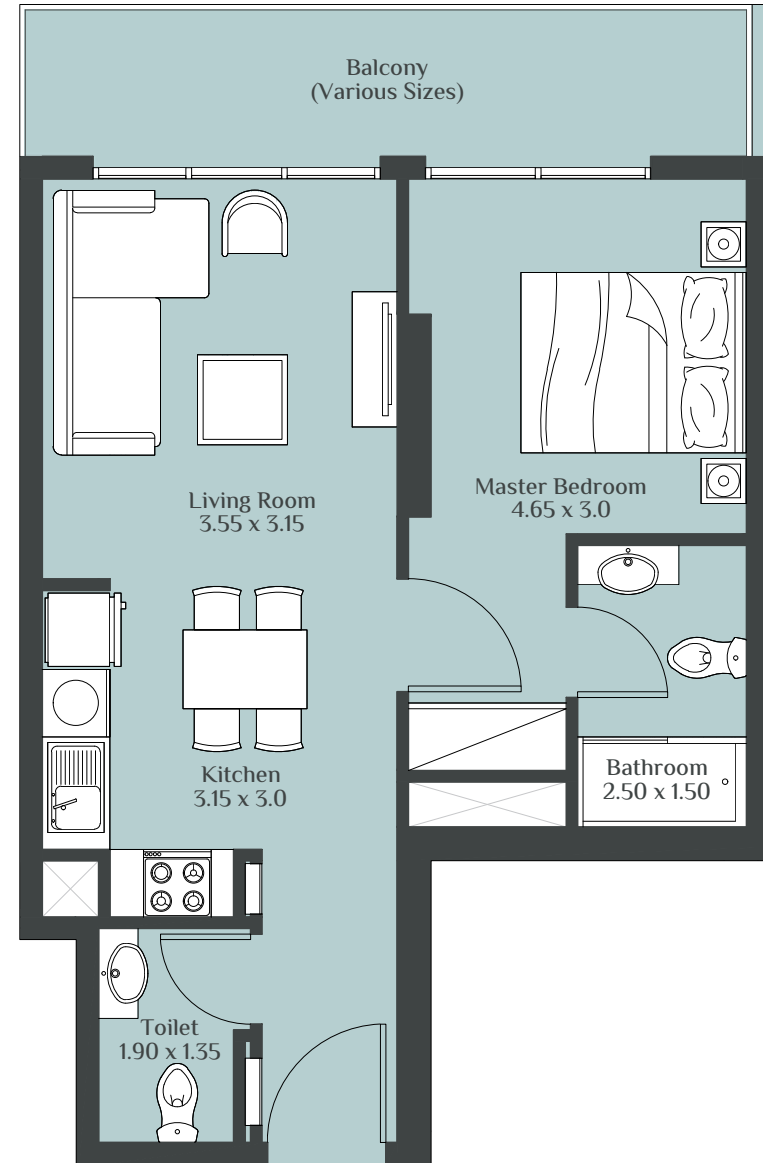
1 BEDROOM TYPE - B



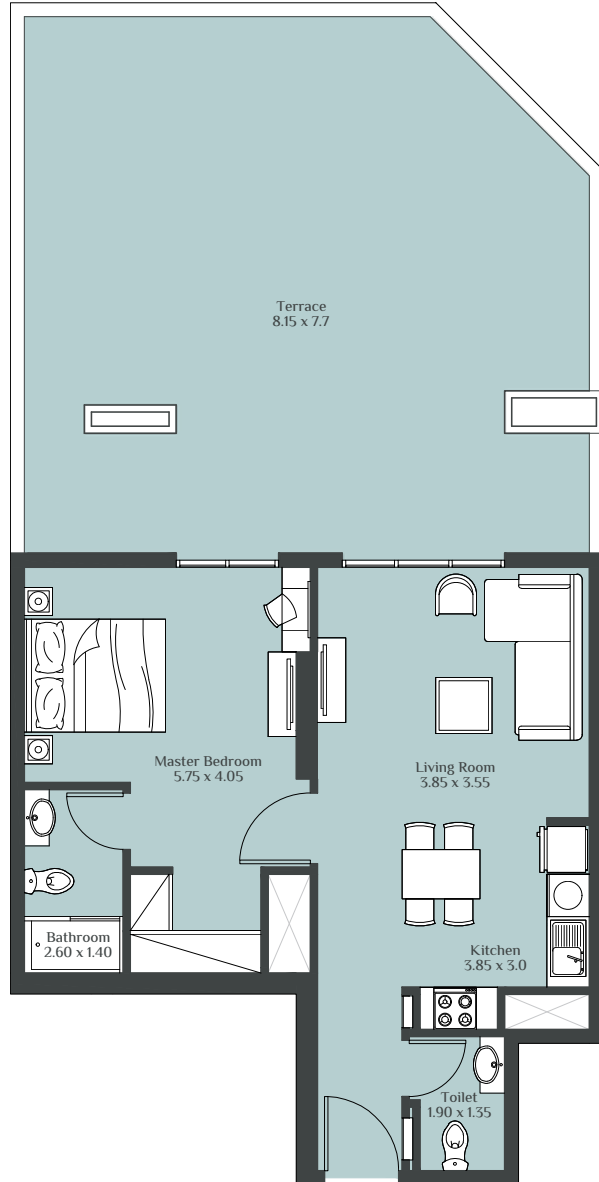
1 BEDROOM TYPE - C



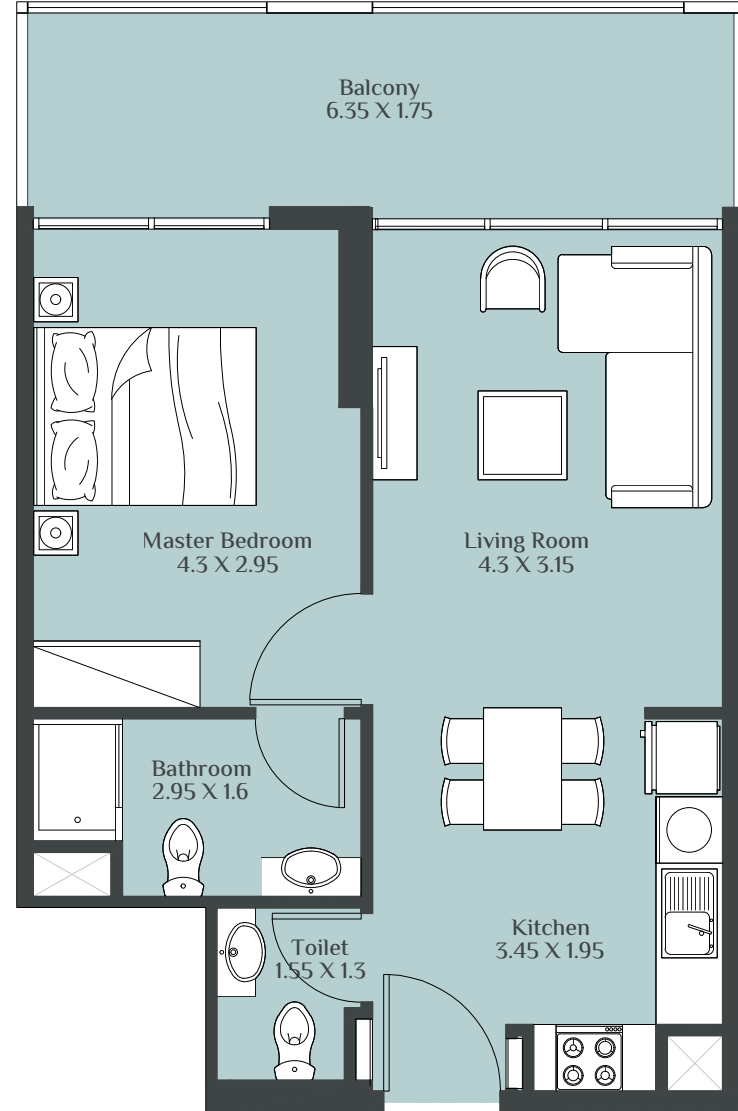
1 BEDROOM TYPE - D



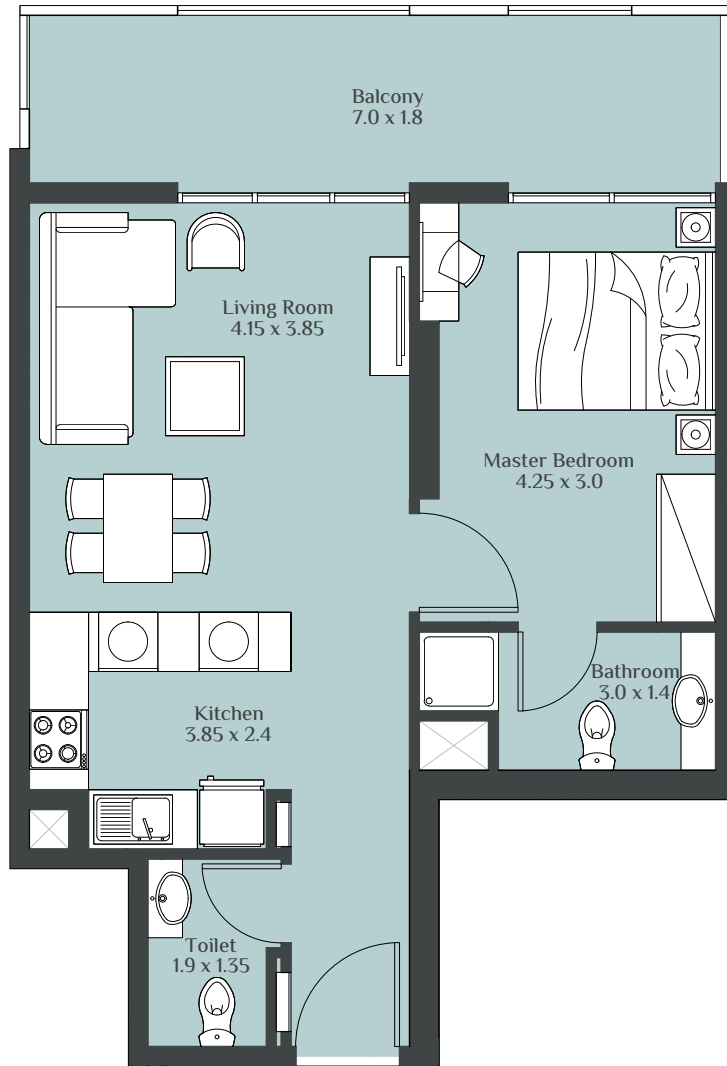
1 BEDROOM TYPE - E



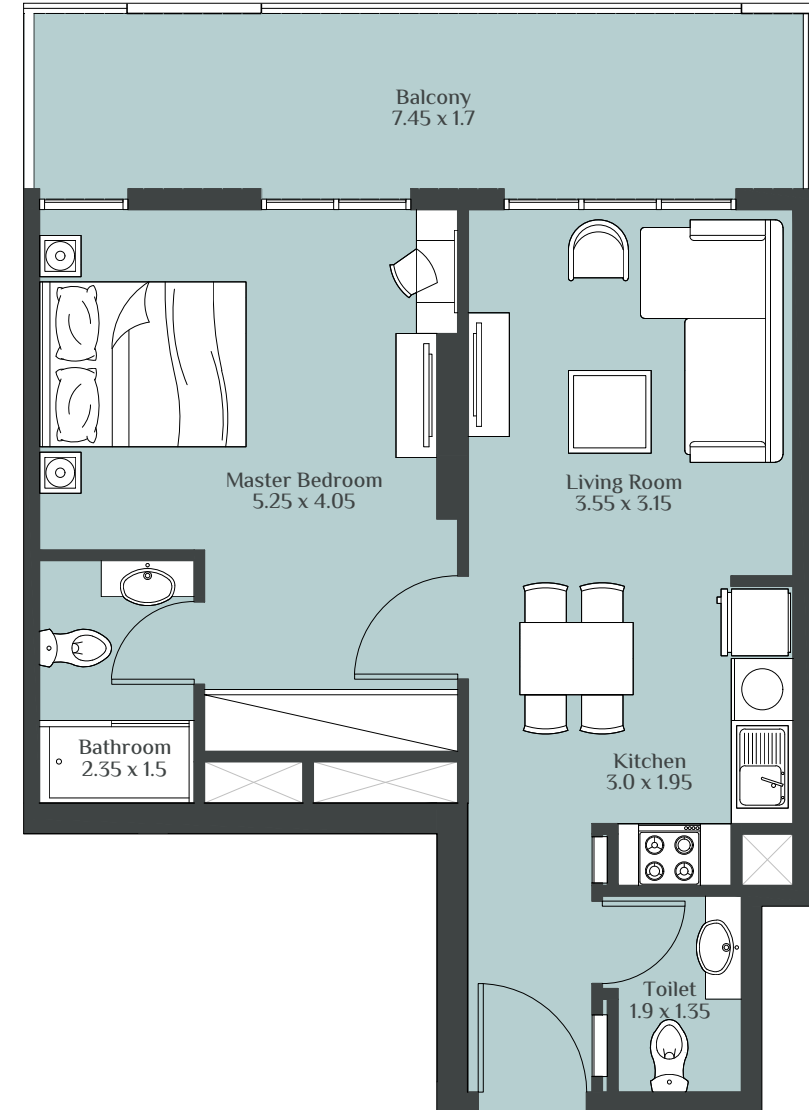
1 BEDROOM TYPE - F



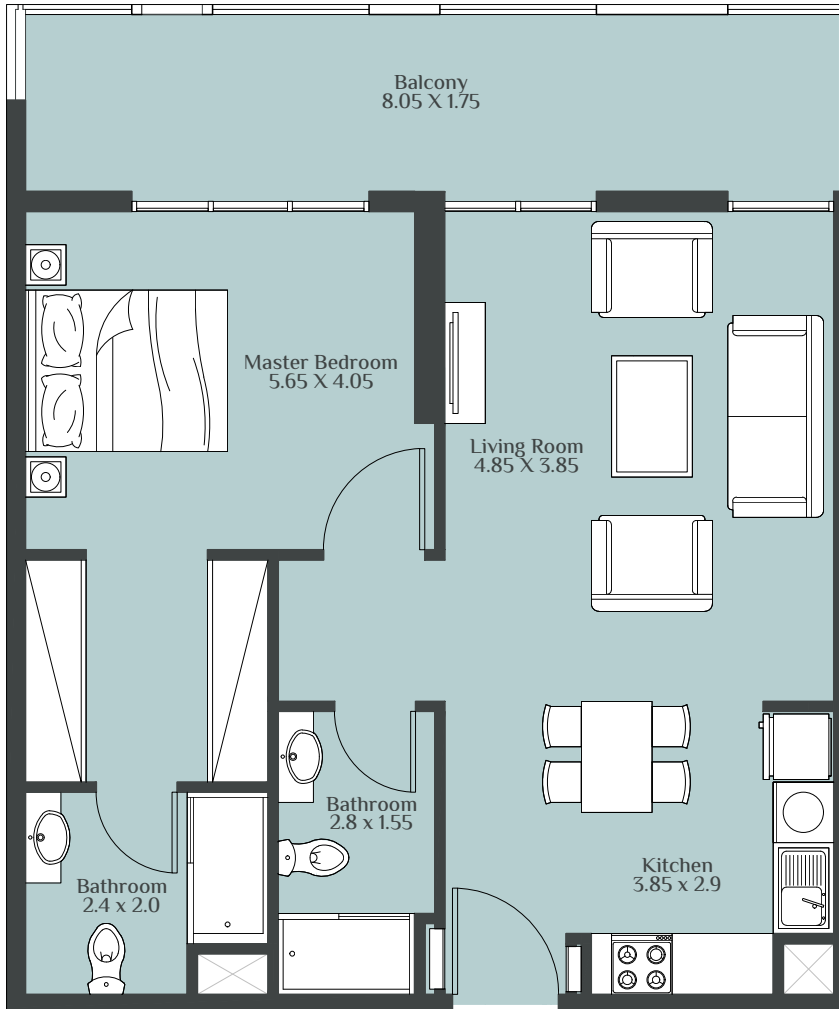
1 BEDROOM TYPE - G



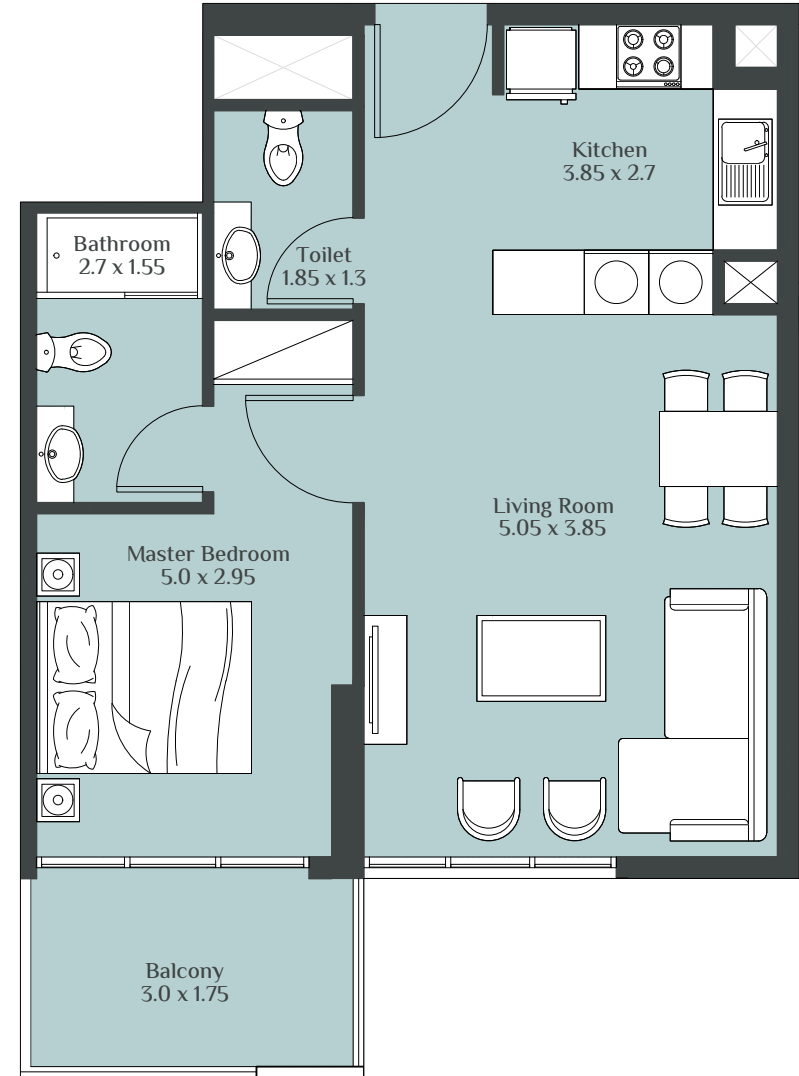
1 BEDROOM TYPE - H



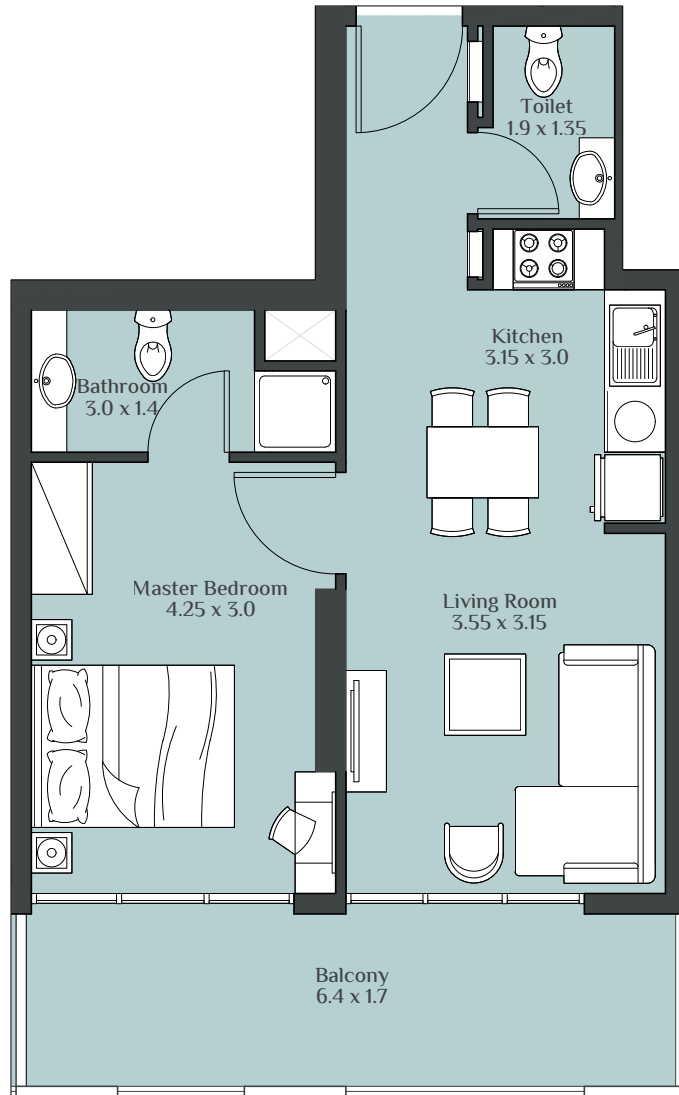
1 BEDROOM TYPE - J



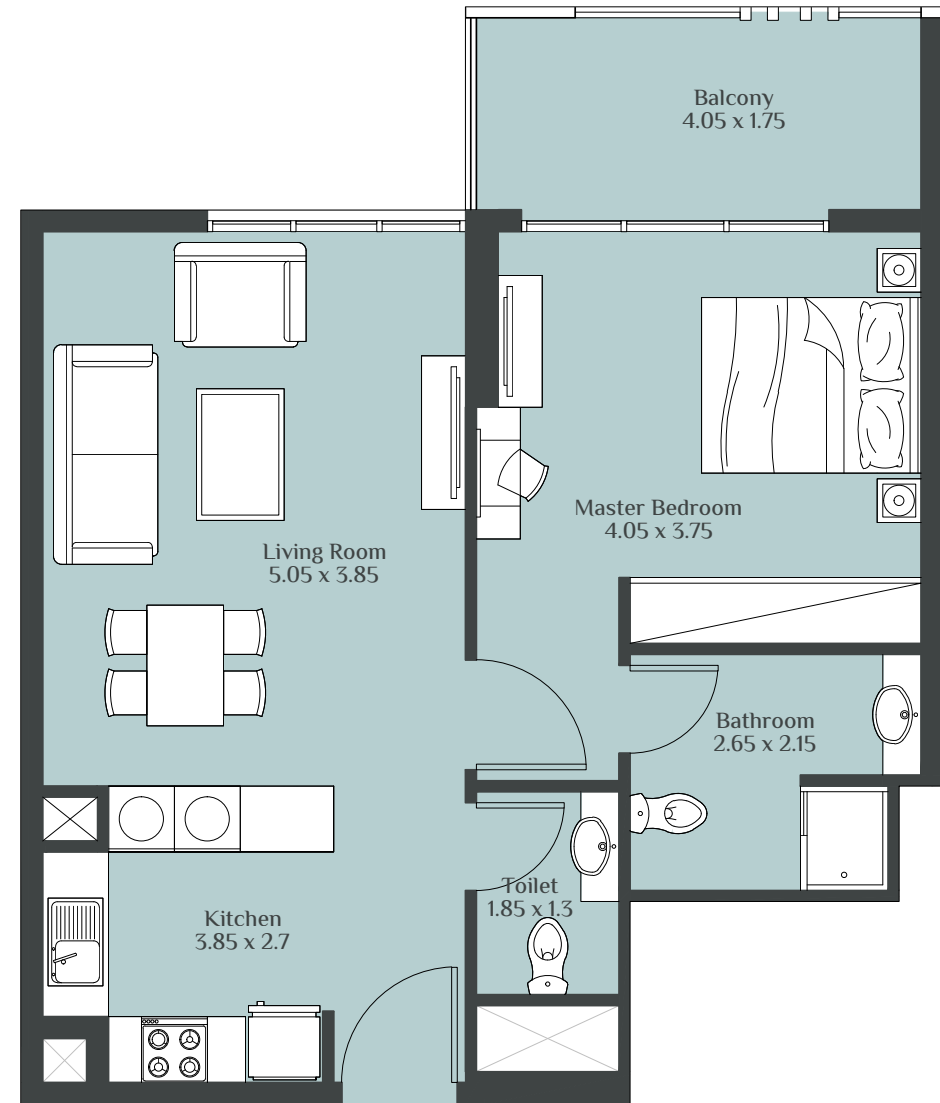
1 BEDROOM TYPE - K



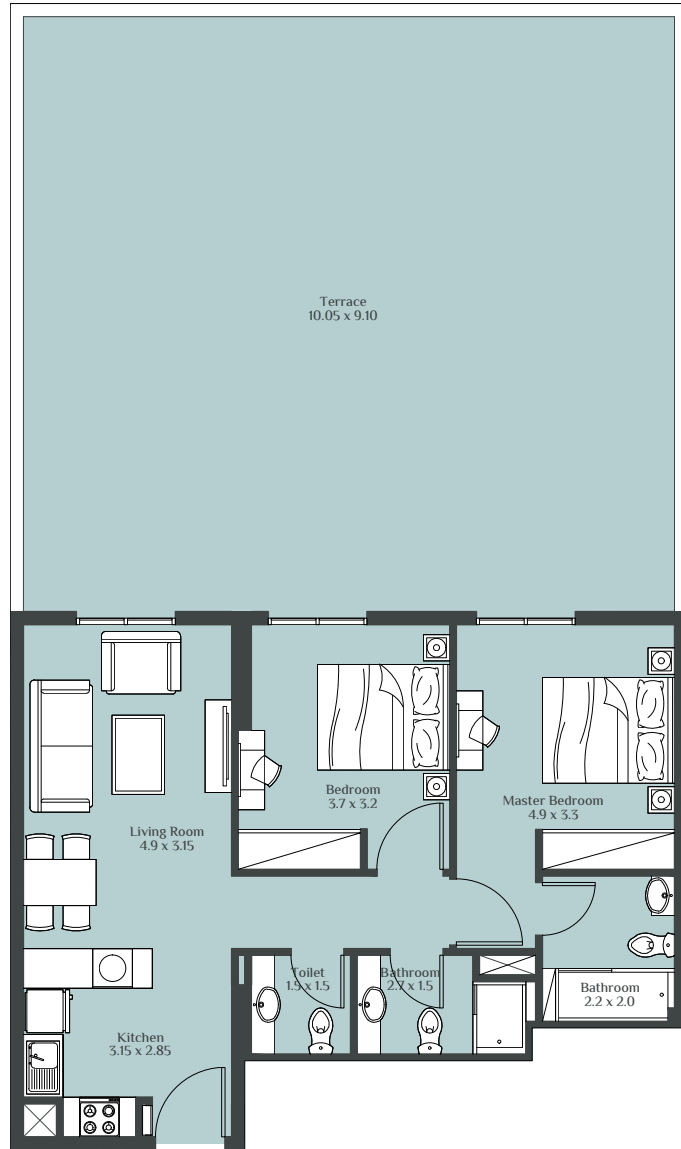
1 BEDROOM TYPE - M



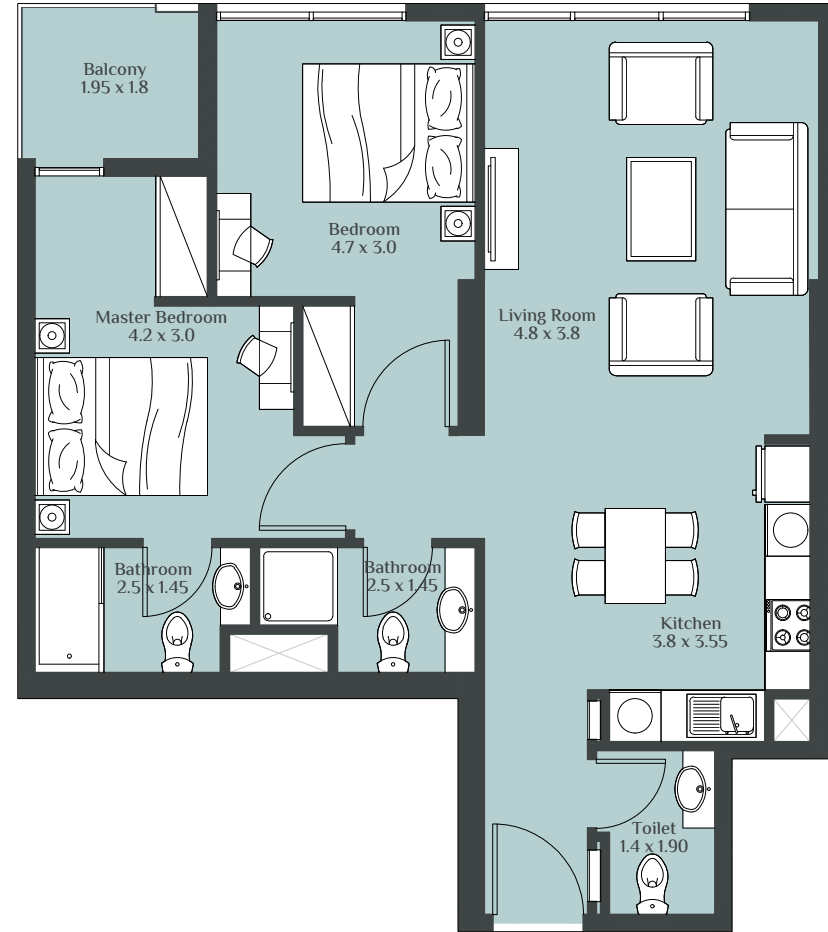
1 BEDROOM TYPE - N



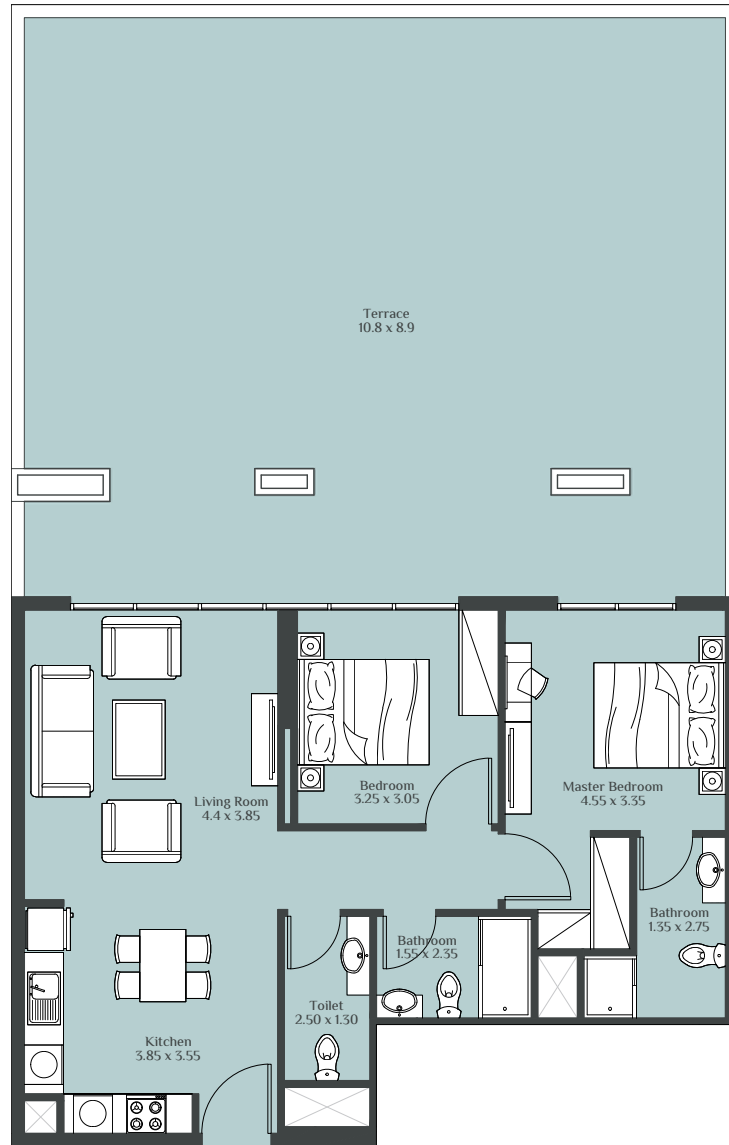
2 BEDROOM TYPE - A



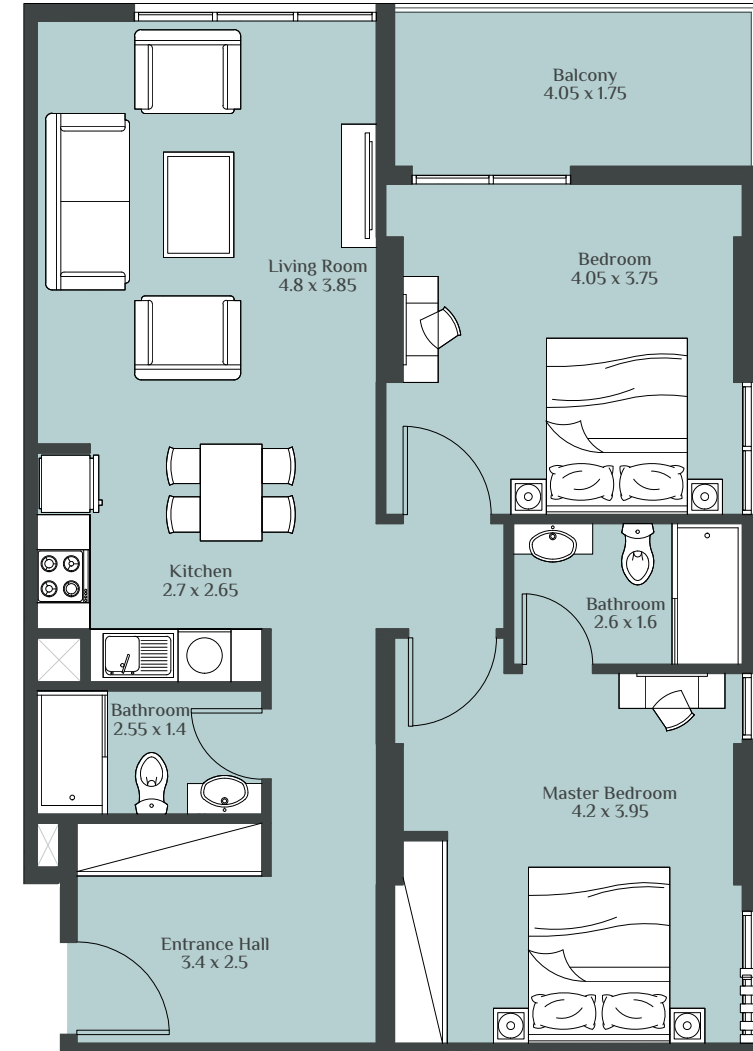
2 BEDROOM TYPE - B



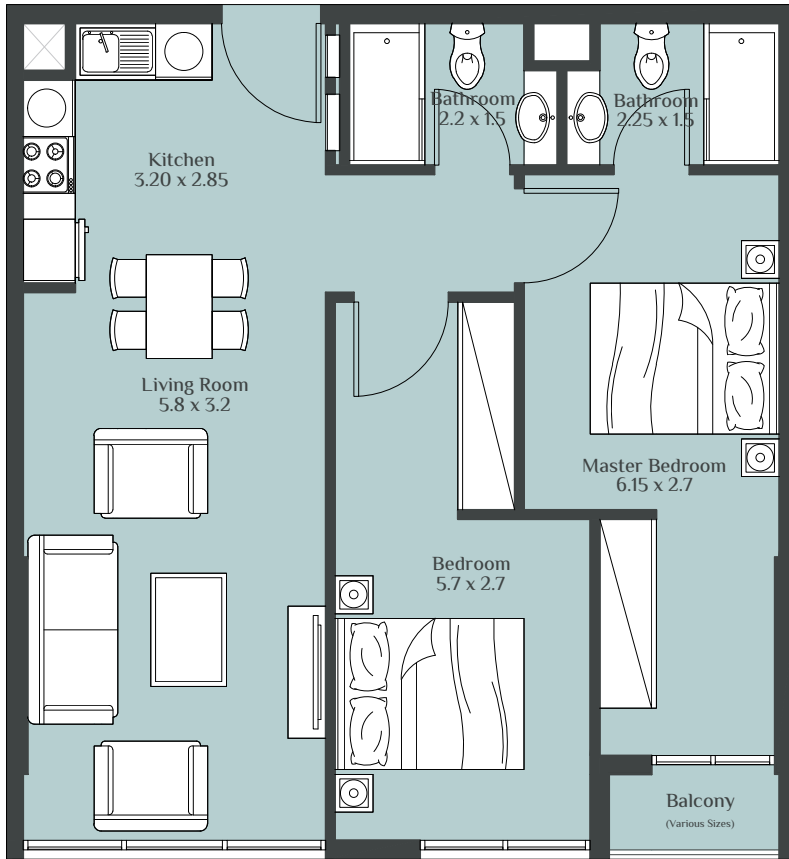
2 BEDROOM TYPE - C



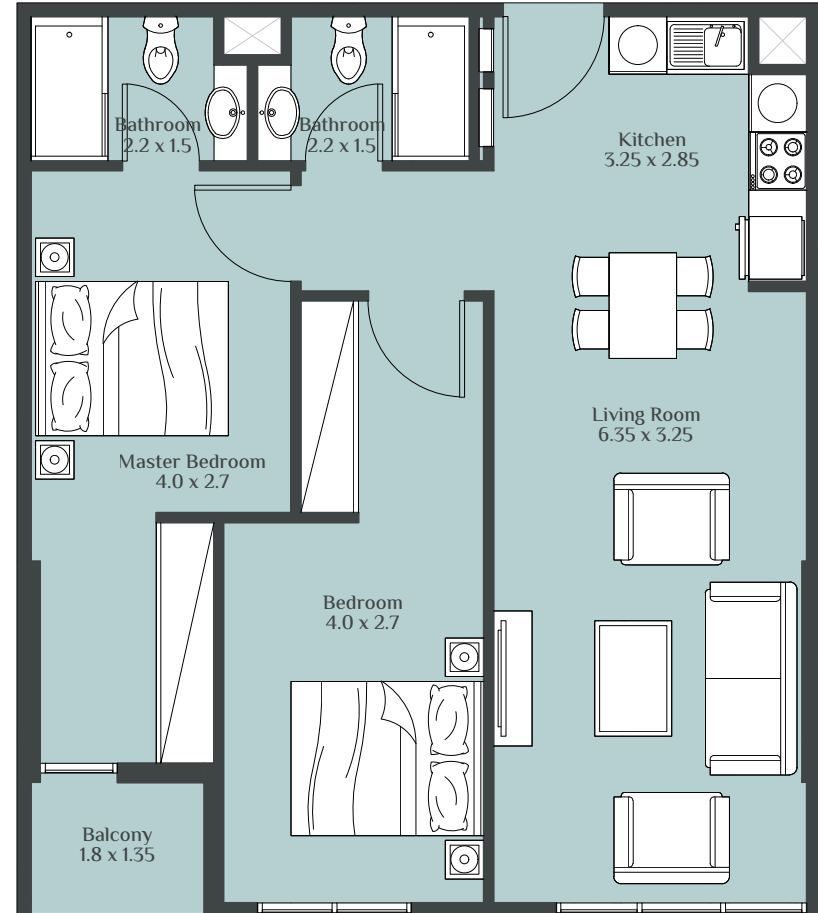
2 BEDROOM TYPE - D



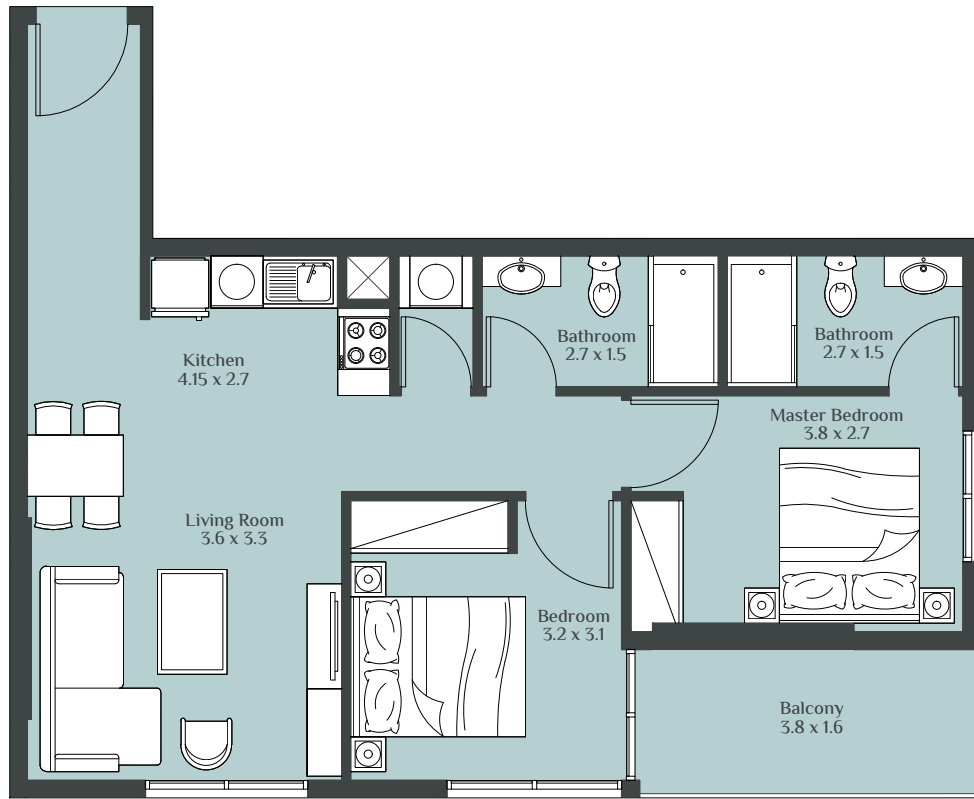
2 BEDROOM TYPE - E



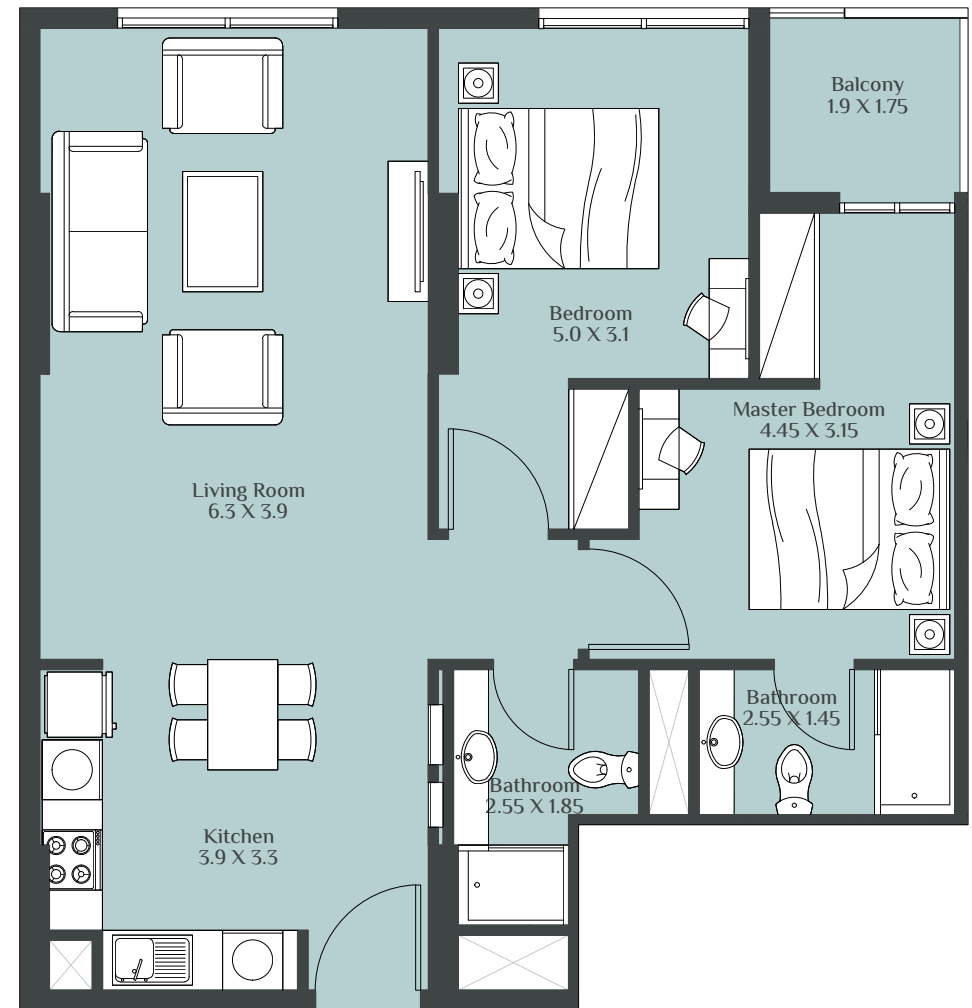
2 BEDROOM TYPE - F



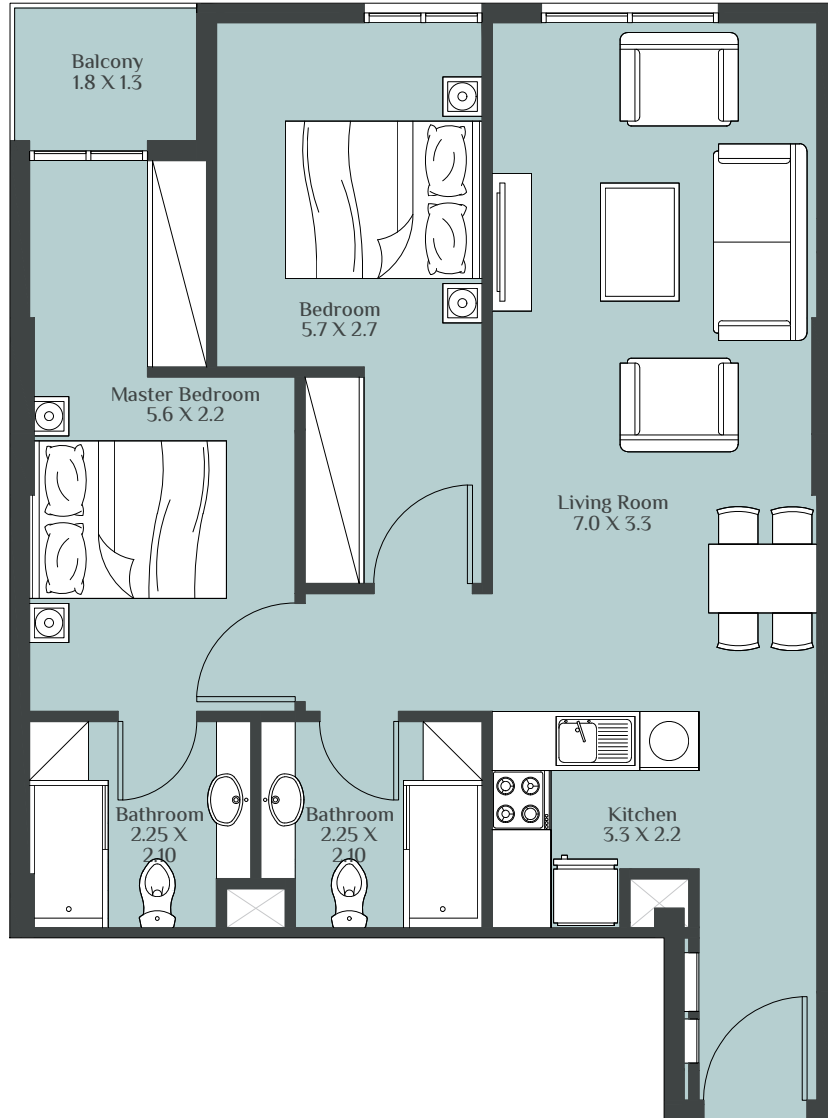
2 BEDROOM TYPE - G



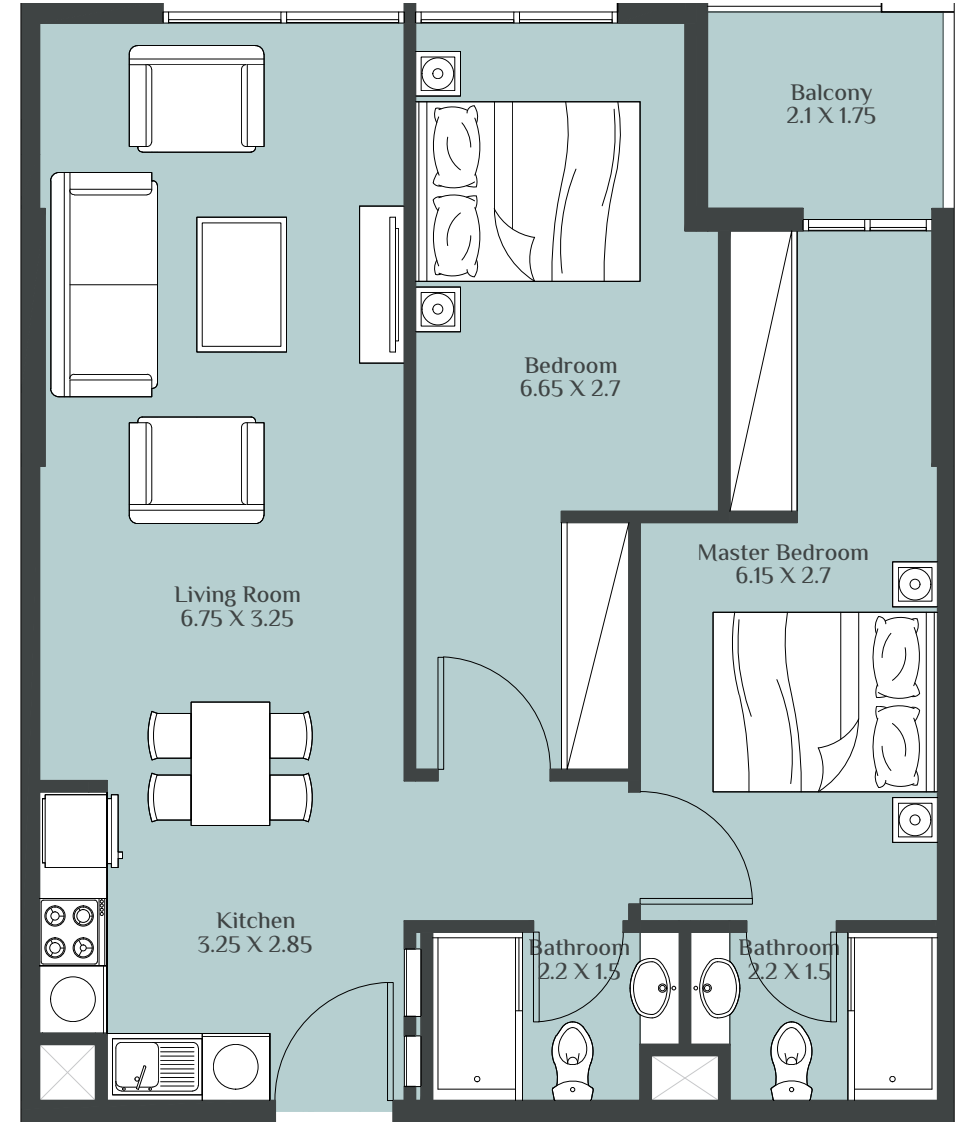
2 BEDROOM TYPE - H



2 BEDROOM TYPE - K

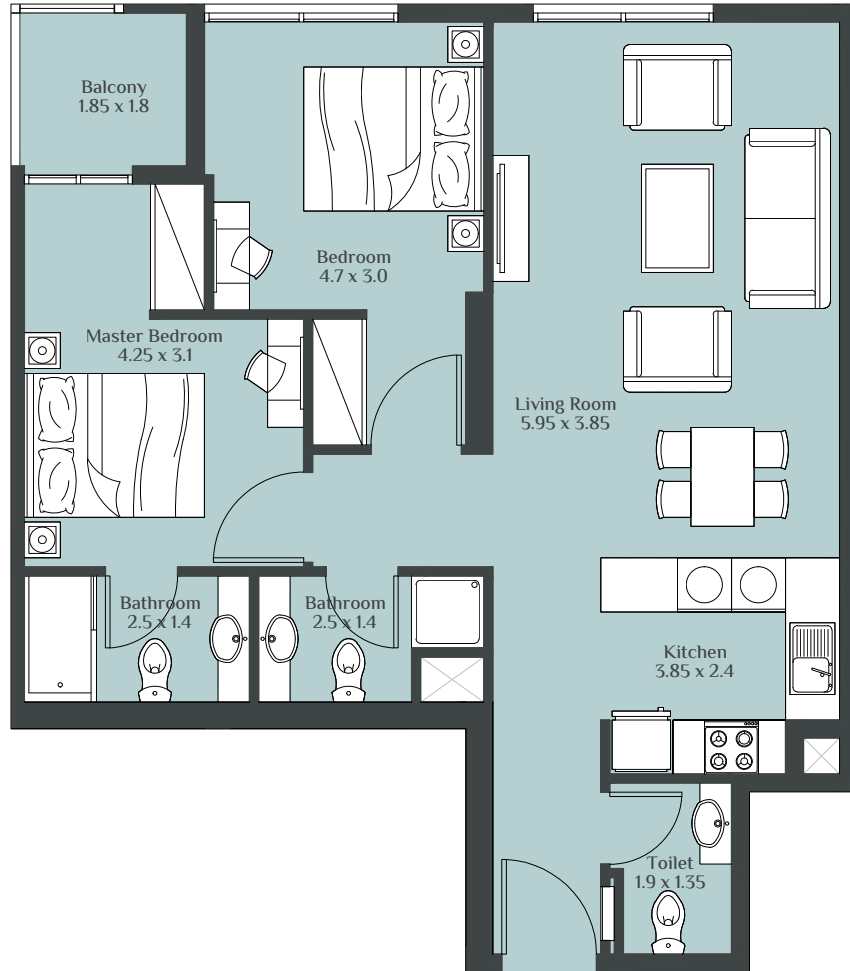


2 BEDROOM TYPE - L

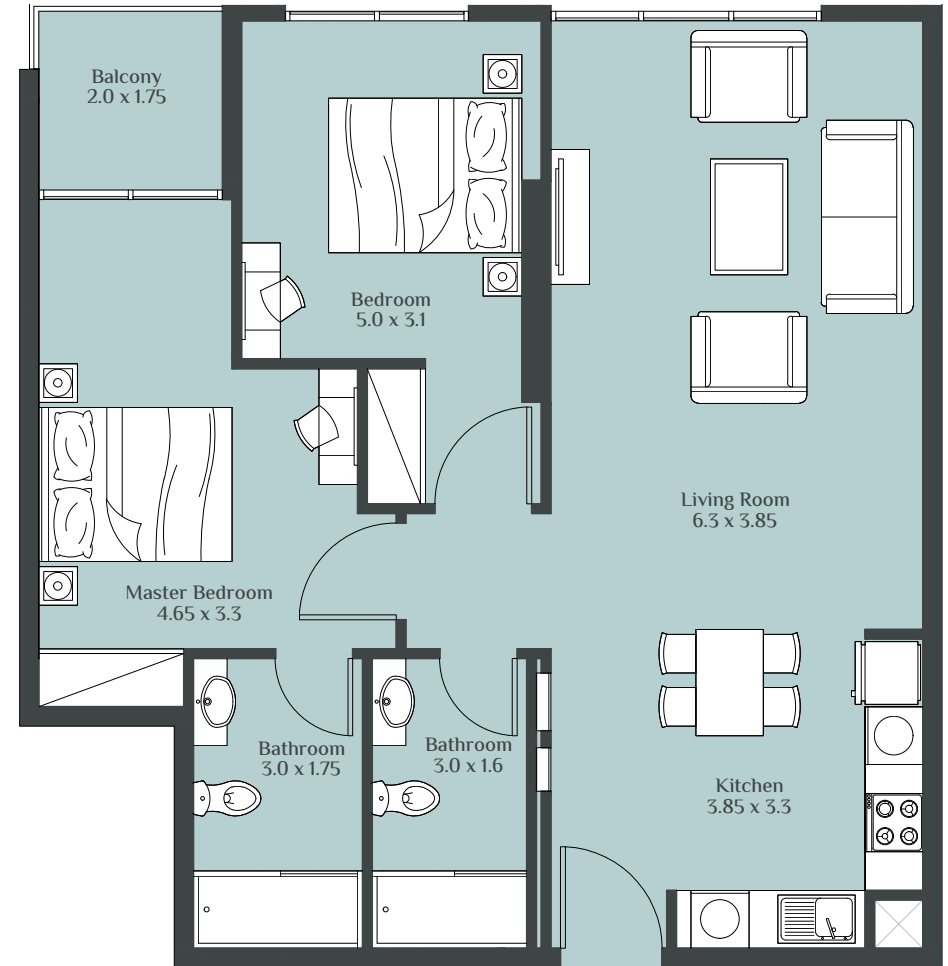


DISCLAIMER "All drawings and dimensions are approximates. Drawings are not to scale and are subjects to change without notice. The developer reserves the right to make revisions. The units are taken from the typical floor of the building and columns may vary in size depending on the floor level. The furnishings and accessories shown are for representation only. The length and width of the unit and balcony varies depending on which floor and which orientation the unit is located within the building to comply with the building authority regulations."

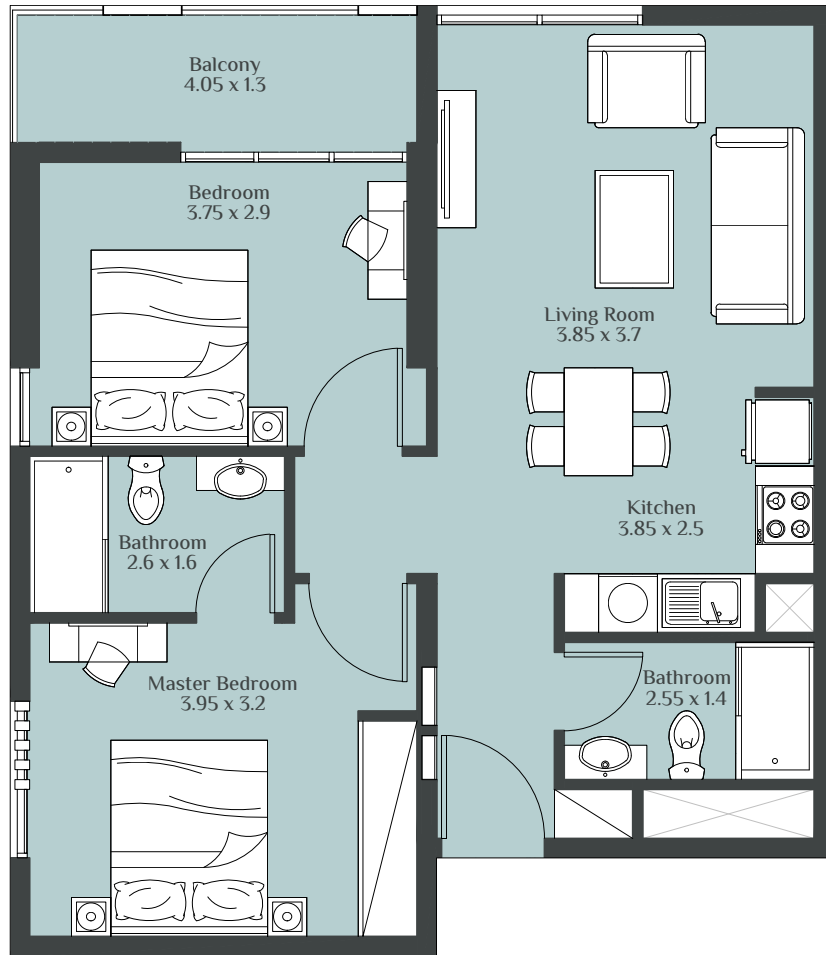
2 BEDROOM TYPE - M



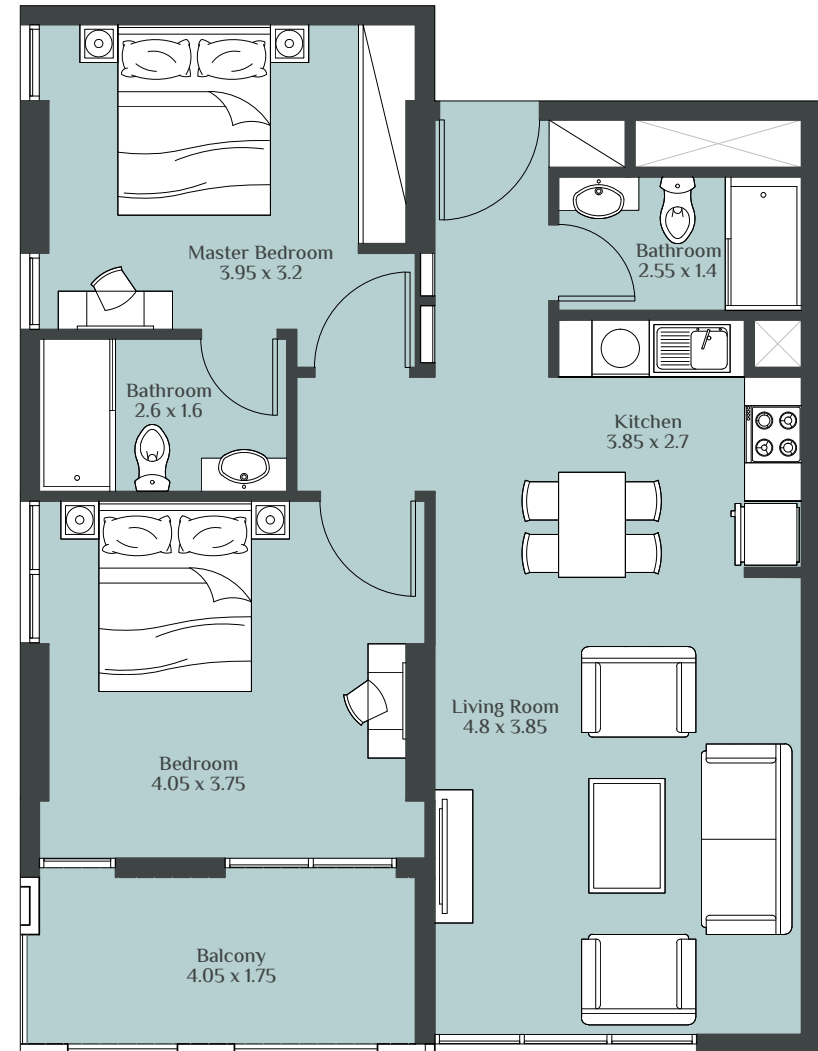
2 BEDROOM TYPE - N



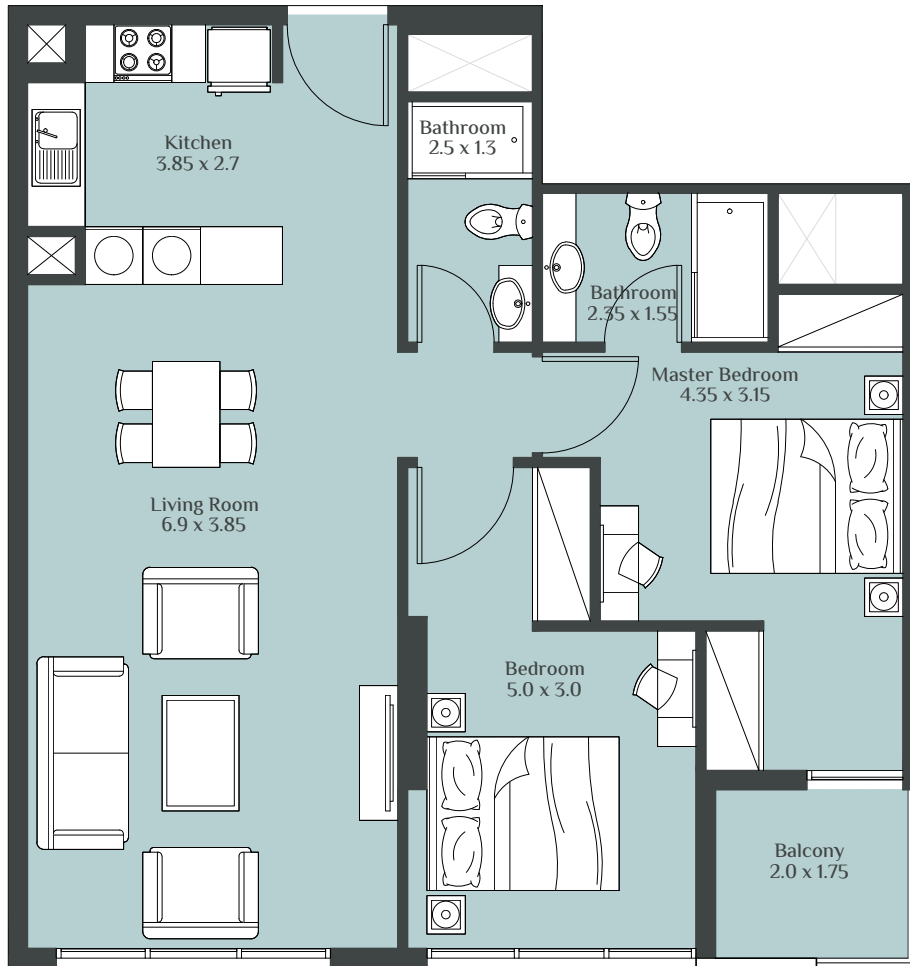
2 BEDROOM TYPE - O



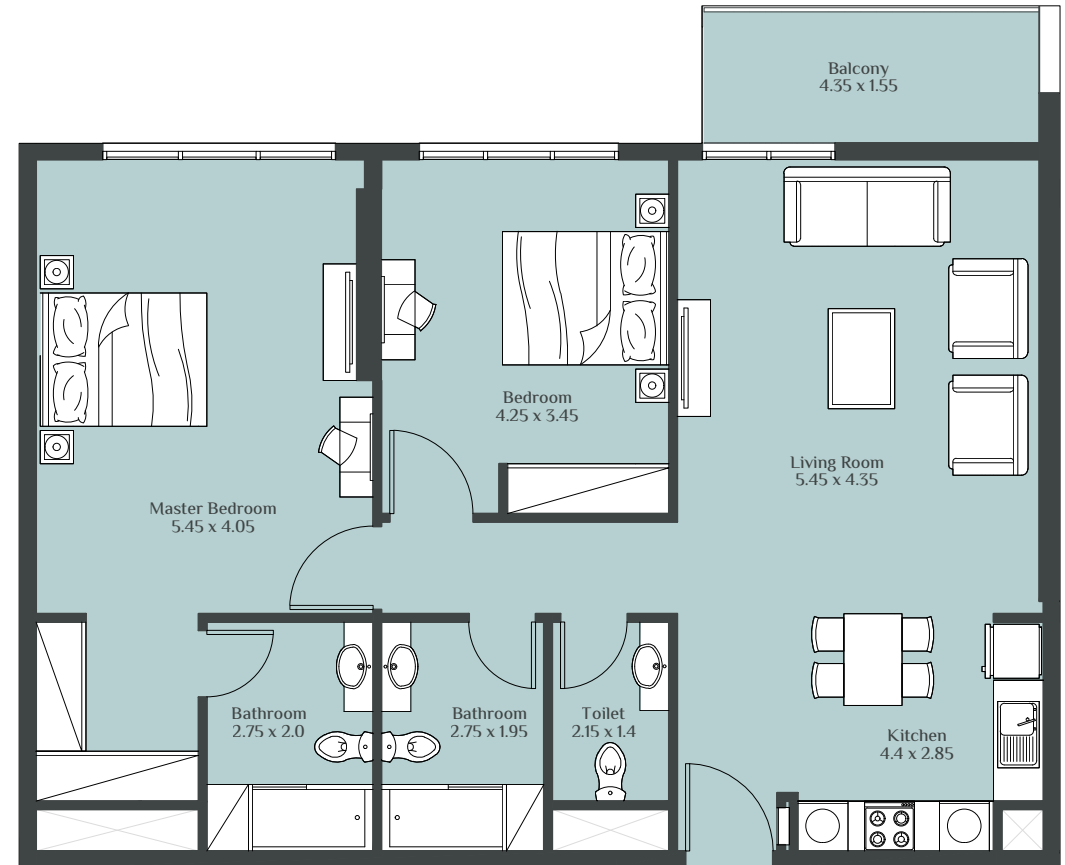
2 BEDROOM TYPE - P



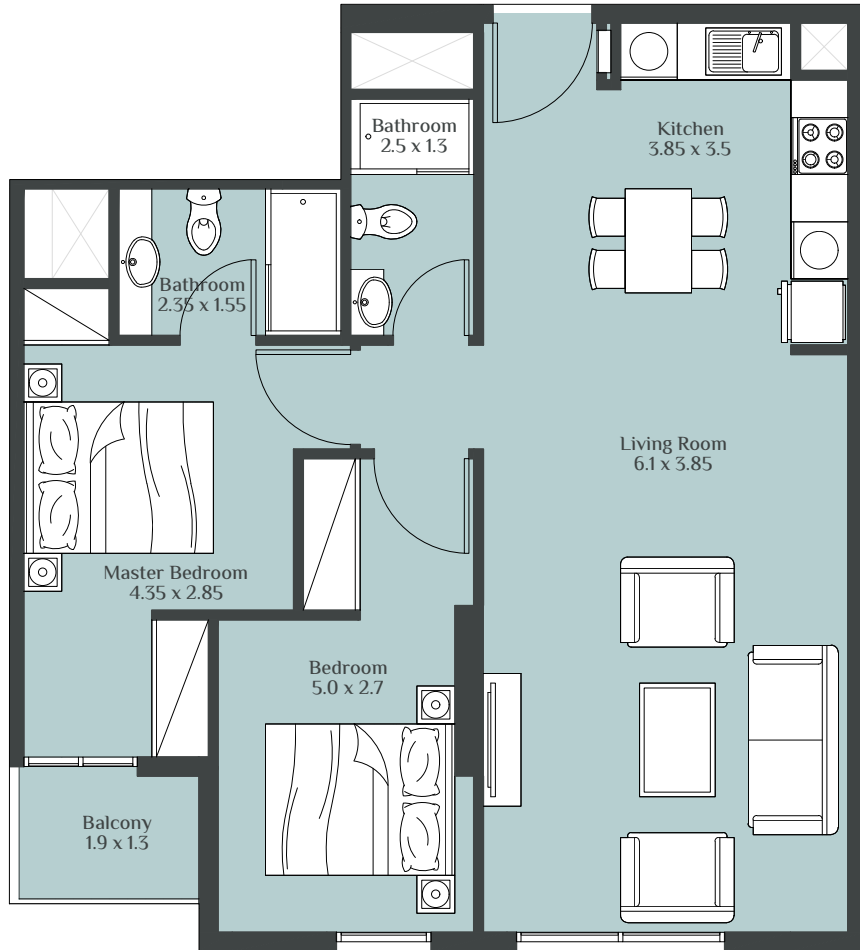
2 BEDROOM TYPE - Q



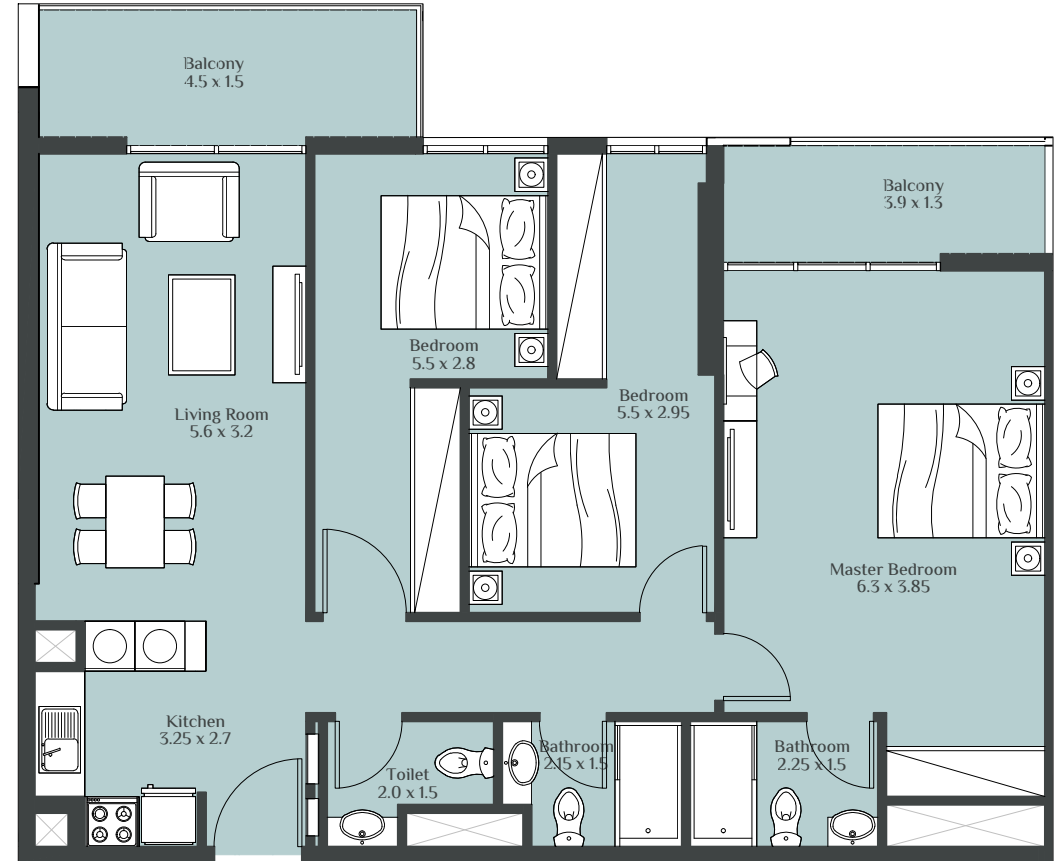
2 BEDROOM TYPE - R



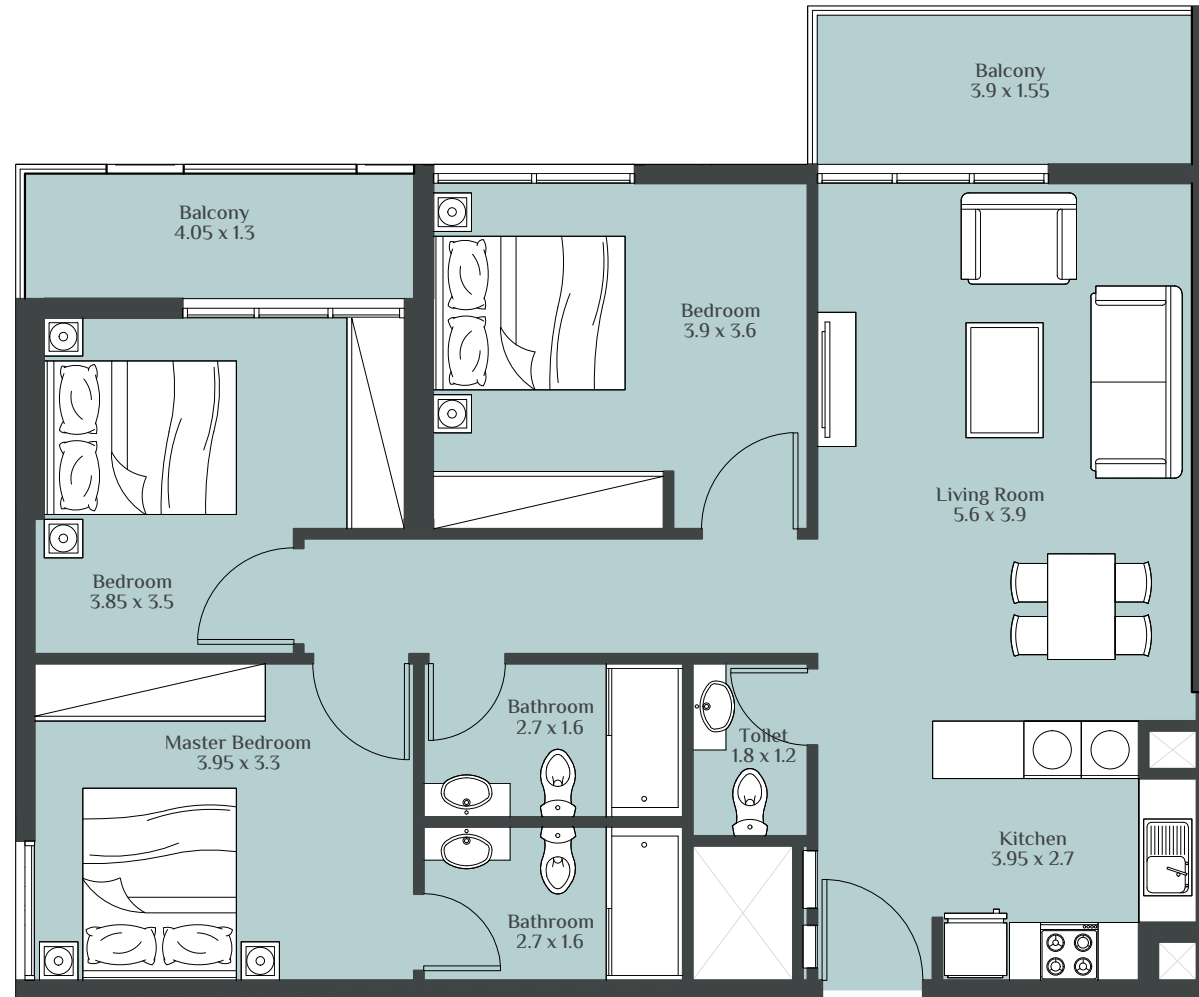
2 BEDROOM TYPE - S



3 BEDROOM TYPE - A



3 BEDROOM TYPE - B



ريپورتاج العقارية
Reportage.
Properties

Abu Dhabi | Head Office
Tamouh Tower
27th Floor, Al Reem Island
P.O. Box: 111949
United Arab Emirates
Phone: +971 2 204 3300
info@reportageuae.com

Dubai Office
Oberoi Centre
3rd Floor, Business Bay
P.O. Box: 27446
United Arab Emirates
Phone: +971 4 240 5556
info@reportageuae.com

Escrow Account Details
Account Name: Rukan Escrow
Account No.: 002393135911
IBAN No.: AE550070035911393101002
Currency: AED
Swift Code: ARAIAEAD

For more information, visit reportageuae.com
or call 800 7755 2 | +971 50 244 1078



برج - رُكان
RUKAN - TOWER

R.