

ARABIAN RANCHES

SEA BREEZE

Reportage.

REPORTAGE GROUP

Reportage Group is one of the largest private international developers with projects in the Middle East and Europe. We are focused and consistent in our objective to provide innovative, modern, and affordable housing solutions that not only offer our investors outstanding value but also provide home buyers a safe place to live in. Our mission is to be amongst the most trusted real estate companies globally by developing and providing homes that are equally elegant and affordable and provide you with a sense of belonging. We look forward to the upcoming years, and aspire to expand our real estate business globally.



Building legacies
in UAE and
beyond since 2014

DISCOVER BAKU

A Harmonious Fusion of
History and Modernity

Situated on the vibrant shores of the Caspian Sea, Baku is a city where tradition meets innovation. Known for its rich history, stunning architecture, and dynamic culture, Baku is the heart of Azerbaijan and one of the most exciting destinations in the Caucasus region. The city boasts a unique blend of Eastern charm and Western influences, making it an ideal place to live, work, and explore.





Location Features

10 min.
Drive to Landau School

10 min.
Drive to Kids Club

15 min.
Drive to Dream Fest Area

15 min.
Drive to Circus

20 min.
Drive to Water Park

20 min.
Drive to SPA and Wellness Centre

20 min.
Drive to Amburan Mall

40 min.
Drive to Airport



ARABIAN RANCHES

SEA BREEZE

ARABIAN RANCHES – SEA BREEZE

Arabian Ranches, developed by RS Capital Investment, is an exclusive residential community located in the prestigious Sea Breeze Resort near the Caspian Sea. This stunning project harmoniously blends the elegance of Eastern architecture with the serene beauty of coastal living, offering a perfect balance of luxury, tranquility, and modern sophistication. Inspired by the grandeur of Middle Eastern palaces, each residence captures the essence of the sea's natural splendor through intricately designed facades and timeless Eastern architecture. Seamlessly integrating indoor elegance with the surrounding landscape, Arabian Ranches provides a peaceful retreat, where the soothing sea breeze and natural sunlight enhance every space, offering unrivaled beauty just moments away from the vibrant city life.



SYMPHONY OF TWO WORLDS

KEY FEATURES

- Unit Types: Apartments & Townhouses
- Plot Area: **22,075.19 m²**
- Total Units: 372 Apartments | 80 Townhouses

Phase (I A)

- Unit Types: Apartments
- Plot Area: **11,933.79 m²**
- Total Units: 598 Apartments

Phase (I B)





ARABIAN RANCHES

SEA BREEZE



SEAS THE MOMENT
Arabian Ranches, Your Coastal Escape

DISCOVER THE SERENITY OF ARABIAN
RANCHES BY THE CASPIAN SEA





ARABIAN RANCHES

SEA BREEZE

WORLD-CLASS AMENITIES

- Private parking spaces
- Swimming pool
- Fitness center/gym
- Landau School
- Kids Club
- Amburan Mall (Open-air entertainment and shopping mall)
- DreamFest Area (International Music Festival)
- Circus
- Water Park
- SPA and Wellness Center
- Airport proximity

FAMILY-FRIENDLY SPACES

- Kids' play area
- Landscaped gardens
- 7/24 security and concierge service
- Multi-purpose sports courts
- Outdoor barbecue area
- Walking and cycling tracks

UNIT FEATURES

- Private balconies and terraces (per unit plan)
- Central heating and cooling system
- Built-in wardrobes in bedrooms
- Spacious living areas designed for optimal natural light
- Four bedrooms
- Townhouses with three levels of living space, with rooftop terraces, premium finishes



ARABIAN RANCHES
SEA BREEZE



ARABIAN RANCHES
SEA BREEZE



ARABIAN RANCHES
SEA BREEZE



ARABIAN RANCHES
SEA BREEZE





INTERIORS

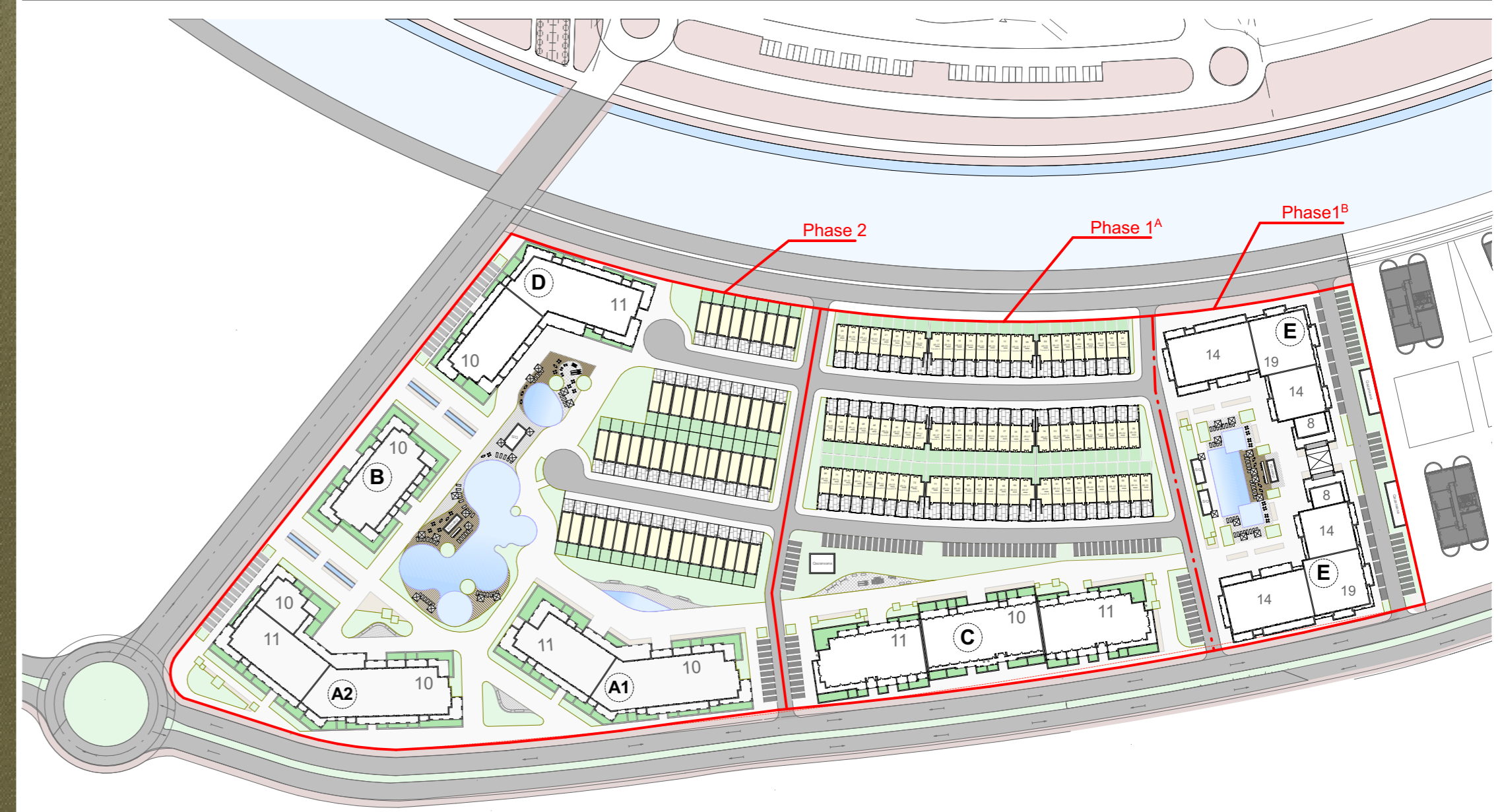


ARABIAN RANCHES
SEA BREEZE

TOWNHOUSES

All drawings and dimensions are approximate. Drawings are not to scale and are subject to change without notice. The developer reserves the right to make revisions. The units are measured at typical floors in the building and columns may vary in size depending on the floor level. The furnishing and accessories shown are for representation only. The availability, length and width of the balcony varies depending on which floor and which orientation the unit is located within the building. There will be slight differences in the internal areas between the same unit types depending on the shaft sizes that go through the units.

PHASE 1A

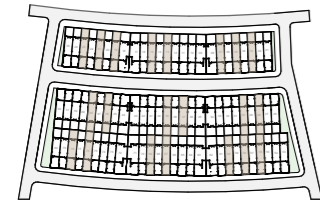
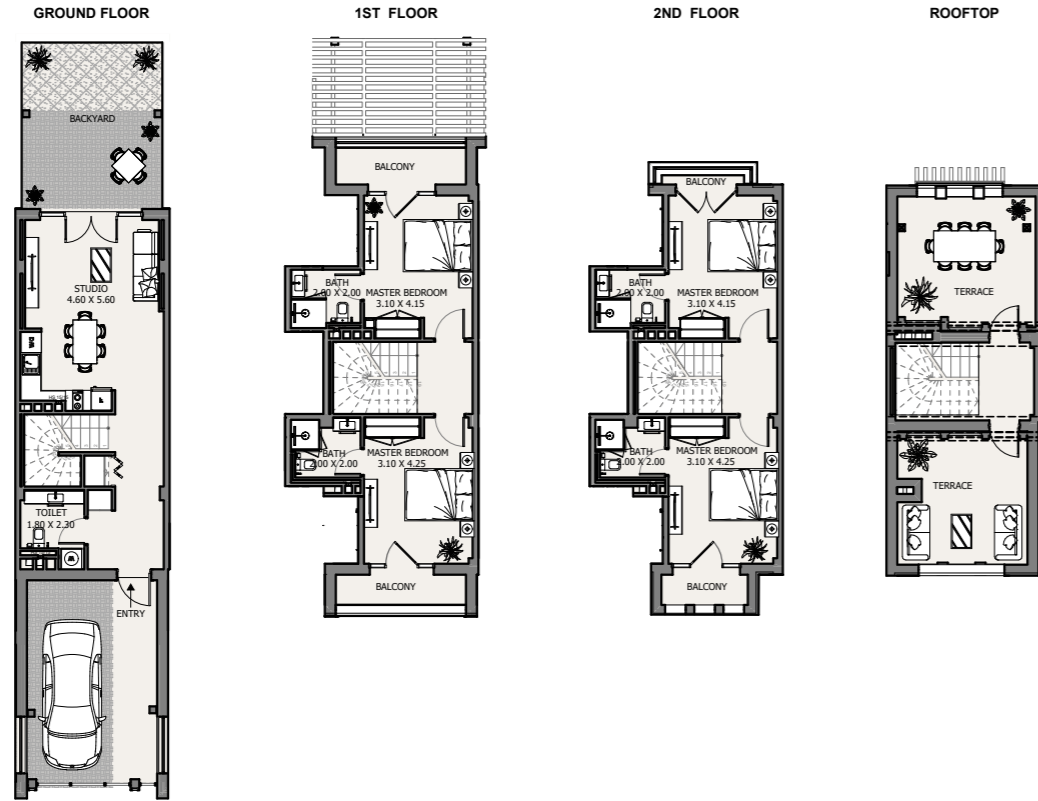


LEGEND

- Towers
- Townhouses
- Paved roads
- Greenery
- Water pools
- Sidewalks
- Private yards

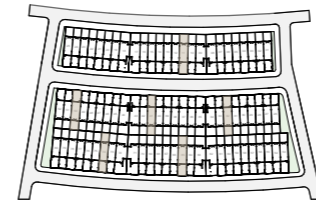
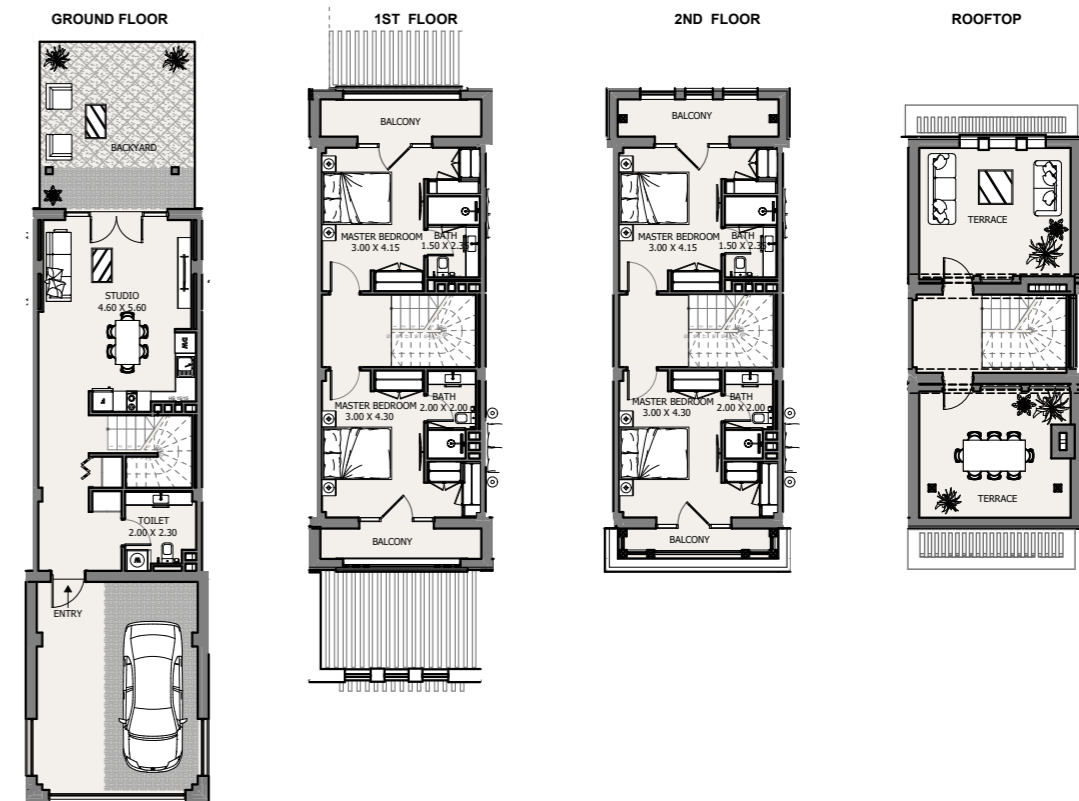
MASTERPLAN

TH | Type 4B - 02



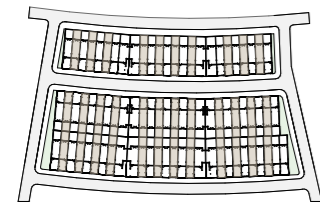
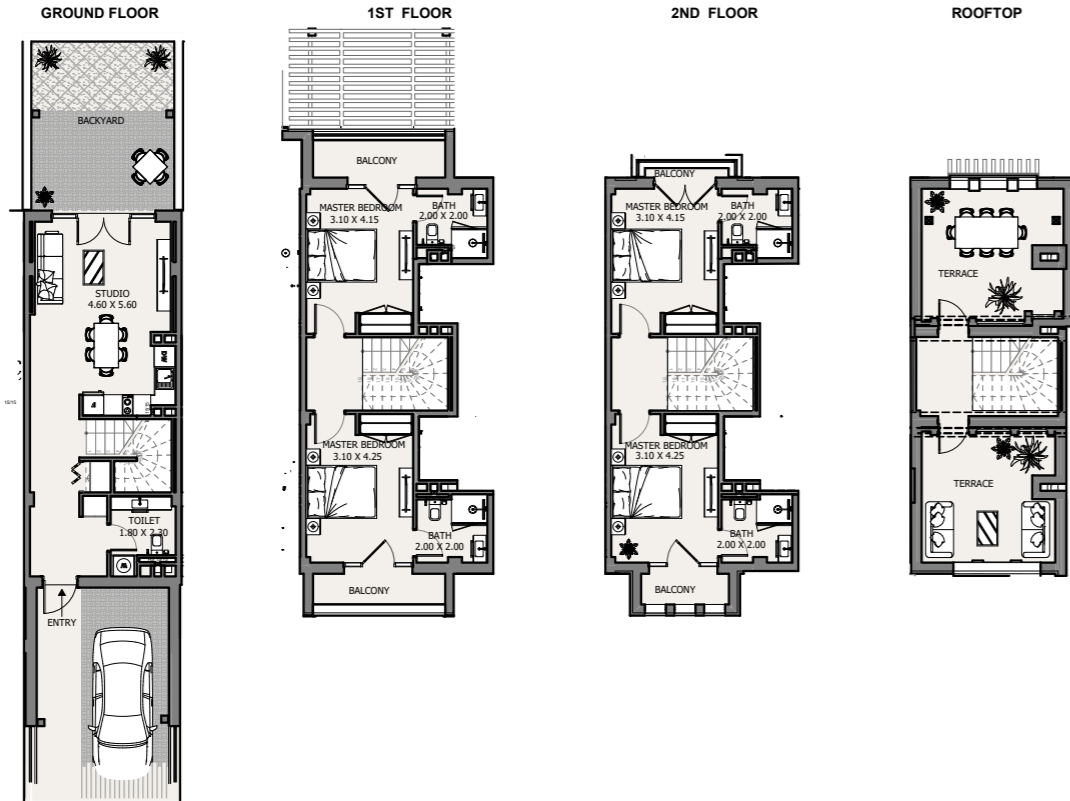
Internal Area	1624.2 sq.ft
Outdoor Area	1097.0 to 1322.4 sq.ft
Total Area	2721.1 to 2946.6 sq.ft

TH | Type 4B - 03



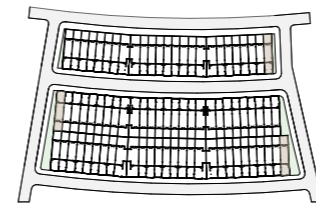
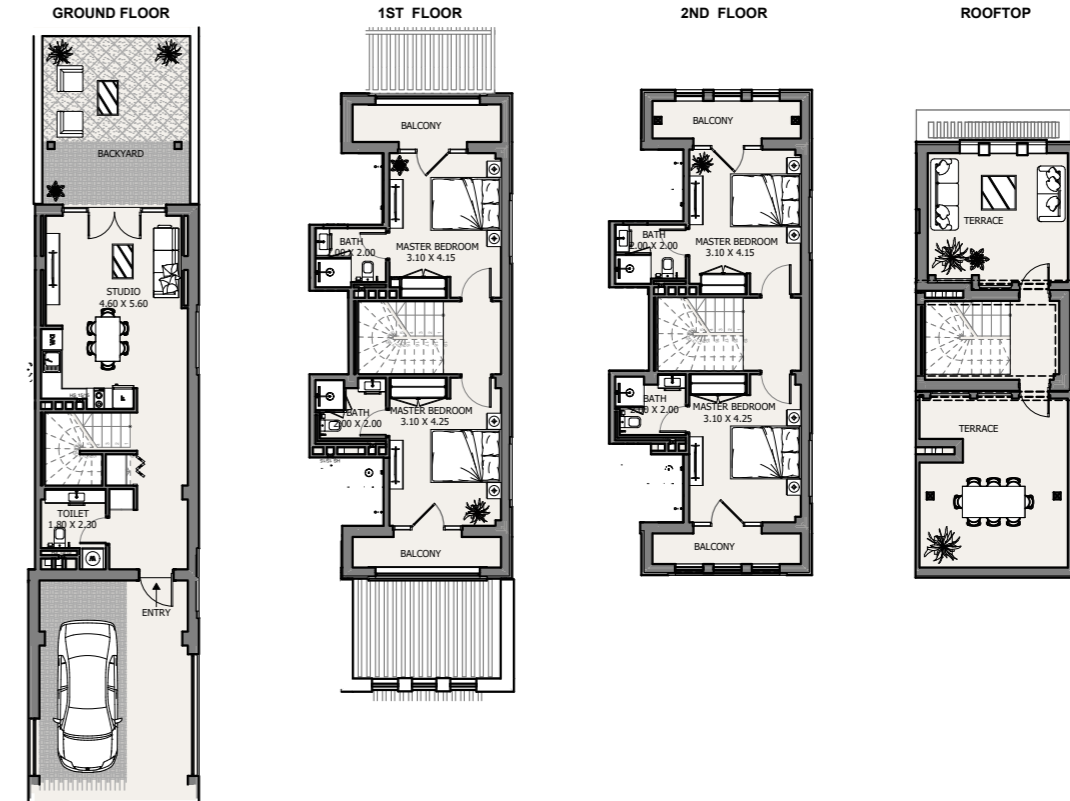
Internal Area	1780.6 sq.ft
Outdoor Area	1212.8 to 1351.1 sq.ft
Total Area	2993.3 to 3131.6 sq.ft

TH | Type 4B - 04



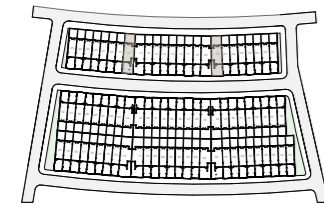
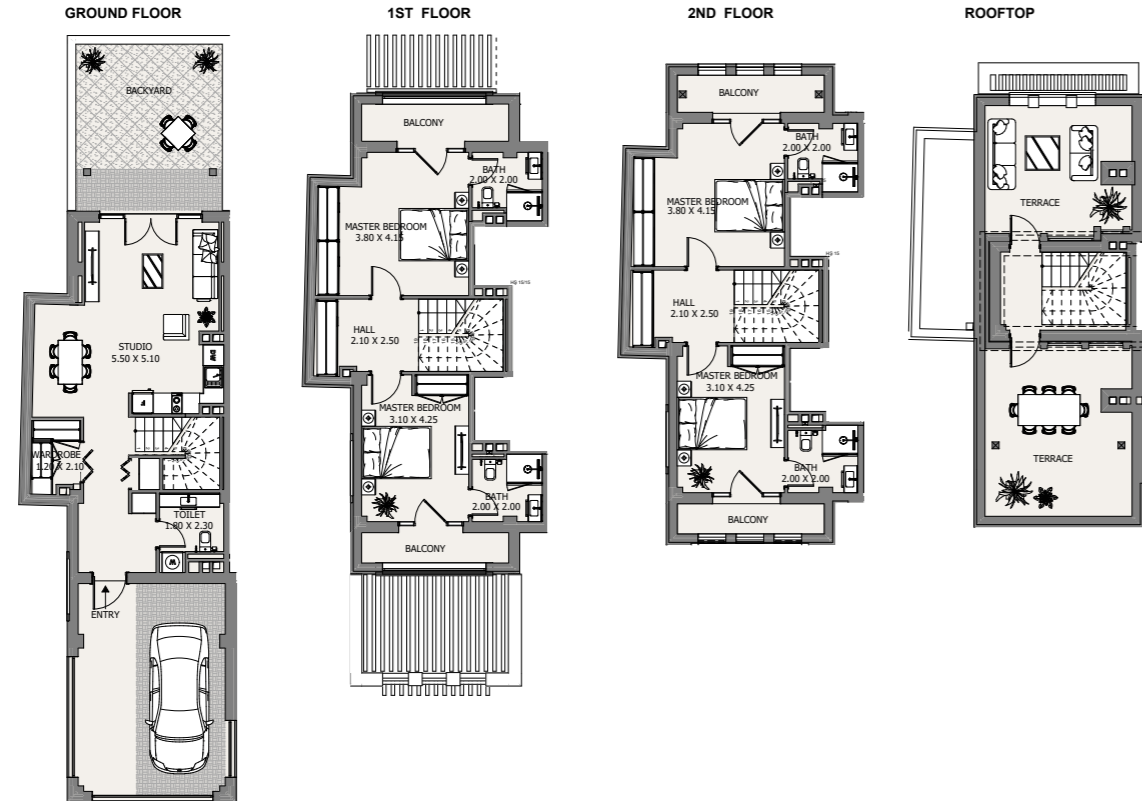
Internal Area	1633.7 sq.ft
Outdoor Area	1107.9 to 1323.5 sq.ft
Total Area	2741.7 to 2957.3 sq.ft

TH | Type 4B - 05



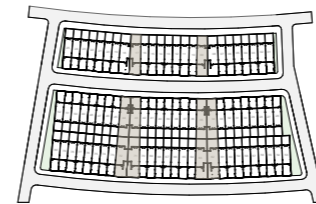
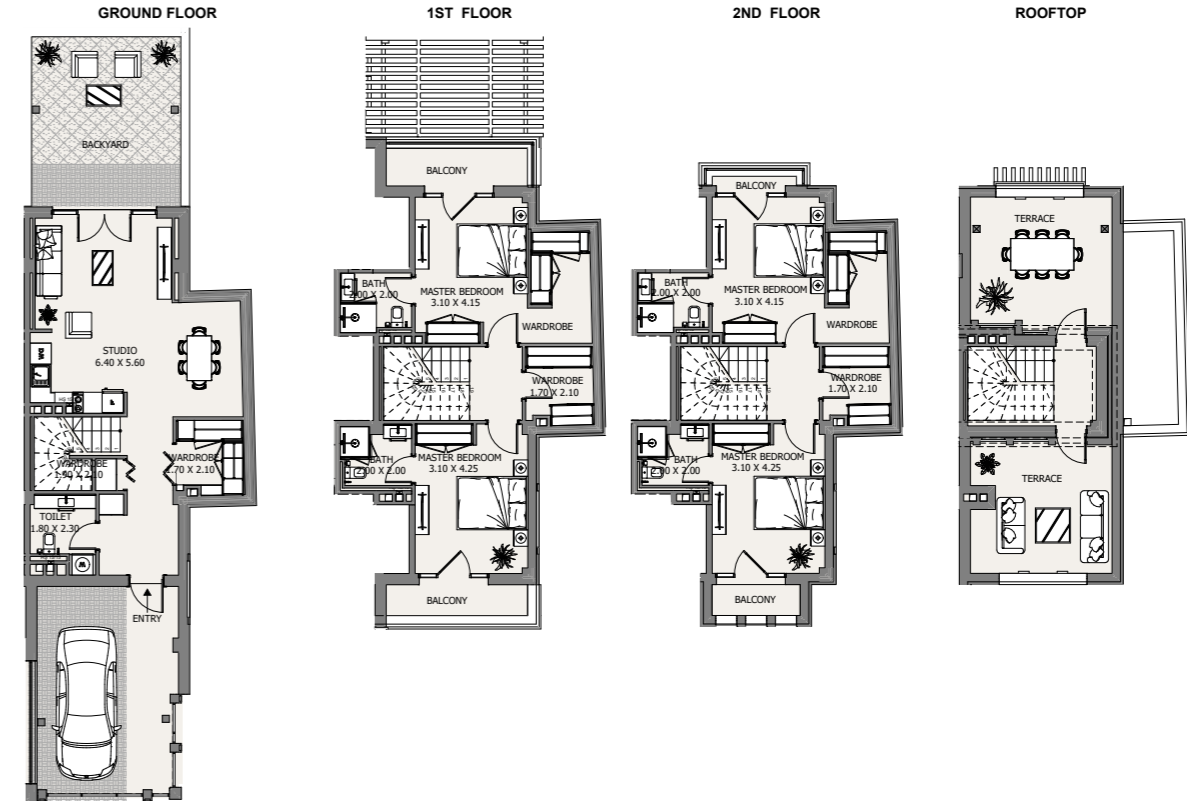
Internal Area	1728.8 sq.ft
Outdoor Area	1127.2 to 1319.1 sq.ft
Total Area	2857.0 to 3047.9 sq.ft

TH | Type 4B - 06



Internal Area	1983.7 sq.ft
Outdoor Area	1339.9 sq.ft
Total Area	3323.6 sq.ft

TH | Type 4B - 07



Internal Area	1871.6 to 2043.1 sq.ft
Outdoor Area	1297.9 to 1629.4 sq.ft
Total Area	3206.8 to 3635.8 sq.ft

ARABIAN RANCHES
SEA BREEZE

FACADE TYPES

FACADE TYPE A



FACADE TYPE B



FACADE TYPE C



ARABIAN RANCHES
SEA BREEZE

TOWER (C) UNIT TYPES

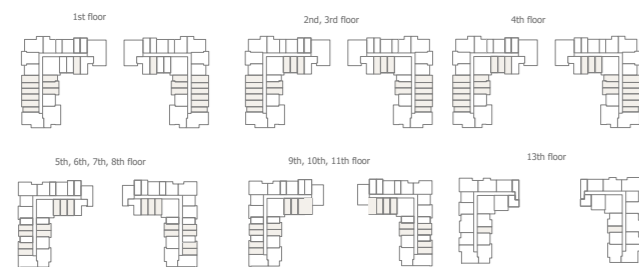
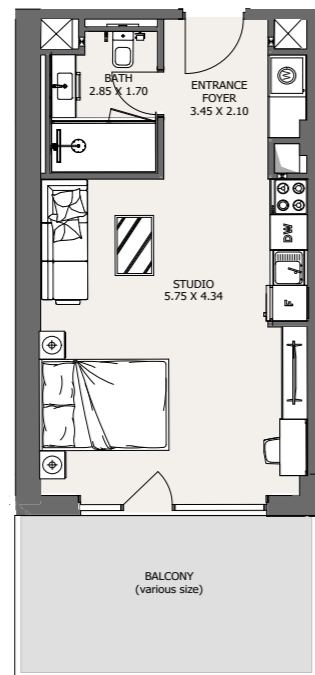
All drawings and dimensions are approximate. Drawings are not to scale and are subject to change without notice. The developer reserves the right to make revisions. The units are measured at typical floors in the building and columns may vary in size depending on the floor level. The furnishing and accessories shown are for representation only. The availability, length and width of the balcony varies depending on which floor and which orientation the unit is located within the building. There will be slight differences in the internal areas between the same unit types depending on the shaft sizes that go through the units.

PHASE 1A



ST | Type A1

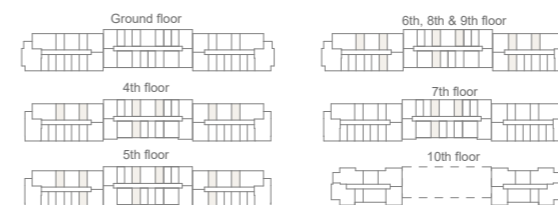
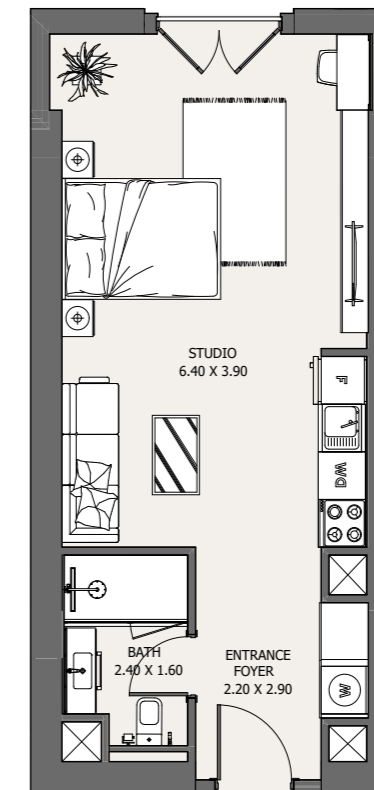
Tower C - From G to 9th Floor



Internal Area	326.7 to 500.4 sq.ft
Outdoor Area	28.1 to 182.1 sq.ft
Total Area	362.6 to 572.2 sq.ft

ST | Type A2

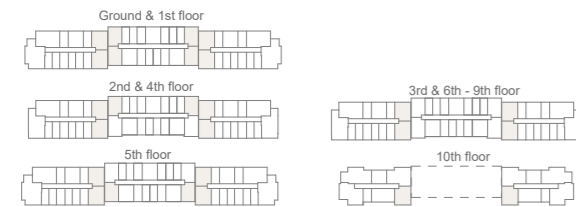
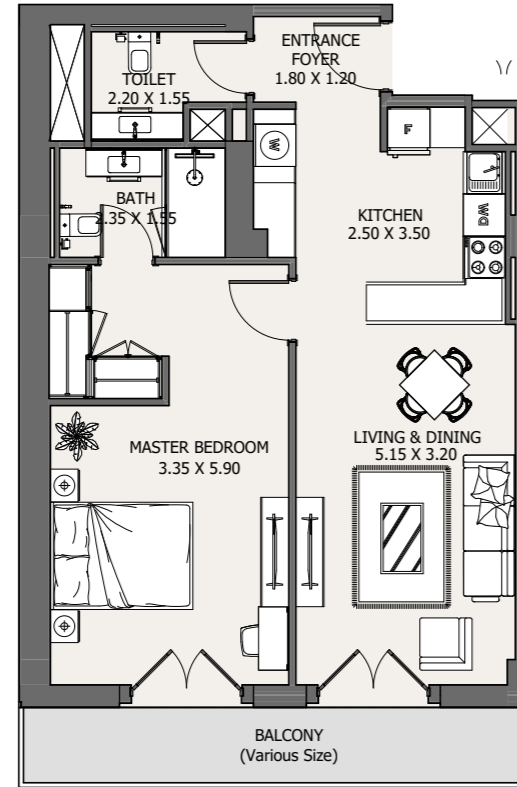
Tower C - From 4th to 9th Floor



Internal Area	370.2 to 466.8 sq.ft
Outdoor Area	0 sq.ft
Total Area	370.2 to 466.8 sq.ft

1B | Type A

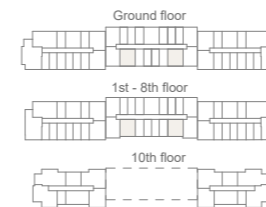
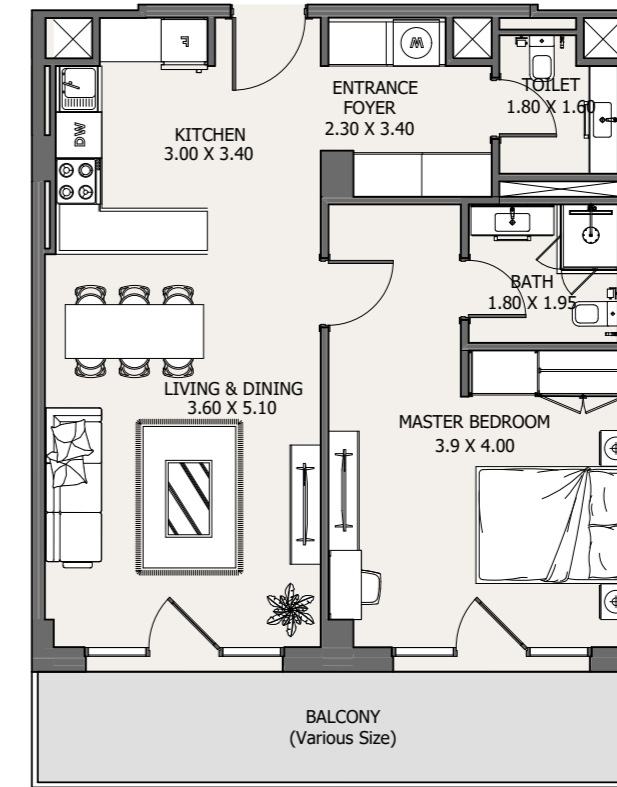
Tower C - From G to 10th Floor



Internal Area	702.9 to 825.3 sq.ft
Outdoor Area	50.5 to 229.7 sq.ft
Total Area	767.0 to 1027.8 sq.ft

1B | Type A2

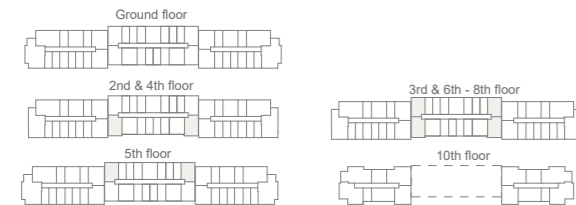
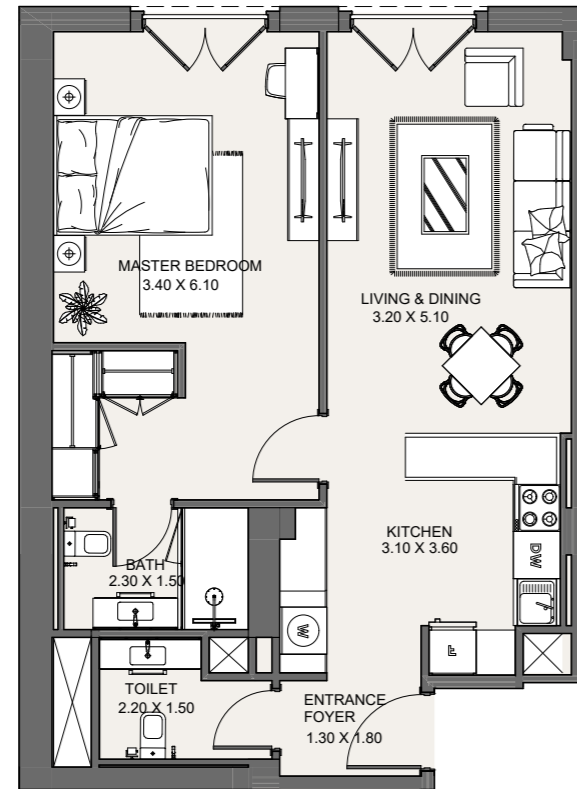
Tower C - From G to 8th Floor



Internal Area	700.4 to 719.4 sq.ft
Outdoor Area	85.0 to 156.4 sq.ft
Total Area	785.8 to 874.5.8 sq.ft

1B | Type A3

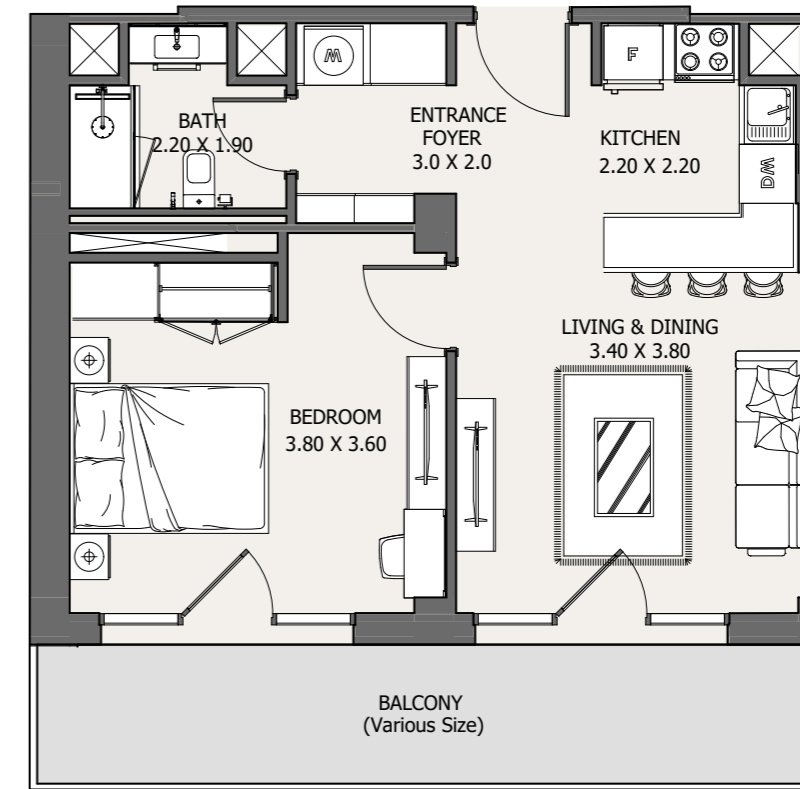
Tower C - From 2nd to 8th Floor



Internal Area	710.3 to 833.0 sq.ft
Outdoor Area	0 sq.ft
Total Area	710.3 to 833.0 sq.ft

1B | Type A4

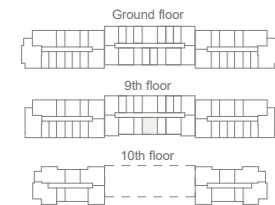
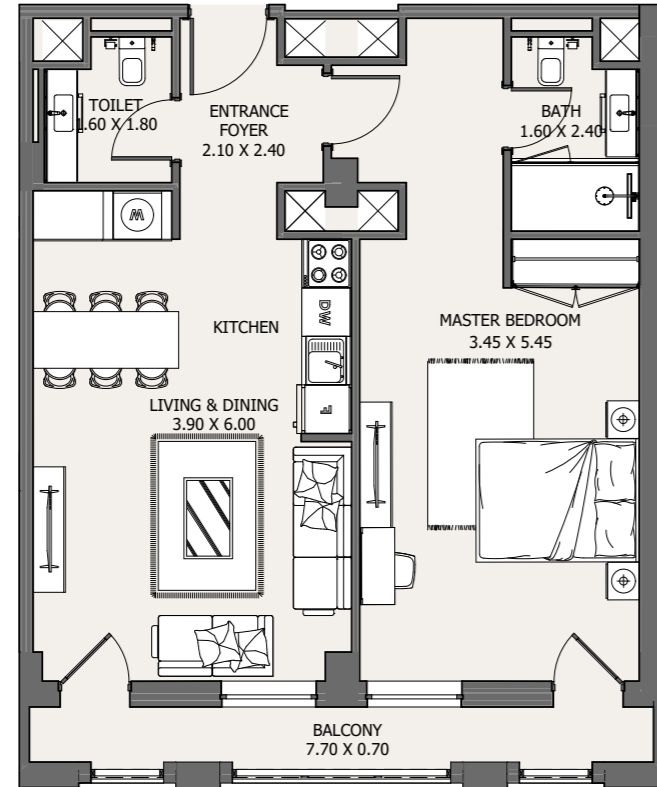
Tower C - 9th Floor



Internal Area	515.8 to 529.6 sq.ft
Outdoor Area	275.0 to 280.1 sq.ft
Total Area	790.8 to 809.7 sq.ft

1B | Type A5

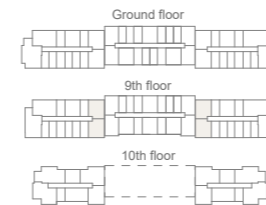
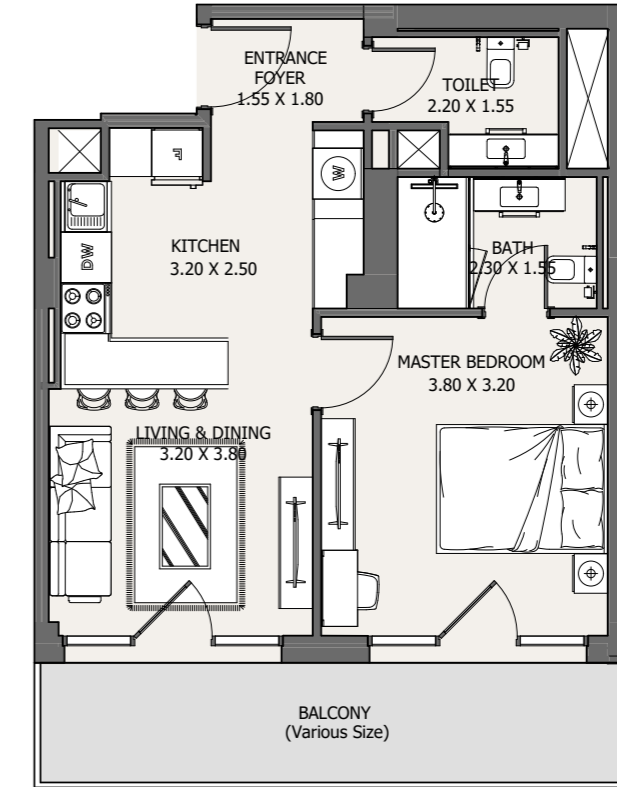
Tower C - 9th Floor



Internal Area	706.1 sq.ft
Outdoor Area	96.8.1 sq.ft
Total Area	802.9 sq.ft

1B | Type A6

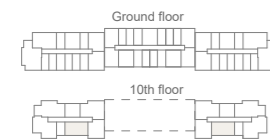
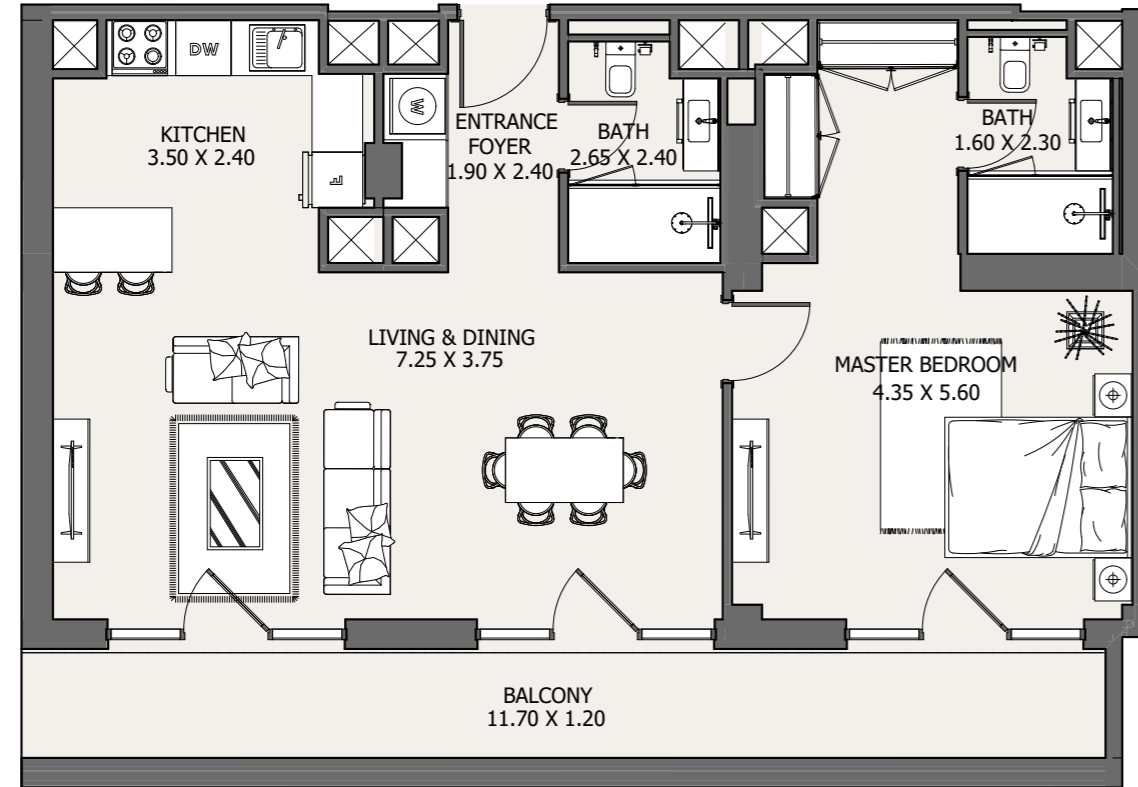
Tower C - 9th Floor



Internal Area	534.9 to 588.5 sq.ft
Outdoor Area	122.3 to 170.3 sq.ft
Total Area	705.1 to 710.7 sq.ft

1B | Type A7

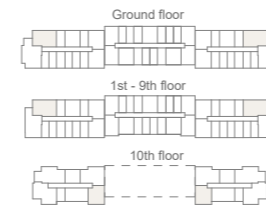
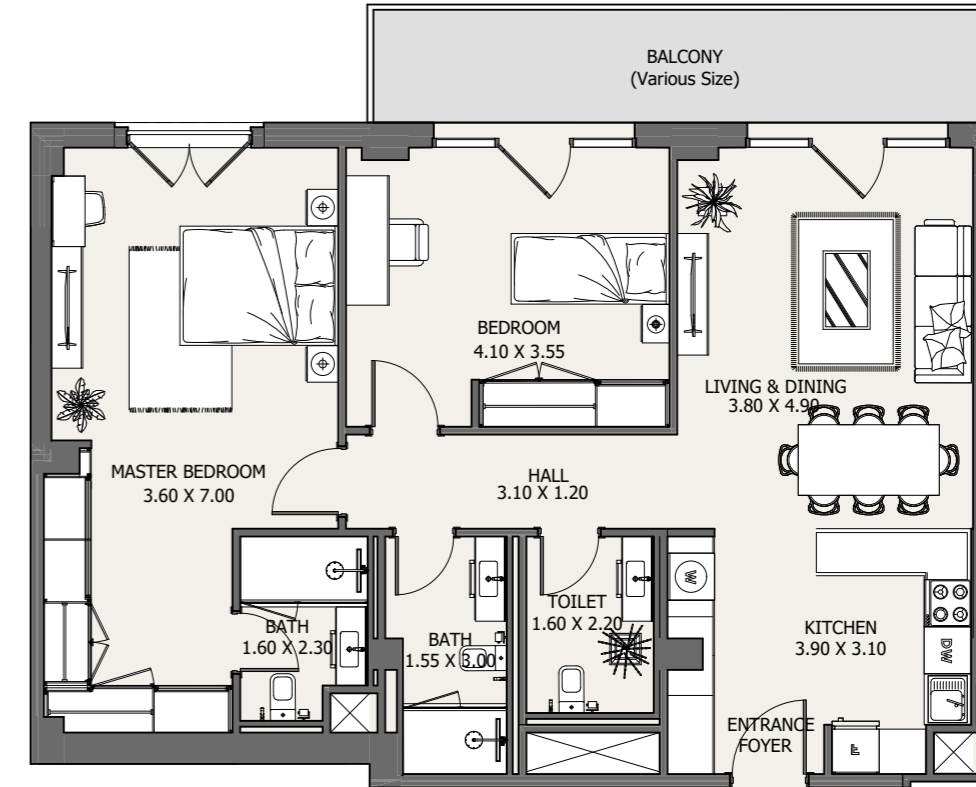
Tower C - 10th Floor



Internal Area	1203.60 sq.ft
Outdoor Area	353.5 sq.ft
Total Area	1557.1 sq.ft

2B | Type A1

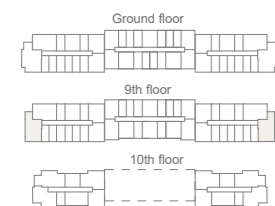
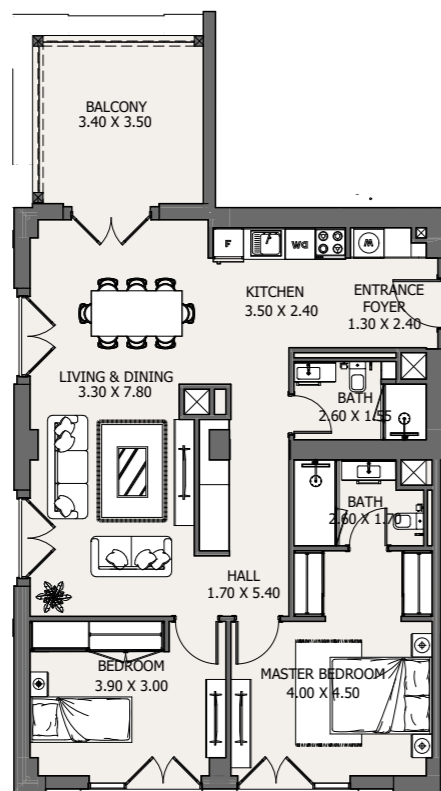
Tower C - From G to 9th Floor



Internal Area	1044.1 to 1053.6 sq.ft
Outdoor Area	107.6 to 574.0 sq.ft
Total Area	1161.2 to 1618.1 sq.ft

2B | Type A2

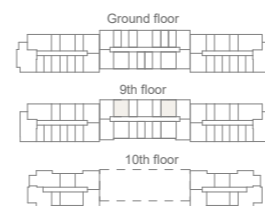
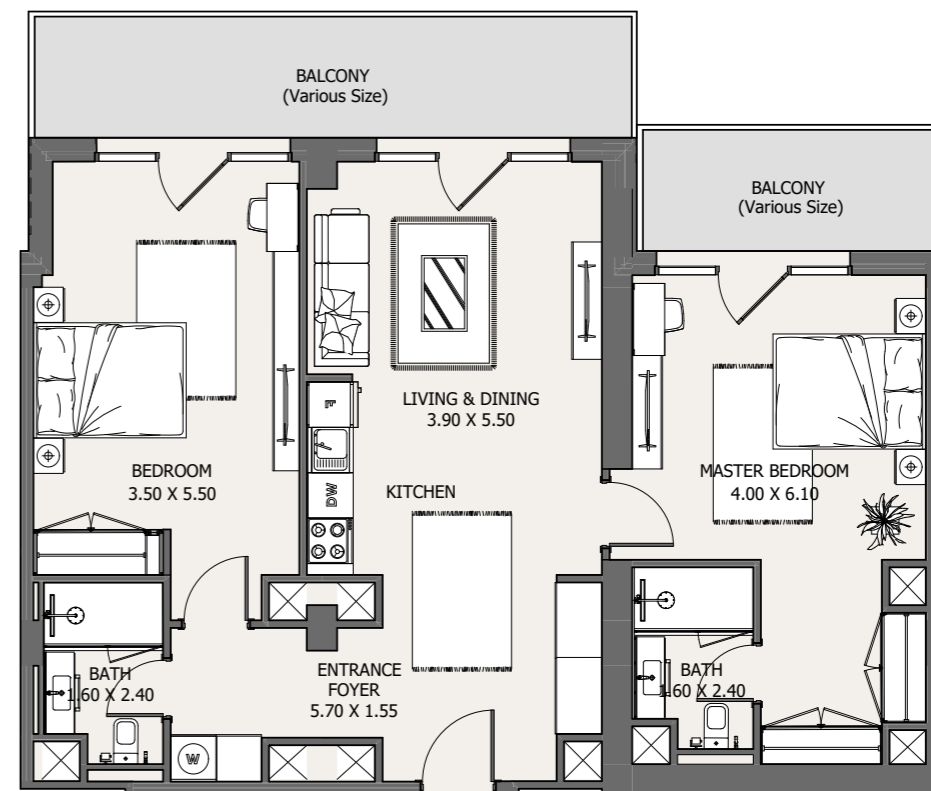
Tower C - 9th Floor



Internal Area	1010.3 sq.ft
Outdoor Area	157.5 sq.ft
Total Area	1167.8 sq.ft

2B | Type A3

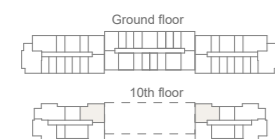
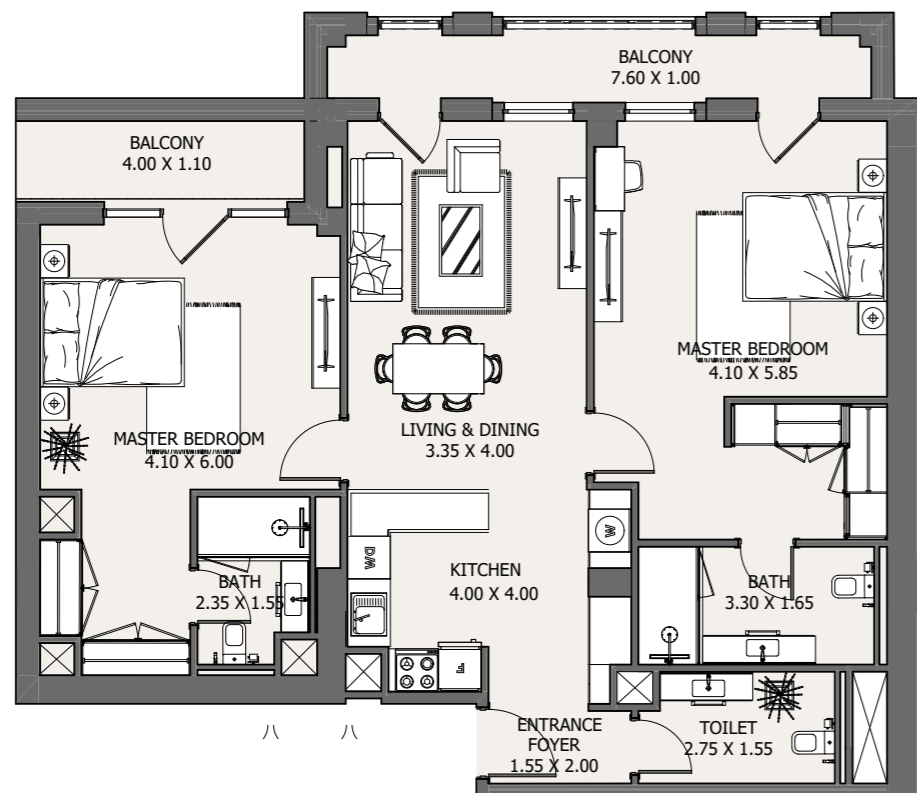
Tower C - 9th Floor



Internal Area	1022.4 to 1053.6 sq.ft
Outdoor Area	255.0 to 256.7 sq.ft
Total Area	1277.4 to 1285.3 sq.ft

2B | Type A4

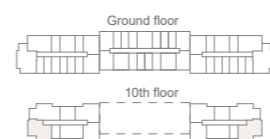
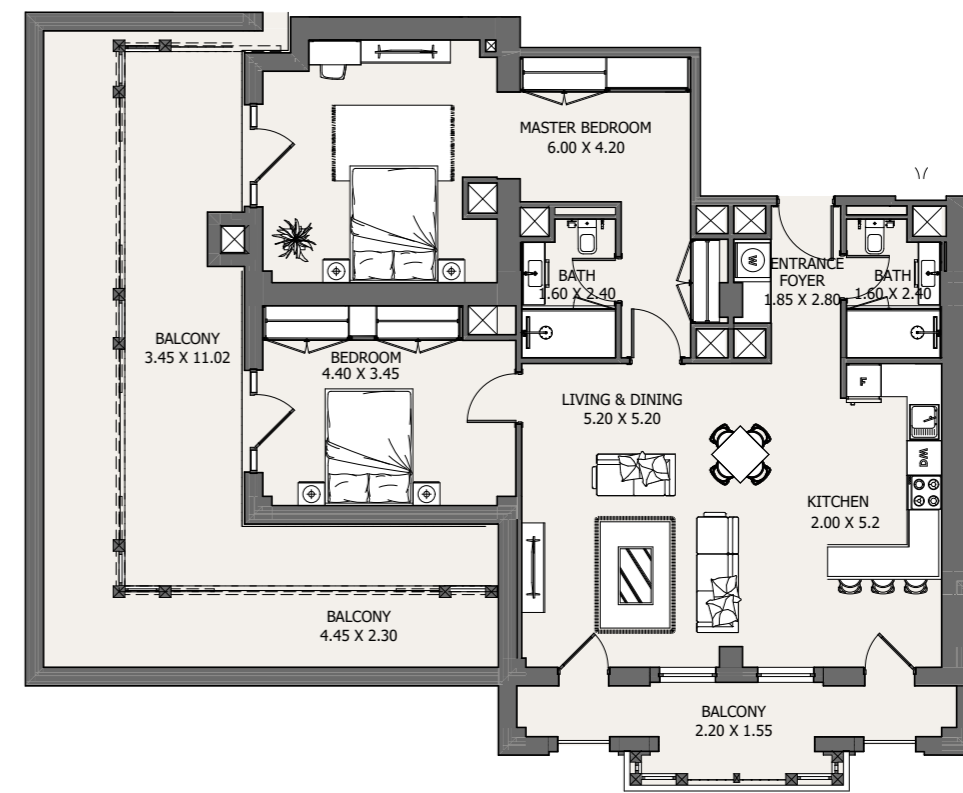
Tower C - 10th Floor



Internal Area	11126.4 sq.ft
Outdoor Area	178.5 sq.ft
Total Area	1304.9 sq.ft

2B | Type A5

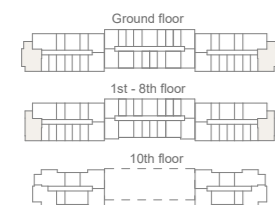
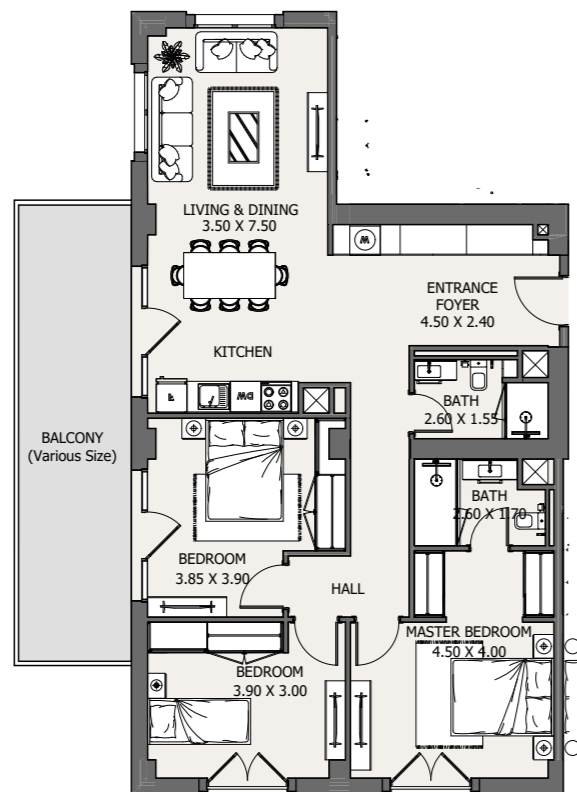
Tower C - 10th Floor



Internal Area	1164.9 sq.ft
Outdoor Area	758.1 sq.ft
Total Area	1923.0 sq.ft

3B | Type A1

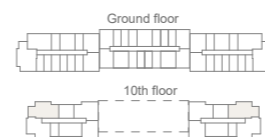
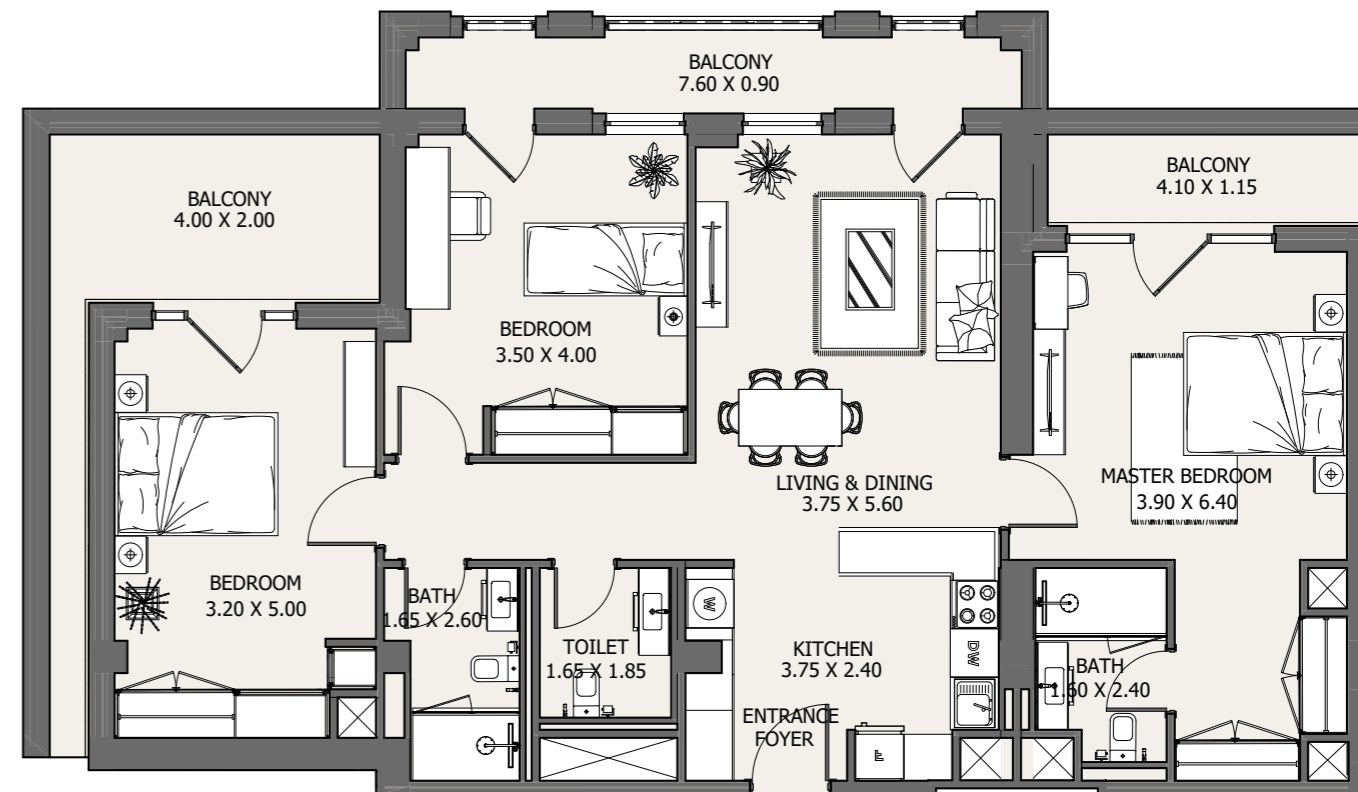
Tower C - From G to 8th Floor



Internal Area	1149.3 to 1342.3 sq.ft
Outdoor Area	174.4 to 660.0 sq.ft
Total Area	1341.6 to 1912 sq.ft

3B | Type A2

Tower C - 10th Floor



Internal Area	1203.6 sq.ft
Outdoor Area	353.5 sq.ft
Total Area	1557.1 sq.ft

ARABIAN RANCHES
SEA BREEZE

TOWER (E) UNIT TYPES

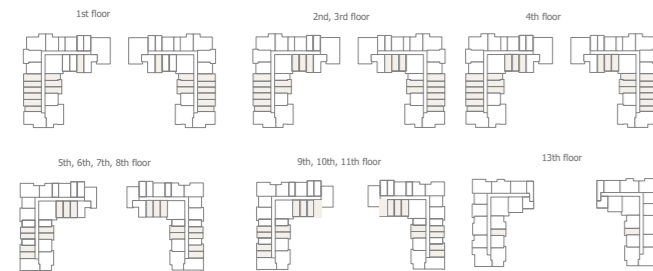
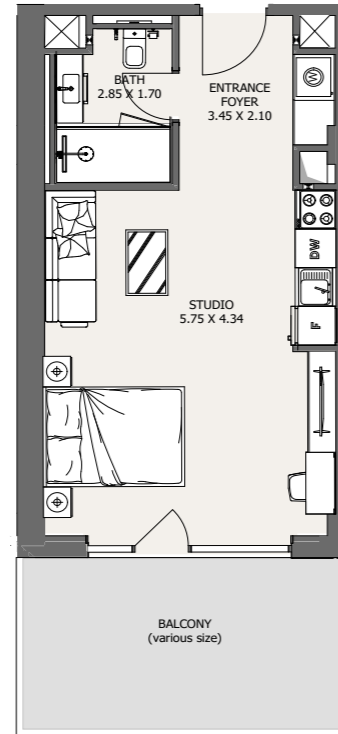
All drawings and dimensions are approximate. Drawings are not to scale and are subject to change without notice. The developer reserves the right to make revisions. The units are measured at typical floors in the building and columns may vary in size depending on the floor level. The furnishing and accessories shown are for representation only. The availability, length and width of the balcony varies depending on which floor and which orientation the unit is located within the building. There will be slight differences in the internal areas between the same unit types depending on the shaft sizes that go through the units.

PHASE 1B



ST | Type A1

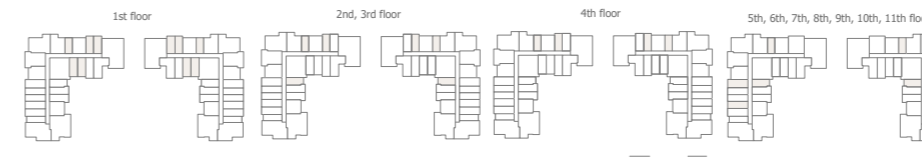
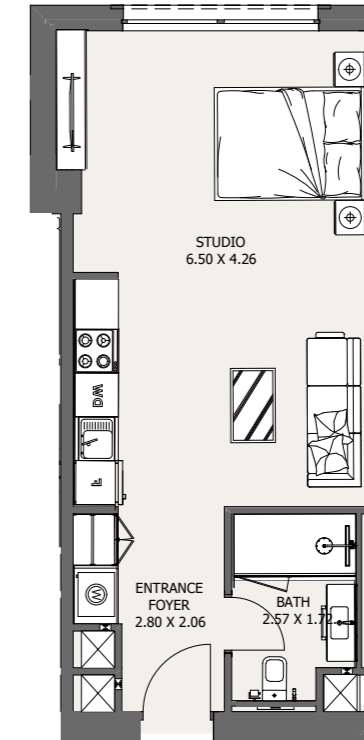
Tower E - From G to 9th Floor



Internal Area	326.7 to 500.4 sq.ft
Outdoor Area	28.1 to 182.1 sq.ft
Total Area	362.6 to 572.6 sq.ft

ST | Type A2

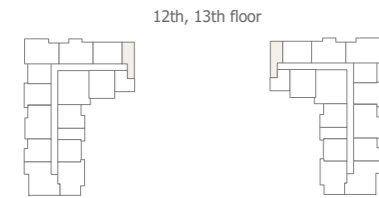
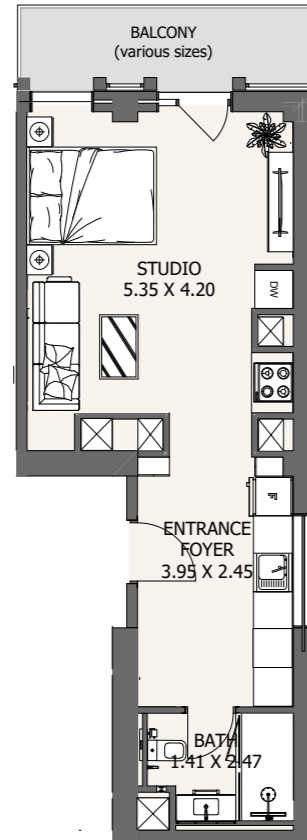
Tower E - From G to 9th Floor



Internal Area	373.5 to 502.6 sq.ft
Outdoor Area	0 sq.ft
Total Area	373.5 to 502.6 sq.ft

ST | Type A3

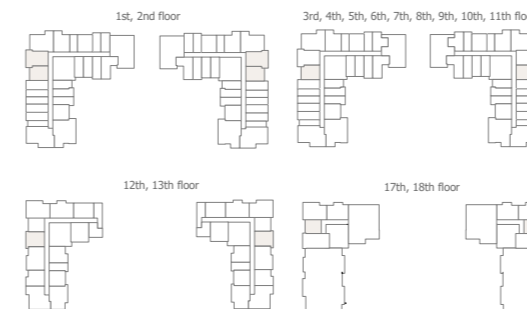
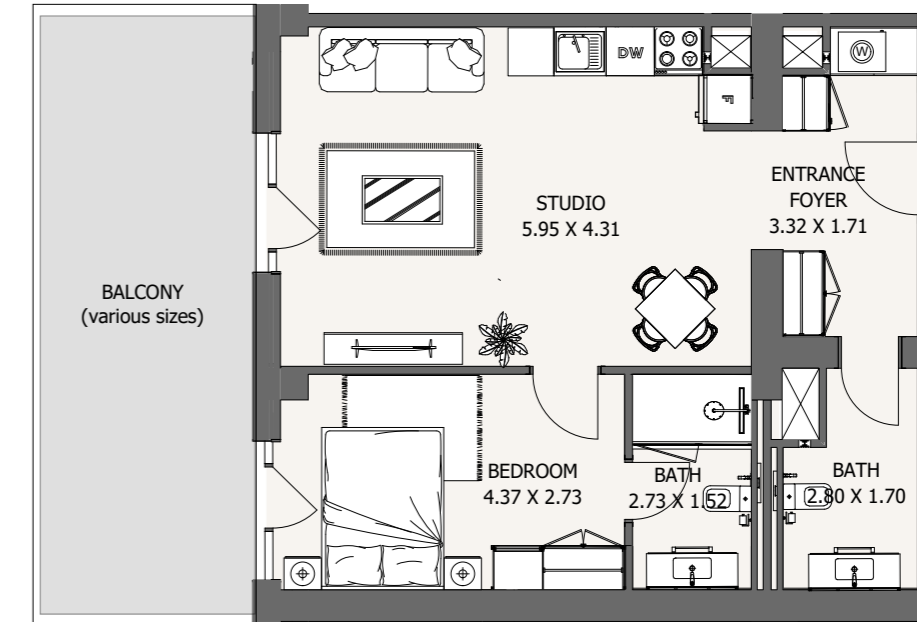
Tower E - From G to 9th Floor



Internal Area	468.6 to 473.8 sq.ft
Outdoor Area	71.5 to 447.5 sq.ft
Total Area	545.3 to 916 sq.ft

1B | Type A1

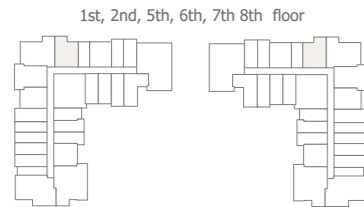
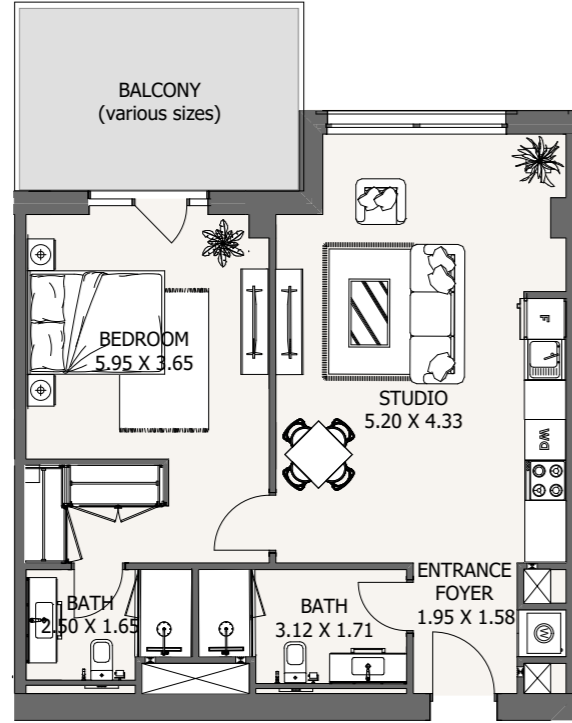
Tower E - From G to 9th Floor



Internal Area	665.2 to 724.1 sq.ft
Outdoor Area	59.2 to 316.9 sq.ft
Total Area	724.4 to 986.5 sq.ft

1B | Type A2

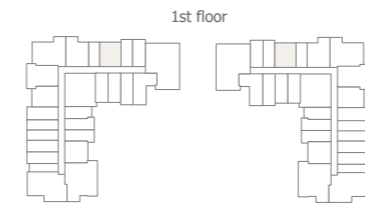
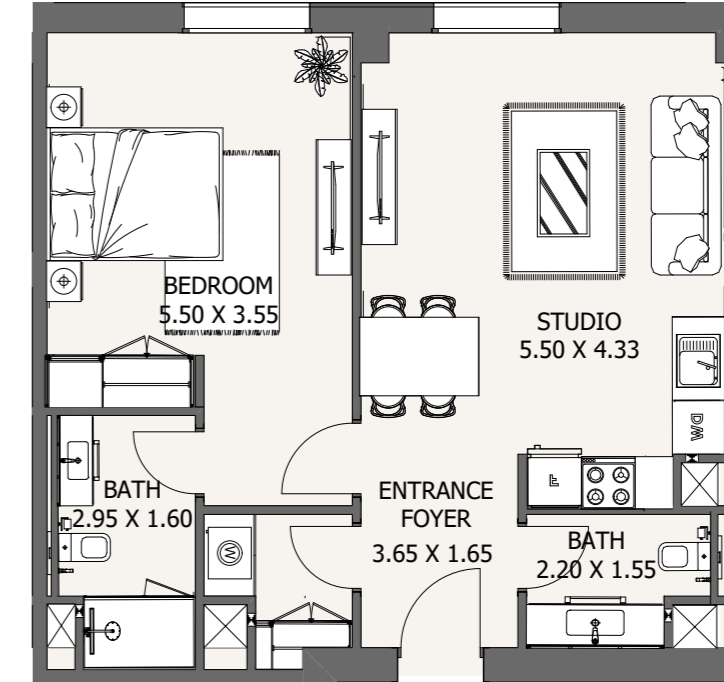
Tower E - From G to 9th Floor



Internal Area	661.8 to 734.4 sq.ft
Outdoor Area	59.4 to 149.7 sq.ft
Total Area	721.2 to 877.3 sq.ft

1B | Type A3

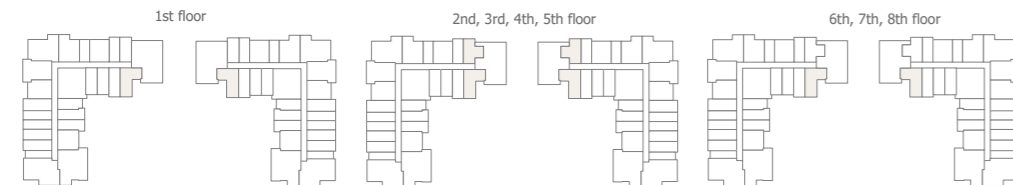
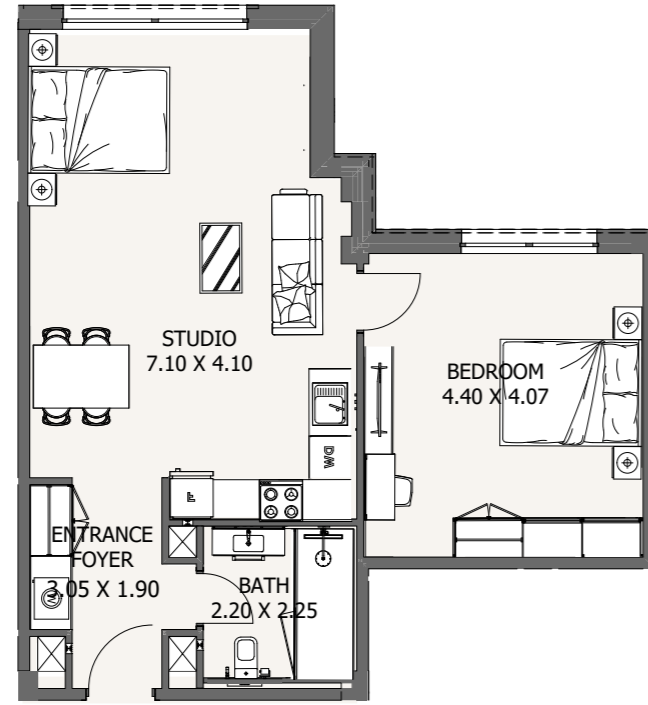
Tower E - From G to 9th Floor



Internal Area	666.6 to 666.6 sq.ft
Outdoor Area	0 sq.ft
Total Area	666.6 to 666.6 sq.ft

1B | Type A4

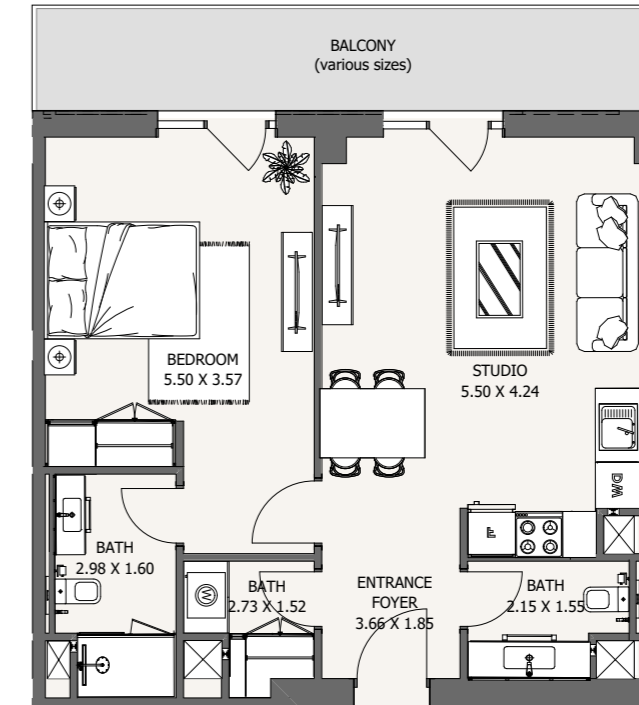
Tower E - From G to 9th Floor



Internal Area	683.9 to 720.3 sq.ft
Outdoor Area	0 to 102 sq.ft
Total Area	709.6 to 808.4 sq.ft

1B | Type A5

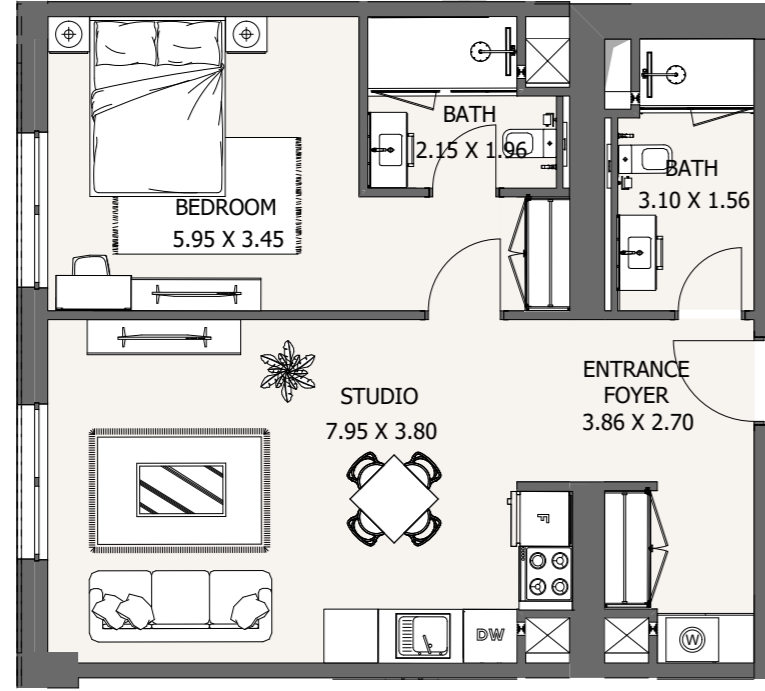
Tower E - From G to 9th Floor



Internal Area	665.3 to 757.9 sq.ft
Outdoor Area	62.4 to 116.2 sq.ft
Total Area	727.8 to 868.3 sq.ft

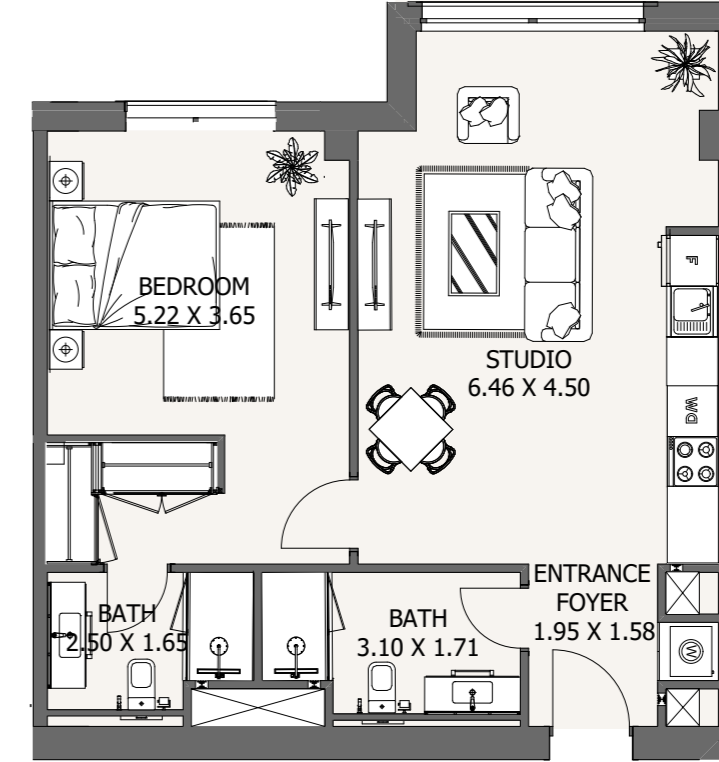
1B | Type A6

Tower E - From G to 9th Floor



1B | Type A7

Tower E - From G to 9th Floor



3rd, 4th, 5th, 6th, 7th, 8th, 9th, 10th, 11th floor



12th, 13th floor

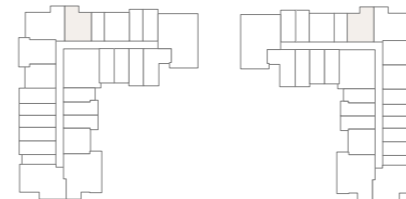


17th, 18th floor



Internal Area	663.7 to 677.8 sq.ft
Outdoor Area	0 sq.ft
Total Area	663.7 to 677.8 sq.ft

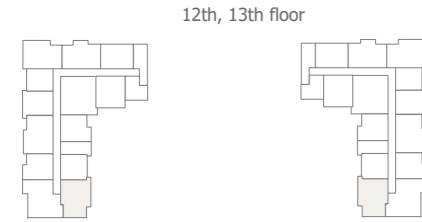
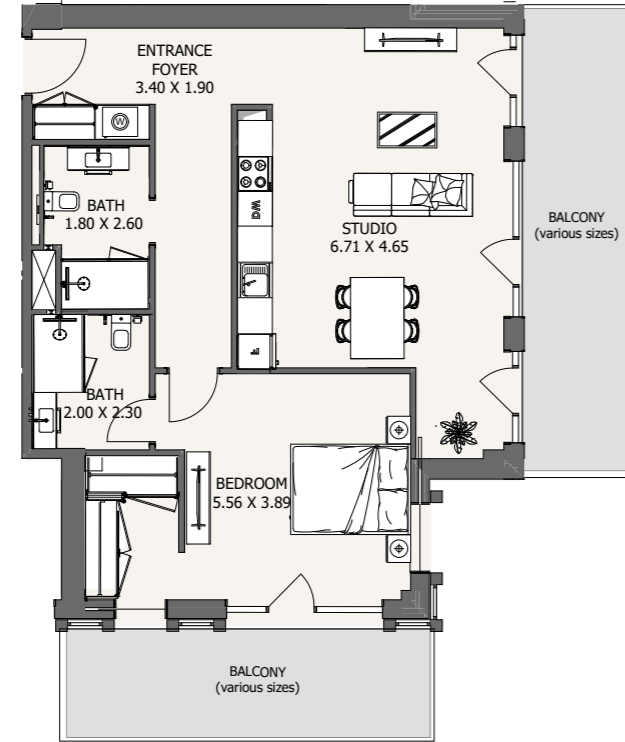
3rd, 4th floor



Internal Area	738.6 to 738.6 sq.ft
Outdoor Area	0 sq.ft
Total Area	738.6 to 738.6 sq.ft

1B | Type A8

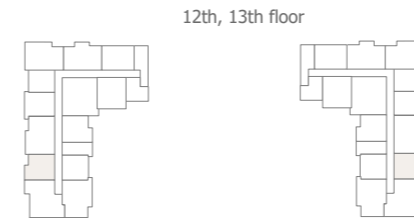
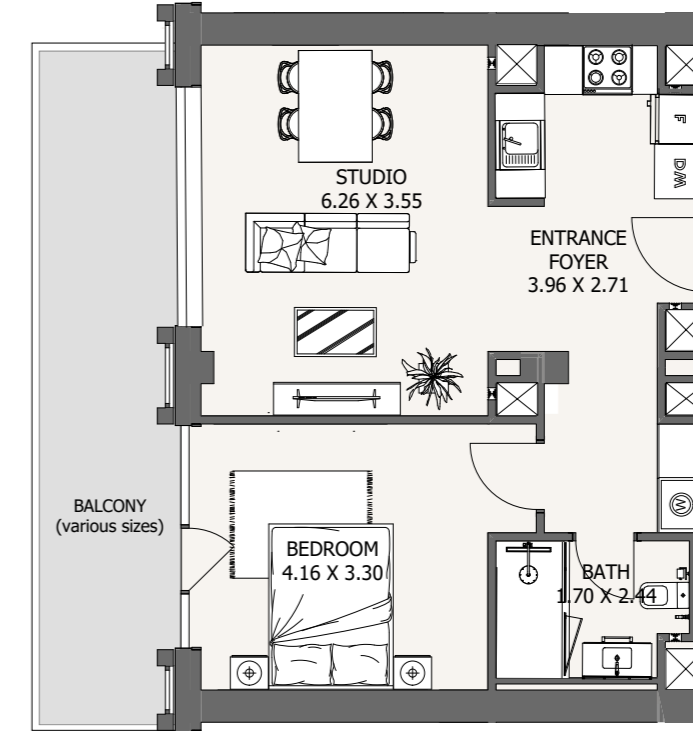
Tower E - From G to 9th Floor



Internal Area	848.6 to 870.9 sq.ft
Outdoor Area	142.8 to 309.1 sq.ft
Total Area	991.5 to 1180 sq.ft

1B | Type A9

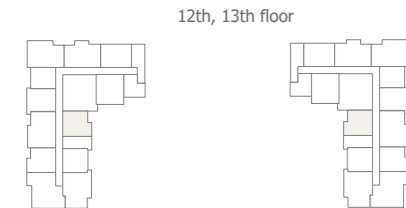
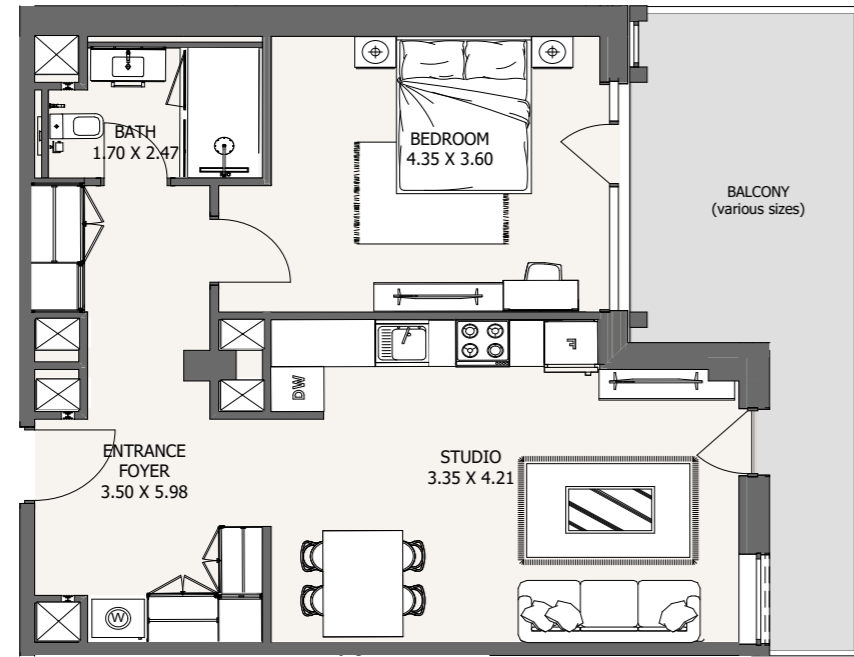
Tower E - From G to 9th Floor



Internal Area	586.2 to 588.2 sq.ft
Outdoor Area	66.3 to 211.2 sq.ft
Total Area	654.6 to 797.4 sq.ft

1B | Type A10

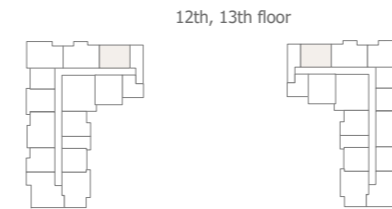
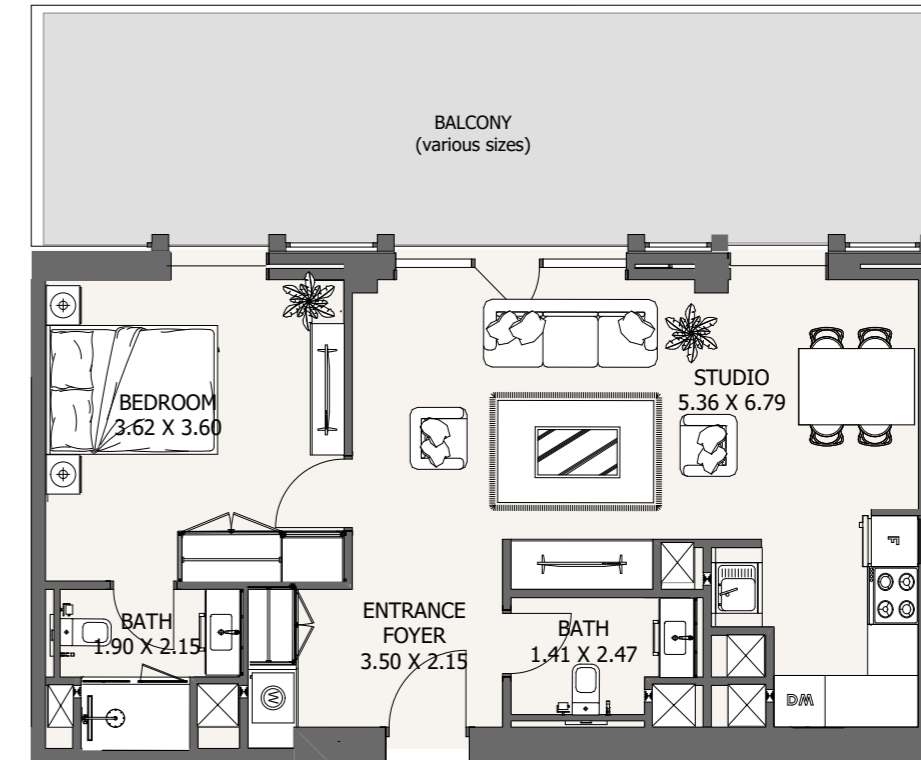
Tower E - From G to 9th Floor



Internal Area	670.6 to 678.2 sq.ft
Outdoor Area	88.6 to 130.6 sq.ft
Total Area	759.9 to 808.8 sq.ft

1B | Type A11

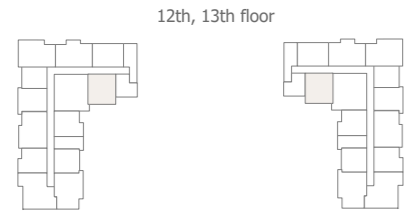
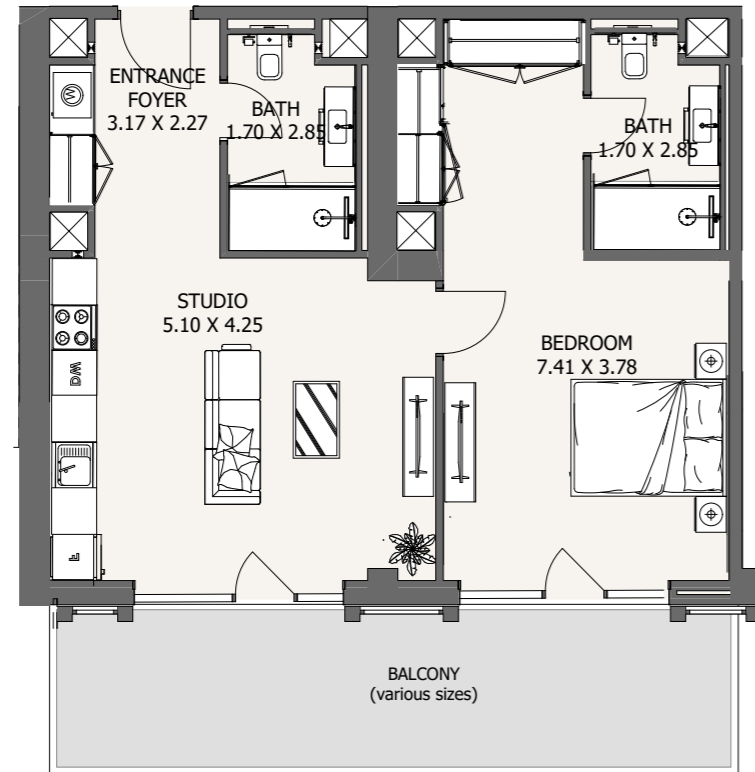
Tower E - From G to 9th Floor



Internal Area	659.4 to 678.2 sq.ft
Outdoor Area	22.4 to 251.9 sq.ft
Total Area	681.8 to 930.1 sq.ft

1B | Type A12

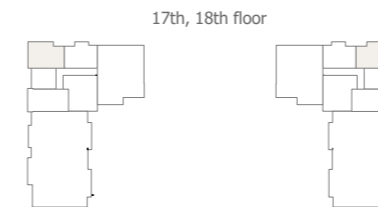
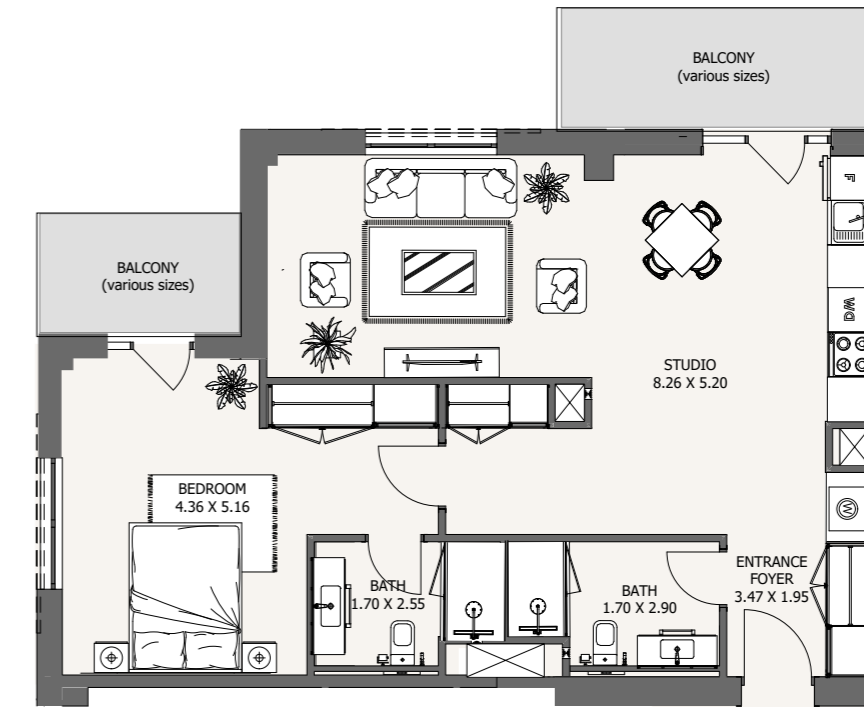
Tower E - From G to 9th Floor



Internal Area	666.6 to 666.6 sq.ft
Outdoor Area	0 sq.ft
Total Area	666.6 to 666.6 sq.ft

1B | Type A13

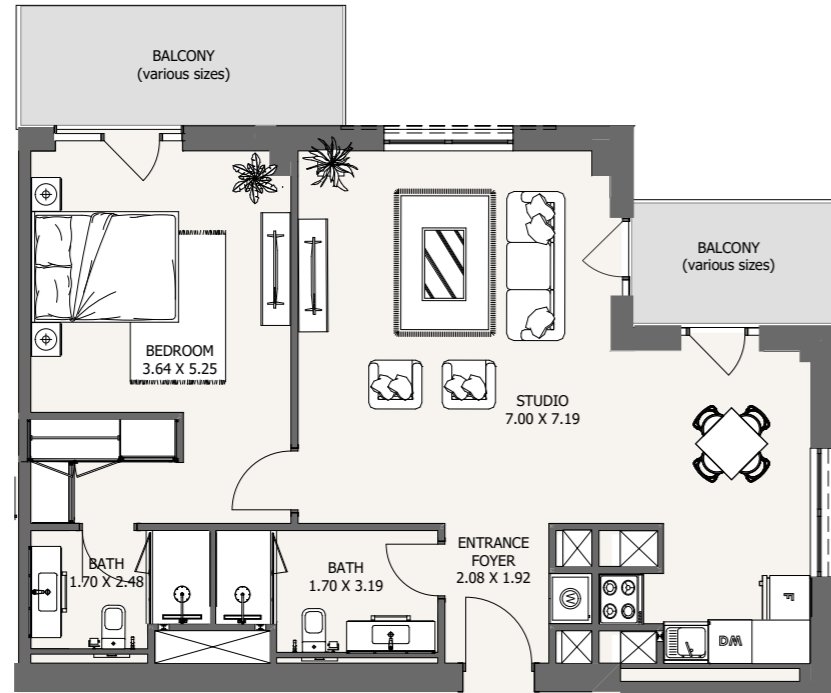
Tower E - From G to 9th Floor



Internal Area	831.5 to 843.5 sq.ft
Outdoor Area	38.8 to 113.3 sq.ft
Total Area	870.3 to 956.8 sq.ft

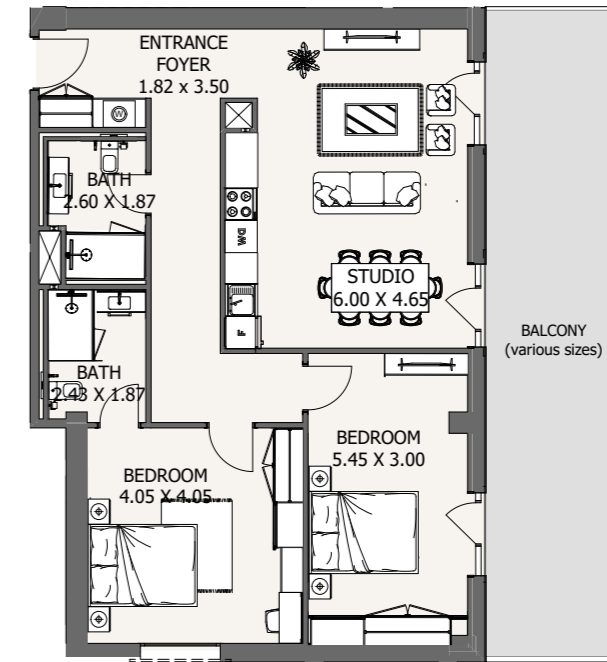
1B | Type A14

Tower E - From G to 9th Floor

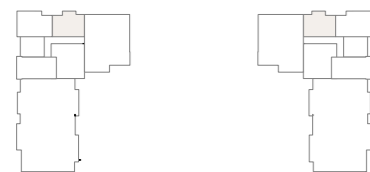


2B | Type A1

Tower C - From G to 9th Floor

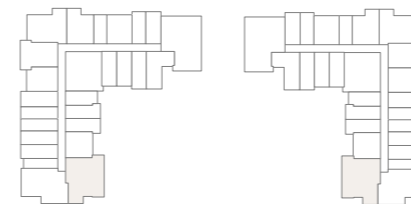


17th, 18th floor



Internal Area	838.9 to 848.6 sq.ft
Outdoor Area	36.6 to 111.4 sq.ft
Total Area	875.5 to 960 sq.ft

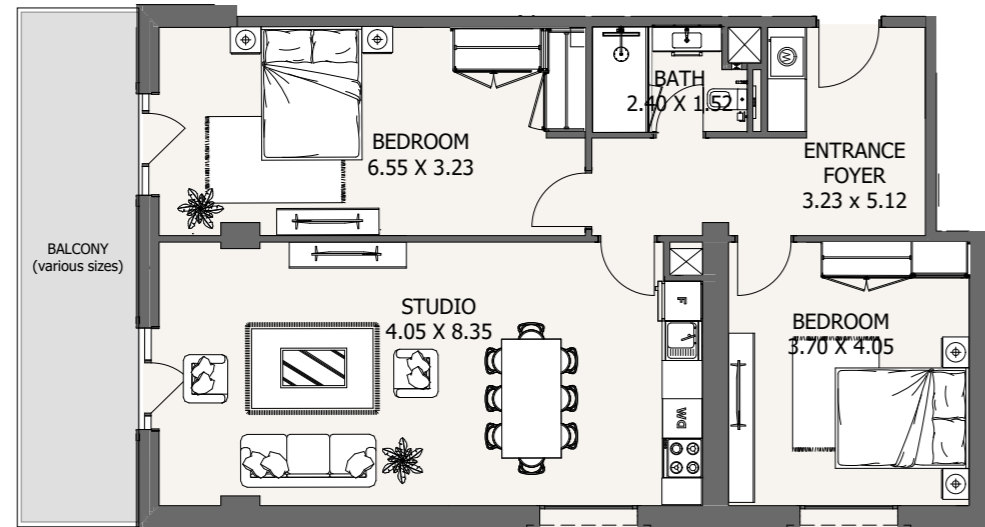
1st, 2nd, 3rd, 4th, 5th, 6th, 7th, 8th, 9th, 10th, 11th floor



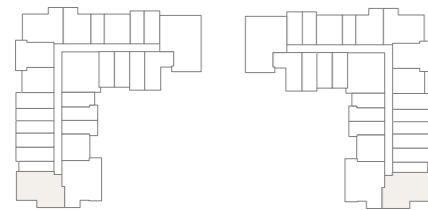
Internal Area	1060.8 to 1060.8 sq.ft
Outdoor Area	120.6 to 617.6 sq.ft
Total Area	1181.3 to 1678.4 sq.ft

2B | Type A2

Tower C - 9th Floor



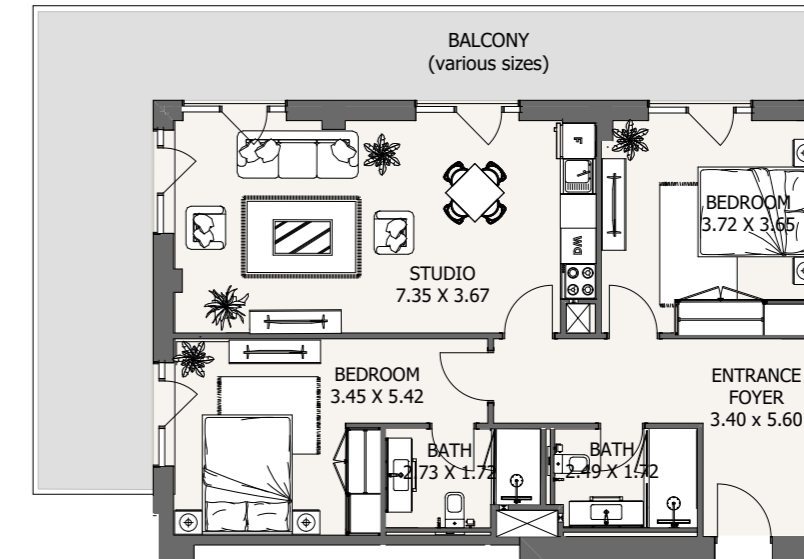
1st, 2nd, 3rd, 4th, 5th floor



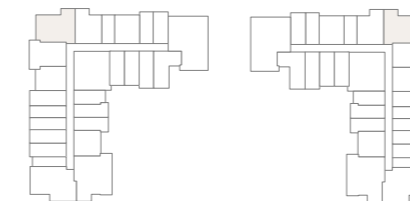
Internal Area	936.5 to 1038.4 sq.ft
Outdoor Area	176.3 to 300.9 sq.ft
Total Area	1214.7 to 1238.5 sq.ft

2B | Type A3

Tower E - From G to 9th Floor



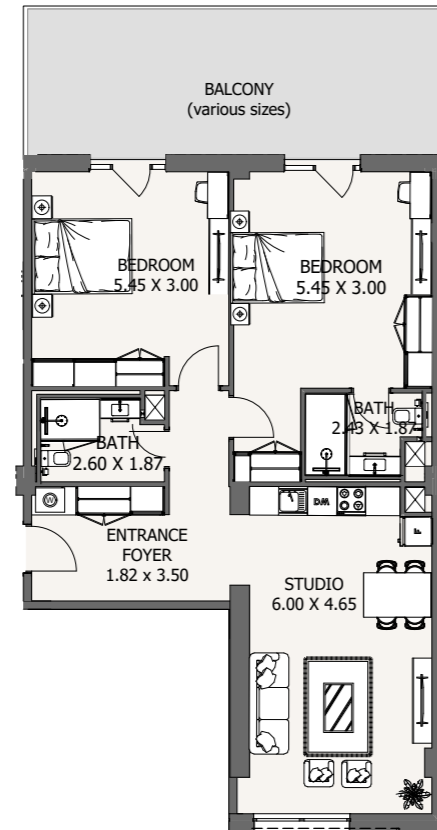
1st, 2nd, 3rd, 4th, 5th, 6th, 7th, 8th, 9th, 10th, 11th, 12th, 13th, 14th, 15th, 16th floor



Internal Area	917.5 to 1016.7 sq.ft
Outdoor Area	118.4 to 361.2 sq.ft
Total Area	1047.7 to 1279.6 sq.ft

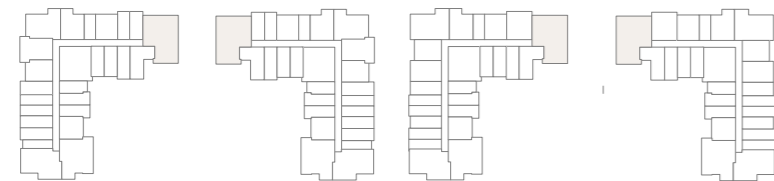
2B | Type A4

Tower E - From G to 9th Floor



1st floor

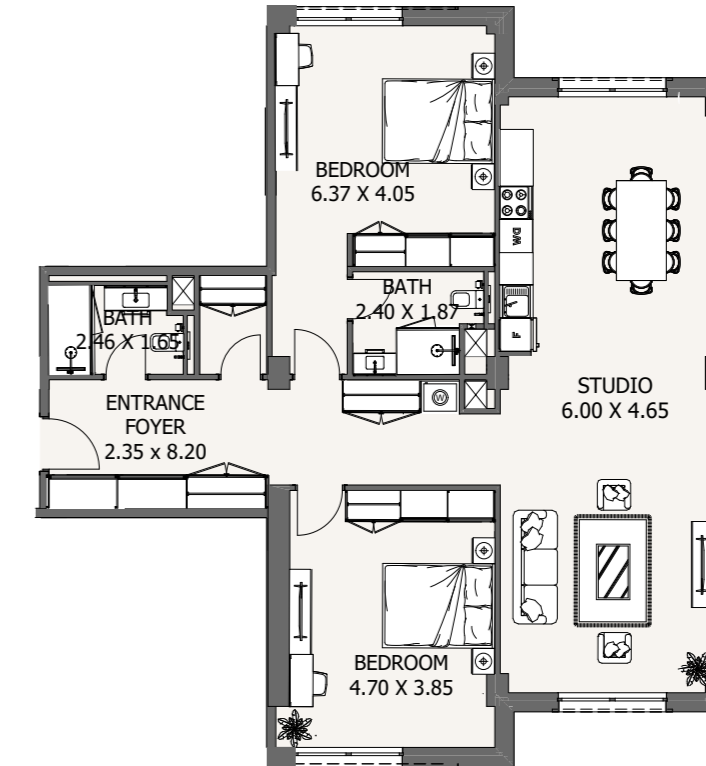
7th, 8th floor



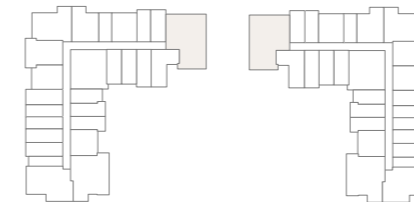
Internal Area	974.7 to 1045.1 sq.ft
Outdoor Area	69 to 258 sq.ft
Total Area	1043.9 to 1303.1 sq.ft

2B | Type A5

Tower E - From G to 9th Floor



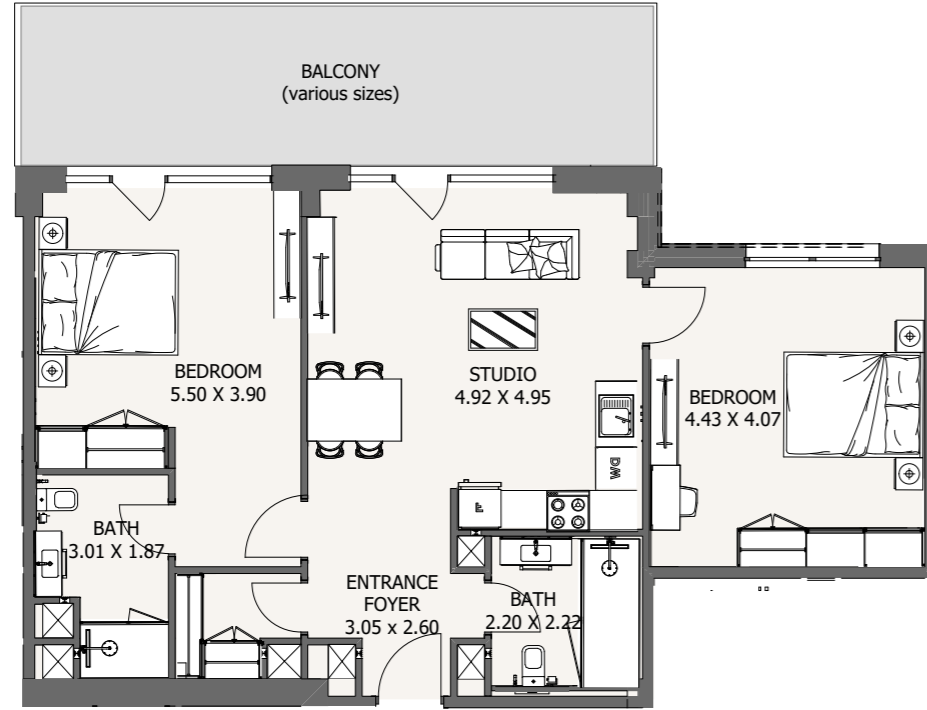
2nd, 3rd, 4th, 5th, 6th floor



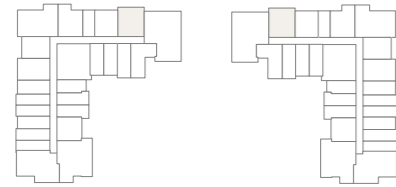
Internal Area	1213.1 to 1317.1 sq.ft
Outdoor Area	105.1 to 411.8 sq.ft
Total Area	1318.1 to 1728.8 sq.ft

2B | Type A6

Tower E - From G to 9th Floor



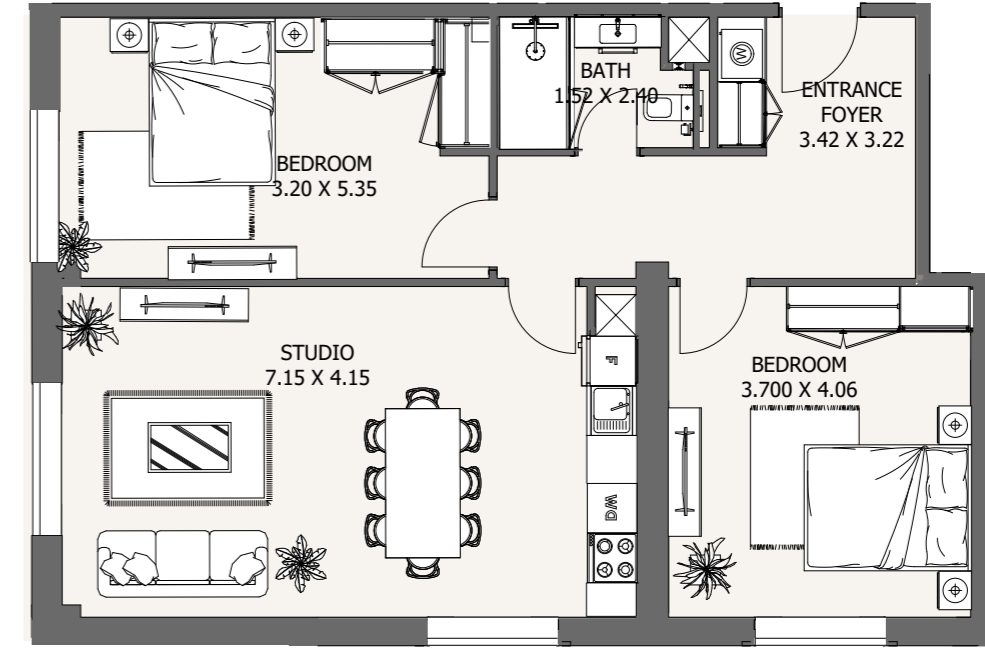
5th, 6th floor



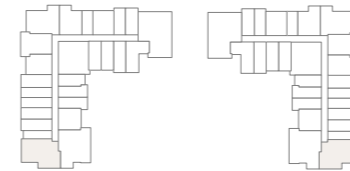
Internal Area	964 to 964 sq.ft
Outdoor Area	116.3 to 116.3 sq.ft
Total Area	1018.3 to 1080.3 sq.ft

2B | Type A7

Tower E - From G to 9th Floor



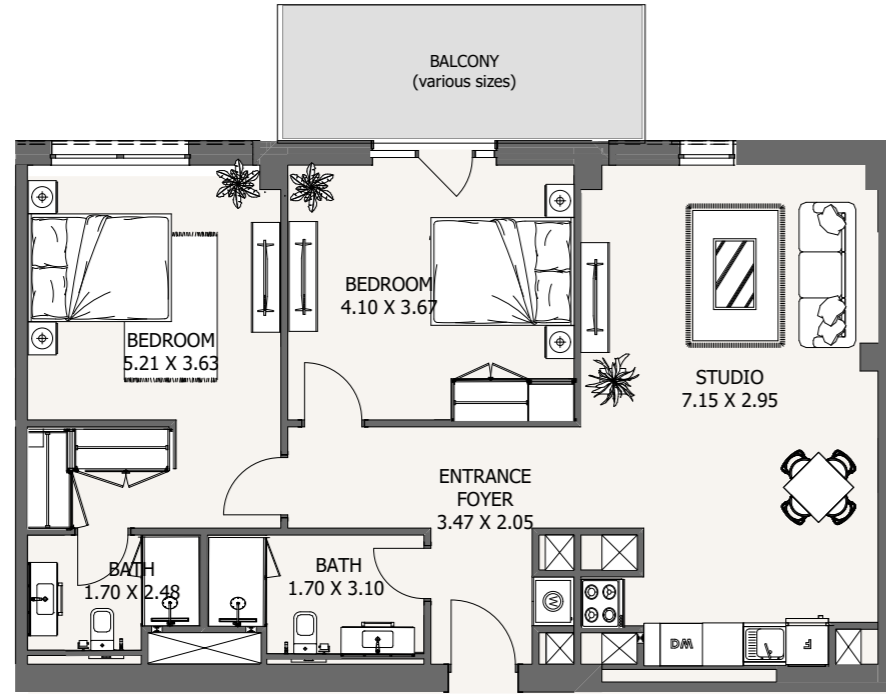
6th, 7th 8th, 9th, 10th, 11th floor



Internal Area	937.5 to 937.5 sq.ft
Outdoor Area	0 sq.ft
Total Area	937.5 to 937.5 sq.ft

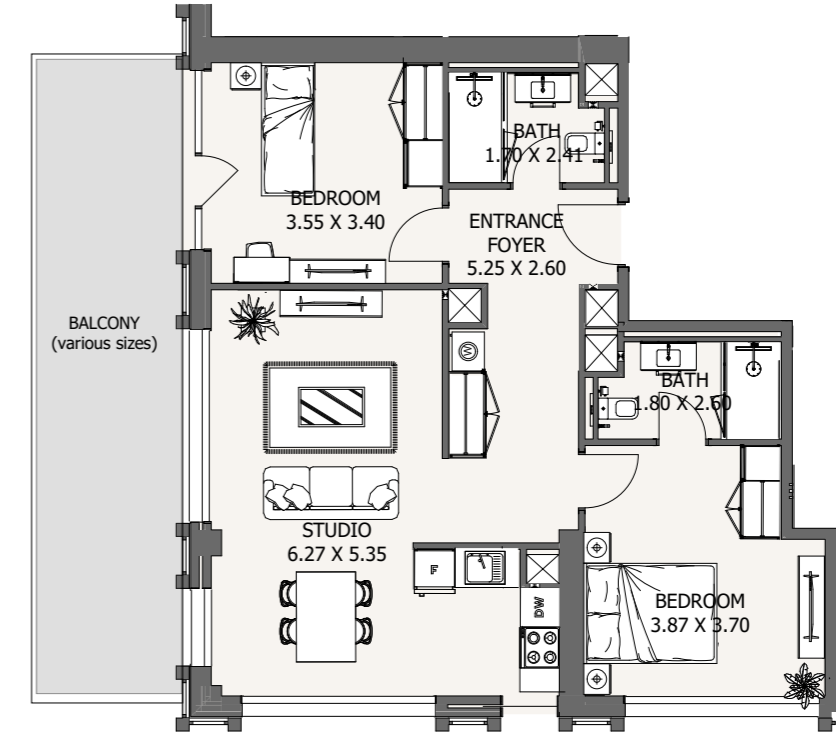
2B | Type A8

Tower E - From G to 9th Floor



2B | Type A9

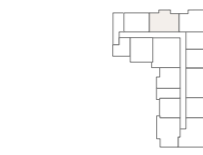
Tower E - From G to 9th Floor



9th, 10th, 11th floor



12th, 13th floor

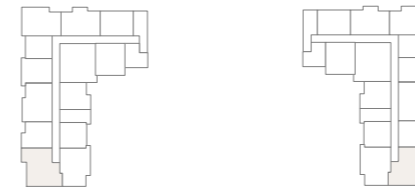


14th, 15th, 16th floor



Internal Area	933.6 to 1028.8 sq.ft
Outdoor Area	59.2 to 106.6 sq.ft
Total Area	992.7 to 1134.3 sq.ft

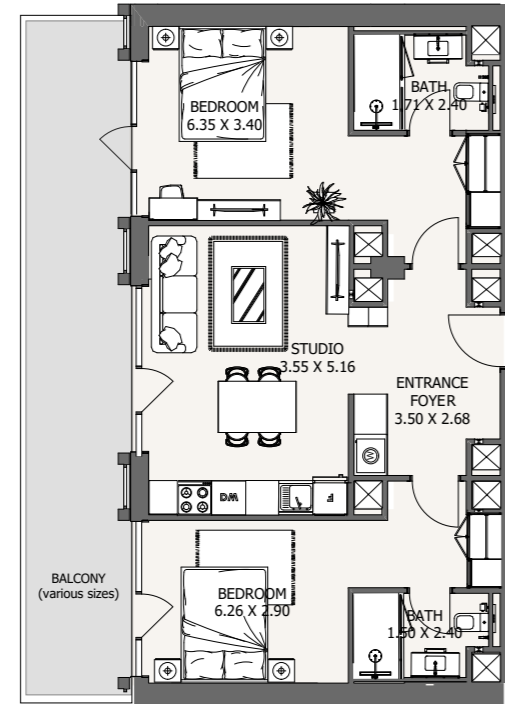
12th, 13th floor



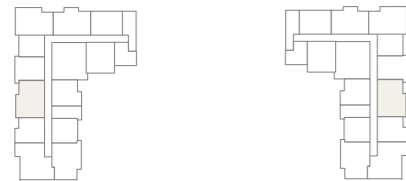
Internal Area	586.2 to 588.2 sq.ft
Outdoor Area	66.3 to 211.2 sq.ft
Total Area	654.6 to 797.4 sq.ft

2B | Type A10

Tower E - From G to 9th Floor



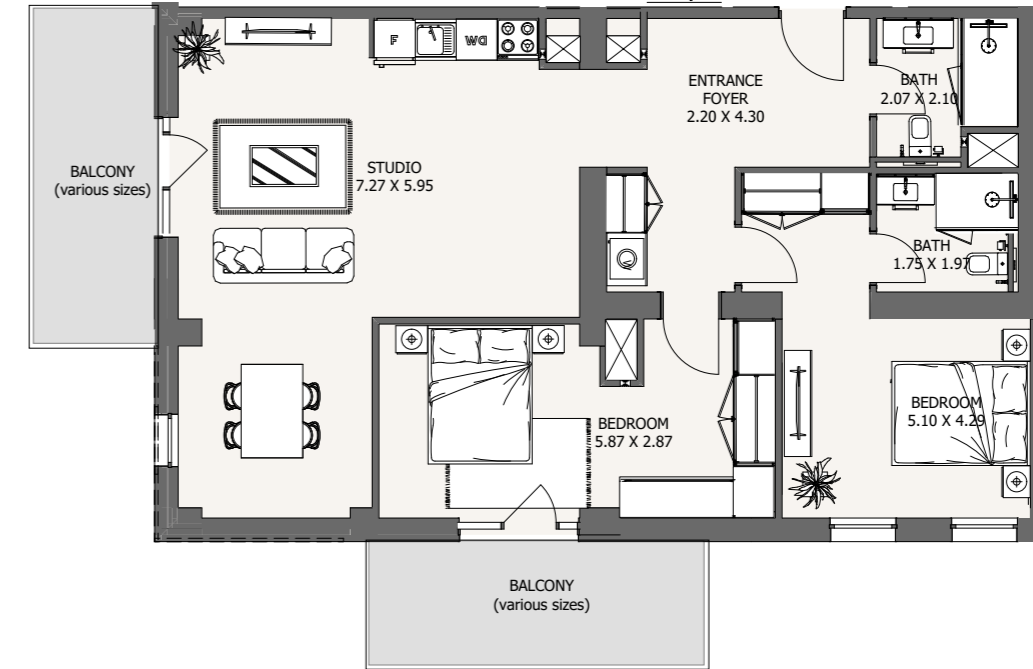
12th, 13th floor



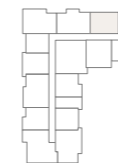
Internal Area	858.6 to 862.2 sq.ft
Outdoor Area	46.2 to 238.3 sq.ft
Total Area	908.4 to 1097 sq.ft

2B | Type A11

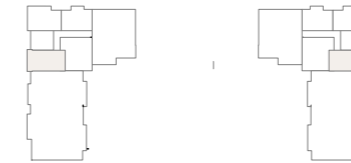
Tower E - From G to 9th Floor



12th, 13th floor



14th, 15th, 16th, 17th, 18th floor



Internal Area	999.5 to 1089.4 sq.ft
Outdoor Area	59.2 to 150 sq.ft
Total Area	1074.9 to 1159.3 sq.ft

Reportage.

Abu Dhabi-UAE | Head Office

Tamouh Tower
28th Floor, Al Reem Island
P.O. Box: 111949
Tollfree: +971 800 77 55 2
info@reportageuae.com

Dubai-UAE

Anantara Business Tower
3rd Floor, Business Bay
P.O. Box: 27446
Tollfree: +971 800 77 55 2
info@reportageuae.com

Cairo-Egypt

Building 217
North Teseen St.
New Cairo
T: +20 12 0008 1190
info@reportageeg.com

Istanbul-Türkiye

Maslak Mh. Sümer Sk.
No:4, İç Kapı No:3, Bodrum Kat,
Maslak Office Building (MOB) Sarıyer
T: +90 530 774 9595
info@reportage.com.tr

Riyadh-KSA

Building No. 3230
Al Aflaj St., Al Suwaidi
P.O. Box 12791
T: +966 11 215 1110
info@reportageuae.com

Moscow-Russia

Yefremova Street 10s1, k4/4
bld sadovye kvartaly
P.O. Box 119048
info@reportagerussia.com

Kampala, Uganda

Plot 4, Philip Road
Near German Embassy
Kololo, Kampala, Uganda
+256 756 111 434 | +256 763 331 572
info@reportageug.com

Lahore - Pakistan

Plaza No. 185, Broadway
Commercial phase 8, DHA Lahore
+92 42 111 999 911
Info@reportageempire.com

ISLAMABAD Pakistan

Building No. 14, Sector-F,
Near Giga Mall, Phase 2,
DHA, Islamabad.
+92 42 111 999 911
Info@reportageempire.com

Kigali, Rwanda

KG 334 ST 10, Nyarutarama,
Kigali, Rwanda
+250738532168 | +250794100607
info@reportagerw.com

For more information, visit reportageuae.com
or call 800 77 55 2 | +971 50 244 1078



Legal Disclaimer:

The information contained in this brochure is confidential and is for the exclusive use of the recipient. This brochure may not be reproduced, distributed, delivered, or furnished to any person without the prior written approval of Reportage Properties. No representation or warranty (expressed or implied) is made or can be given with respect to the accuracy or completeness of the information herein, or that any future offer of units or apartments in the project will conform to the terms described herein. Nothing in this leaflet should be construed as financial, legal, tax or regulatory advice. All accessories such as electronics, furniture, white goods, decorative elements and so forth included in this brochure are not part of the standard unit and used for illustration purposes only. All plans, layouts, pictures, renderings, information and details included in this brochure are indicative only and may change at any time up to the final 'as built' status in accordance with final designs of the project and regulatory approvals and planning permissions.



Reportage.