

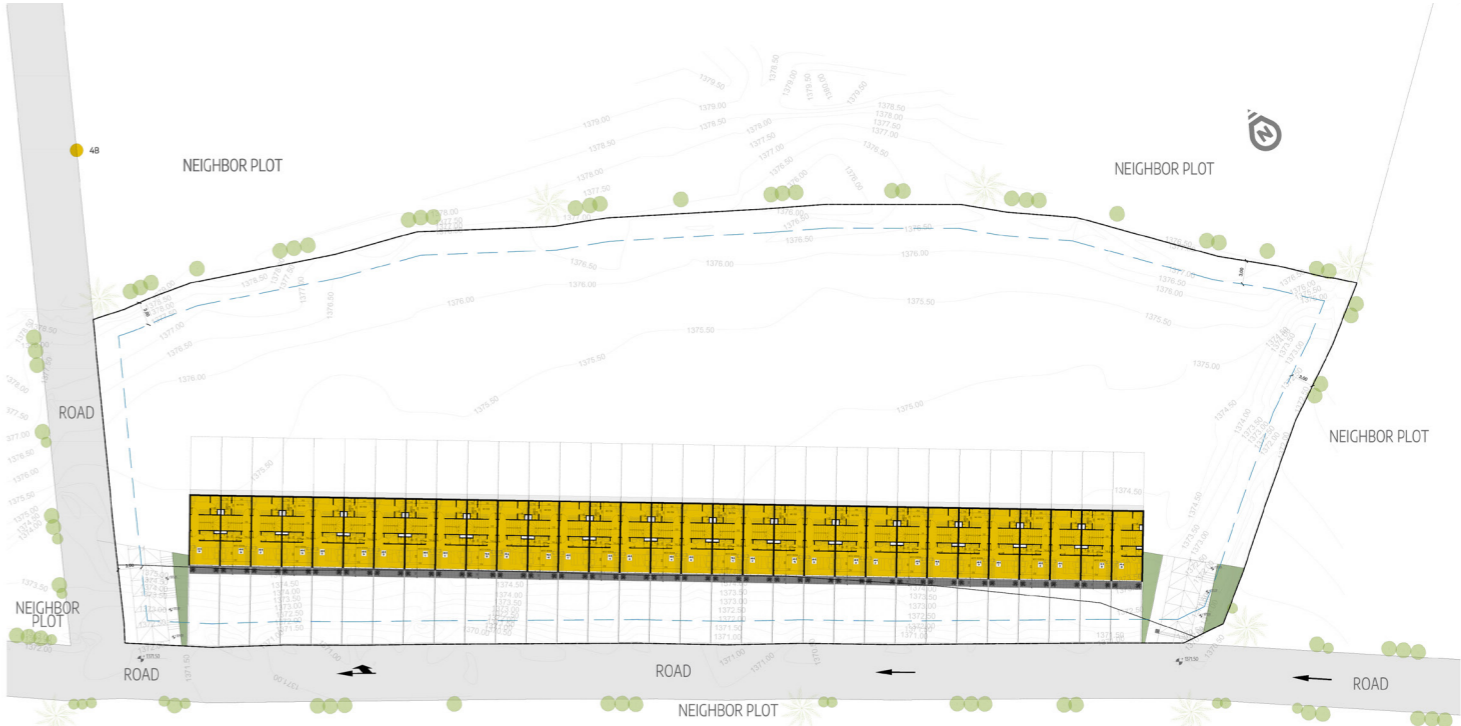


JASMINE
HILLS

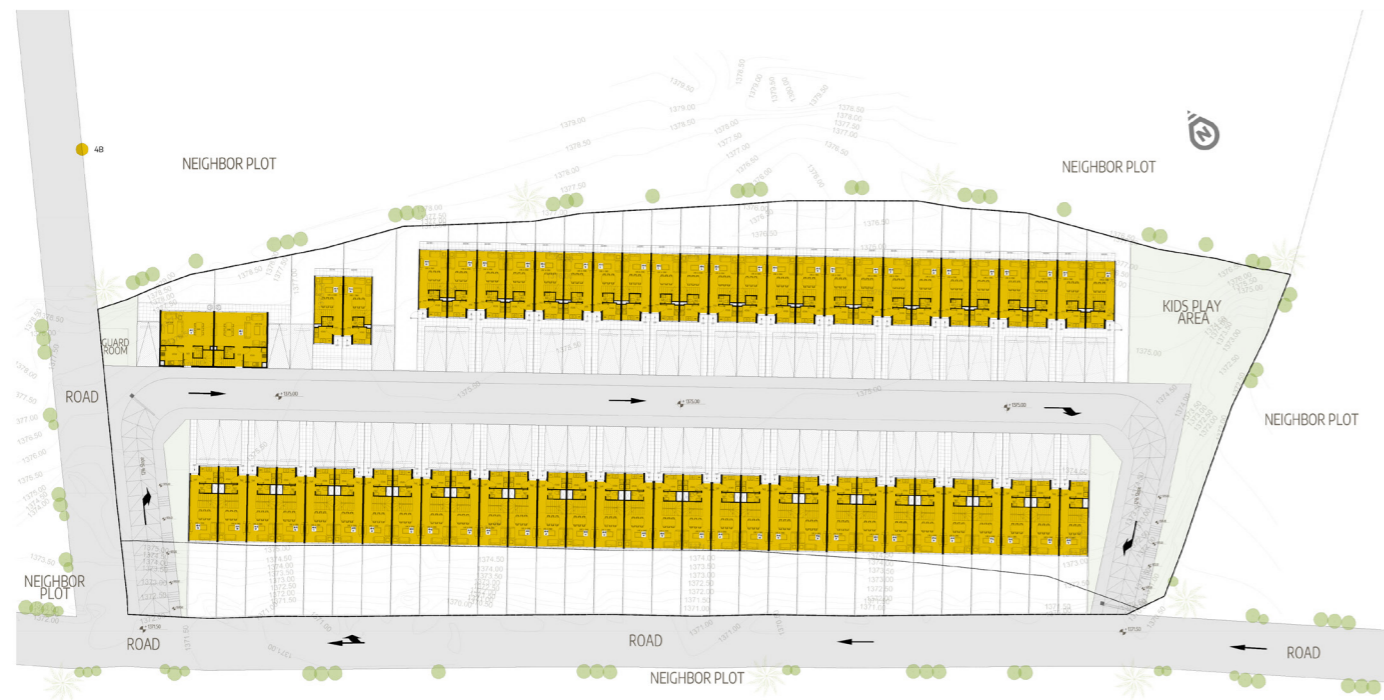


Floor Plans

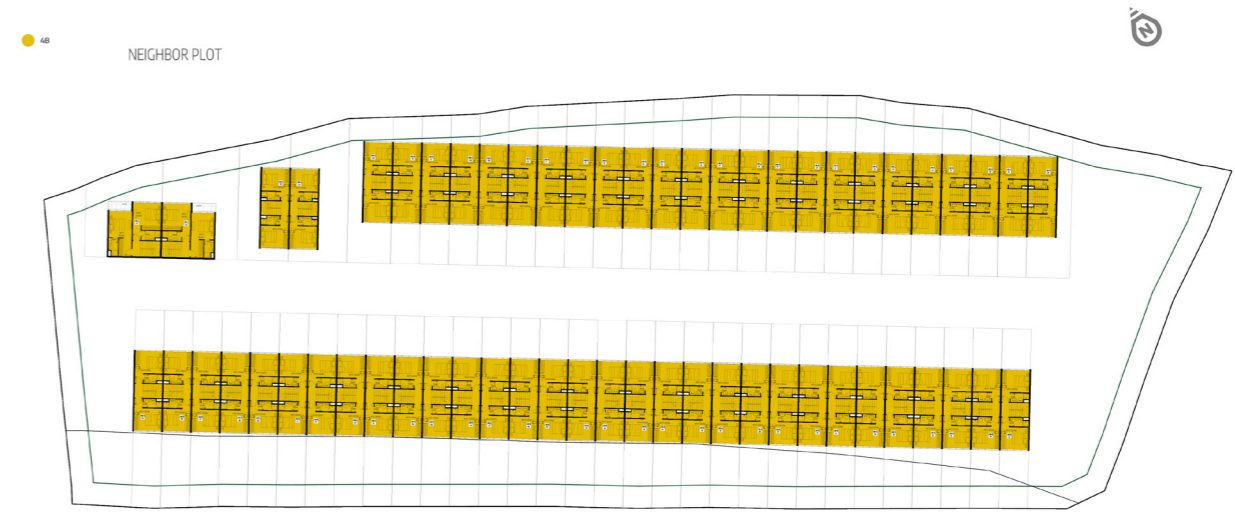
TRANQUILITY AND MODERNITY HARMONIZE



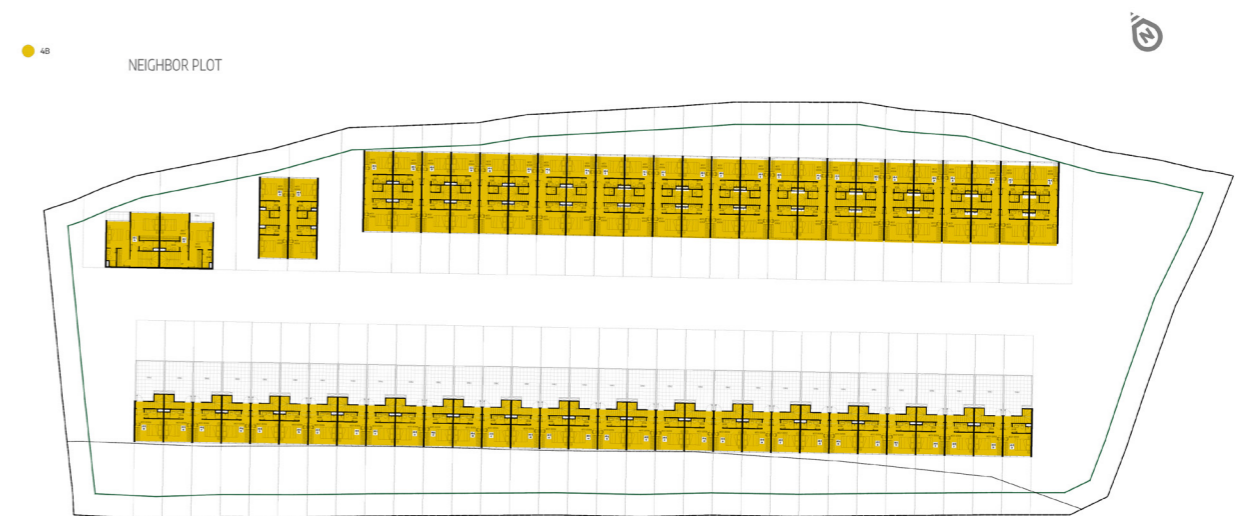
Basement Floor Plan



Ground Floor Plan



First Floor Plan



Second Floor Plan



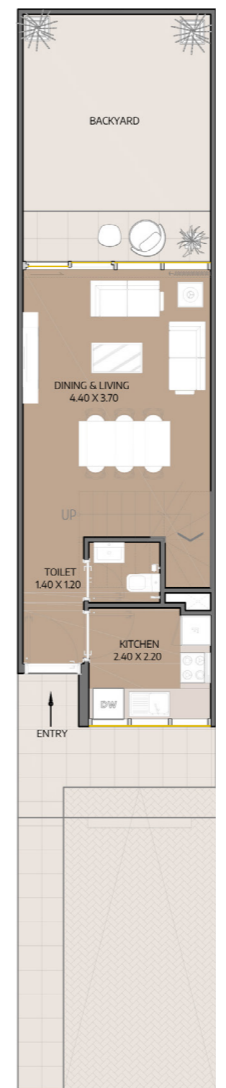
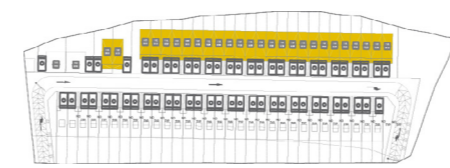
UNIT MIX

Type A
4 Bedrooms
26 units

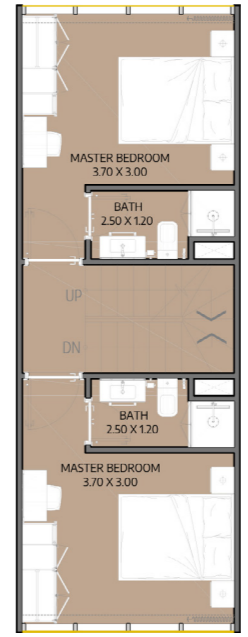
Type B
4 Bedrooms
31 units

Type C
4 Bedrooms
2 units

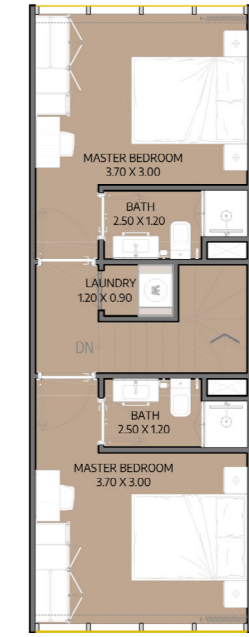
59
Total No. of Units



Ground Floor



First Floor



Second Floor

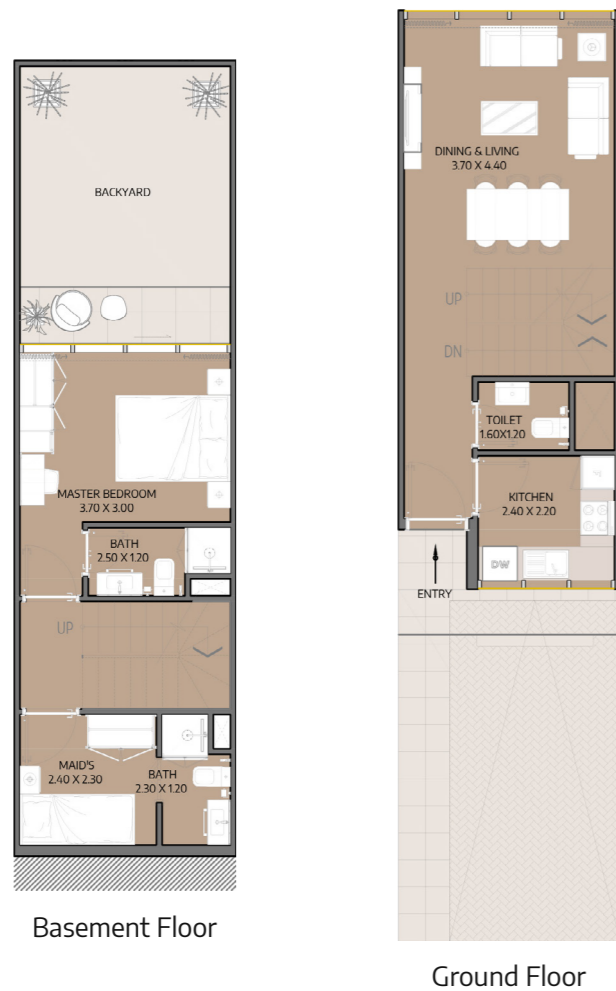
Townhouse 4B | Type A

Internal Area	1284.46 sq.ft
Outdoor Area	460.11 to 1098.65 sq.ft
Total Area	1744.57 to 2383.11 sq.ft

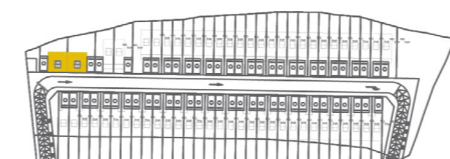
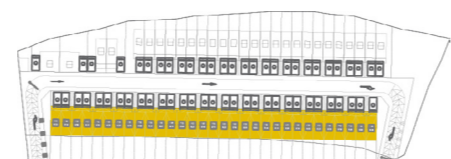
All drawings and dimensions are approximate. Drawings are not to scale and are subject to change without notice. The developer reserves the right to make re-visons. The units are measured at typical floors in the building and columns may vary in size depending on the floor level. The furnishing and accessories shown are for representation only. The availability, length and width of the balcony varies depending on which floor and which orientation the unit is located within the building. There will be slight differences in the internal areas between the same unit types depending on the shaft sizes that go through the units.

Townhouse 4B | Type B

Internal Area	1542.79 sq.ft
Outdoor Area	809.49 to 912.62 sq.ft
Total Area	2352.28 to 2455.41 sq.ft



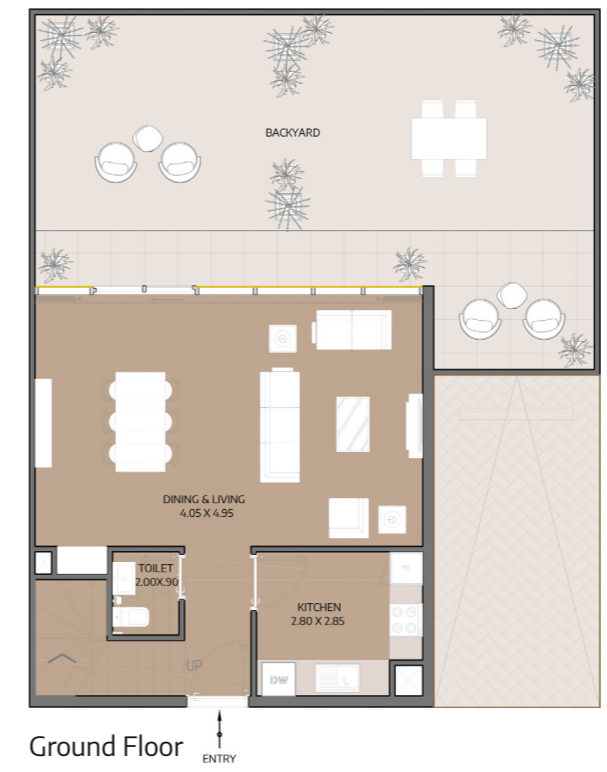
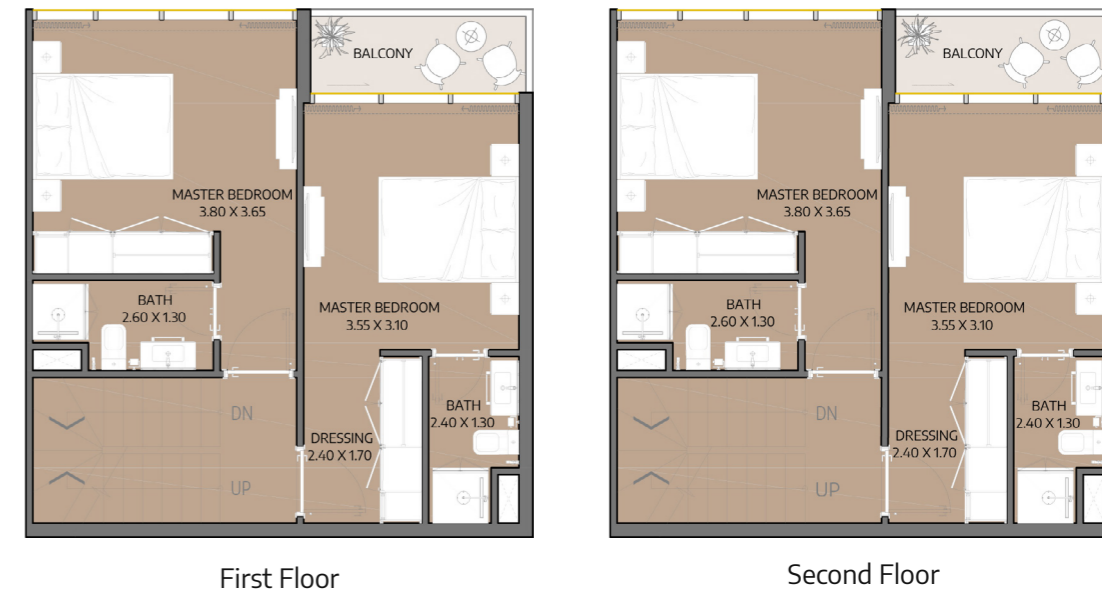
All drawings and dimensions are approximate. Drawings are not to scale and are subject to change without notice. The developer reserves the right to make re-visons. The units are measured at typical floors in the building and columns may vary in size depending on the floor level. The furnishing and accessories shown are for representation only. The availability, length and width of the balcony varies depending on which floor and which orientation the unit is located within the building. There will be slight differences in the internal areas between the same unit types depending on the shaft sizes that go through the units.



All drawings and dimensions are approximate. Drawings are not to scale and are subject to change without notice. The developer reserves the right to make re-visons. The units are measured at typical floors in the building and columns may vary in size depending on the floor level. The furnishing and accessories shown are for representation only. The availability, length and width of the balcony varies depending on which floor and which orientation the unit is located within the building. There will be slight differences in the internal areas between the same unit types depending on the shaft sizes that go through the units.

Townhouse 4B | Type C

Internal Area	1695.53 sq.ft
Outdoor Area	774.49 to 1066.09 sq.ft
Total Area	2470.02 to 2761.62 sq.ft



Abu Dhabi, UAE | Head Office

Tamouh Tower
28th Floor, Al Reem Island
P.O. Box: 111949
Tollfree: +971 800 77 55 2
info@reportageuae.com

Dubai, UAE

Anantara Business Tower
3rd Floor, Business Bay
P.O. Box: 27446
Tollfree: +971 800 77 55 2
info@reportageuae.com

Riyadh, KSA

Building No. 3230
Al Aflaj St., Al Suwaidi
P.O. Box 12791
T: +966 11 215 1110
info@reportageksa.com

Cairo, Egypt

Building 217
North Teseen St.
New Cairo
T: +20 12 0008 1190
info@reportageeg.com

Istanbul, Türkiye

Maslak Mh. Sümer Sk.
No:4, iç Kapı No:3, Bodrum Kat,
Maslak Office Building (MOB) Sarıyer
T: +90 530 774 9595
info@reportage.com.tr

Moscow, Russia

Yefremova Street 10s1, k4/4
bld sadovye kvartaly
P.O. Box 119048
info@reportagerussia.com

Kampala, Uganda

Plot 4, Philip Road
Near German Embassy
Kololo, Kampala, Uganda
T: +256 756 111 434 | +256 763 331 572
info@reportageug.com

Lahore, Pakistan

Plaza No. 185, Broadway
Commercial phase 8, DHA Lahore
T: +923309991111
Info@reportageempire.com



Kigali, Rwanda

KG 334 ST 10, Nyarutarama, Kigali, Rwanda
T: +250738532168 | +250794100607
info@reportagerw.com