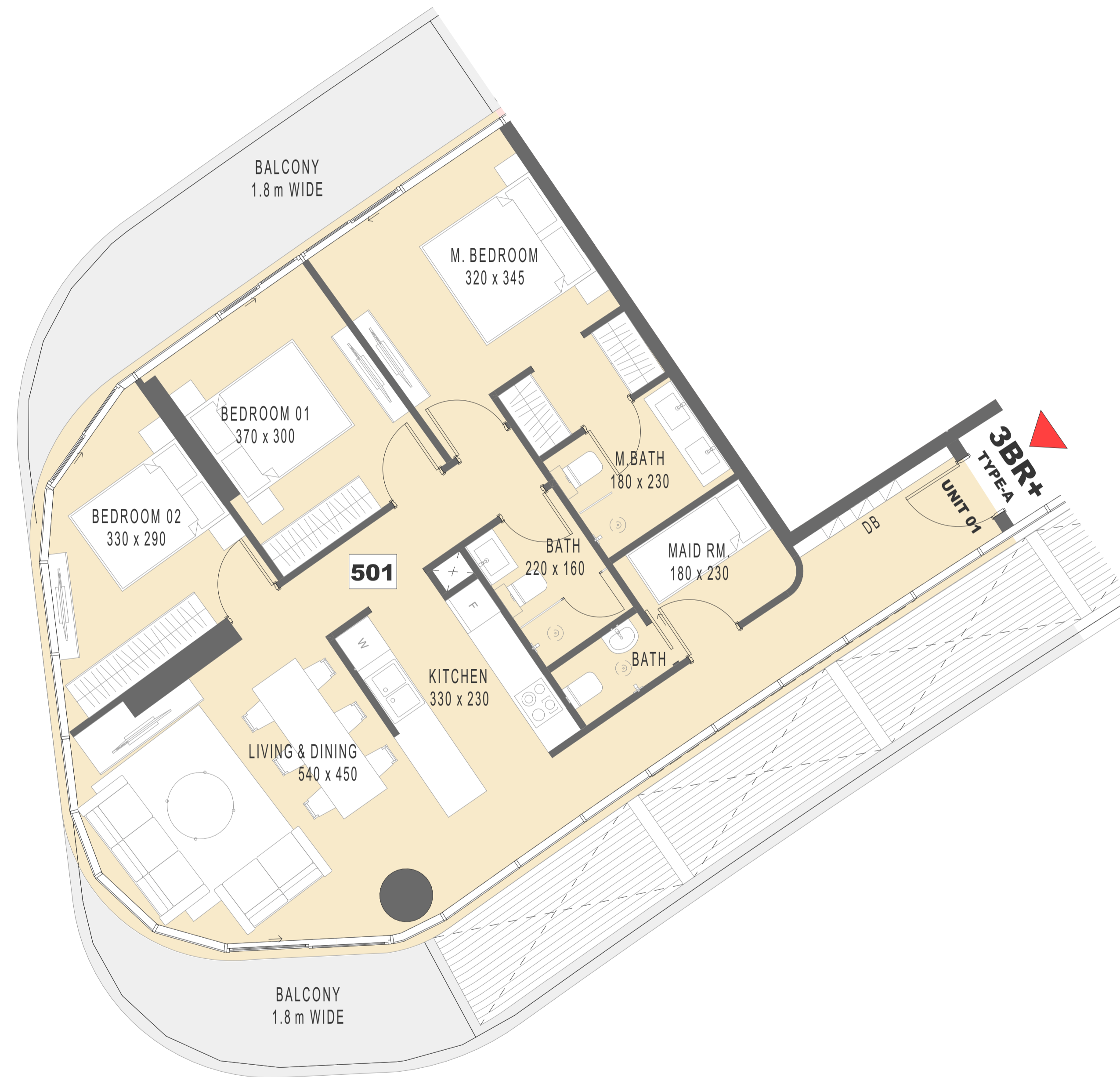


KEY PLAN - 4th Floor



KEY PLAN - Typical Floor



3BHK | Type A

4th Floor, Typical Floor

Internal Area	105.65 sqm.
Outdoor Area	43.62 sqm. , 28.47 sqm.
Total Area	149.27 sqm. , 134.12 sqm.

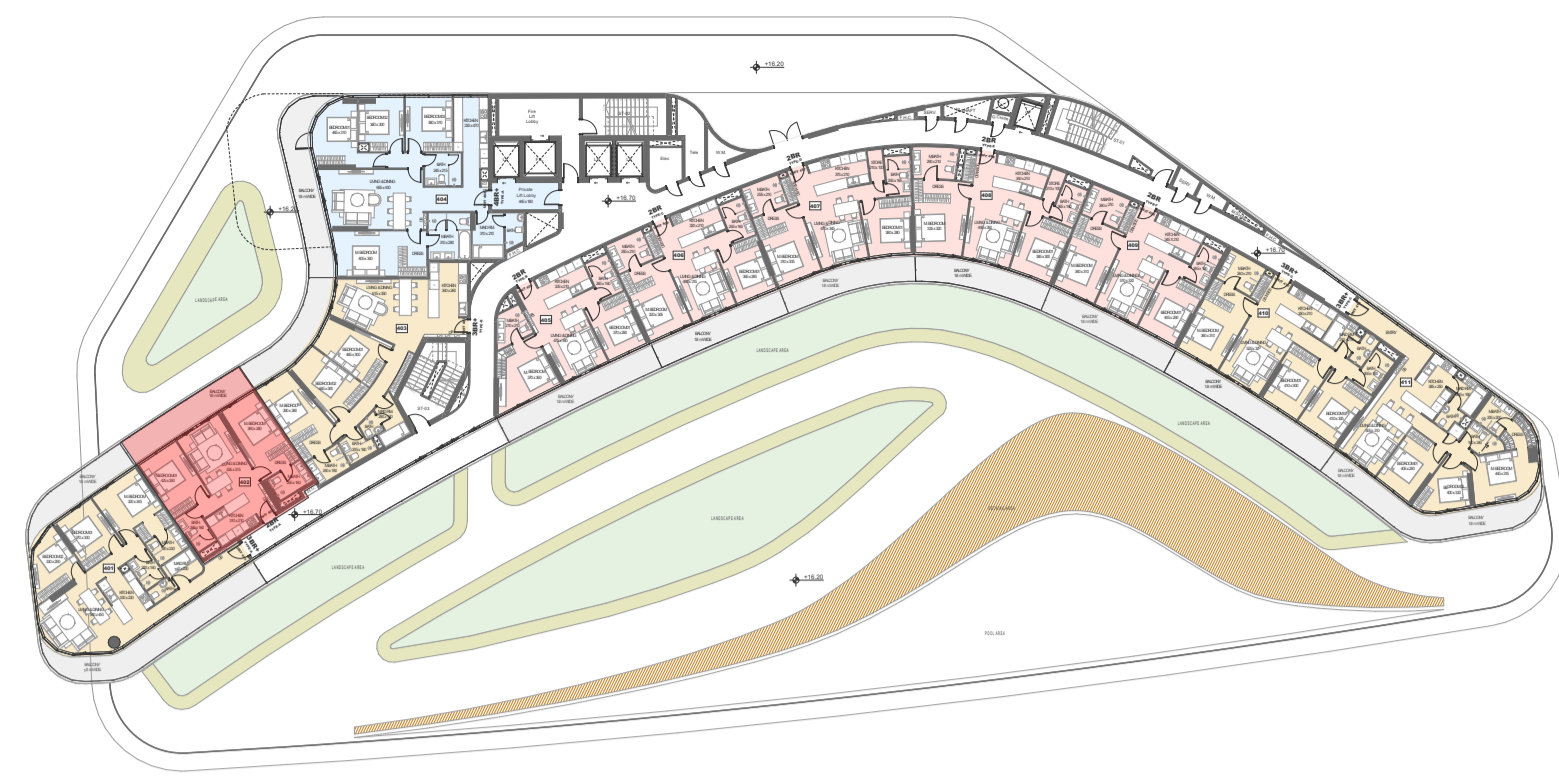
Note: Outdoor Area varies.

MARLIN 2

17-02-2025

Revision 01

All drawings and dimensions are approximate. Drawings are not to scale and are subject to change without notice. The developer reserves the right to make revisions. The units are measured at typical floors in the building and columns may vary in size depending on the floor level. The furnishing and accessories shown are for representation only. The availability, length and width of the balcony varies depending on which floor and which orientation the unit is located within the building. There will be slight differences in the internal areas between the same unit types depending on the shaft sizes that go through the units.



KEY PLAN - 4th Floor



KEY PLAN - Typical Floor



2BHK | Type A

4th Floor, Typical Floor

Internal Area	71.39 sqm.
Outdoor Area	16.84 sqm. , 12.15 sqm.
Total Area	88.23 sqm. , 83.54 sqm.

Note: Outdoor Area varies.

MARLIN 2

17-02-2025

Revision 01

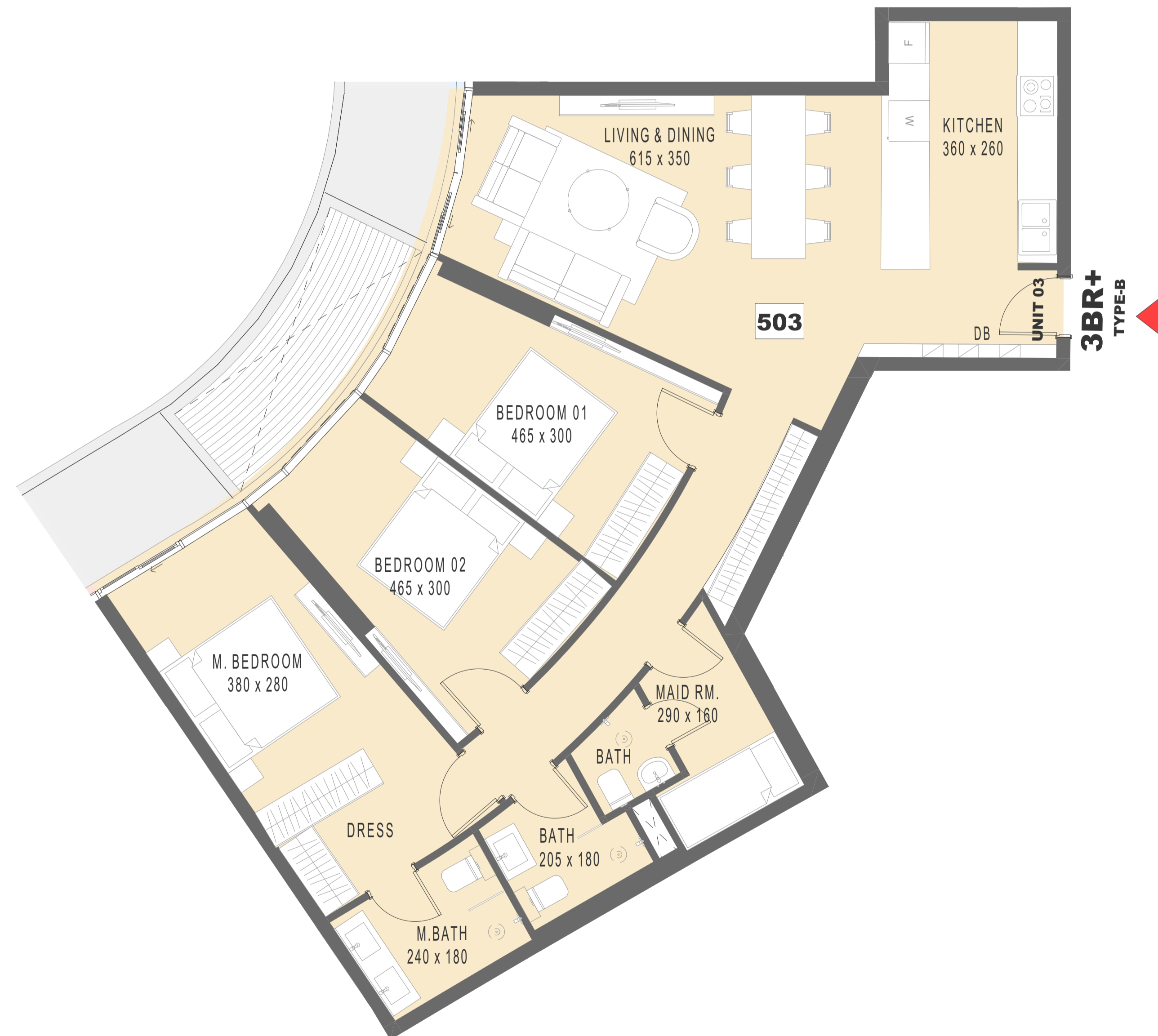
All drawings and dimensions are approximate. Drawings are not to scale and are subject to change without notice. The developer reserves the right to make revisions. The units are measured at typical floors in the building and columns may vary in size depending on the floor level. The furnishing and accessories shown are for representation only. The availability, length and width of the balcony varies depending on which floor and which orientation the unit is located within the building. There will be slight differences in the internal areas between the same unit types depending on the shaft sizes that go through the units.



KEY PLAN - 4th Floor



KEY PLAN - Typical Floor



3BHK | Type B

4th Floor, Typical Floor

Internal Area	111.11 sqm.
Outdoor Area	14.67 sqm. , 8.97 sqm.
Total Area	125.78 sqm. , 120.08 sqm.

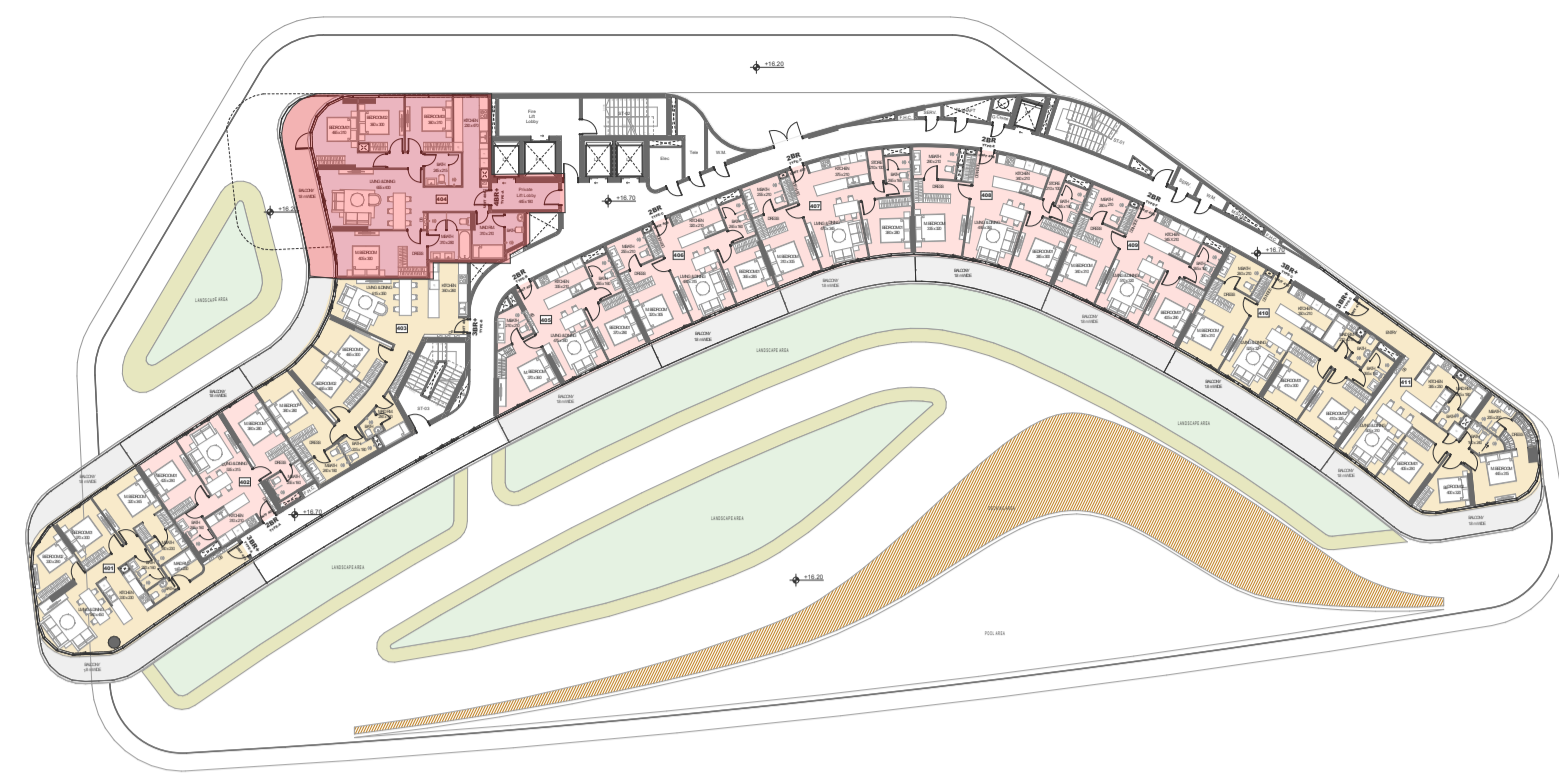
Note: Outdoor Area varies.

MARLIN 2

17-02-2025

Revision 01

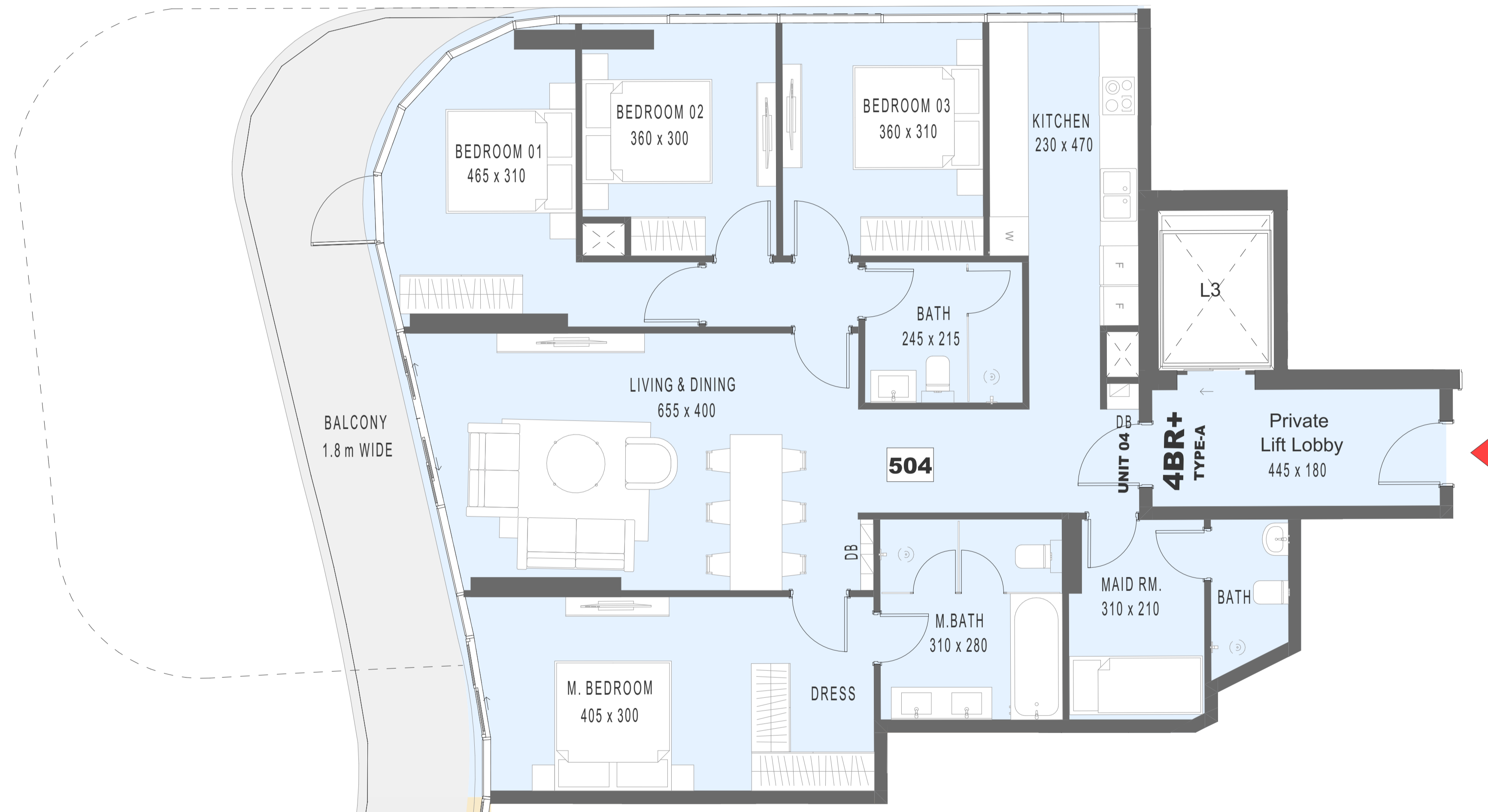
All drawings and dimensions are approximate. Drawings are not to scale and are subject to change without notice. The developer reserves the right to make revisions. The units are measured at typical floors in the building and columns may vary in size depending on the floor level. The furnishing and accessories shown are for representation only. The availability, length and width of the balcony varies depending on which floor and which orientation the unit is located within the building. There will be slight differences in the internal areas between the same unit types depending on the shaft sizes that go through the units.



KEY PLAN - 4th Floor



KEY PLAN - Typical Floor



4BHK | Type A

4th Floor, Typical Floor

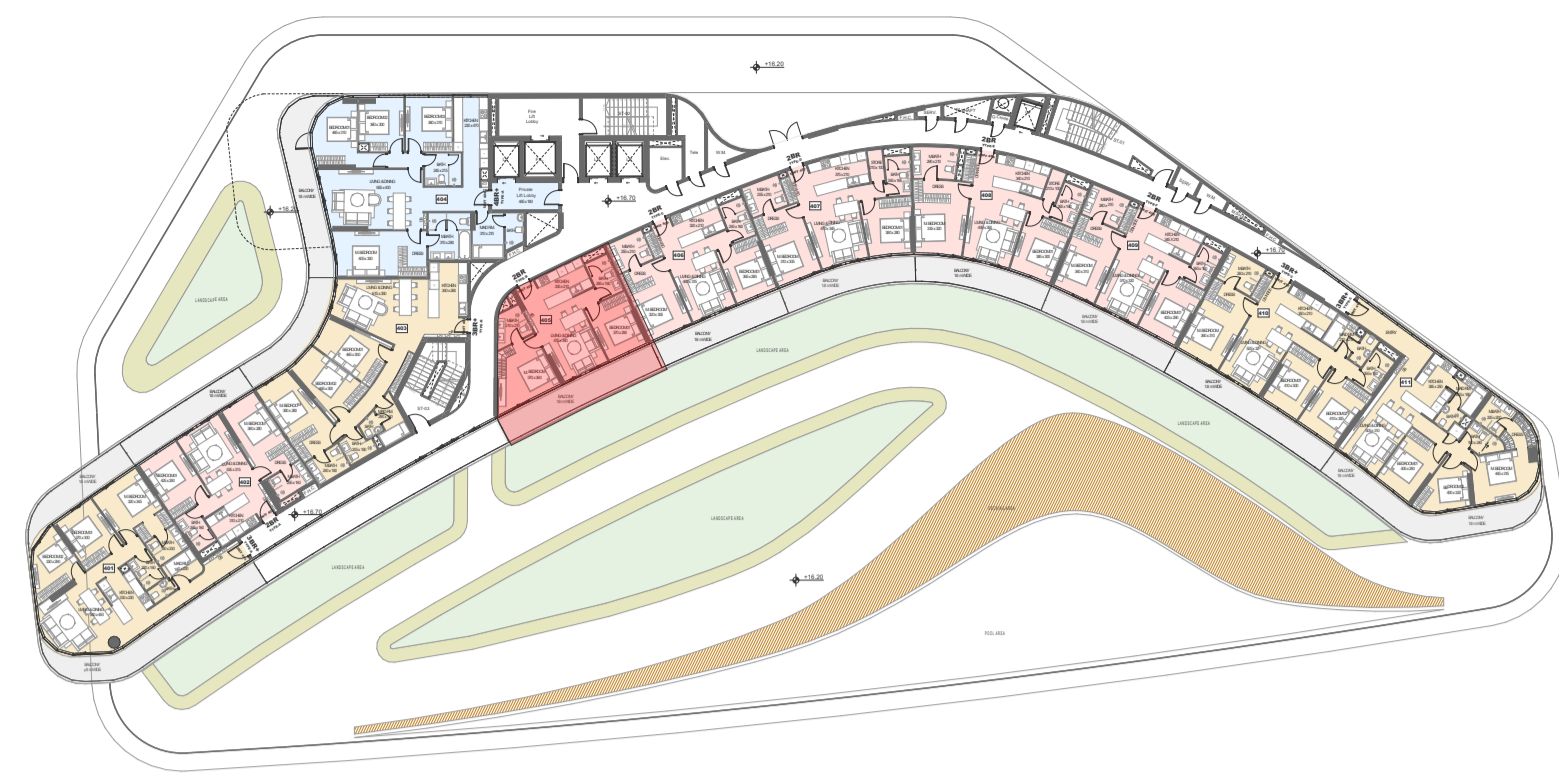
Internal Area	148.41 sqm.
Outdoor Area	23.41 sqm.
Total Area	171.82 sqm.

MARLIN 2

17-02-2025

Revision 01

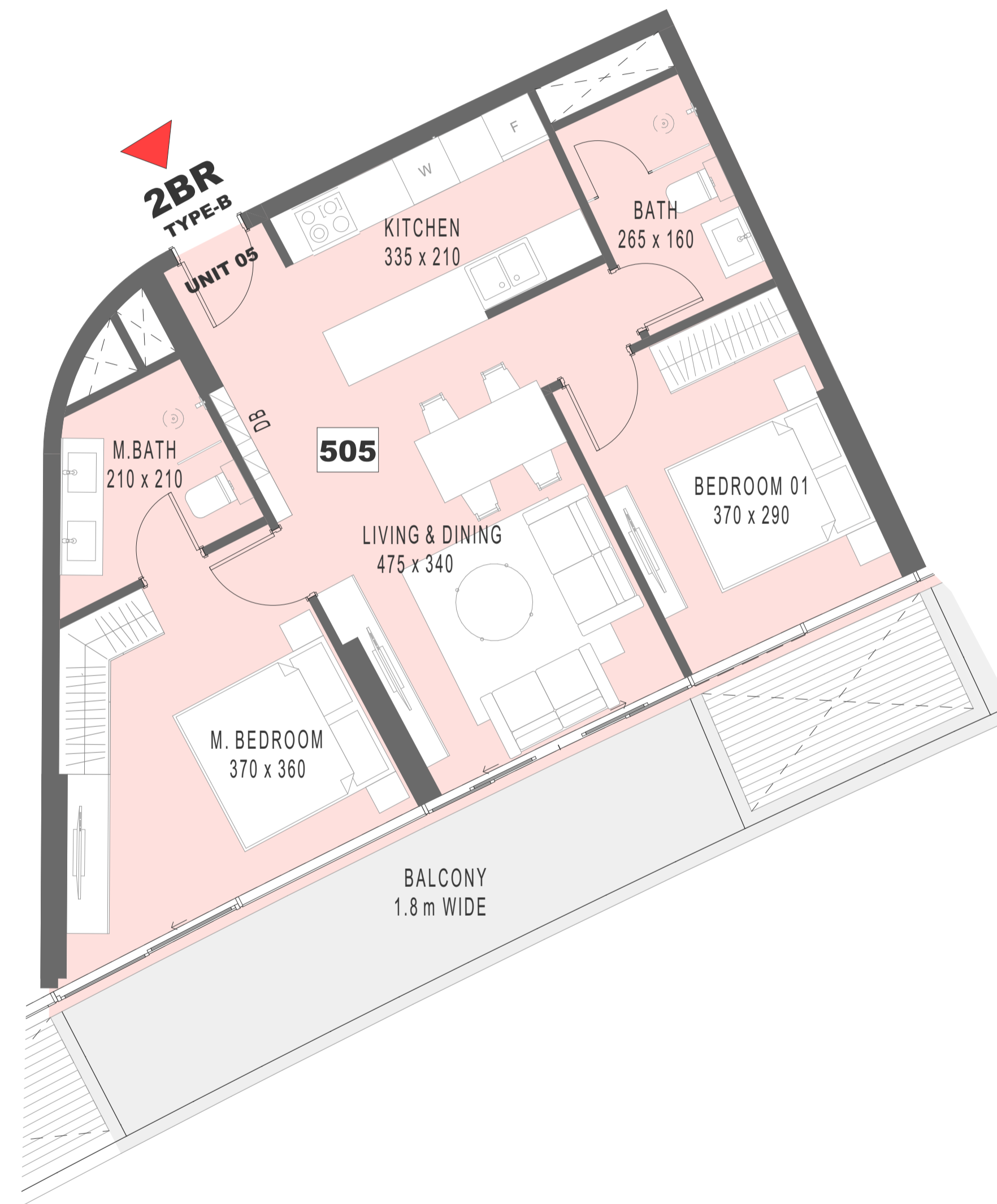
All drawings and dimensions are approximate. Drawings are not to scale and are subject to change without notice. The developer reserves the right to make revisions. The units are measured at typical floors in the building and columns may vary in size depending on the floor level. The furnishing and accessories shown are for representation only. The availability, length and width of the balcony varies depending on which floor and which orientation the unit is located within the building. There will be slight differences in the internal areas between the same unit types depending on the shaft sizes that go through the units.



KEY PLAN - 4th Floor



KEY PLAN - Typical Floor



2BHK | Type B

4th Floor, Typical Floor

Internal Area	68.42 sqm.
Outdoor Area	20.43 sqm. , 16.15 sqm.
Total Area	88.85 sqm. , 84.57 sqm.

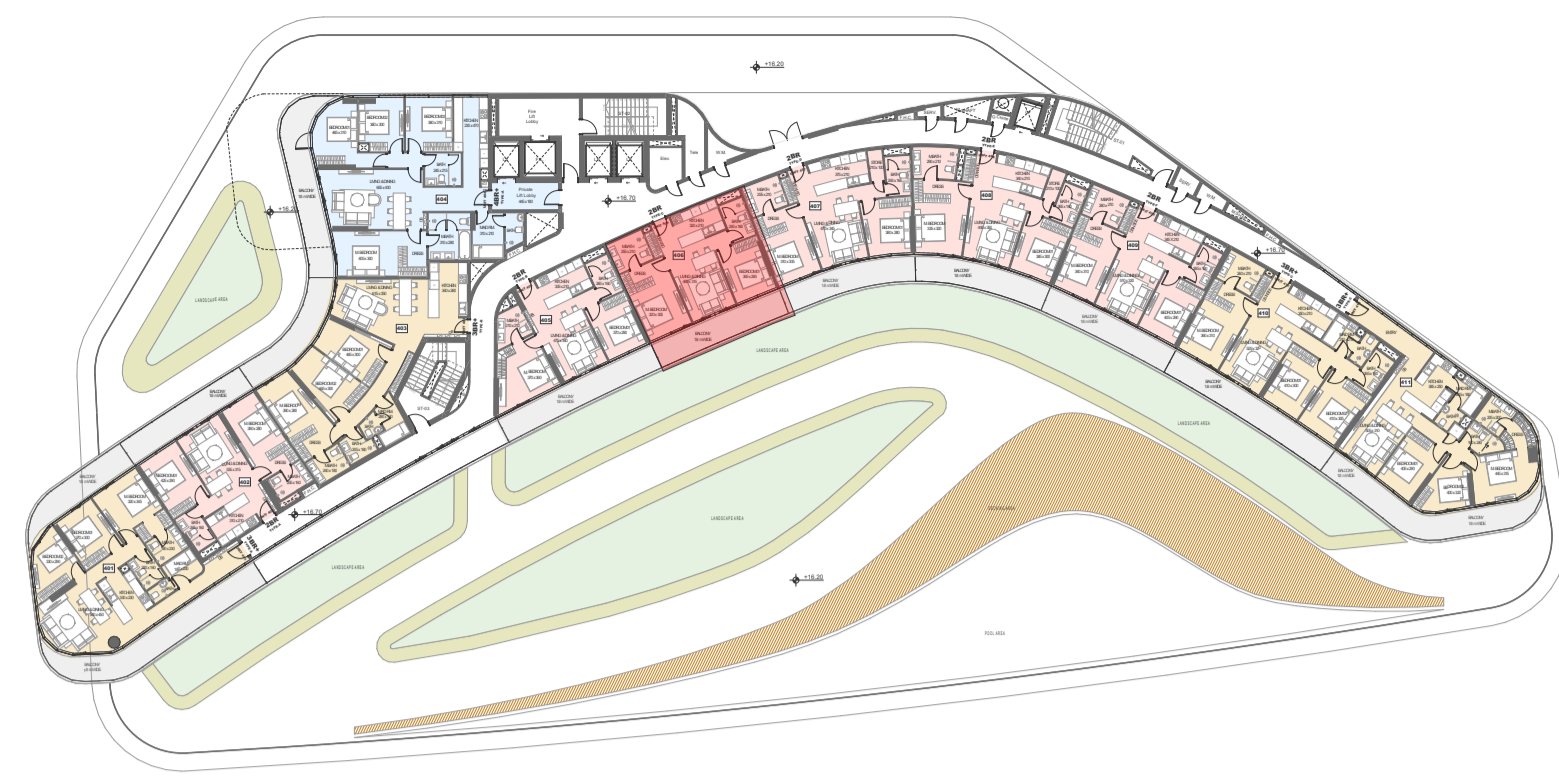
Note: Outdoor Area varies.

MARLIN 2

17-02-2025

Revision 01

All drawings and dimensions are approximate. Drawings are not to scale and are subject to change without notice. The developer reserves the right to make revisions. The units are measured at typical floors in the building and columns may vary in size depending on the floor level. The furnishing and accessories shown are for representation only. The availability, length and width of the balcony varies depending on which floor and which orientation the unit is located within the building. There will be slight differences in the internal areas between the same unit types depending on the shaft sizes that go through the units.



KEY PLAN - 4th Floor



KEY PLAN - Typical Floor



2BHK | Type C

4th Floor, Typical Floor

Internal Area	68.40 sqm.
Outdoor Area	16.43 sqm. , 12.25 sqm.
Total Area	84.83 sqm. , 80.65 sqm.

Note: Outdoor Area varies.

MARLIN 2

17-02-2025

Revision 01

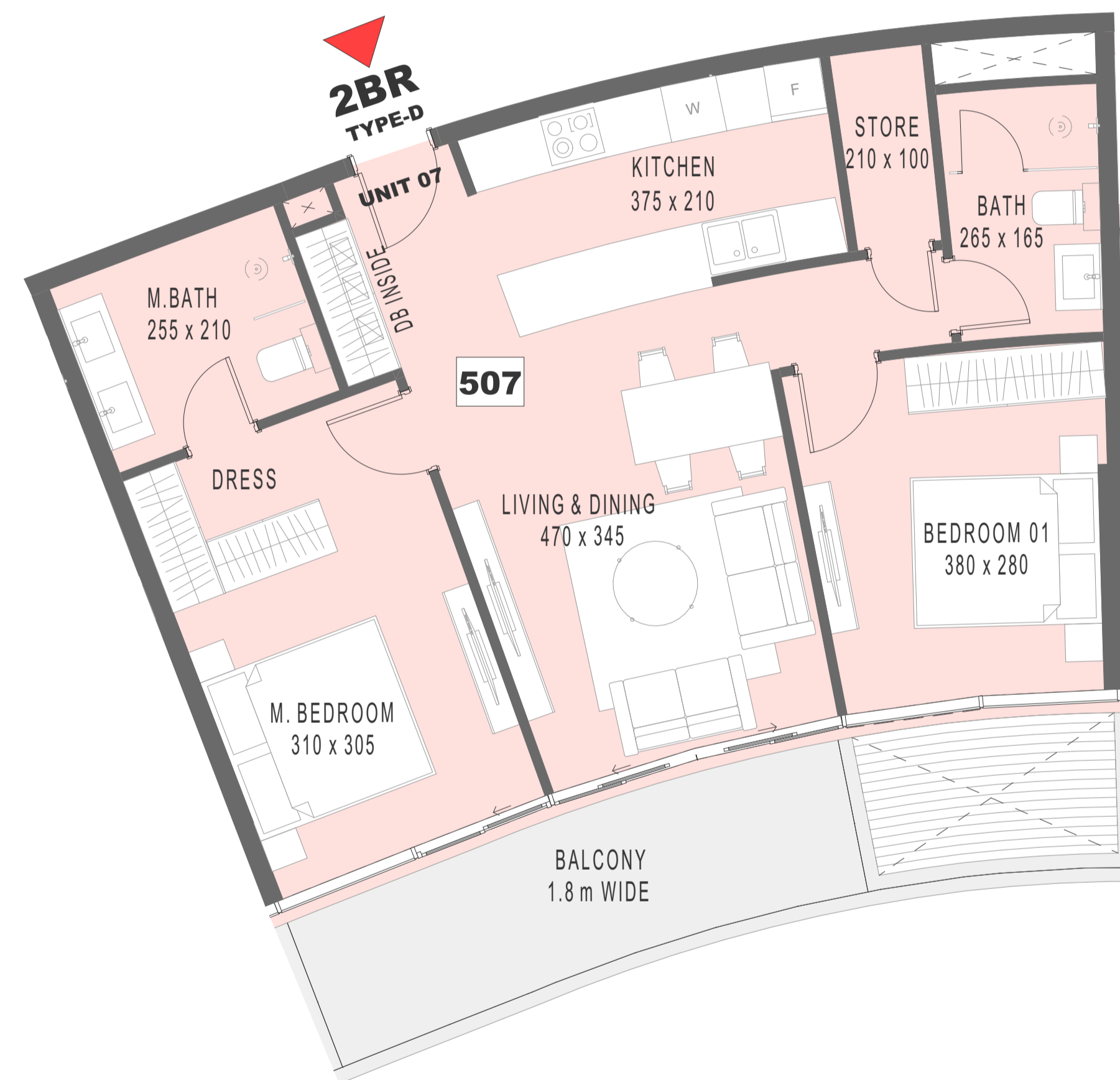
All drawings and dimensions are approximate. Drawings are not to scale and are subject to change without notice. The developer reserves the right to make revisions. The units are measured at typical floors in the building and columns may vary in size depending on the floor level. The furnishing and accessories shown are for representation only. The availability, length and width of the balcony varies depending on which floor and which orientation the unit is located within the building. There will be slight differences in the internal areas between the same unit types depending on the shaft sizes that go through the units.



KEY PLAN - 4th Floor



KEY PLAN - Typical Floor



2BHK | Type D

4th Floor, Typical Floor

Internal Area	75.58 sqm.
Outdoor Area	16.12 sqm. , 12.12 sqm.
Total Area	91.70 sqm. , 87.70 sqm.

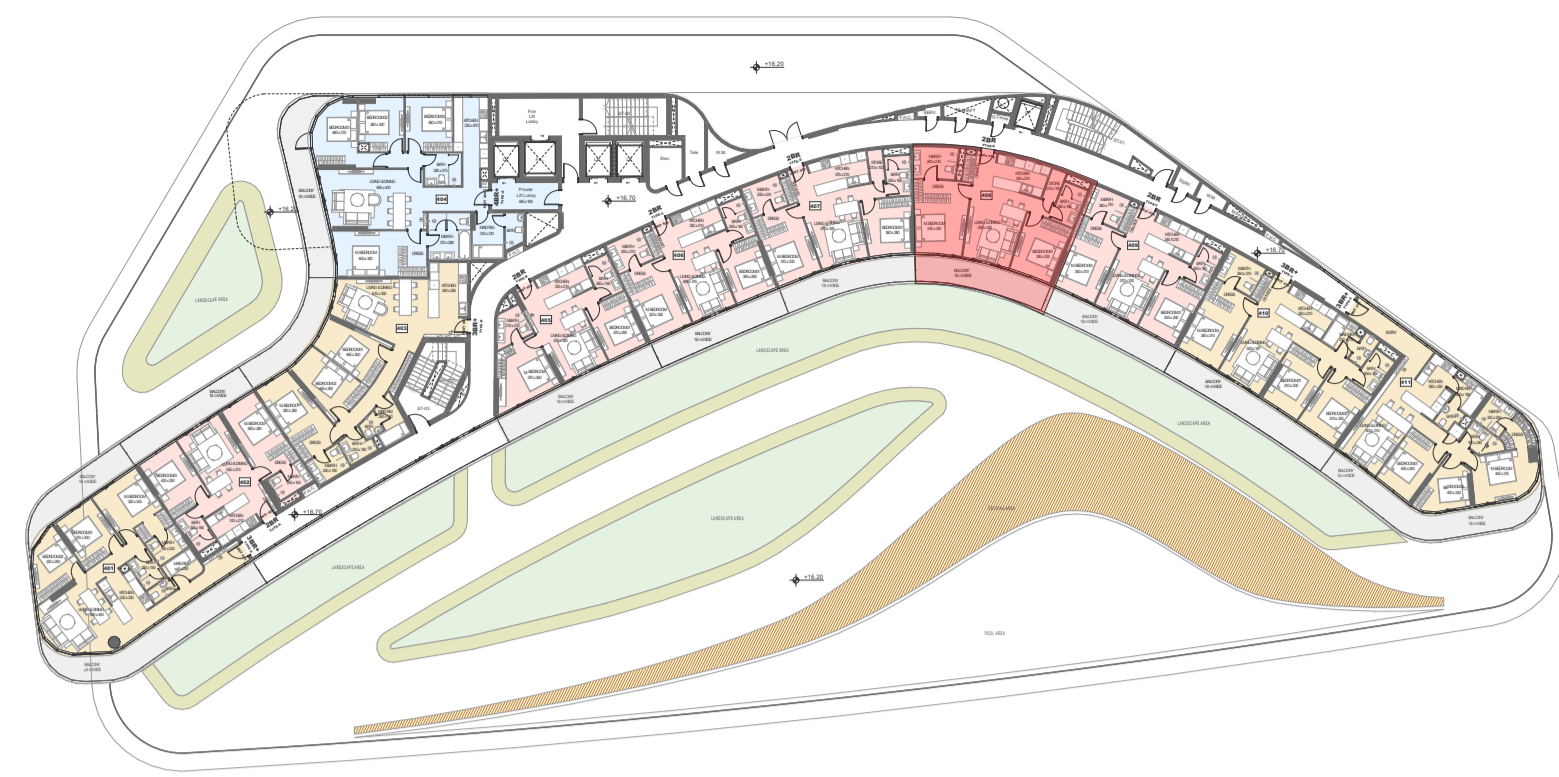
Note: Outdoor Area varies.

MARLIN 2

17-02-2025

Revision 01

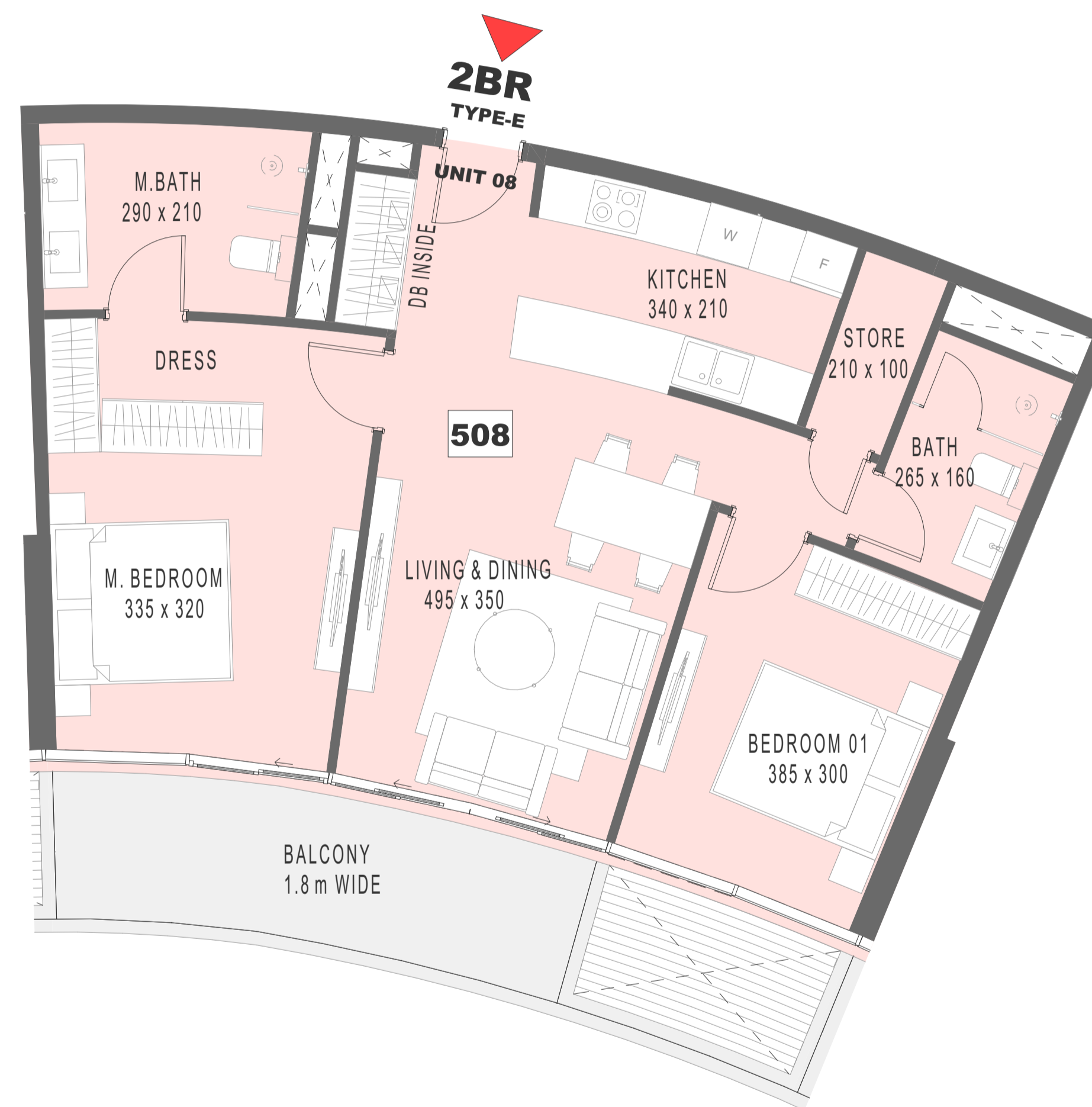
All drawings and dimensions are approximate. Drawings are not to scale and are subject to change without notice. The developer reserves the right to make revisions. The units are measured at typical floors in the building and columns may vary in size depending on the floor level. The furnishing and accessories shown are for representation only. The availability, length and width of the balcony varies depending on which floor and which orientation the unit is located within the building. There will be slight differences in the internal areas between the same unit types depending on the shaft sizes that go through the units.



KEY PLAN - 4th Floor



KEY PLAN - Typical Floor



2BHK | Type E

4th Floor, Typical Floor

Internal Area	78.64 sqm.
Outdoor Area	15.90 sqm. , 11.92 sqm.
Total Area	94.54 sqm. , 90.56 sqm.

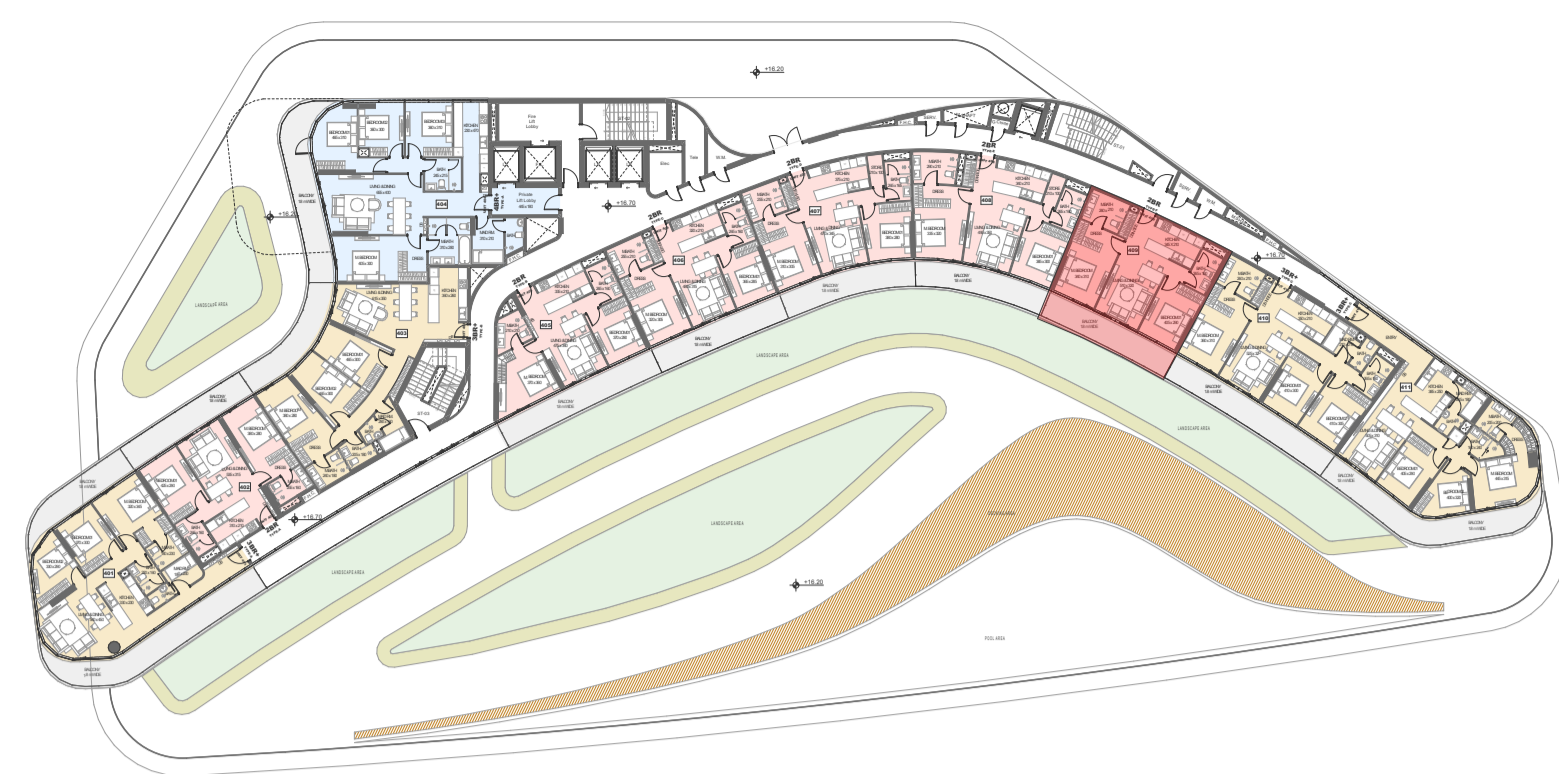
Note: Outdoor Area varies.

MARLIN 2

17-02-2025

Revision 01

All drawings and dimensions are approximate. Drawings are not to scale and are subject to change without notice. The developer reserves the right to make revisions. The units are measured at typical floors in the building and columns may vary in size depending on the floor level. The furnishing and accessories shown are for representation only. The availability, length and width of the balcony varies depending on which floor and which orientation the unit is located within the building. There will be slight differences in the internal areas between the same unit types depending on the shaft sizes that go through the units.



KEY PLAN - 4th Floor



KEY PLAN - Typical Floor



2BHK | Type F

4th Floor, Typical Floor

Internal Area	72.58 sqm.
Outdoor Area	16.49 sqm. , 12.36 sqm.
Total Area	89.07 sqm. , 84.94 sqm.

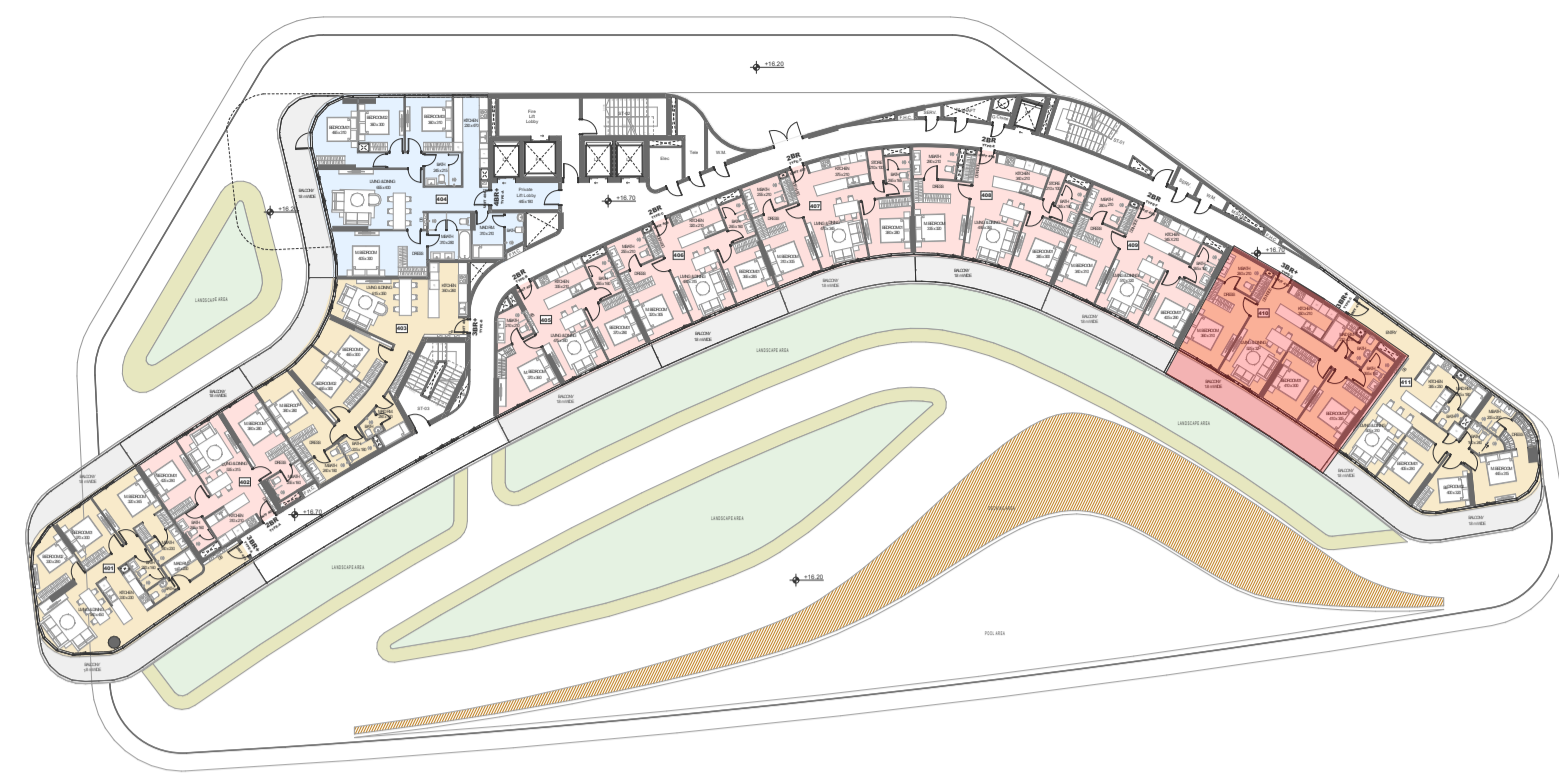
Note: Outdoor Area varies.

MARLIN 2

17-02-2025

Revision 01

All drawings and dimensions are approximate. Drawings are not to scale and are subject to change without notice. The developer reserves the right to make revisions. The units are measured at typical floors in the building and columns may vary in size depending on the floor level. The furnishing and accessories shown are for representation only. The availability, length and width of the balcony varies depending on which floor and which orientation the unit is located within the building. There will be slight differences in the internal areas between the same unit types depending on the shaft sizes that go through the units.



KEY PLAN - 4th Floor



KEY PLAN - Typical Floor



3BHK | Type C

4th Floor, Typical Floor

Internal Area	99.29 sqm.
Outdoor Area	22.09 sqm. , 13.25 sqm.
Total Area	121.38 sqm. , 112.54 sqm.

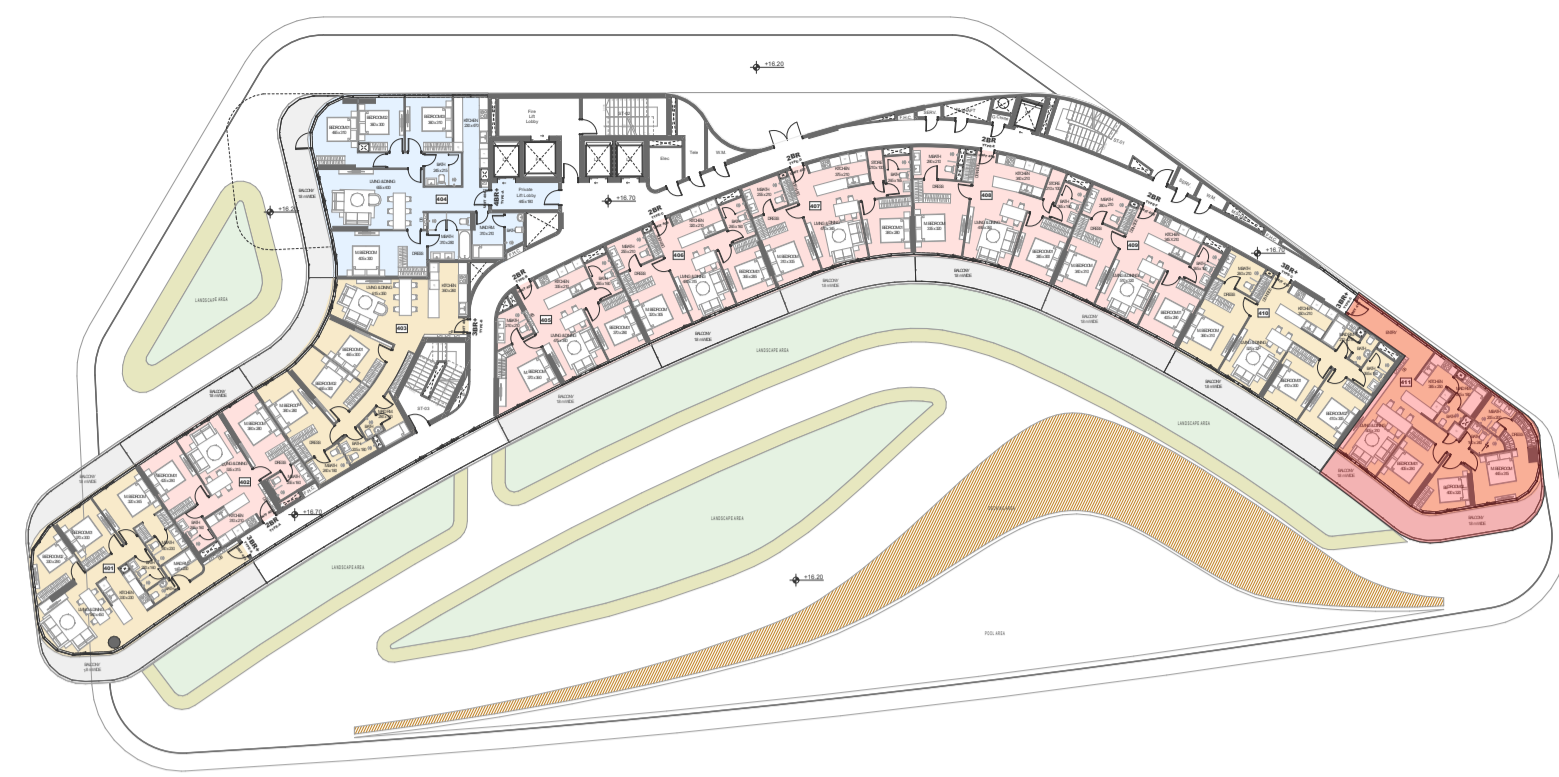
Note: Outdoor Area varies.

MARLIN 2

17-02-2025

Revision 01

All drawings and dimensions are approximate. Drawings are not to scale and are subject to change without notice. The developer reserves the right to make revisions. The units are measured at typical floors in the building and columns may vary in size depending on the floor level. The furnishing and accessories shown are for representation only. The availability, length and width of the balcony varies depending on which floor and which orientation the unit is located within the building. There will be slight differences in the internal areas between the same unit types depending on the shaft sizes that go through the units.



KEY PLAN - 4th Floor



KEY PLAN - Typical Floor



3BHK | Type D

4th Floor, Typical Floor

Internal Area	108.28 sqm.
Outdoor Area	28.17 sqm. , 23.86 sqm.
Total Area	136.45 sqm. , 132.14 sqm.

Note: Outdoor Area varies.

MARLIN 2

17-02-2025

Revision 01

All drawings and dimensions are approximate. Drawings are not to scale and are subject to change without notice. The developer reserves the right to make revisions. The units are measured at typical floors in the building and columns may vary in size depending on the floor level. The furnishing and accessories shown are for representation only. The availability, length and width of the balcony varies depending on which floor and which orientation the unit is located within the building. There will be slight differences in the internal areas between the same unit types depending on the shaft sizes that go through the units.



KEY PLAN - 18th Floor



4BHK | Type B

18th Floor

Internal Area	218.86 sqm.
Outdoor Area	293.42 sqm.
Total Area	512.28 sqm.

MARLIN 2

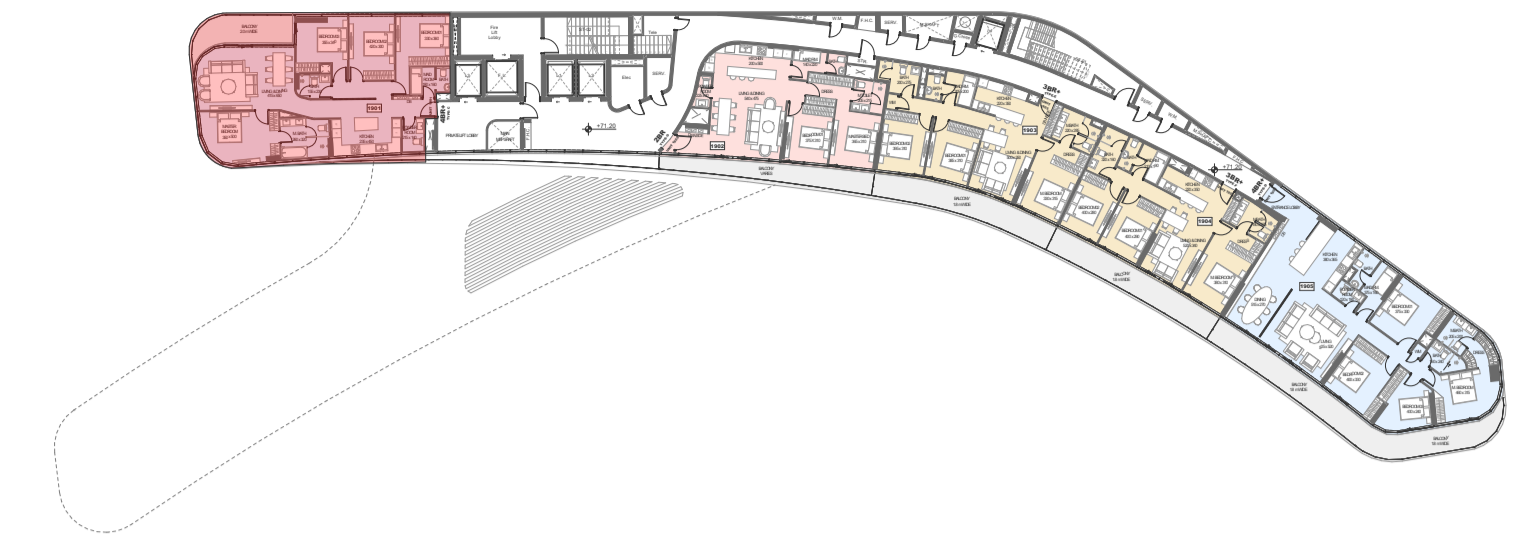
17-02-2025

Revision 01

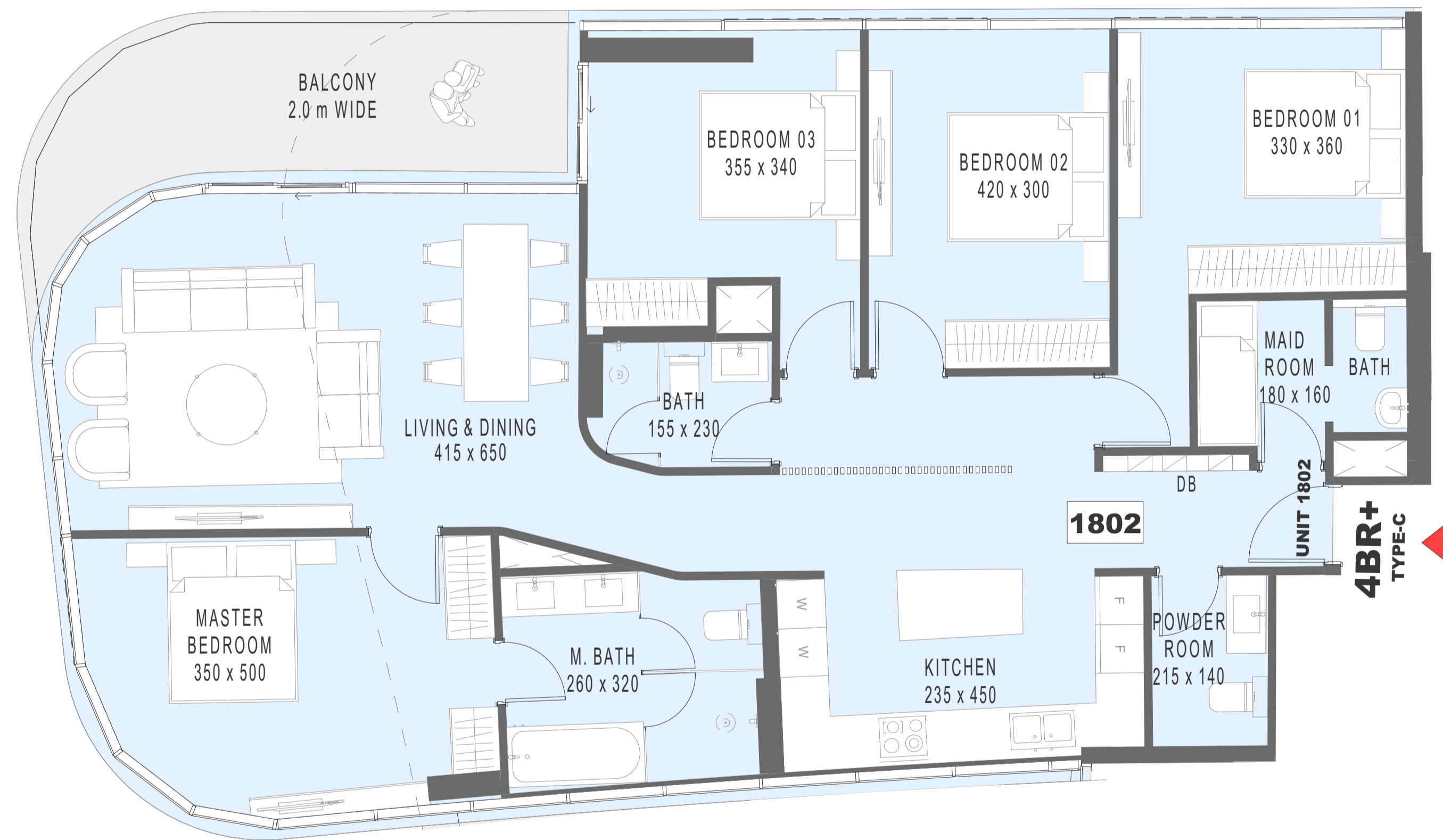
All drawings and dimensions are approximate. Drawings are not to scale and are subject to change without notice. The developer reserves the right to make revisions. The units are measured at typical floors in the building and columns may vary in size depending on the floor level. The furnishing and accessories shown are for representation only. The availability, length and width of the balcony varies depending on which floor and which orientation the unit is located within the building. There will be slight differences in the internal areas between the same unit types depending on the shaft sizes that go through the units.



KEY PLAN - 18th Floor



KEY PLAN - 19th Floor



4BHK | Type C

18th Floor, 19th Floor

Internal Area	144.97 sqm. , 146.05 sqm.
Outdoor Area	13.69 sqm. , 16.33 sqm.
Total Area	158.66 sqm. , 162.38 sqm.

Note: Indoor & Outdoor Area varies.

MARLIN 2

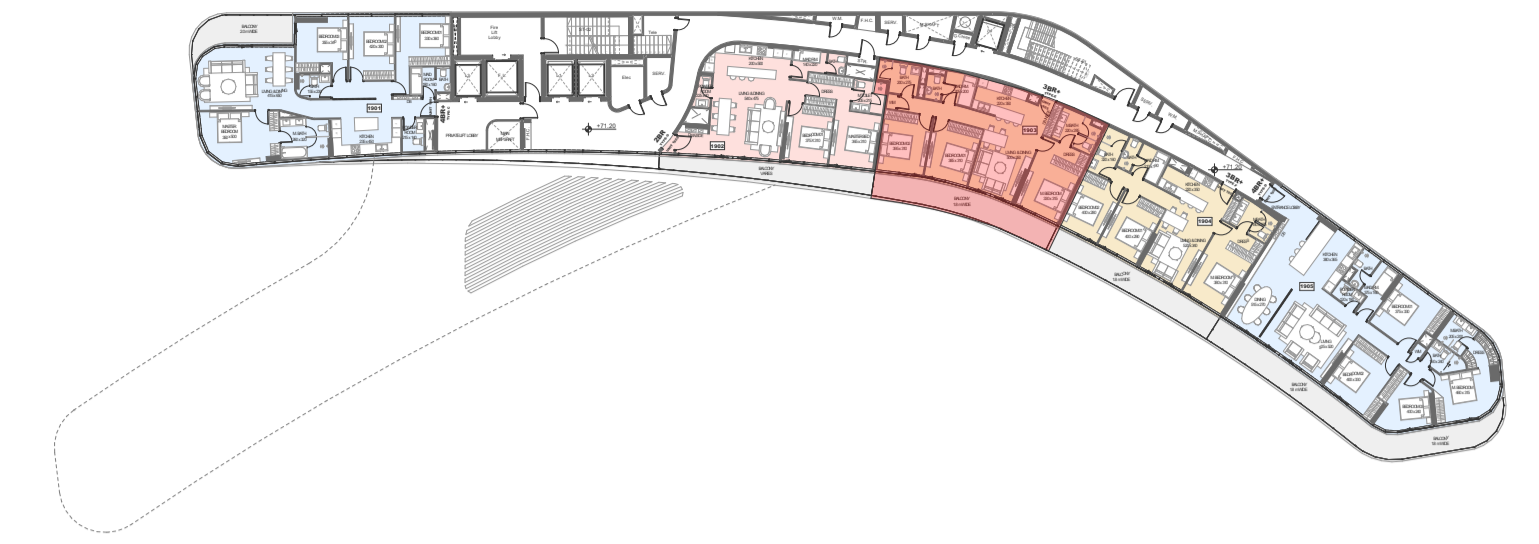
17-02-2025

Revision 01

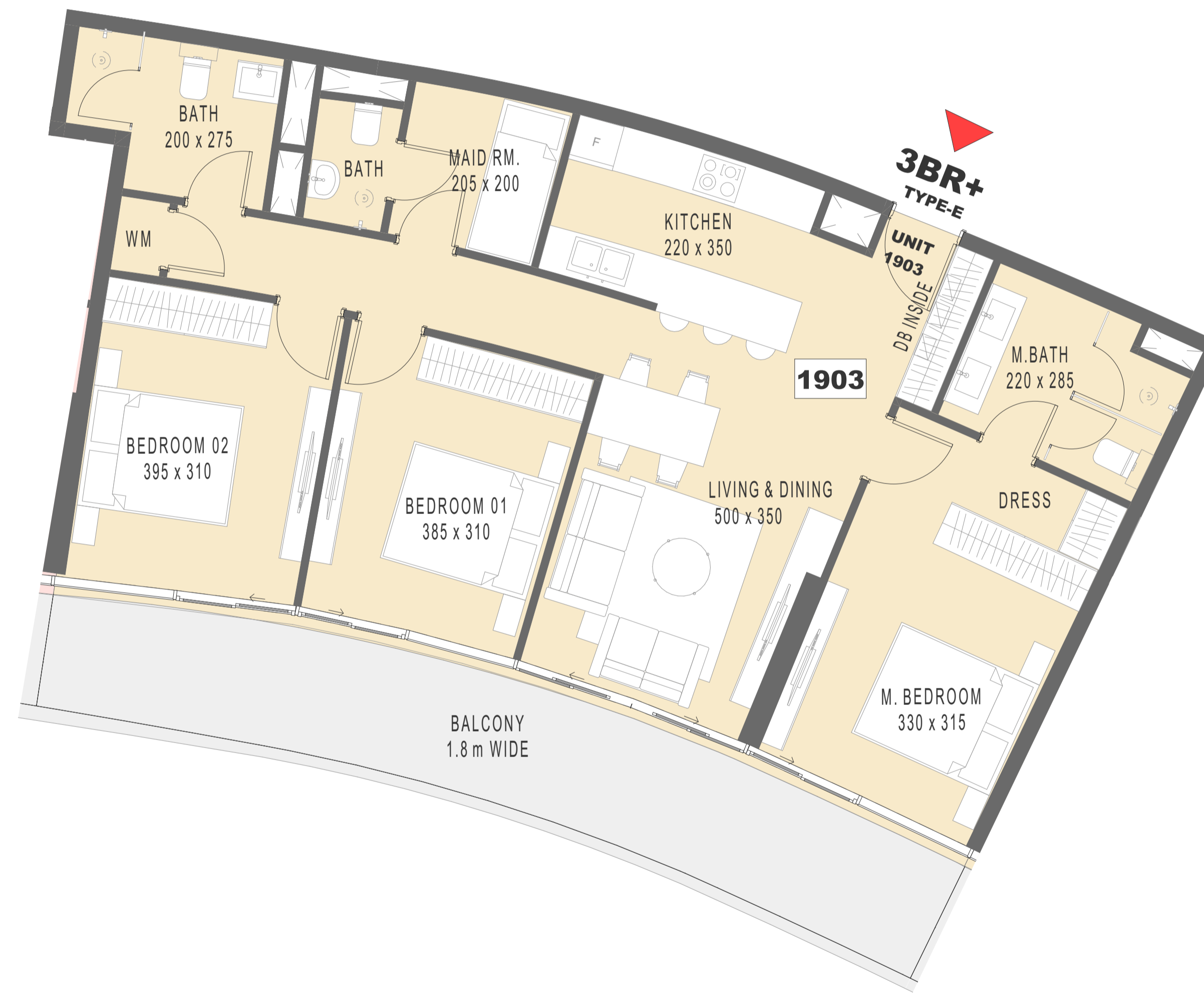
All drawings and dimensions are approximate. Drawings are not to scale and are subject to change without notice. The developer reserves the right to make revisions. The units are measured at typical floors in the building and columns may vary in size depending on the floor level. The furnishing and accessories shown are for representation only. The availability, length and width of the balcony varies depending on which floor and which orientation the unit is located within the building. There will be slight differences in the internal areas between the same unit types depending on the shaft sizes that go through the units.



KEY PLAN - 18th Floor



KEY PLAN - 19th Floor



3BHK | Type E

18th Floor, 19th Floor

Internal Area	102.86 sqm.
Outdoor Area	22.25 sqm. , 21.95 sqm.
Total Area	125.11 sqm. , 124.81 sqm.

Note: Outdoor Area varies.

MARLIN 2

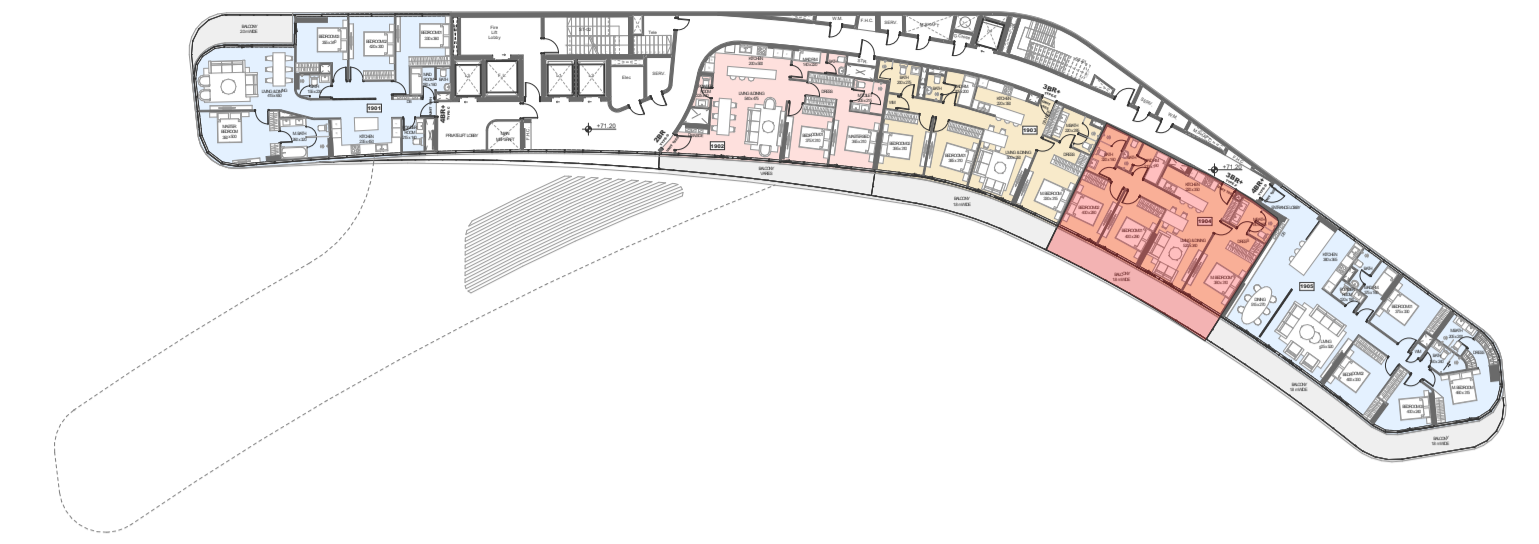
17-02-2025

Revision 01

All drawings and dimensions are approximate. Drawings are not to scale and are subject to change without notice. The developer reserves the right to make revisions. The units are measured at typical floors in the building and columns may vary in size depending on the floor level. The furnishing and accessories shown are for representation only. The availability, length and width of the balcony varies depending on which floor and which orientation the unit is located within the building. There will be slight differences in the internal areas between the same unit types depending on the shaft sizes that go through the units.



KEY PLAN - 18th Floor



KEY PLAN - 19th Floor



3BHK | Type F

18th Floor, 19th Floor

Internal Area	97.33 sqm.
Outdoor Area	21.88 sqm.
Total Area	119.21 sqm.

MARLIN 2

17-02-2025

Revision 01

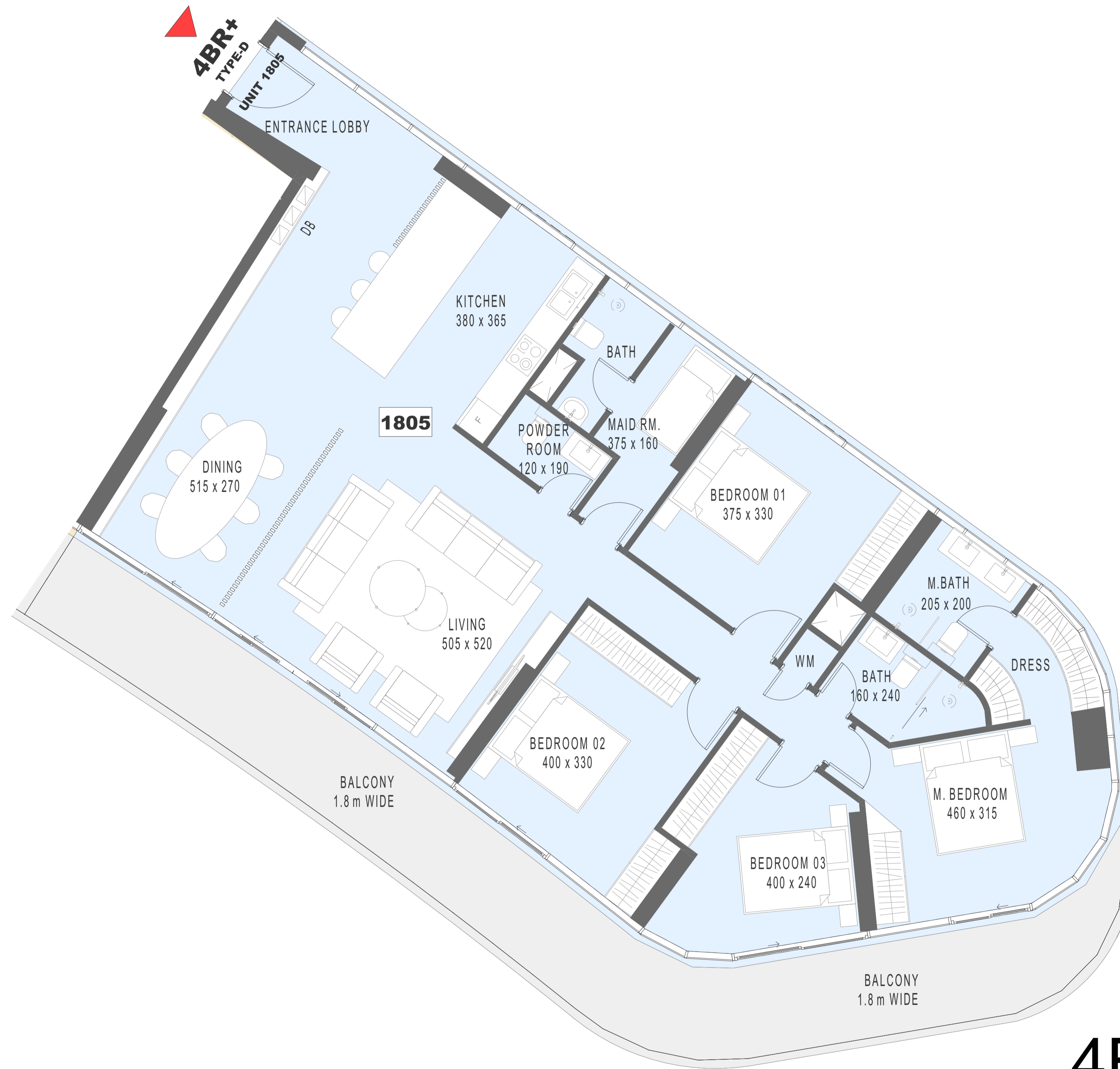
All drawings and dimensions are approximate. Drawings are not to scale and are subject to change without notice. The developer reserves the right to make revisions. The units are measured at typical floors in the building and columns may vary in size depending on the floor level. The furnishing and accessories shown are for representation only. The availability, length and width of the balcony varies depending on which floor and which orientation the unit is located within the building. There will be slight differences in the internal areas between the same unit types depending on the shaft sizes that go through the units.



KEY PLAN - 18th Floor



KEY PLAN - 19th Floor



4BHK | Type D

18th Floor, 19th Floor

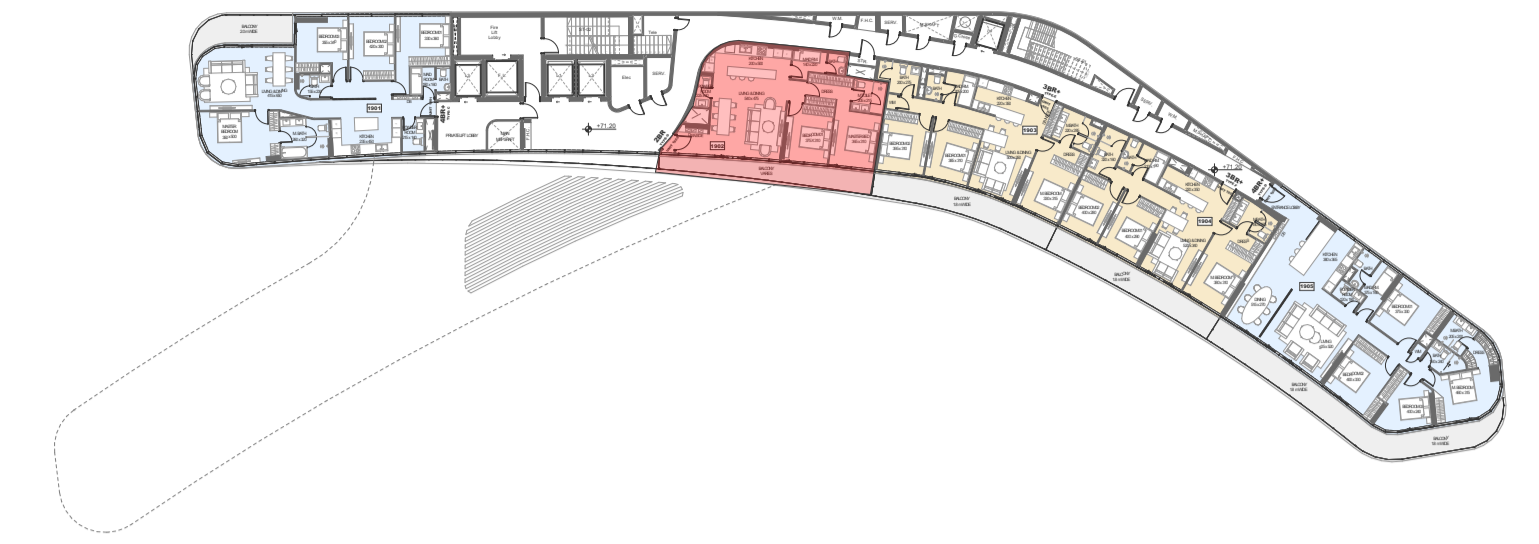
Internal Area	163.66 sqm.
Outdoor Area	39.35 sqm.
Total Area	203.01 sqm.

MARLIN 2

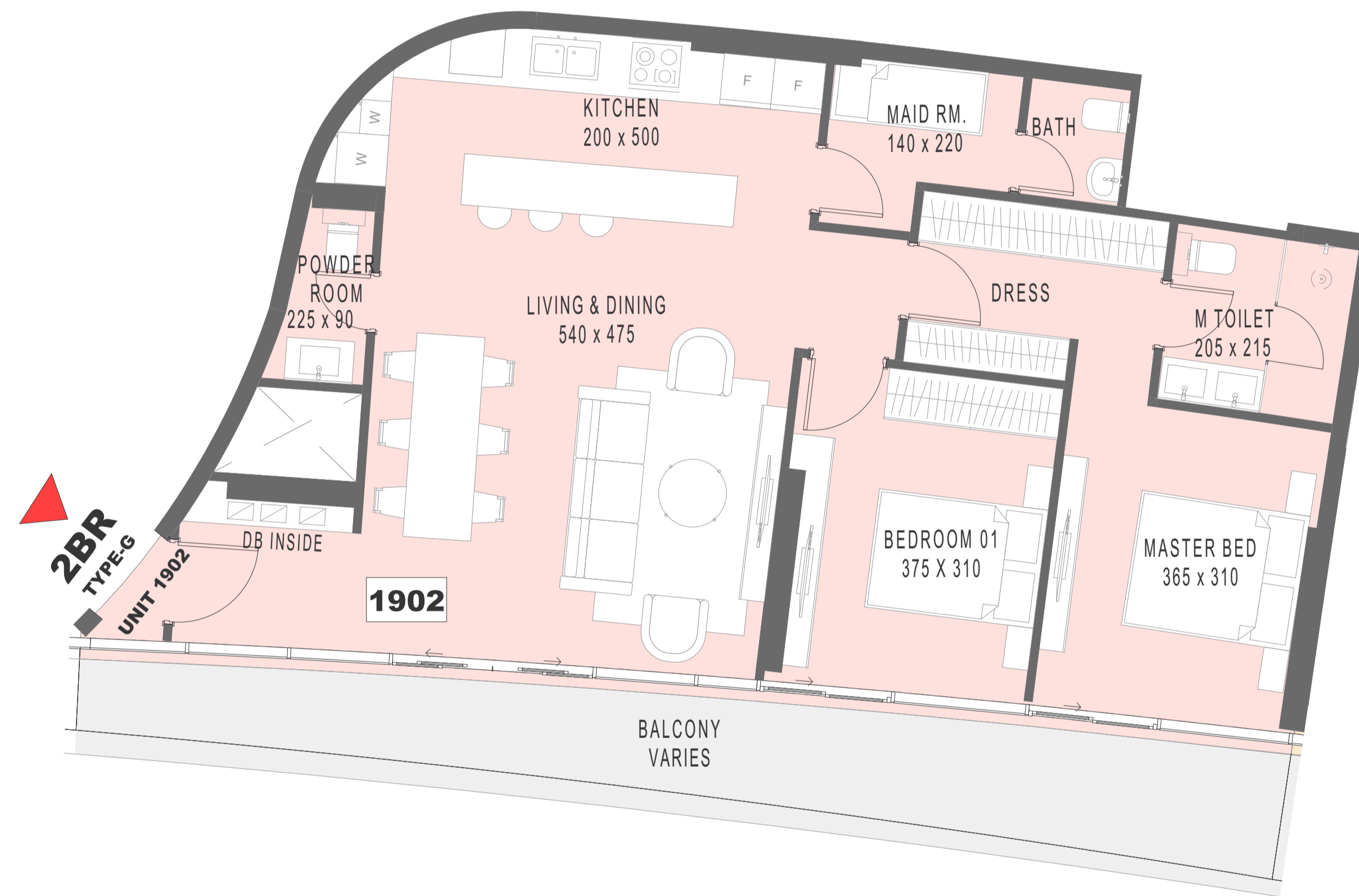
17-02-2025

Revision 01

All drawings and dimensions are approximate. Drawings are not to scale and are subject to change without notice. The developer reserves the right to make revisions. The units are measured at typical floors in the building and columns may vary in size depending on the floor level. The furnishing and accessories shown are for representation only. The availability, length and width of the balcony varies depending on which floor and which orientation the unit is located within the building. There will be slight differences in the internal areas between the same unit types depending on the shaft sizes that go through the units.



KEY PLAN - 19th Floor



2BHK | Type G

19th Floor

Internal Area	93.13 sqm.
Outdoor Area	19.87 sqm.
Total Area	113.00 sqm.

MARLIN 2

17-02-2025

Revision 01

All drawings and dimensions are approximate. Drawings are not to scale and are subject to change without notice. The developer reserves the right to make revisions. The units are measured at typical floors in the building and columns may vary in size depending on the floor level. The furnishing and accessories shown are for representation only. The availability, length and width of the balcony varies depending on which floor and which orientation the unit is located within the building. There will be slight differences in the internal areas between the same unit types depending on the shaft sizes that go through the units.