



رُكَّانُ 2- لوفتس
RUKAN 2- LOFTS





رُكَّانُ 2- لوفتس
RUKAN 2- LOFTS

جوهر الحياة
THE ESSENCE
OF LIFE

ريپورتاج العقارية

تهدف ريبورتاج العقارية، منذ تأسيسها في عام ٢٠١٤، إلى توفير حلول سكنية مبتكرة من خلال تطوير وتسليم المشاريع العقارية في أبوظبي ودبي والتي تقدم لمستثمريها قيمة فريدة من نوعها حيث يتم الالتزام بتسليم المشاريع العقارية في الموعد المحدد. تلتزم ريبورتاج العقارية بتصميم منازل ذات مستويات معيشية لا مثيل لها وتطمح لتكون علامة تجارية يمكنك الاعتماد عليها.

ريبورتاج برايم هي شركة تابعة لريبورتاج العقارية.

REPORTAGE

PROPERTIES

Since being established in 2014, Reportage Properties has aimed to provide innovative housing solutions by developing and delivering property in Abu Dhabi and Dubai which offer our investors outstanding value and are completed over a timely period. Reportage Properties is committed to creating homes with unrivalled standards of living from a household brand you can rely on.

Reportage Prime is a subsidiary under the umbrella of Reportage Properties.

YOUR
FUTURE
INVESTMENT





DUBAI'S ENTERTAINMENT HUB

ABOUT

DUBAI LAND

Dubailand stretches out across an immense 3 billion square feet in the heart of the city, making it the largest district in Dubai. The area was designed to be Dubai's entertainment hub and is divided between a vibrant mix of vast residential communities and popular leisure attractions. Well-known residential projects and communities such as Al Barari and Arabian Ranches fall within the district, as well as the anticipated upcoming mega-project of Mohammed Bin Rashid City.

عن دبي لاند

تمتد دبي لاند على مساحة هائلة تبلغ ٣ مليار قدم مربع في قلب المدينة، مما يجعلها أكبر منطقة في دبي. تم تصميم المنطقة لتكون مركزاً ترفيهياً في دبي وتنقسم إلى مزيج نابض بالحياة من المجتمعات السكنية الفسيحة وأماكن ترفيهية شهيرة. تقع المشاريع والمجتمعات السكنية المعروفة مثل البراري والمرابع العربية ضمن المنطقة، بالإضافة إلى المشروع الضخم المتوقع لمدينة محمد بن راشد.

موقع متميز

يقع ركان لوفتس بجوار المرافق العربية والعديد من المجتمعات المشابهة. يتمتع مجتمع ركان بخدمات ممتازة، مجهز بالكامل لتلبية كل احتياجات السكان مع إمكانية الوصول المباشر إلى شارع الإمارات، بالإضافة إلى كونه يحتوي على المحلات التجارية ومسجد ومساح.

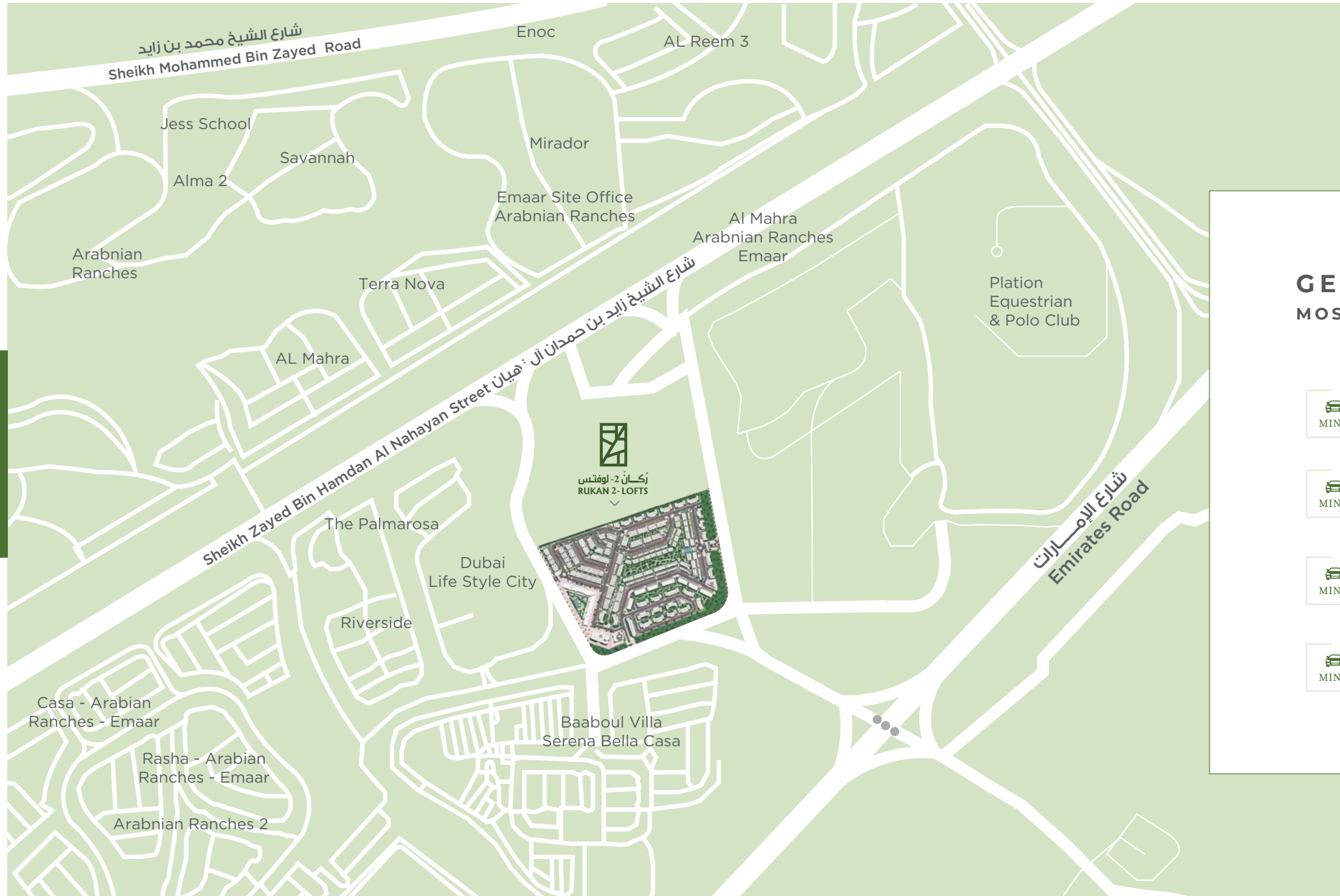
PREMIUM LOCATION

Located next to Arabian Ranches, and multiple similar communities, Rukan Lofts is in an exceptionally serviced community with direct access to Emirates Road through the Villas, as well as being equipped with retail stores, a nursery, a mosque and several swimming pools, Rukan Lofts is able to cater to its residents every need.





LEAVE THE WORLD
BEHIND



GET CLOSER TO DUBAI'S MOST POPULAR LANDMARKS

10 MINUTES | GLOBAL VILLAGE

05 MINUTES | DUBAI EXPO 2021

15 MINUTES | IMG WORLDS OF ADVENTURE

15 MINUTES | MIRACLE GARDEN

25 MINUTES | BURJ KHALIFA DUBAI MALL

25 MINUTES | MALL OF THE EMIRATES

25 MINUTES | DUBAI INTERNATIONAL AIRPORT

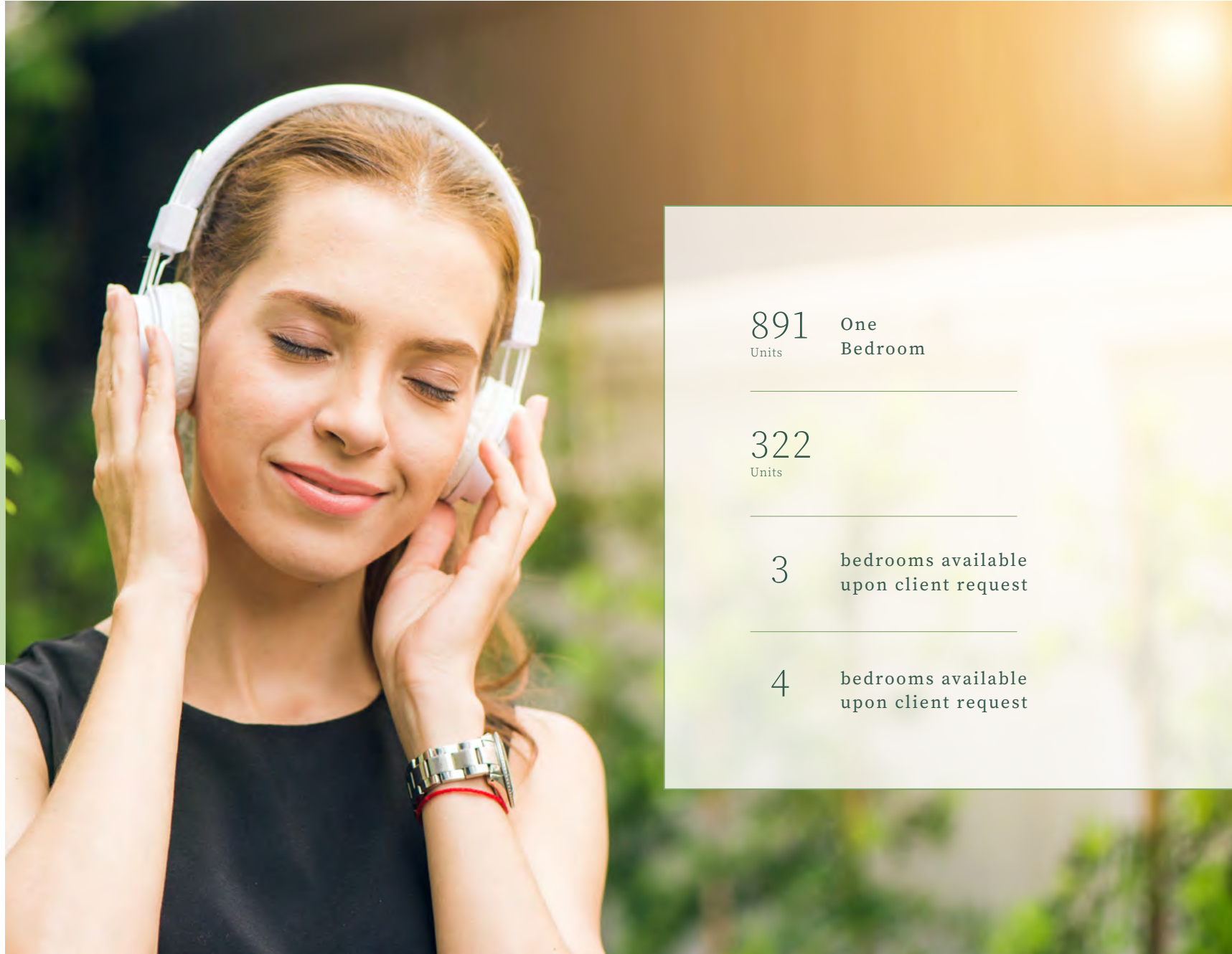
15 MINUTES | HAMDAN SPORTS COMPLEXES

RUKAN 2- LOFTS

A gated compound with more than 800 contemporarily designed townhouses which are provided with a dedicated parking bay and a private front and backyard. The project has been thoughtfully designed to take into consideration all the greenery and open spaces around it to create the perfect home environment that blends well with its surroundings.

ركان ٢ - لوفتس مجمع محاط بسور يحتوي على أكثر من ٨٠٠ تاون هاوس متميزون بتصميمهم المعاصر. كل تاون هاوس مزود بمواقف مخصصة للسيارات وواجهة خاصة وفتاء خلفي، حسب نوع الوحدة. تم تصميم المشروع بعناية ليأخذ في الاعتبار جميع المساحات الخضراء والمساحات المفتوحة حوله لتوفير بيئة منزلية مثالية متناسقة مع الأماكن المحيطة.

منزلك
مدى الحياة
**YOUR LIFETIME
HOME**



891 Units
One Bedroom

322 Units

3 bedrooms available upon client request

4 bedrooms available upon client request



Dubai land spans over 2,600,000 Sq. ft



Space made up of 70% Open public realms and greenery



Spanning across approximately 2,600,000 sq. ft, the space is made up of over 70% vast open public realms and greenery creating the perfect relaxing, tranquil home environment for you and your family.

الذكريات تمتد مساحة ركان لوفتس على ما يقارب ٢,٦٠٠,٠٠٠ قدم مربع، وتتكون المساحة من أكثر من ٧٠% من المناظر والحدائق المفتوحة والمساحات الخضراء مما يوفر بيئة منزلية هادئة ومريحة لك ولعائلتك.



عولم خضراء
حيث تصنع الذكريات

GREEN REALMS
WHERE MEMORIES ARE MADE



AN INSPIRING NEW
NEIGHBORHOOD



UNIQUE ONE-BEDROOM TOWNHOUSES WITH LOFT DESIGN

STYLE YOUR HOME

YOUR WAY

Flooded with natural light, every space offers an 'airy' feel inspired by the nature and greenery that surrounds it. From the wood flooring to the concrete exteriors, the neutral colour palette provides the perfect space for you to style your home, your way.

صمم منزلك

بطريقتك الخاصة

مغمورة بالضوء الطبيعي، توفر كل مساحة إحساسًا منعشًا مستوحى من الطبيعة والمساحات الخضراء المحيطة به. من الأرضيات الخشبية إلى الأجزاء الخارجية الصلبة وألوانها المحايدة، توفر كل مساحة الفرصة المثالية لك لتصميم منزلك، بطريقتك الخاصة.



REJUVENATE
AT THE SWIMMING POOL
WITH IMPECCABLE
VIEWS





AMENITIES

AND FACILITIES

وسائل الراحة والخدمات



Private Front & Backyard
(based on unit type)
فناء أمامي وخلفي (حسب نوع الوحدة)



Dedicated Parking
مواقف مخصصة
للسيارات



3 Swimming pools
٣ مسابح



GYM
صالة ألعاب رياضية



Shopping Centres
محلات تجارية



Running tracks
مسارات للجري



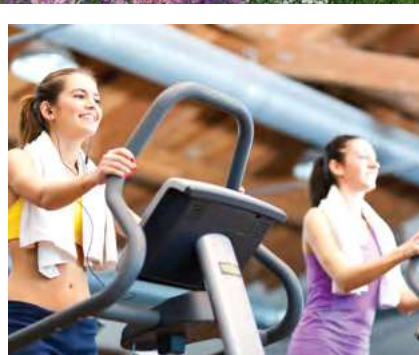
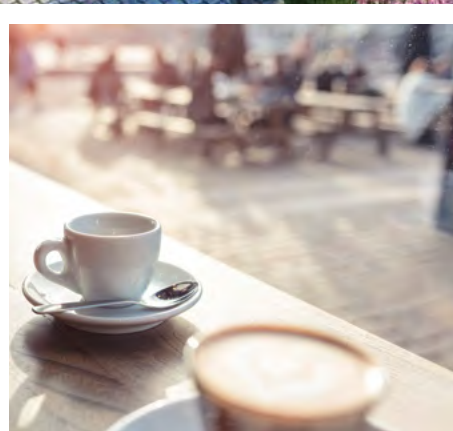
Mosque
مسجد



Designated BBQ
Areas
مناطق مخصصة للشواء



Balcony available on
selected units
شرفات متاحة في وحدات
محددة



ENJOY A POSITIVE AND
RELAXING
ENVIRONMENT WITH
YOUR LOVED ONES



أنواع الوحدات UNIT TYPES

One-bedroom and two-bedroom units available.

Three-bedroom and four-bedroom units are made available upon the client's request.

تتوفر وحدات بغرفة نوم واحدة وغرفتي نوم.

يتم توفير وحدات من ثلاث غرف نوم وأربع غرف نوم بناءً على طلب العميل.



UNIT FEATURES

- Kitchen cabinets and countertops
- Balconies as per unit plan
- Built-in wardrobes in bedrooms
- Fully tiled bathrooms
- Double glazed windows
- Satellite master antenna and fibre optics for high speed internet connection
- Double height living room
- Central air conditioning
- Natural lighting across the villa spaces

ريپورتاج العقارية Reportage. Properties

Abu Dhabi

Marina Square, Tamouh Tower,
27th Floor, Al Reem Island,
P.O. Box 111949- Abu Dhabi, UAE
Tel: +971 2 204 33 00

Dubai

3rd Floor, Oberoi Centre,
Al A'amal Street Business Bay
P.O. Box 27446, Dubai, UAE.
Tel: +971 4 240 5556

Account Number - 35911-3931-004

IBAN number - AE980070035911393101004

Beneficiary Name - Rukan 2 Escrow

Currency - AED

Swift code - ARAIAEAD

For more information, visit reportageuae.com
or call 800 7755 2 | +971 50 244 1078

[f](#) [@](#) [t](#) [in](#) @reportageproperties





رُكَّانُ 2- لوفتس
RUKAN 2- LOFTS



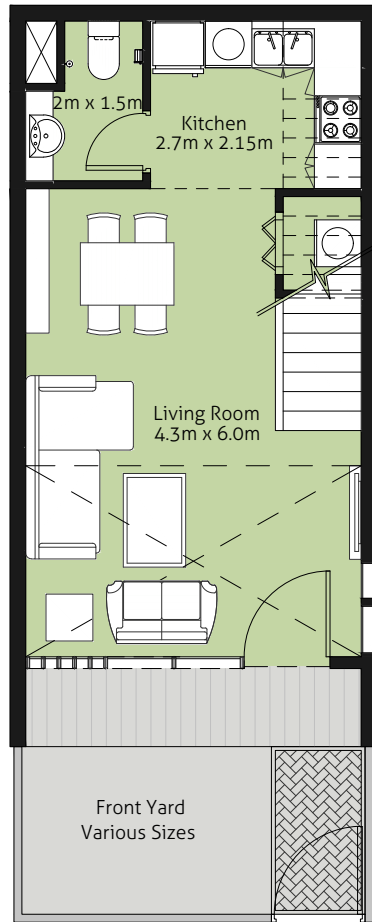
PHASE-1&2



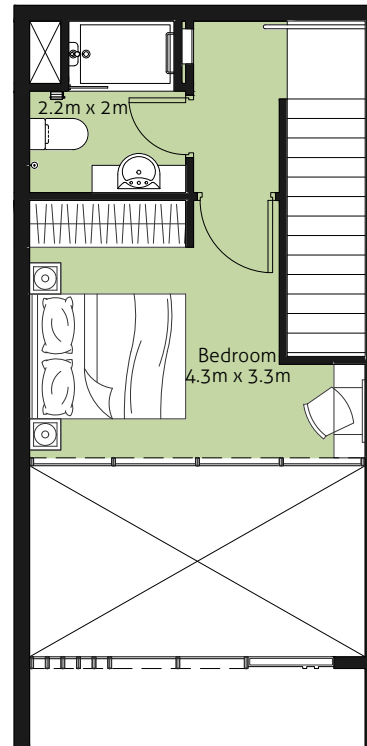
1

BEDROOM TOWN HOUSE TYPE-B

PHASE - 1



Ground Floor



First Floor

DISCLAIMER "All drawings and dimensions are approximates. Drawings are not to scale and are subjects to change without notice. The developer reserves the right to make revisions. The units are taken from the typical floor of the building and columns may vary in size depending on the floor level. The furnishings and accessories shown are for representation only. The length and width of the unit and balcony varies depending on which floor and which orientation the unit is located within the building to comply with the building authority regulations."

2

BEDROOM TOWN HOUSE TYPE-A

PHASE - 1



DISCLAIMER "All drawings and dimensions are approximates. Drawings are not to scale and are subjects to change without notice. The developer reserves the right to make revisions. The units are taken from the typical floor of the building and columns may vary in size depending on the floor level. The furnishings and accessories shown are for representation only. The length and width of the unit and balcony varies depending on which floor and which orientation the unit is located within the building to comply with the building authority regulations."

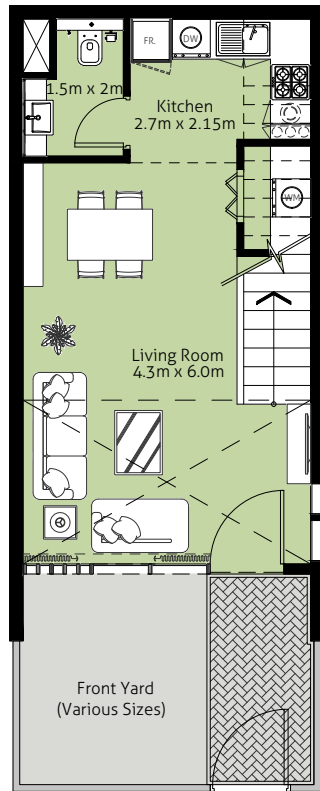


1

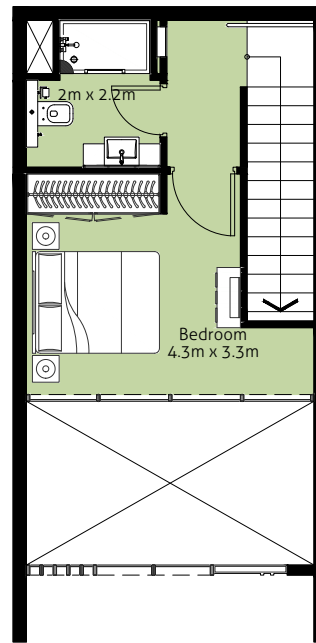
BEDROOM TOWN HOUSE

TYPE-A

PHASE - 2



Ground Floor



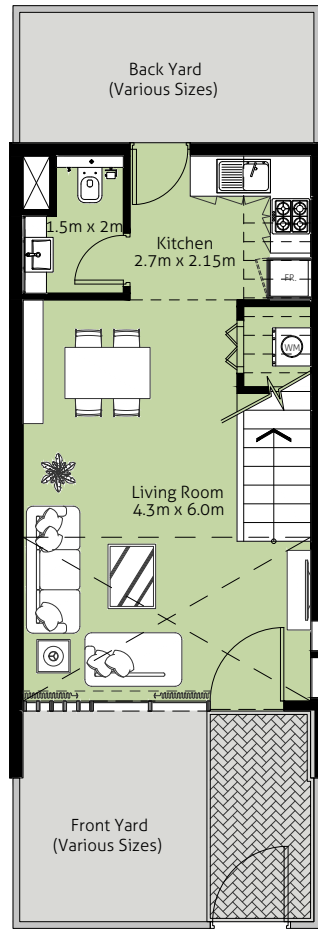
First Floor



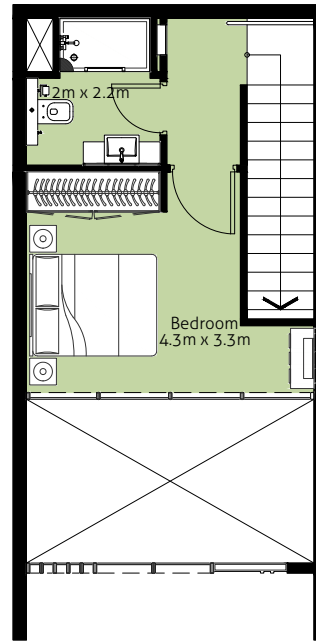
1

BEDROOM TOWN HOUSE TYPE-B

PHASE - 2



Ground Floor



First Floor

DISCLAIMER "All drawings and dimensions are approximates. Drawings are not to scale and are subjects to change without notice. The developer reserves the right to make revisions. The units are taken from the typical floor of the building and columns may vary in size depending on the floor level. The furnishings and accessories shown are for representation only. The length and width of the unit and balcony varies depending on which floor and which orientation the unit is located within the building to comply with the building authority regulations."

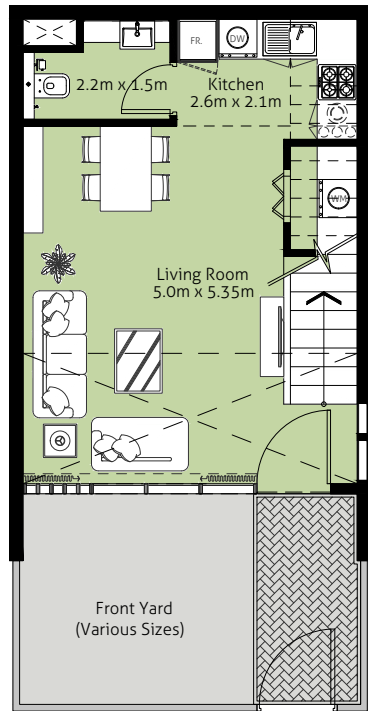


1

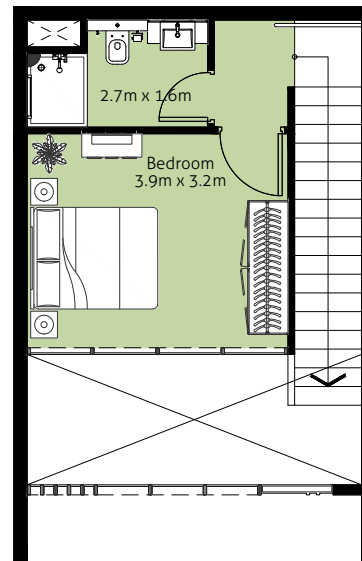
BEDROOM TOWN HOUSE

TYPE-C

PHASE - 2



Ground Floor



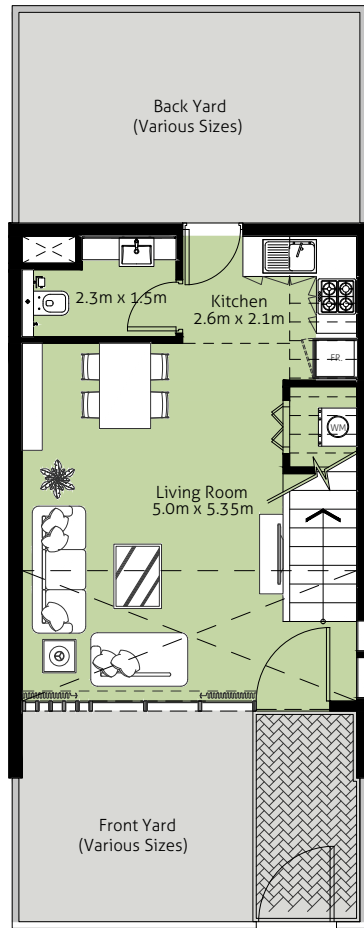
First Floor



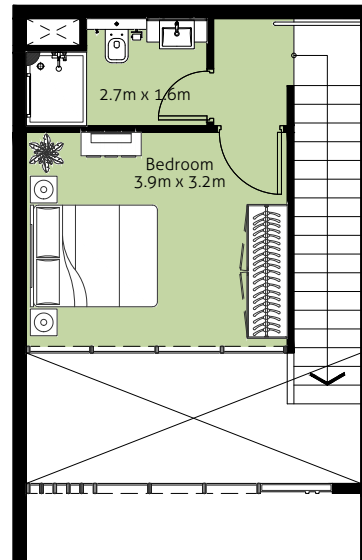
1

BEDROOM TOWN HOUSE TYPE-D

PHASE - 2



Ground Floor



First Floor

DISCLAIMER "All drawings and dimensions are approximates. Drawings are not to scale and are subjects to change without notice. The developer reserves the right to make revisions. The units are taken from the typical floor of the building and columns may vary in size depending on the floor level. The furnishings and accessories shown are for representation only. The length and width of the unit and balcony varies depending on which floor and which orientation the unit is located within the building to comply with the building authority regulations."

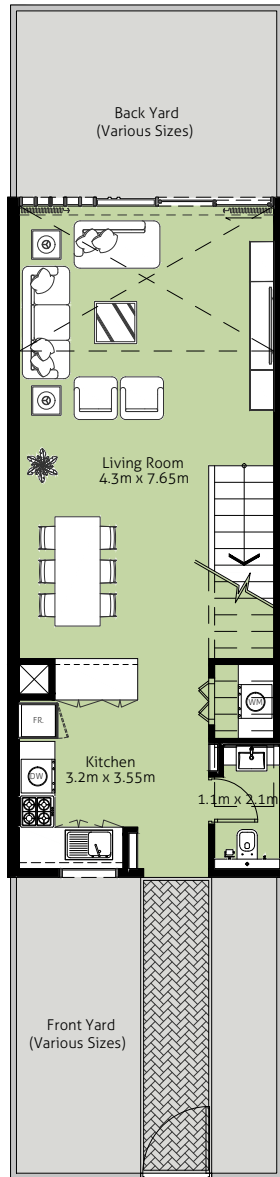
2

BEDROOM TOWN HOUSE

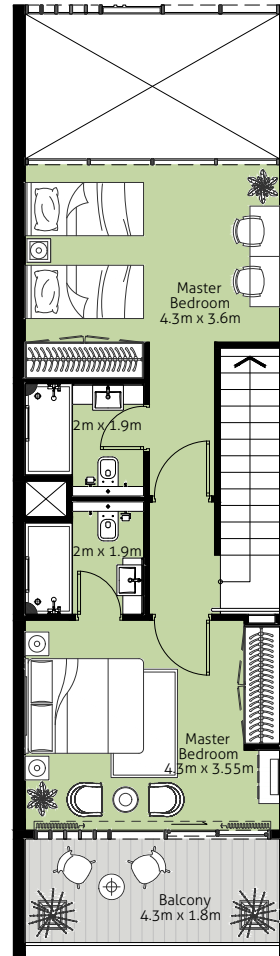
TYPE-A

PHASE - 2

RUKAN 2 - LOFTS



Ground Floor



First Floor

DISCLAIMER "All drawings and dimensions are approximates. Drawings are not to scale and are subjects to change without notice. The developer reserves the right to make revisions. The units are taken from the typical floor of the building and columns may vary in size depending on the floor level. The furnishings and accessories shown are for representation only. The length and width of the unit and balcony varies depending on which floor and which orientation the unit is located within the building to comply with the building authority regulations."

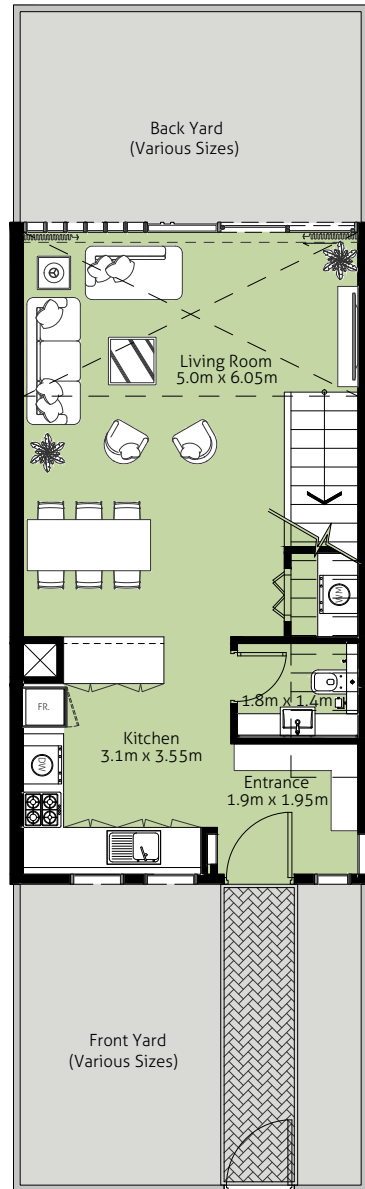
2

BEDROOM TOWN HOUSE

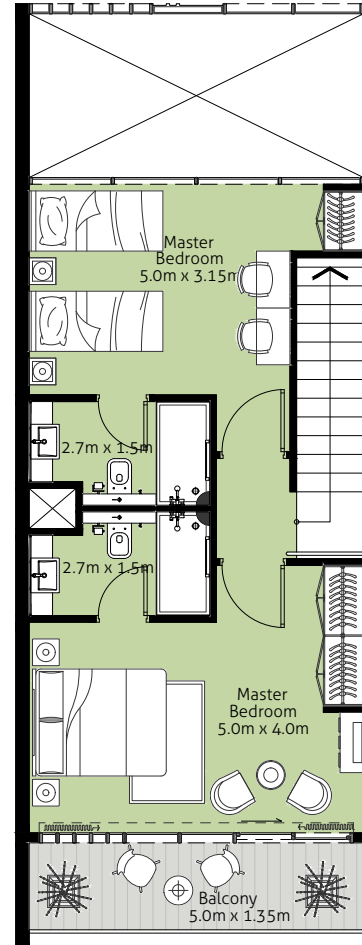
TYPE-B

PHASE - 2

RUKAN 2 - LOFTS



Ground Floor



First Floor

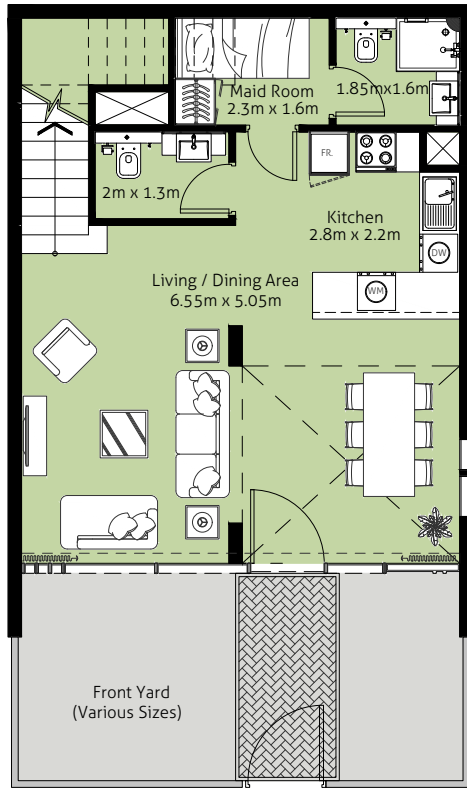
2

BEDROOM TOWN HOUSE + MAID

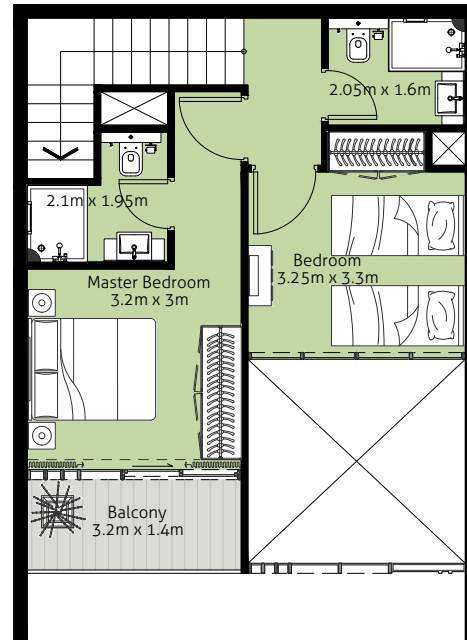
TYPE-C

PHASE - 2

RUKAN 2 - LOFTS



Ground Floor



First Floor

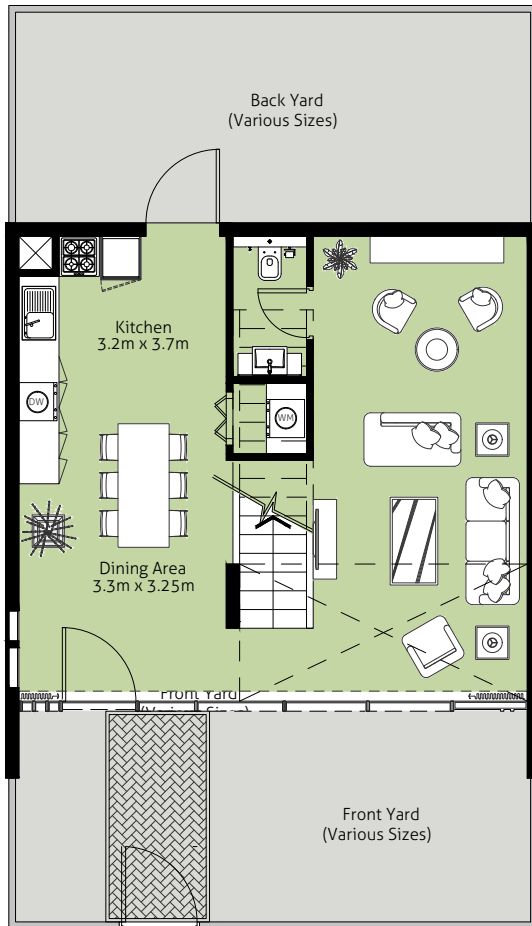
2

BEDROOM TOWN HOUSE

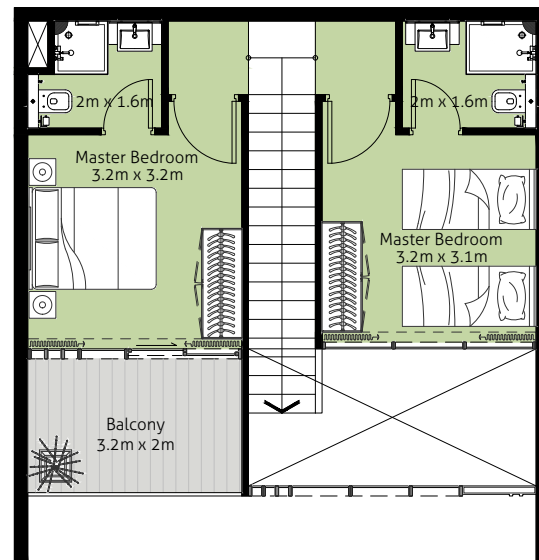
TYPE-D

PHASE - 2

RUKAN 2 - LOFTS



Ground Floor



First Floor

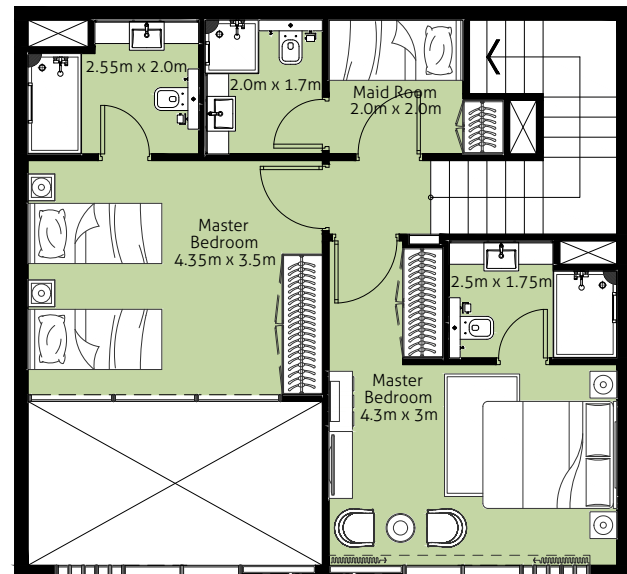
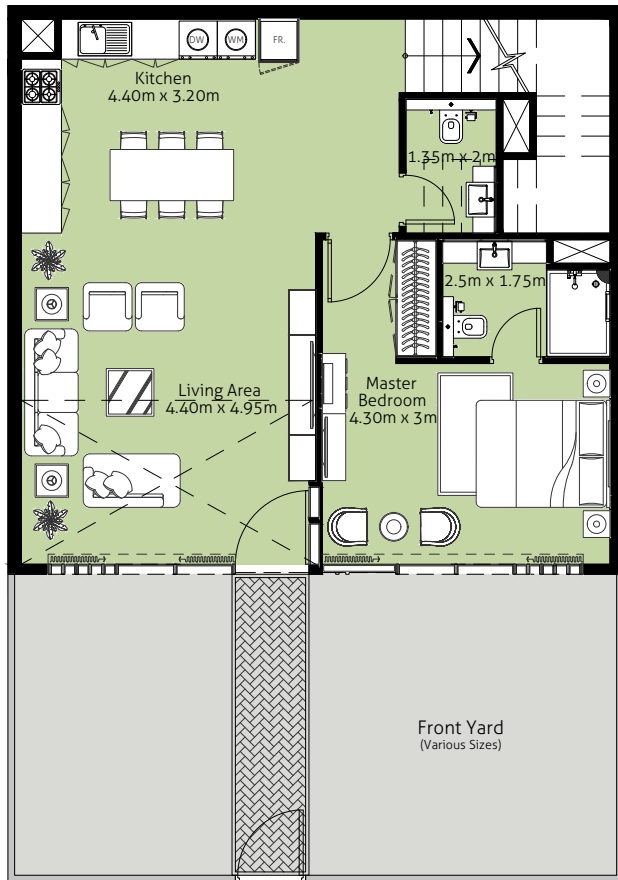
3

BEDROOM TOWN HOUSE + MAID

TYPE-A

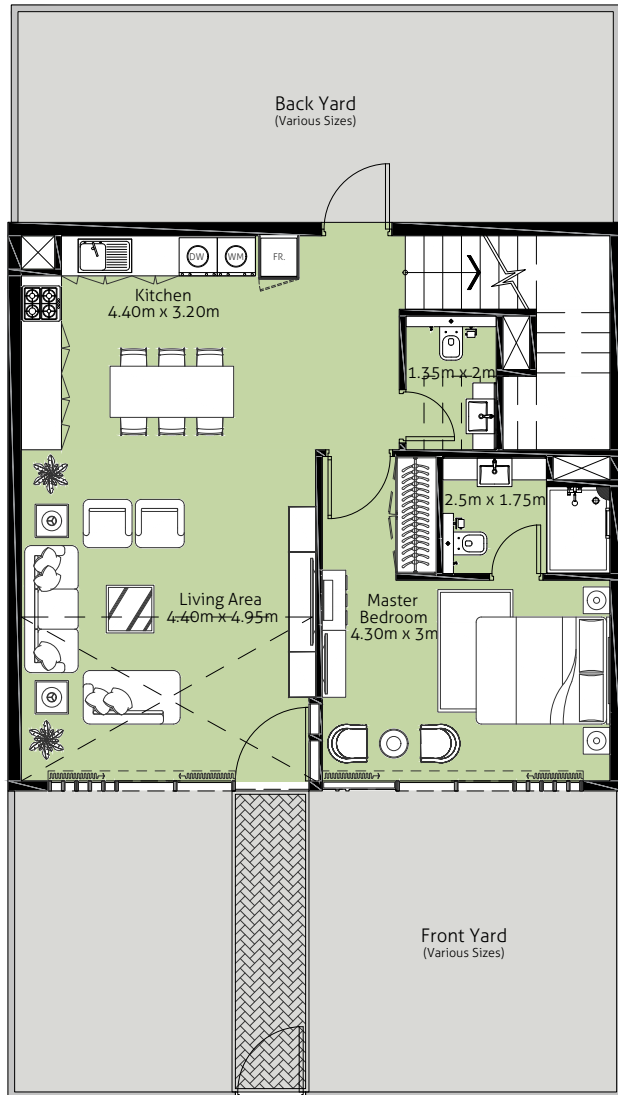
PHASE - 2

RUKAN 2 - LOFTS

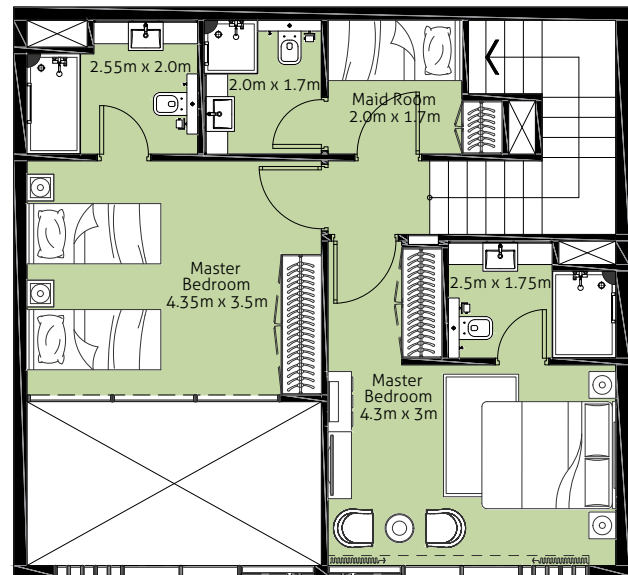


3

BEDROOM TOWN HOUSE + MAID
TYPE-B



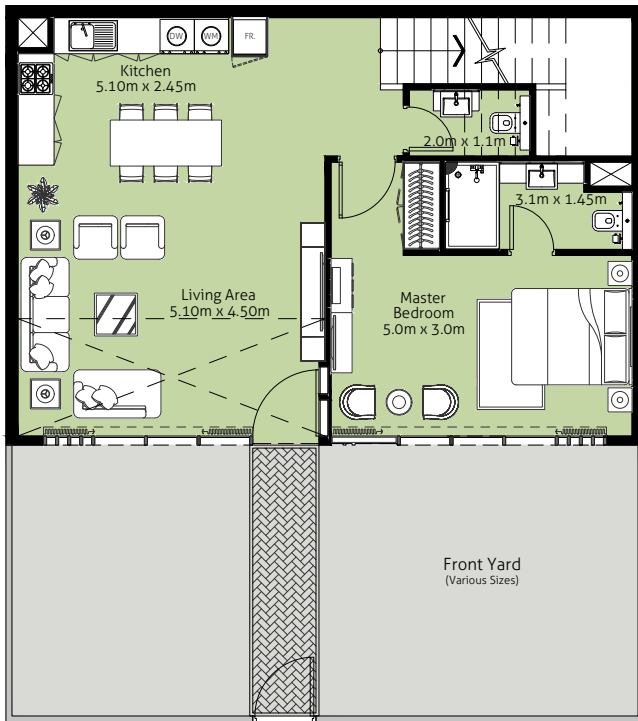
Ground Floor



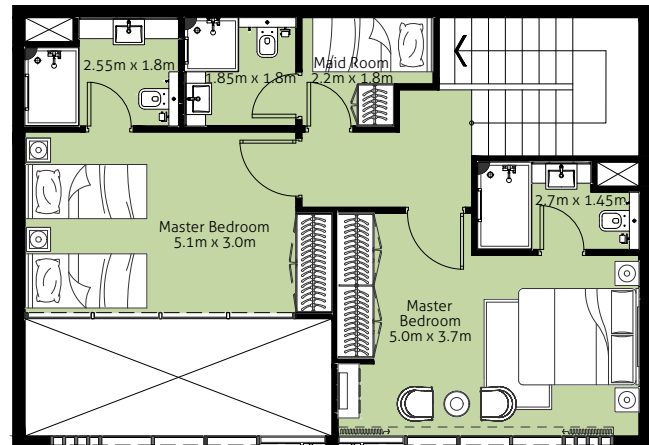
First Floor

3

BEDROOM TOWN HOUSE + MAID
TYPE-C



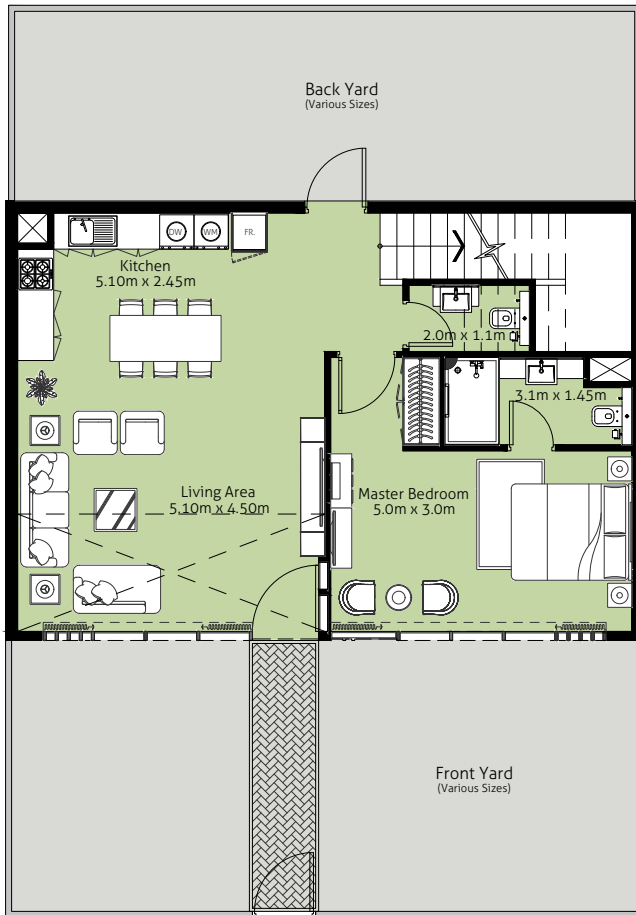
Ground Floor



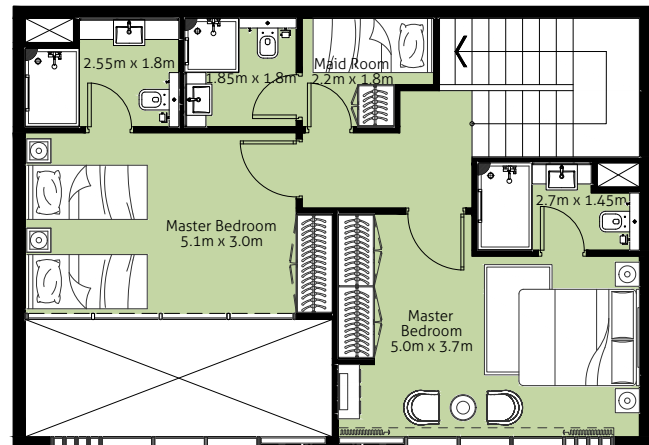
First Floor

3

BEDROOM TOWN HOUSE + MAID
TYPE-D



Ground Floor



First Floor

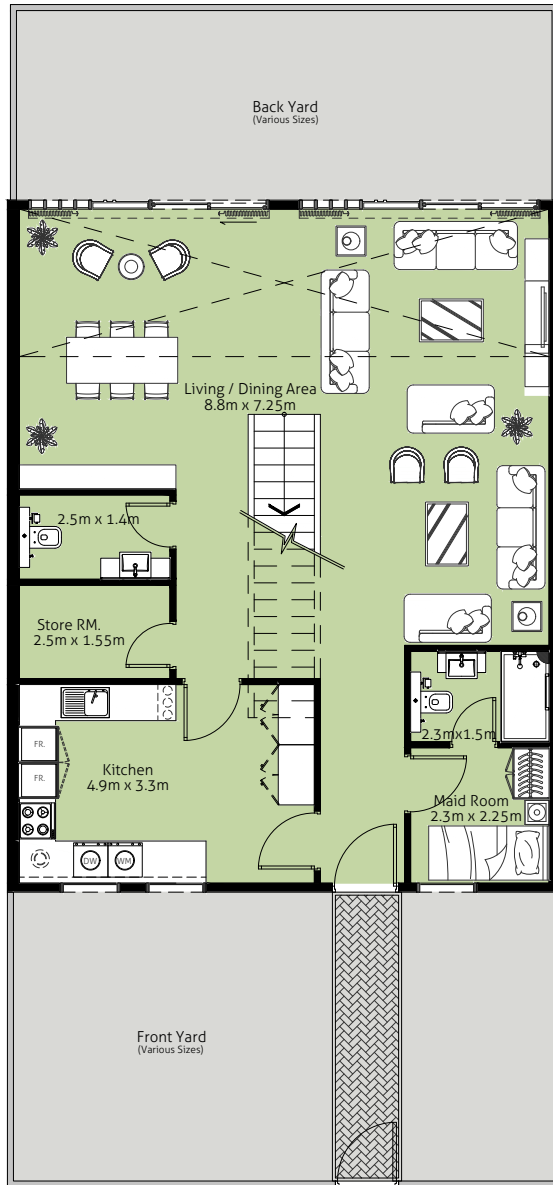
3

BEDROOM TOWN HOUSE + MAID
TYPE-E

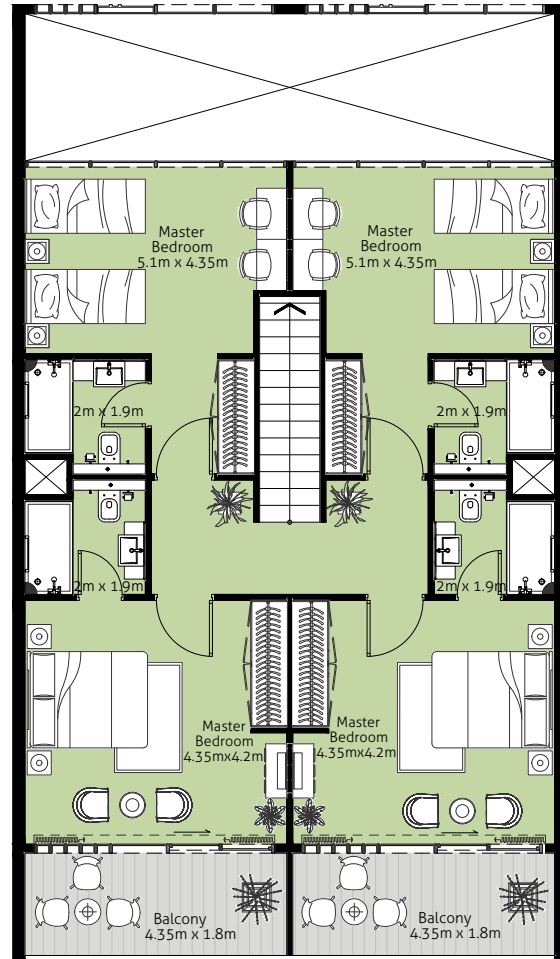


4

BEDROOM TOWN HOUSE + MAID
TYPE-A



Ground Floor

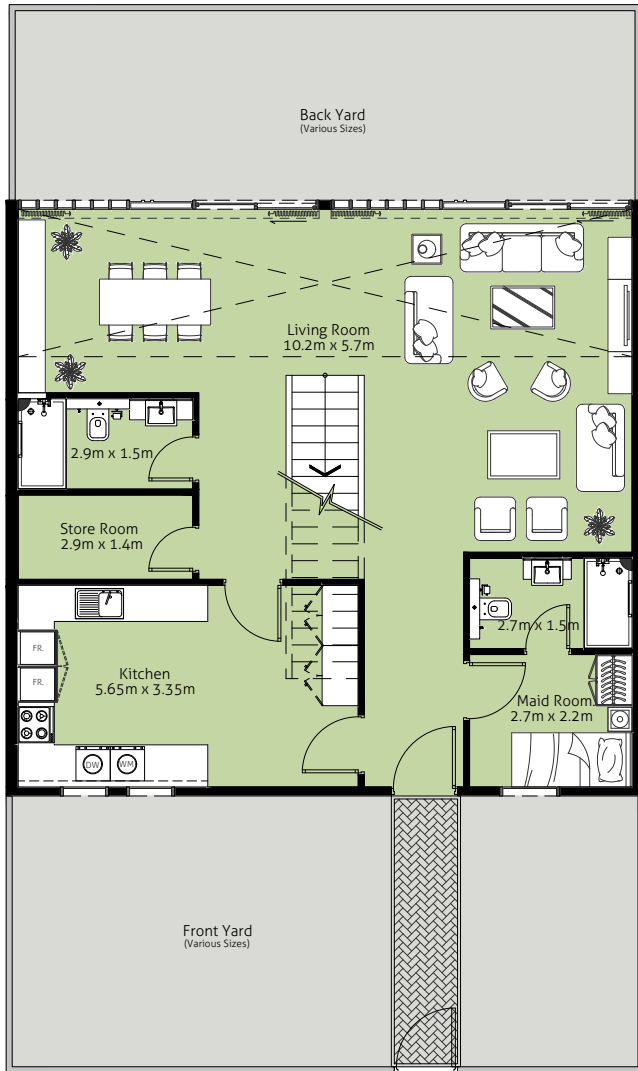


First Floor

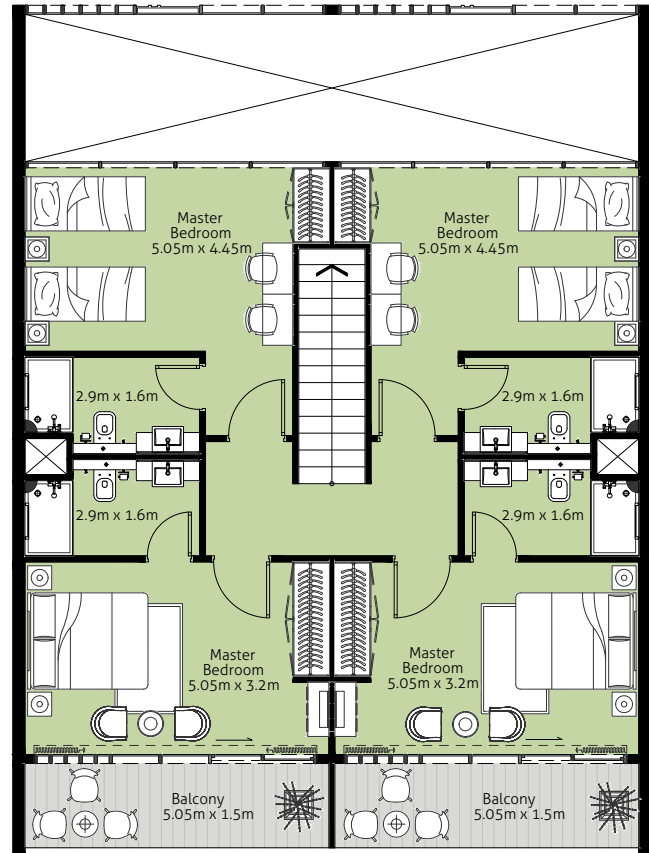
4

BEDROOM TOWN HOUSE + MAID
TYPE-B

PHASE - 2



Ground Floor

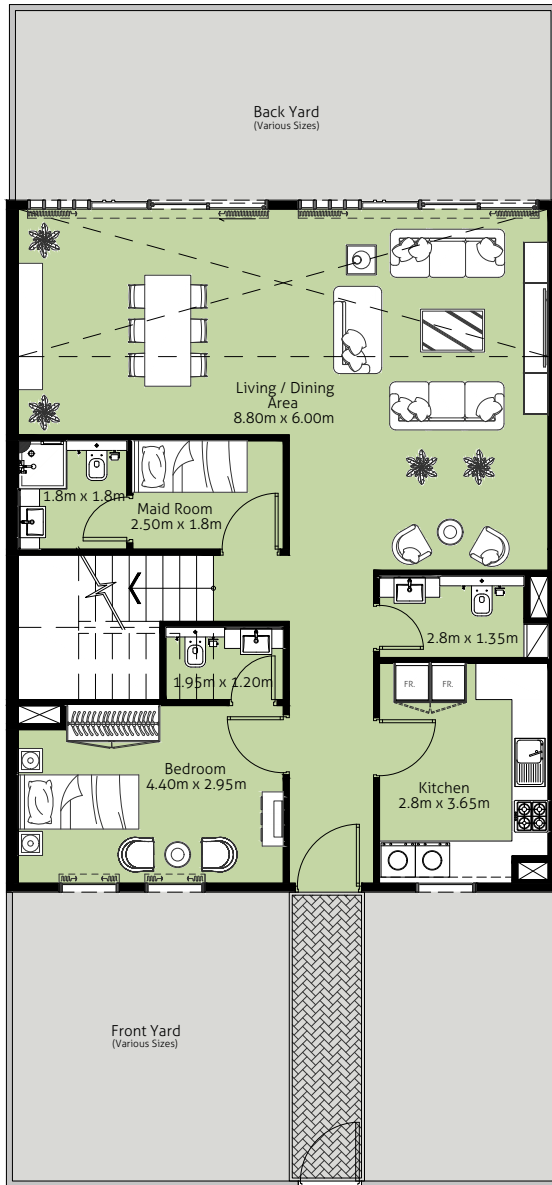


First Floor

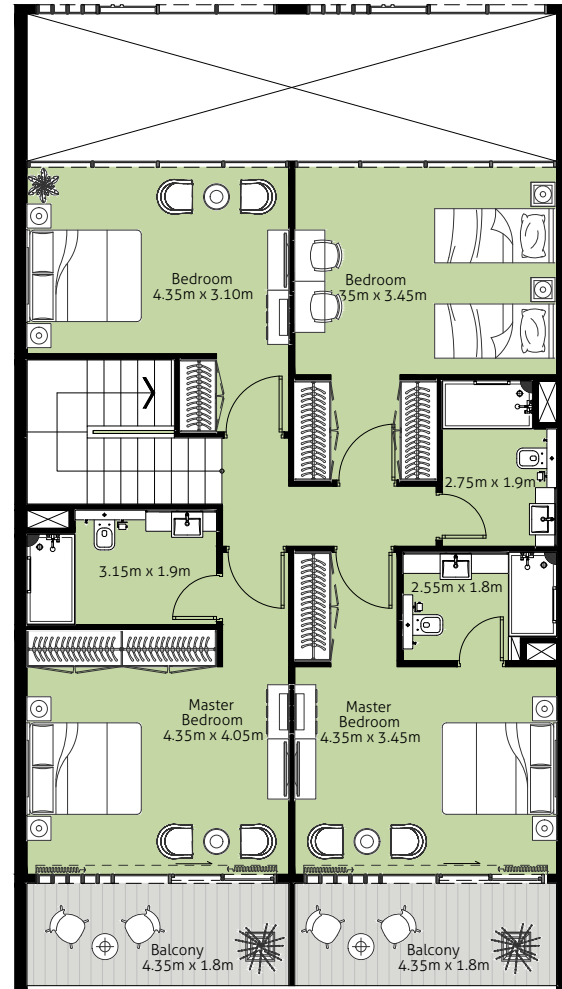
DISCLAIMER "All drawings and dimensions are approximates. Drawings are not to scale and are subjects to change without notice. The developer reserves the right to make revisions. The units are taken from the typical floor of the building and columns may vary in size depending on the floor level. The furnishings and accessories shown are for representation only. The length and width of the unit and balcony varies depending on which floor and which orientation the unit is located within the building to comply with the building authority regulations."



5 BEDROOM TOWN HOUSE + MAID TYPE-A



Ground Floor

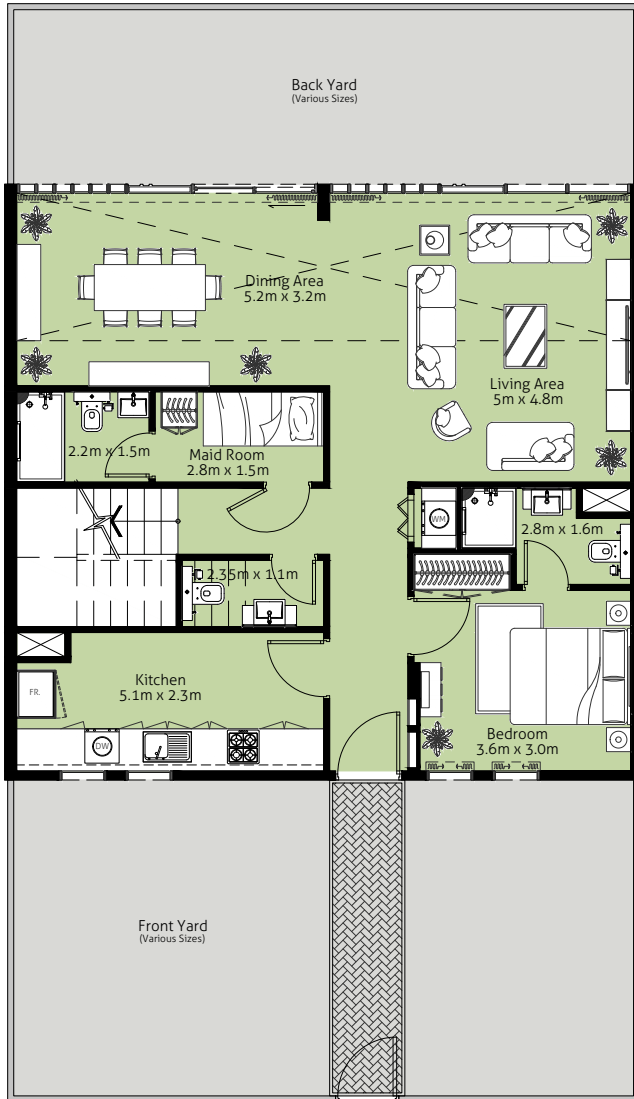


First Floor

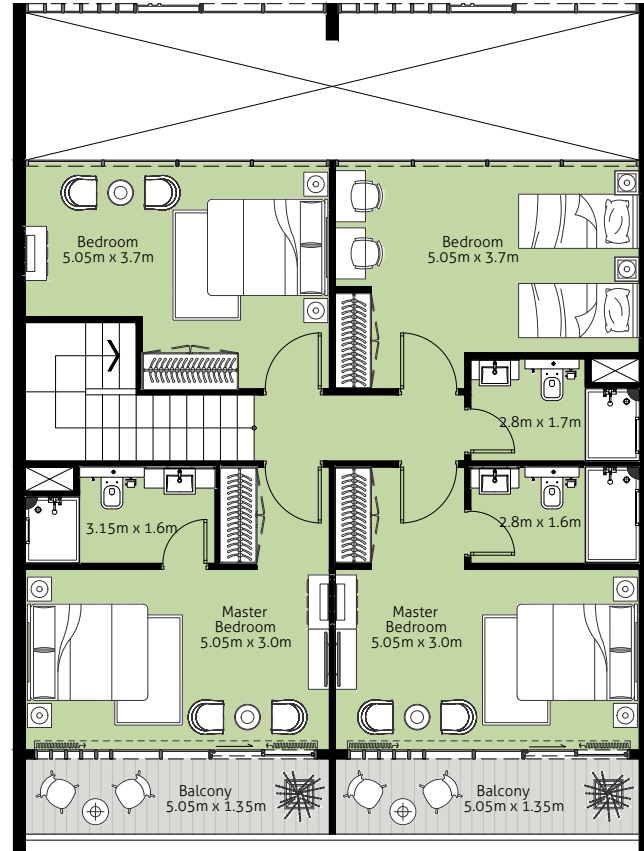
DISCLAIMER "All drawings and dimensions are approximates. Drawings are not to scale and are subjects to change without notice. The developer reserves the right to make revisions. The units are taken from the typical floor of the building and columns may vary in size depending on the floor level. The furnishings and accessories shown are for representation only. The length and width of the unit and balcony varies depending on which floor and which orientation the unit is located within the building to comply with the building authority regulations."

5

BEDROOM TOWN HOUSE + MAID
TYPE-B



Ground Floor



First Floor



ريپورتاج العقارية
Reportage.
Properties

Abu Dhabi | Head Office

Tamouh Tower
27th Floor, Al Reem Island
P.O. Box: 111949
United Arab Emirates
Phone: +971 2 204 3300
info@reportageuae.com

Dubai Office

Oberoi Centre
3rd Floor, Business Bay
P.O. Box: 27446
United Arab Emirates
Phone: +971 4 240 5556
info@reportageuae.com

Account Number - 35911-3931-004
IBAN number - AE980070035911393101004
Beneficiary Name - Rukan 2 Escrow
Currency - AED
Swift code - ARAIAEAD

For more information, visit reportageuae.com
or call 800 7755 2 | +971 50 244 1078



R.