



# REPORTAGE

TOWER

N I G E R I A

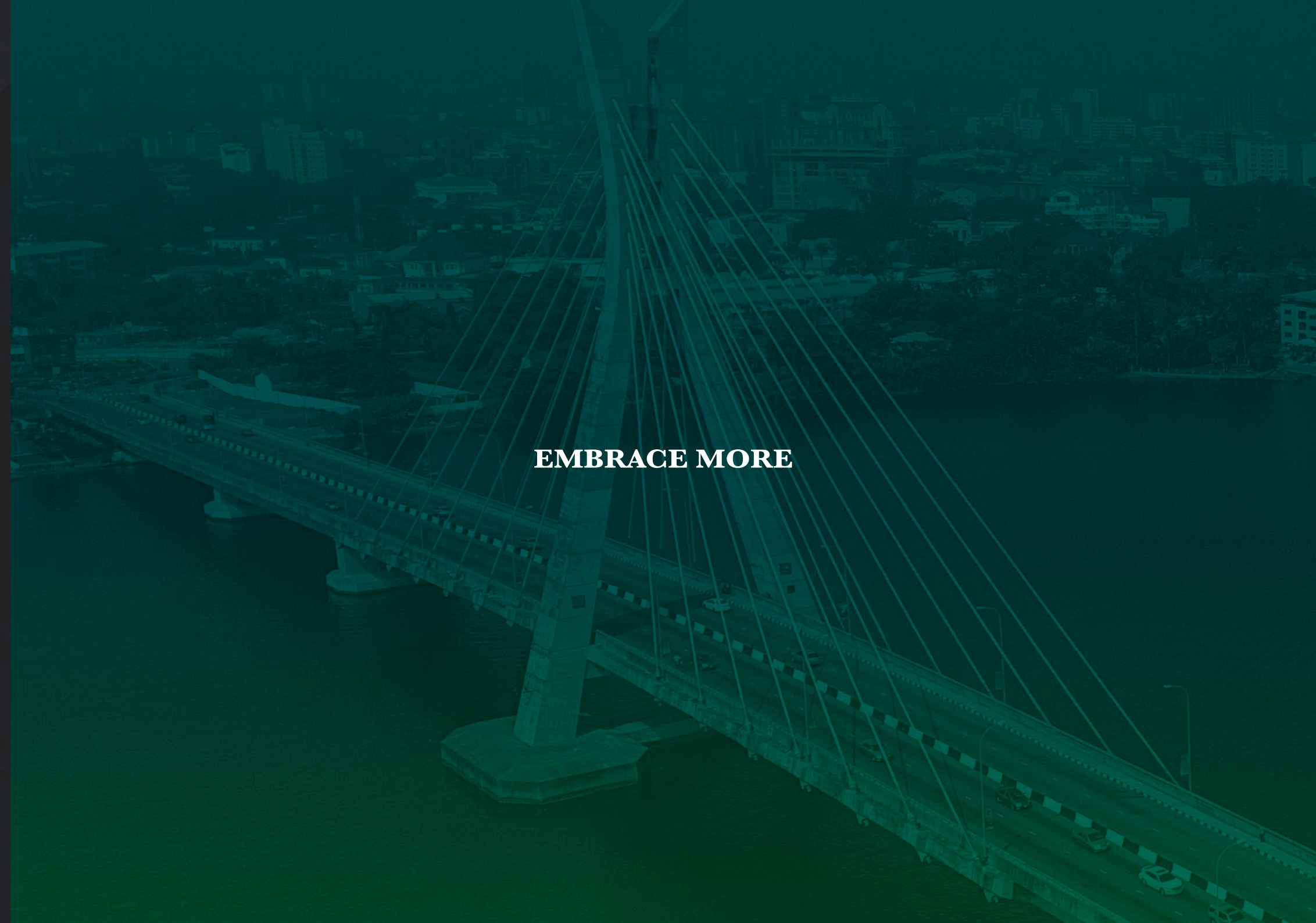


# REPORTAGE

T O W E R

Eko Courts, Victoria Island, Lagos

**EMBRACE MORE**





## ABOUT REPORTAGE

### OWN YOUR STORY

Reportage Group is one of the largest private developers in the United Arab Emirates, with projects in UAE, Egypt, Nigeria, Kenya, Rwanda, Türkiye, Morocco, KSA, Uganda, Azerbaijan, Pakistan and upcoming international projects.

We are focused and consistent in our objective to provide innovative, modern housing solutions that not only offer our investors an outstanding value but also provide the home buyers a safe place to live in.

Our mission is to be amongst the most trusted real estate companies in the world by developing and providing homes that are equally elegant and accessible and provide you with a sense of belonging.

We look forward to the upcoming years, and aspire to expand our real estate business globally.

Building legacies in UAE and beyond since 2014.







Where **HERITAGE** meets  
**POSSIBILITY**



WELCOME TO  
**NIGERIA**

**Nigeria**, proudly known as the Giant of Africa and the continent's beating heart. A land where timeless heritage blends seamlessly with bold ambition, where vibrant cities echo with energy and landscapes offer moments of quiet beauty.

At the center stands **Lagos**, a city that rises to meet the future. Here, skyscrapers embrace the ocean, and music, art, and culture pulse through every street, infusing daily life with rhythm and creativity.

This is a destination of boundless promise, where work transforms into achievement, where living becomes an experience, and where every day begins with fresh energy. In Nigeria, possibility is not imagined; it is lived.

**The future here unfolds without limits.**





# REPORTAGE TOWER

On Ozumba Mbadiwe, at the heart of Victoria Island, Reportage Tower rises as a new landmark, a collection of hotel apartments defined by international standards of hospitality.

Set against Lagos's most prestigious waterfront, it offers sweeping lagoon views, the vibrant pulse of the city, and the prestige of Nigeria's beating heart.

More than a residence, it is a lifestyle, where the privacy of home blends seamlessly with the elegance of hotel living. Here, every day opens to comfort, inspiration, and limitless possibility.

## EMBRACE MORE



**Reportage.**  
MEH Development

A Joint Venture Development between  
**LSDPC** and **ReportageMEH Development**







Everyday Life, Elevated by  
**HOTEL LIVING**





Where Comfort Flows with  
**PRESTIGE**



Live with  
**CITY ENERGY**





Designed for Living, Inspired by  
**LAGOS**







World-class

# AMENITIES

-  Grand reception lobby with concierge-style services
-  Infinity pool with panoramic lagoon views
-  Fully equipped modern gym
-  Podium parking with multi-level access
-  Retail & commercial outlets for shopping and dining
-  Dedicated kids' play area
-  24/7 security and international facility management
-  Advanced security system
-  Jogging track (Parking Area)
-  Pet friendly features
-  Child care facilities
-  Premium housekeeping
-  Conference centres
-  High-end shops
-  Operated by international hotel brand



Your Private Retreat in the  
**HEART OF LAGOS**











Be Active

REPORTAGE  
TOWER

GYM  
MODE  
ON

More Than a Home  
**A LIFESTYLE EXPERIENCE**



## PROJECT DETAILS

- **Type:** High-rise hotel apartments (with commercial & retail units)
- **Plot Area:** 5,689.6 sq.m
- **Total Units:** 611
- **Levels:** 27 floors + G + 3 podium parking





## UNIT MIX

- Studios 183 Apartments
- 1-Bedroom: 205 Apartments
- 2-Bedroom: 159 Apartments
- 3-Bedroom: 46 Apartments
- Commercial units: 18 Units











**Total No. of Units : 611 units**







UNIT  
**FEATURES**

-  Private Balconies / Terraces as per unit plan
-  Kitchen cabinets and countertops
-  Fully-tiled bathrooms and guest toilets wherever applicable
-  En-suite Bedrooms as per plan
-  Double glazed windows
-  Built-in wardrobes in bedrooms
-  Shower in each bathroom
-  Central air conditioning
-  Vanity units & Mirrors
-  Satellite master antenna and fibre optic connection for high-speed internet access



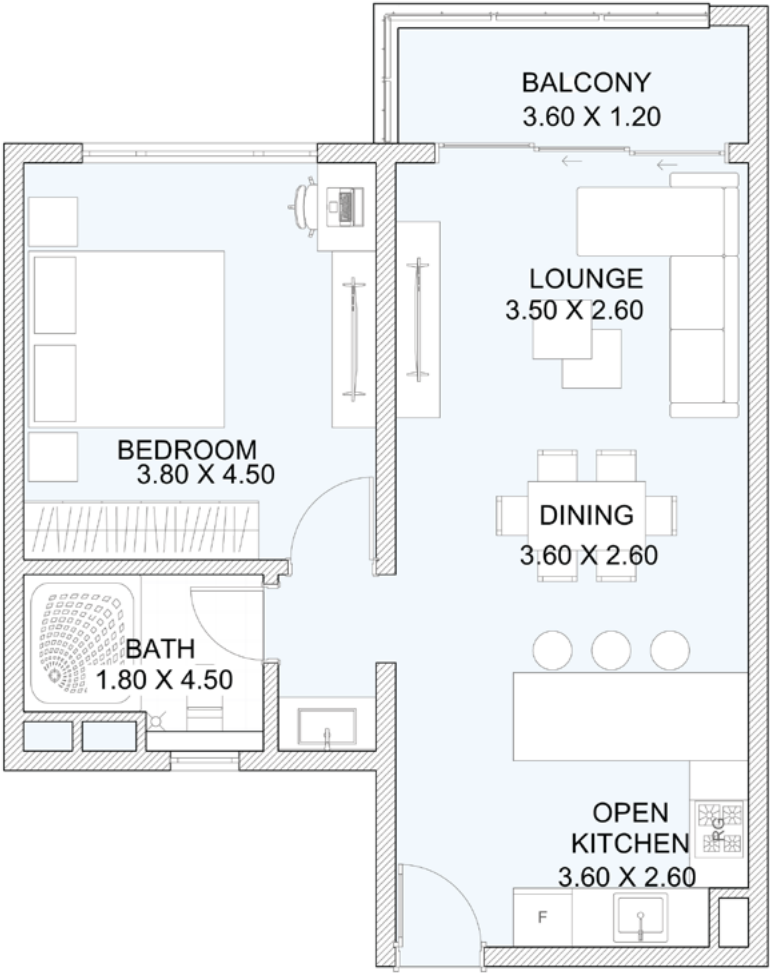
# UNIT TYPES





**STUDIO**  
5th Floor

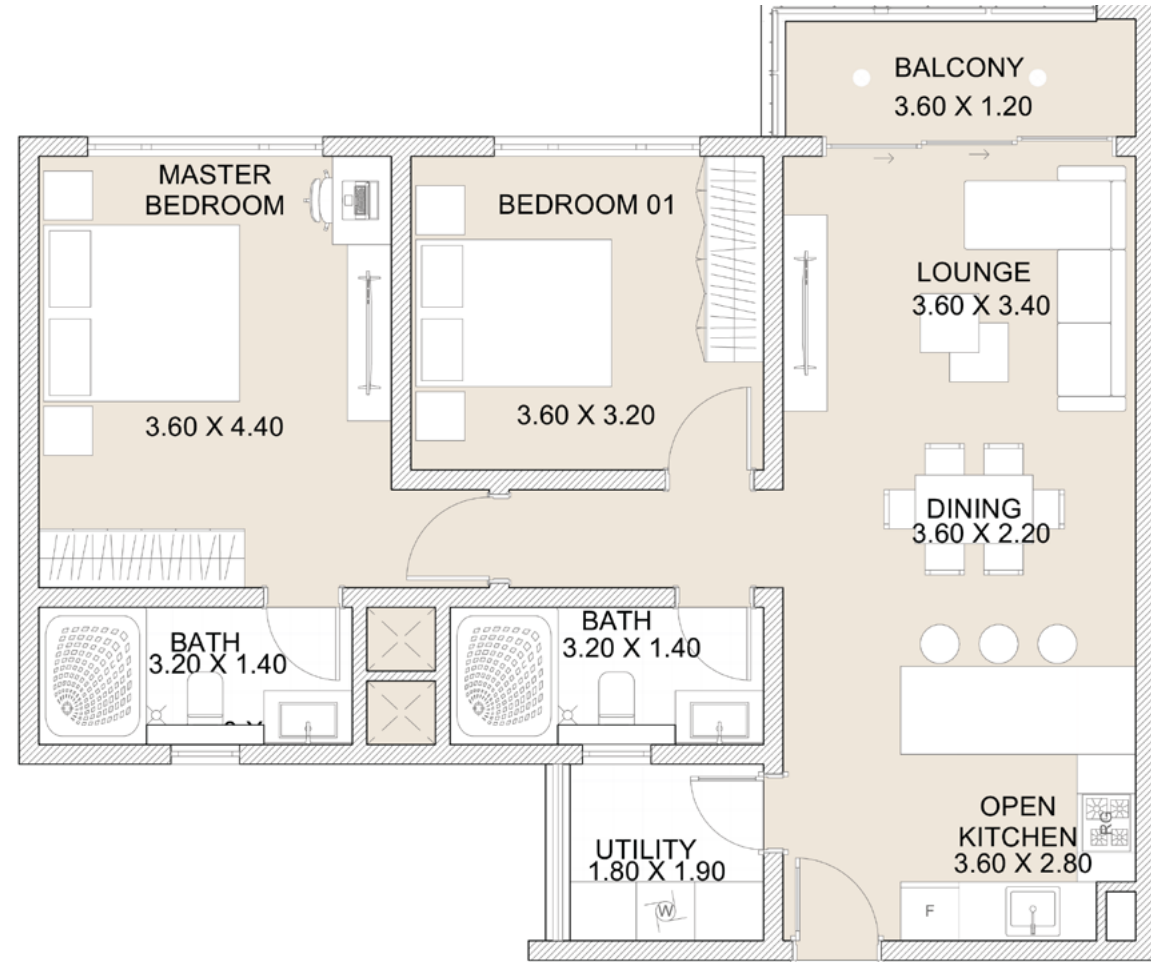
Internal Area	32 sq.m
External Area	-
<b>Total Area</b>	<b>32 sq.m</b>



**1B**  
5th Floor

Internal Area	57 sq.m
External Area	5 sq.m
<b>Total Area</b>	<b>62 sq.m</b>

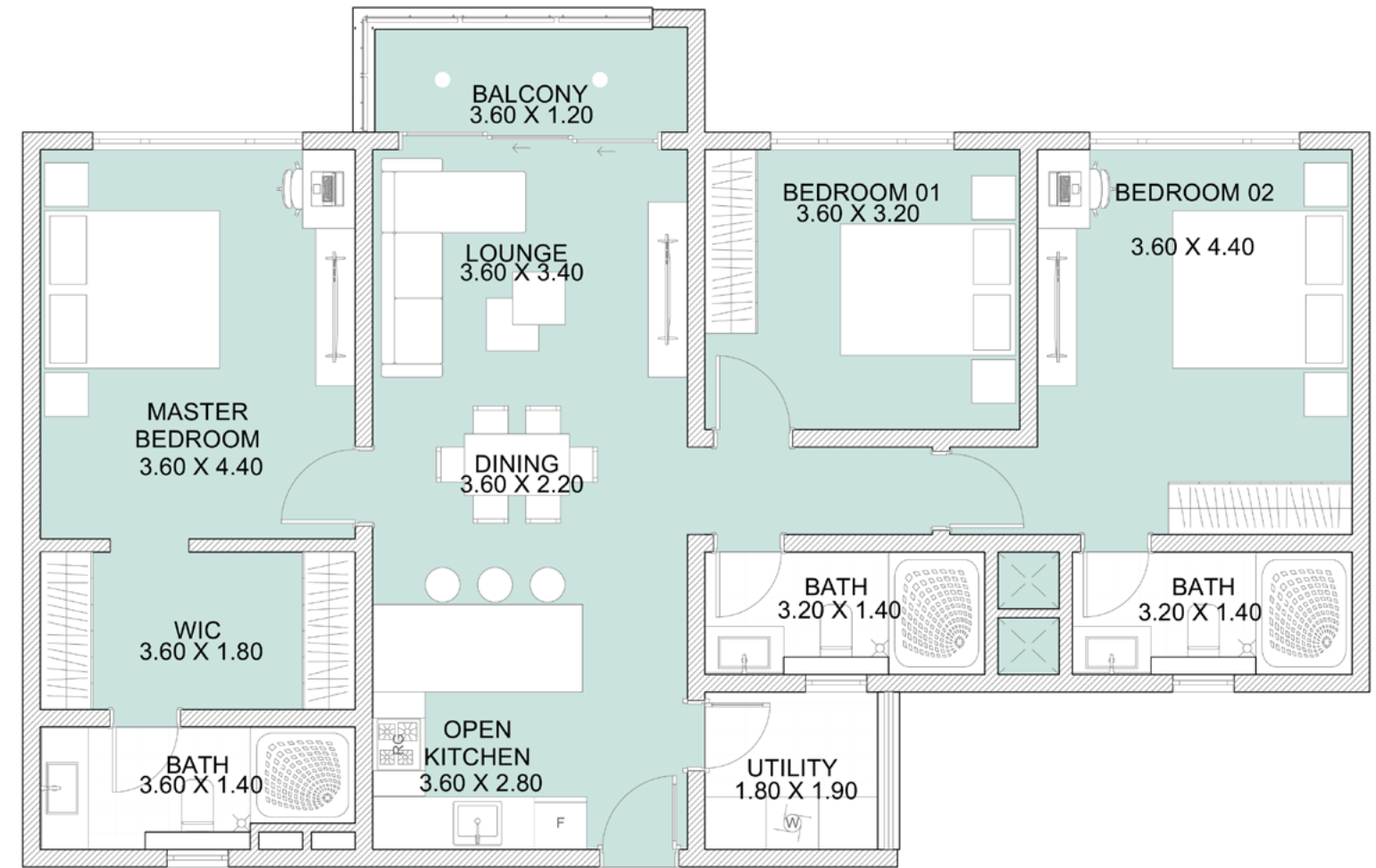




## 2B

5th Floor

Internal Area	87 sq.m
External Area	5 sq.m
<b>Total Area</b>	<b>92 sq.m</b>



## 3B

6th Floor

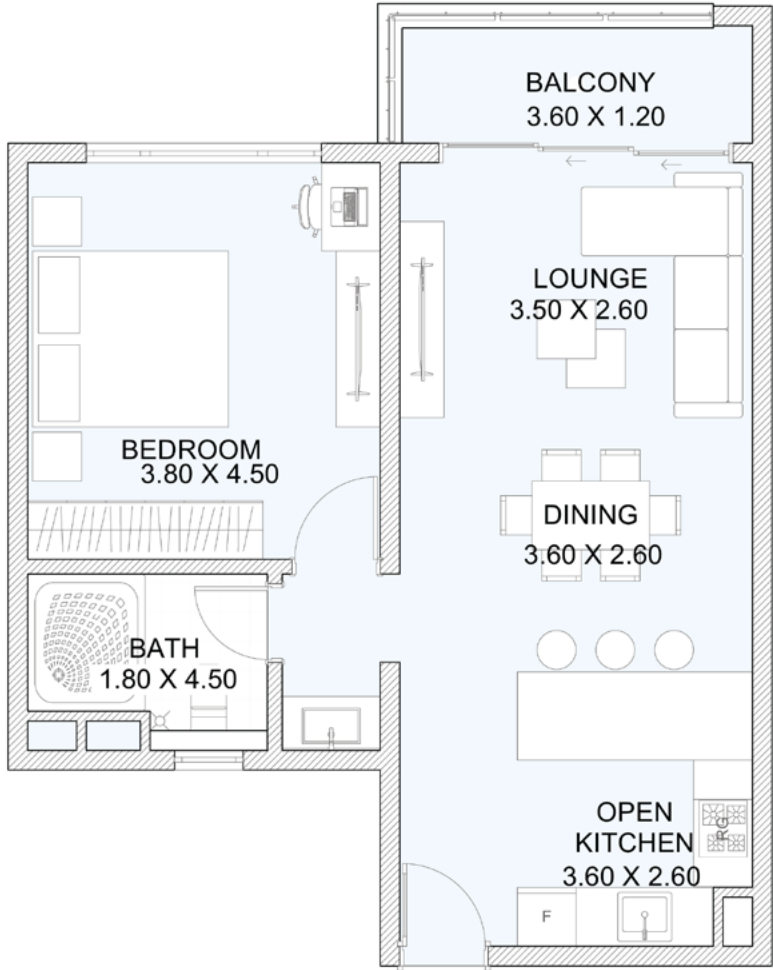
Internal Area	117 sq.m
External Area	5 sq.m
<b>Total Area</b>	<b>122 sq.m</b>





**STUDIO**  
6th Floor

Internal Area	32 sq.m
External Area	-
<b>Total Area</b>	<b>32 sq.m</b>

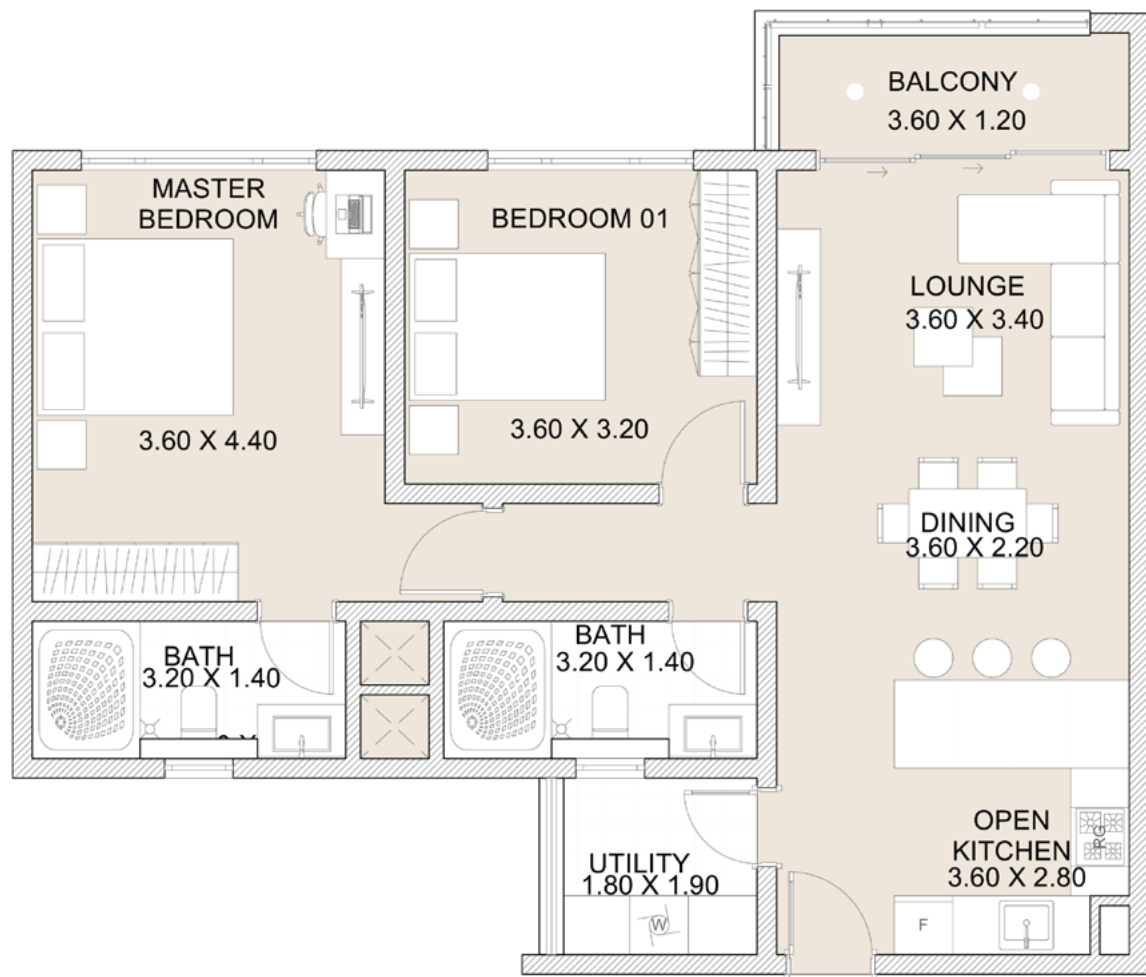


**1B**  
6th Floor

Internal Area	57 sq.m
External Area	5 sq.m
<b>Total Area</b>	<b>62 sq.m</b>



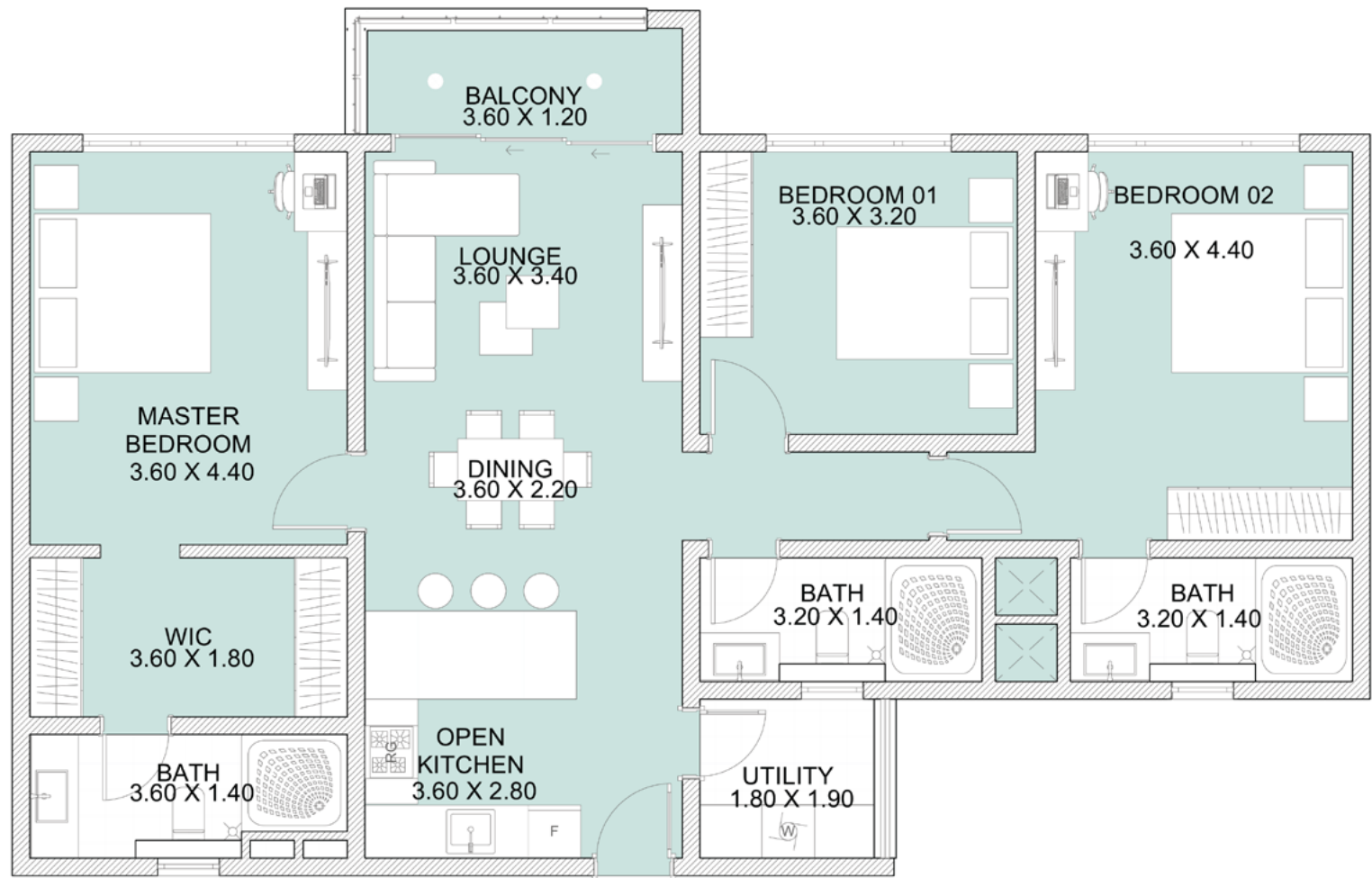




## 2B

6th Floor

Internal Area	87 sq.m
External Area	5 sq.m
<b>Total Area</b>	<b>92 sq.m</b>



## 3B

6th Floor

Internal Area	117 sq.m
External Area	5 sq.m
<b>Total Area</b>	<b>122 sq.m</b>

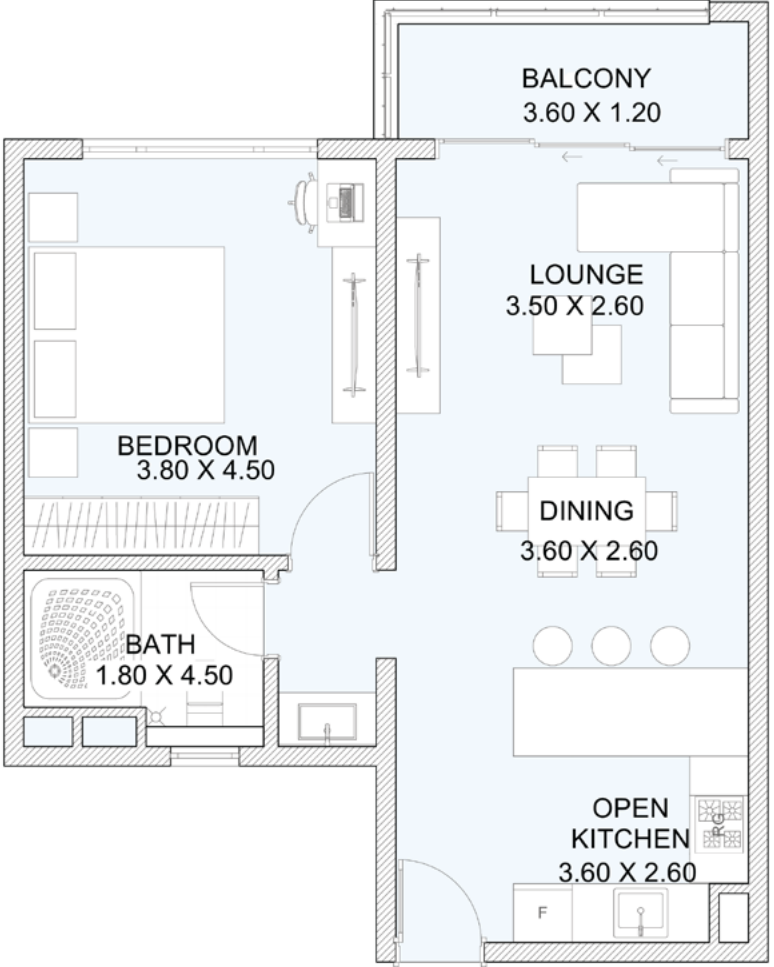




### STUDIO

From 7th Floor to 27th Floor

Internal Area	32 sq.m
External Area	-
<b>Total Area</b>	<b>32 sq.m</b>

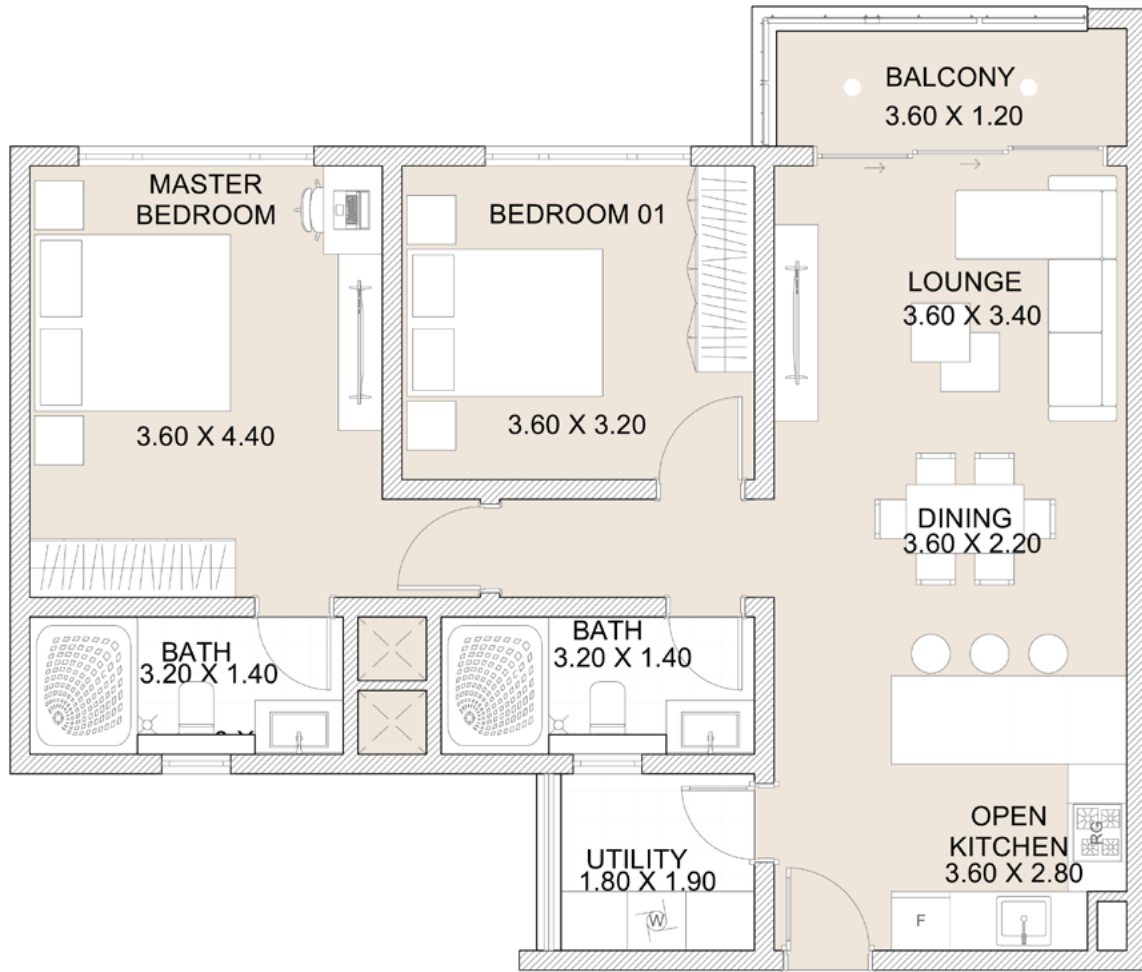


### 1B

From 7th Floor to 27th Floor

Internal Area	57 sq.m
External Area	5 sq.m
<b>Total Area</b>	<b>62 sq.m</b>

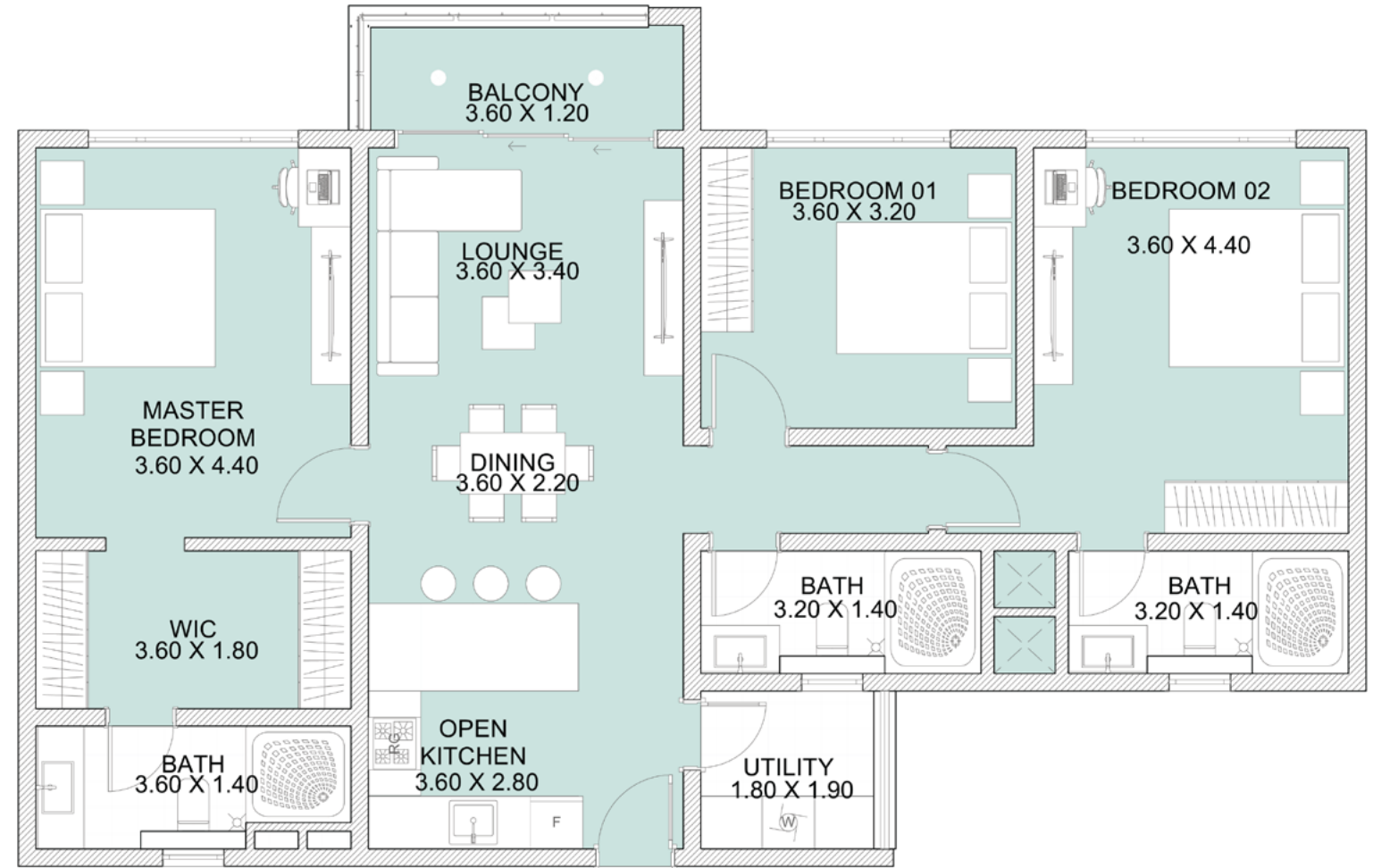




## 2B

From 7th Floor to 27th Floor

Internal Area	87 sq.m
External Area	5 sq.m
<b>Total Area</b>	<b>92 sq.m</b>



## 3B

From 7th Floor to 27th Floor

Internal Area	117 sq.m
External Area	5 sq.m
<b>Total Area</b>	<b>122 sq.m</b>





# Reportage.

**Lagos, Nigeria**  
No. 2 Obudu Close, Osborne Foreshore Estate,  
Phase 1, Ikoyi, Lagos Nigeria  
+234 810 859 9924  
Info@reportage.ng

**Nairobi, Kenya**  
46 Kabasiran, Lavington  
P.O. box 38802-00623  
Tel. +254 754 108108 / +254 208 108108

**Abu Dhabi-UAE | Head Office**  
Tamouh Tower  
28<sup>th</sup> Floor, Al Reem Island  
P.O. Box: 111949  
Tollfree: +971 800 77 55 2  
info@reportageuae.com

**Dubai-UAE**  
Anantara Business Tower  
3<sup>rd</sup> Floor, Business Bay  
P.O. Box: 27446  
Tollfree: +971 800 77 55 2  
info@reportageuae.com

**Cairo-Egypt**  
Building 217  
North Teseen St.  
New Cairo  
T: +20 12 0008 1190  
info@reportageeg.com

**Istanbul-Türkiye**  
Maslak Mh. Sümer Sk.  
No:4, İç Kapı No:3, Bodrum Kat,  
Maslak Office Building ( MOB) Sanyer  
T: +90 530 774 9595  
info@reportage.com.tr

**Riyadh-KSA**  
Building No. 3230  
Al Aflaj St., Al Suwaidi  
P.O. Box 12791  
T: +966 11 215 1110  
info@reportageuae.com

**Moscow-Russia**  
Yefremova Street 10s1, k4/4  
bld sadovye kvartaly  
P.O. Box 119048  
info@reportagerussia.com

**Kampala, Uganda**  
Plot 4, Philip Road  
Near German Embassy  
Kololo, Kampala, Uganda  
+256 756 111 434 | +256 763 331 572  
info@reportageug.com

**Lahore - Pakistan**  
Plaza No. 185, Broadway  
Commercial phase 8, DHA Lahore  
+923309991111  
Info@reportageempire.com

**Kigali, Rwanda**  
KG 334 ST 10, Nyarutarama,  
Kigali, Rwanda  
+250738532168 | +250794100607  
info@reportagerw.com



REPORTAGE  
TOWER

For more information, visit [reportageuae.com](http://reportageuae.com)  
or call 800 77 55 2 | +971 50 244 1078



Legal Disclaimer:

The information contained in this brochure is confidential and is for the exclusive use of the recipient. This brochure may not be reproduced, distributed, delivered, or furnished to any person without the prior written approval of Reportage Properties. No representation or warranty (expressed or implied) is made or can be given with respect to the accuracy or completeness of the information herein, or that any future offer of units or apartments in the project will conform to the terms described herein. Nothing in this leaflet should be construed as financial, legal, tax or regulatory advice. All accessories such as electronics, furniture, white goods, decorative elements and so forth included in this brochure are not part of the standard unit and used for illustration purposes only. All plans, layouts, pictures, renderings, information and details included in this brochure are indicative only and may change at any time up to the final 'as built' status in accordance with final designs of the project and regulatory approvals and planning permissions.



**Reportage.**  
MEH Development