

INSPIRATION SURROUNDS

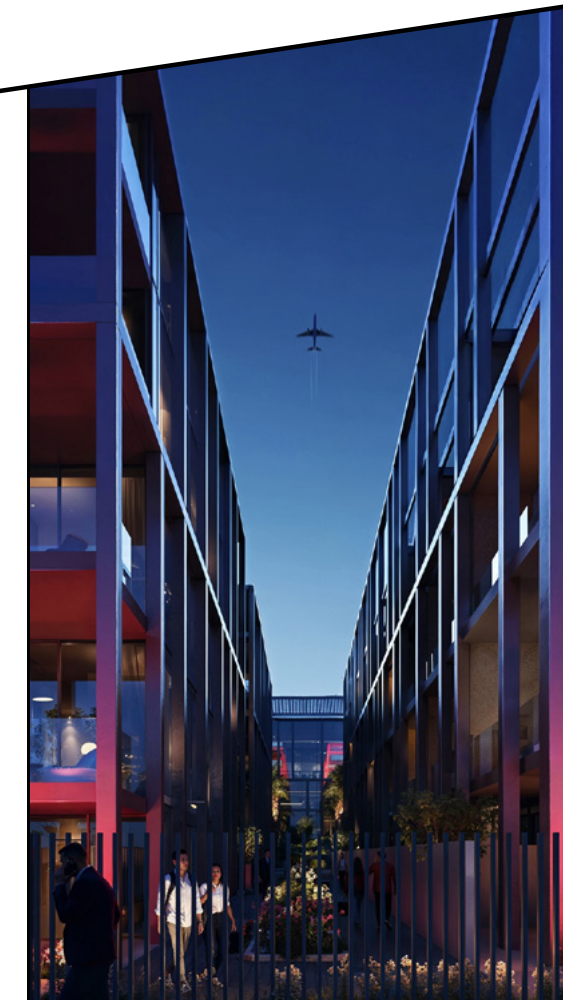
Sensi is not just a development, it's a state of being.

On the shores of Saadiyat Island, where culture, nature, and sophistication converge, Sensi emerges as a sanctuary for those who feel more, seek more, and expect more from the places they reside in.

We believe in the quiet power of elegance, in style that whispers, not shouts. In spaces that stir the senses and ground the soul.



A place to feel.
A space to create.



Sensi is more than a place to live, it's a canvas for life...
Where every detail is curated to stir something within.

Not rushed. Not loud. But meaningful.

Because to live well is to live with feeling, and to feel is to be inspired.

INSPIRATION SURROUNDS





At the Heart
of Art & Culture

SAADIYAT ISLAND, ABU DHABI

A living gallery, curated by time, culture, and vision.

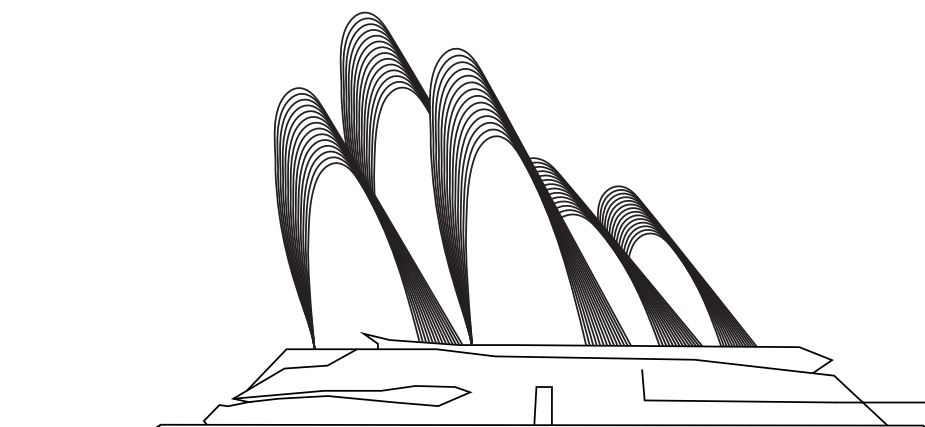
Here, the world's greatest artistic voices find a home beside the sea, where architecture becomes sculpture and museums become bridges between civilizations.

From the quiet poetry of the Louvre Abu Dhabi to the bold future vision of the Guggenheim, Saadiyat stands as a global crossroads of creativity, where East and West speak a shared language of art.

It is an island where ideas are preserved, challenged, and reborn, where culture is not observed from a distance, but lived, breathed, and felt.

On Saadiyat, inspiration is not an event; it is a way of life.





ZAYED NATIONAL MUSEUM

A tribute to the founding father of the UAE, Sheikh Zayed bin Sultan Al Nahyan. A place where heritage, leadership, and vision converge. It tells the story of a nation shaped by values of unity, resilience, and progress, preserving the past while inspiring generations to come.

More than a museum, it is a symbol of identity and continuity, rooted deeply in the spirit of the Emirates.

“A nation without a past is a nation without a present or a future”

Sheikh Zayed bin Sultan Al Nahyan

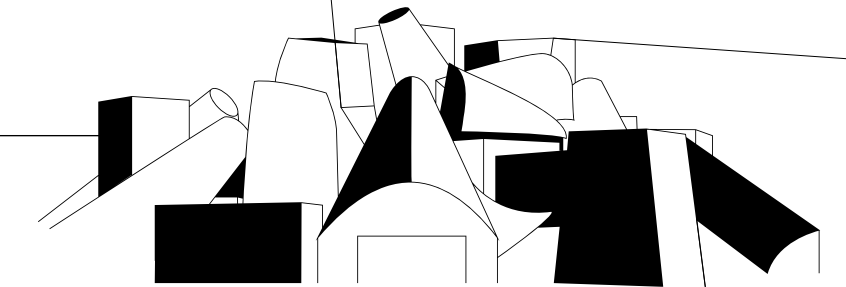


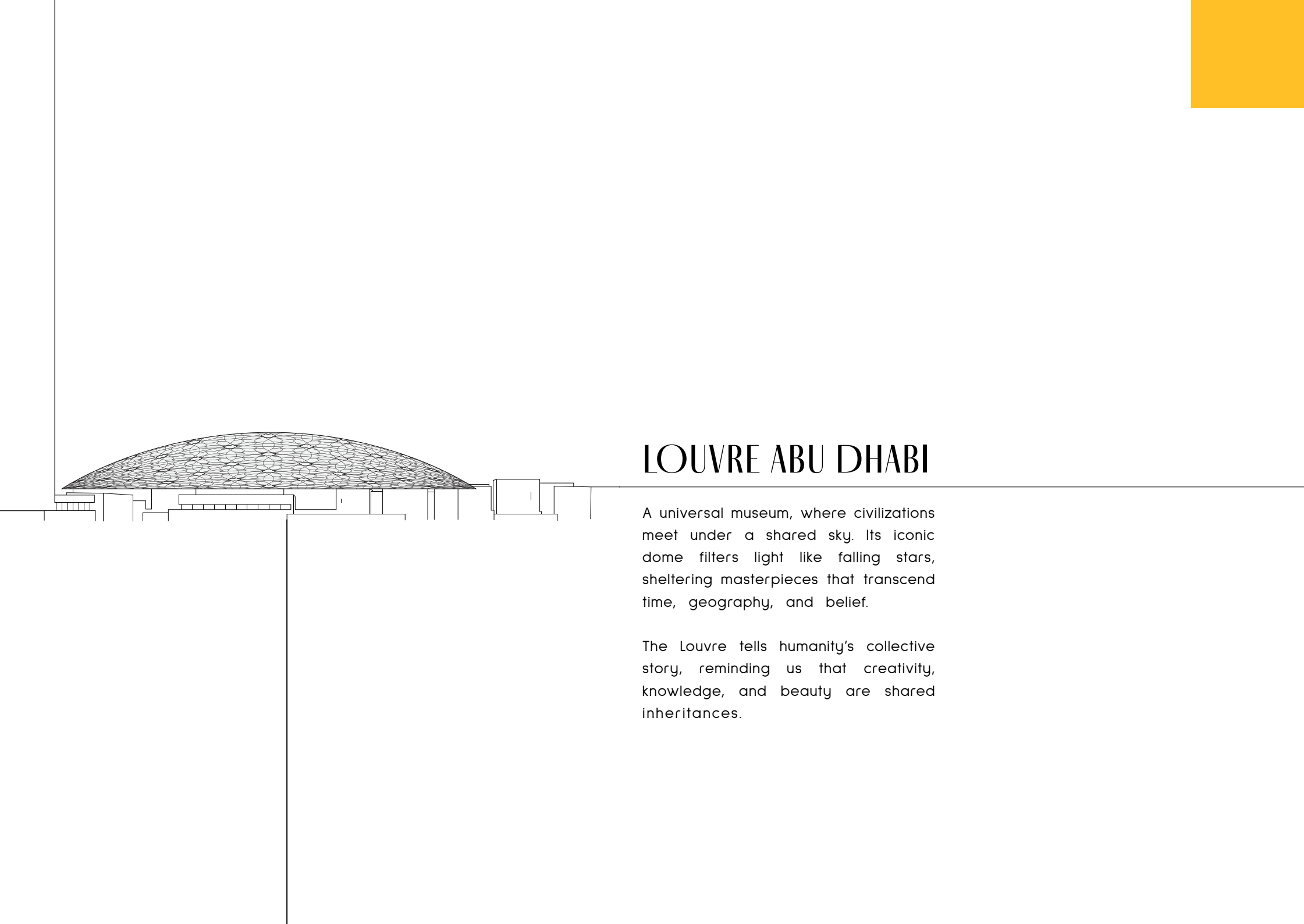


GUGGENHEIM ABU DHABI

A bold statement of contemporary thought. Dedicated to modern and contemporary art from across the globe, it is a platform for fearless expression, new narratives, and cultural dialogue.

Here, art challenges perception, sparks conversation, and reflects the evolving voice of a connected world.





LOUVRE ABU DHABI

A universal museum, where civilizations meet under a shared sky. Its iconic dome filters light like falling stars, sheltering masterpieces that transcend time, geography, and belief.

The Louvre tells humanity’s collective story, reminding us that creativity, knowledge, and beauty are shared inheritances.



A LIFE DESIGNED BY INSPIRATION

At Sensi, life unfolds slowly and meaningfully. Light moves gently across the canvas of life. Ideas gather naturally. Every detail is considered, not to impress, but to inspire.

This is living without rush. With purpose.

Because to live well is to live with feeling. And to feel... is to be inspired.

WHERE CULTURE BECOMES HOME





WHAT IS IT THAT DEFINES A VISION?

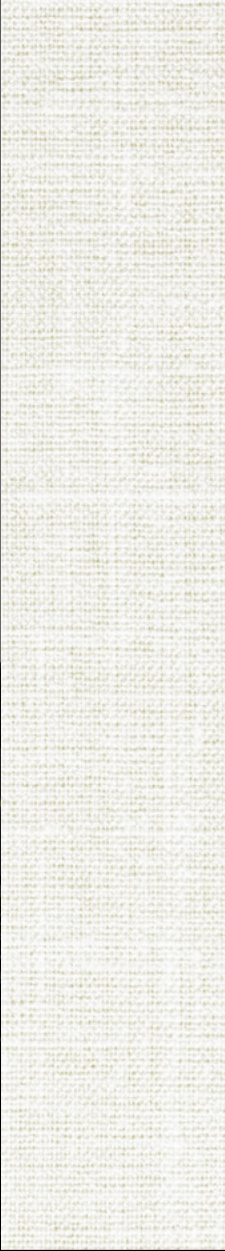
Sensi is shaped by light-filled spaces, where natural light becomes an essential design element, softening geometry and enhancing the sense of openness throughout.

The architecture follows a minimalist approach with intention, allowing clarity of form, balance, and proportion to define the experience without excess.



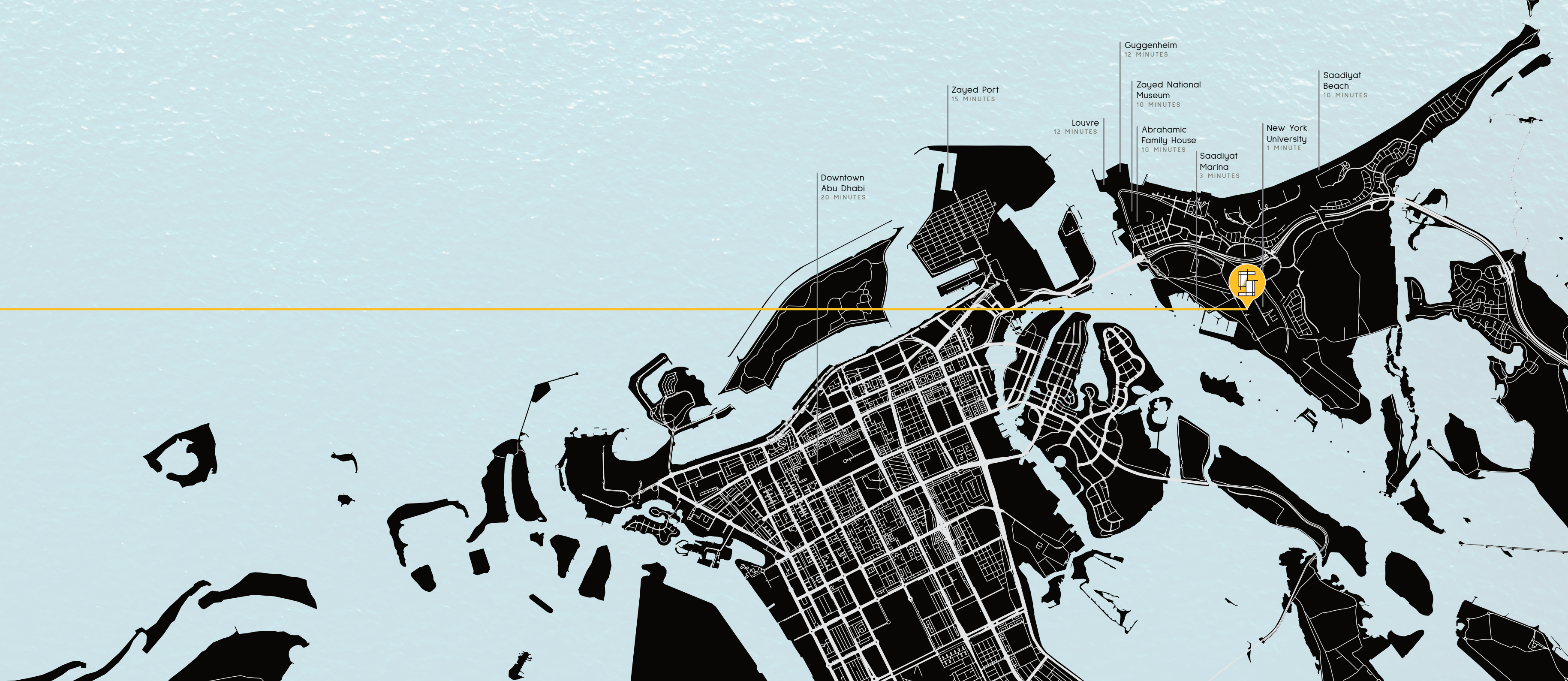
A strong sense of balance and clarity guides every spatial decision, creating harmony between structure and flow, privacy and connection.

The design is inherently seamless, blurring the boundaries between interior and exterior, private and communal, to create an effortless and intuitive living experience.



AN ISLAND OF CULTURE

Perfectly positioned on Saadiyat Island, Sensi places you minutes away from the UAE's most celebrated cultural, educational, and lifestyle landmarks.



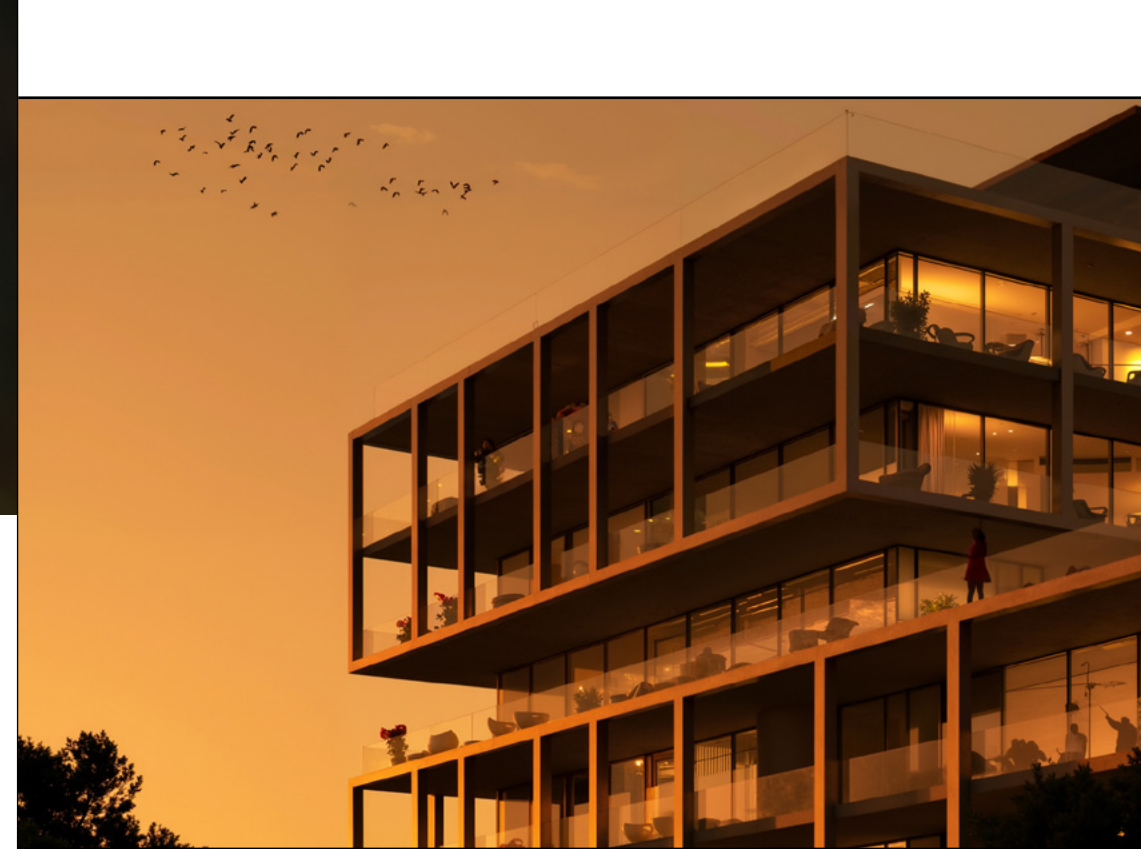


A PLACE THAT SPEAKS IN FEELING



THE COMMUNITY

Type:	Mixed-Use Development Residential, Retail & Lifestyle Living
Assortment:	Villas, Apartments & Commercial Spaces
Plot Area:	5,423.86 sq.m.
Total Units:	89 Residences



THE BUILDINGS

Residential Towers Comprised of:

3 Basements + Ground + 7 Floors

Basement + Ground + 3 Floors

Ground + 4 Floors + Roof

RESIDENCES THAT REFLECT YOU

Every residence at Sensi is designed to enhance daily living through refined functionality and understated luxury.









SCAN TO VIEW FLOOR PLANS
& UNIT TYPES

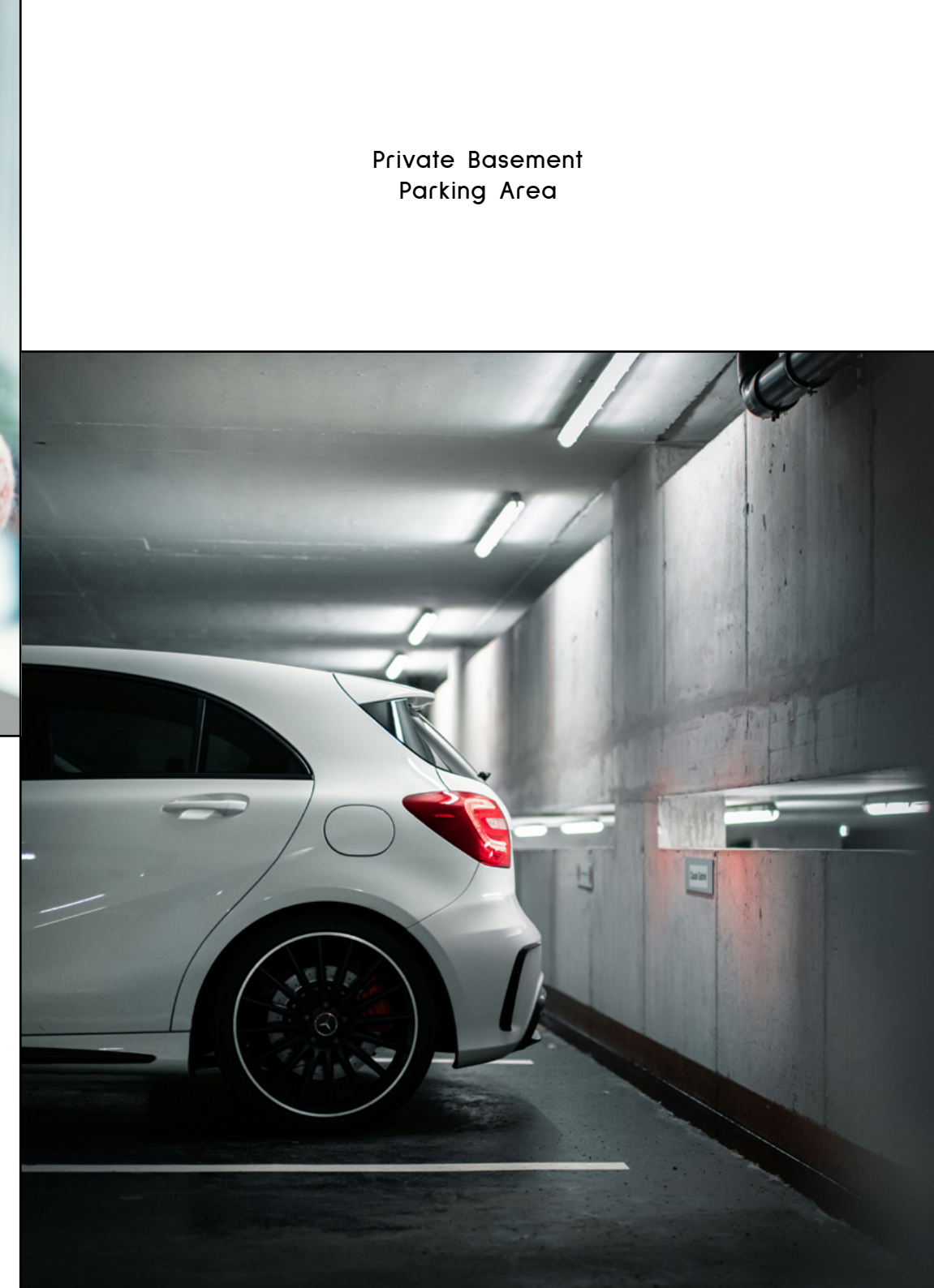


UNIT FEATURES

Contemporary Fit-Out
& Finishing



Laundry Room &
Maids Rooms Available



Private Basement
Parking Area

Private Balconies
& Terraces



AMENITIES THAT ELEVATE EVERYDAY LIFE

Sensi offers a curated selection of amenities designed for balance, wellness, and connection

	Swimming Pool
Fully-Equipped Gym	
	Children's Play Areas
Landscaped Outdoor Gardens	
	Business Center
Retail Spaces	
	Cafés
324 Basement Parking Spaces	

A REFINED SELECTION OF RESIDENCES
TO SUIT DIFFERENT LIFESTYLES

43

2 Bedroom Apartments

37

3 Bedroom Apartments

9

4 Bedroom Townhouses

A Total of 89 Exclusive Residences



WHERE INSPIRATION SURROUNDS

A place for those who live with intention, Who value beauty in restraint and who believe in being enveloped by inspiration.



At Reportage Group, we're proud to be one of the largest private real estate developers in the United Arab Emirates, with projects spanning the UAE, USA, Egypt, Turkey, Saudi Arabia, Uganda, Azerbaijan, Pakistan, and more international markets on the way.

Our focus is clear and consistent: to deliver innovative, sustainable and accessible modern housing solutions that provide outstanding value for investors and a safe, welcoming home for everyone.

Our mission is to be among the most trusted real estate companies in the world, developing homes that are both modern and attainable, while fostering a true sense of belonging. We're excited for what the future holds and remain committed to expanding our footprint across the globe.

Reportage.

Abu Dhabi-UAE | Head Office

Tamouh Tower
28th Floor, Al Reem Island
P.O. Box: 111949
Tollfree: +971 800 77 55 2
info@reportageuae.com

Baku, Azerbaijan

Azerbaijan, Baku City,
Uzeyir Hajibəyov 33 street
+994 10 236 40 46
Info@reportageaz.com

Dubai-UAE

Anantara Business Tower
3rd Floor, Business Bay
P.O. Box: 27446
Tollfree: +971 800 77 55 2
info@reportageuae.com

Cairo-Egypt

Building 217
North Teseen St.
New Cairo
T: +20 12 0008 1190
info@reportageeg.com

Istanbul-Türkiye

Maslak Mh. Sümer Sk.
No:4, İç Kapı No:3, Bodrum Kat,
Maslak Office Building (MOB) Sarıyer
T: +90 530 774 9595
info@reportage.com.tr

Riyadh-KSA

Building No. 3230
Al Aflaj St., Al Suwaidi
P.O. Box 12791
T: +966 11 215 1110
info@reportageuae.com

Moscow-Russia

Yefremova Street 10s1, k4/4
bld sadovye kvartaly
P.O. Box 119048
info@reportagerussia.com

Kampala, Uganda

Plot 4, Philip Road
Near German Embassy
Kololo, Kampala, Uganda
+256 756 111 434 | +256 763 331 572
info@reportageug.com

Lahore - Pakistan

Plaza No. 185, Broadway
Commercial phase 8, DHA Lahore
+923309991111
Info@reportageempire.com

Kigali, Rwanda

KG 334 ST 10, Nyarutarama,
Kigali, Rwanda
+250738532168 | +250794100607
info@reportagerw.com

Nairobi, Kenya

46 Kabasiran, Lavington
P.O. box 38802-00623
Tel. +254 754 108108 / +254 208 108108

Lagos, Nigeria

No. 2 Obudu Close, Osborne Foreshore
Estate, Phase 1, Ikoyi, Lagos Nigeria
+234 810 859 9924
Info@reportage.ng

For more information, visit reportageuae.com or call
800 77 55 2 | +971 50 244 1078



Legal Disclaimer:

The information contained in this brochure is confidential and is for the exclusive use of the recipient. This brochure may not be reproduced, distributed, delivered, or furnished to any person without the prior written approval of Reportage Properties. No representation or warranty (expressed or implied) is made or can be given with respect to the accuracy or completeness of the information herein, or that any future offer of units or apartments in the project will conform to the terms described herein. Nothing in this leaflet should be constructed as financial, legal, tax or regulatory advice. All accessories such as electronics, furniture, white goods, decorative elements and so forth included in this brochure are not part of the standard unit and used for illustration purposes only. All plans, layouts, pictures, renderings, information and details included in this brochure are indicative only and may change at any time up to the final 'as built' status in accordance with final designs of the project and regulatory approvals and planning permissions.



